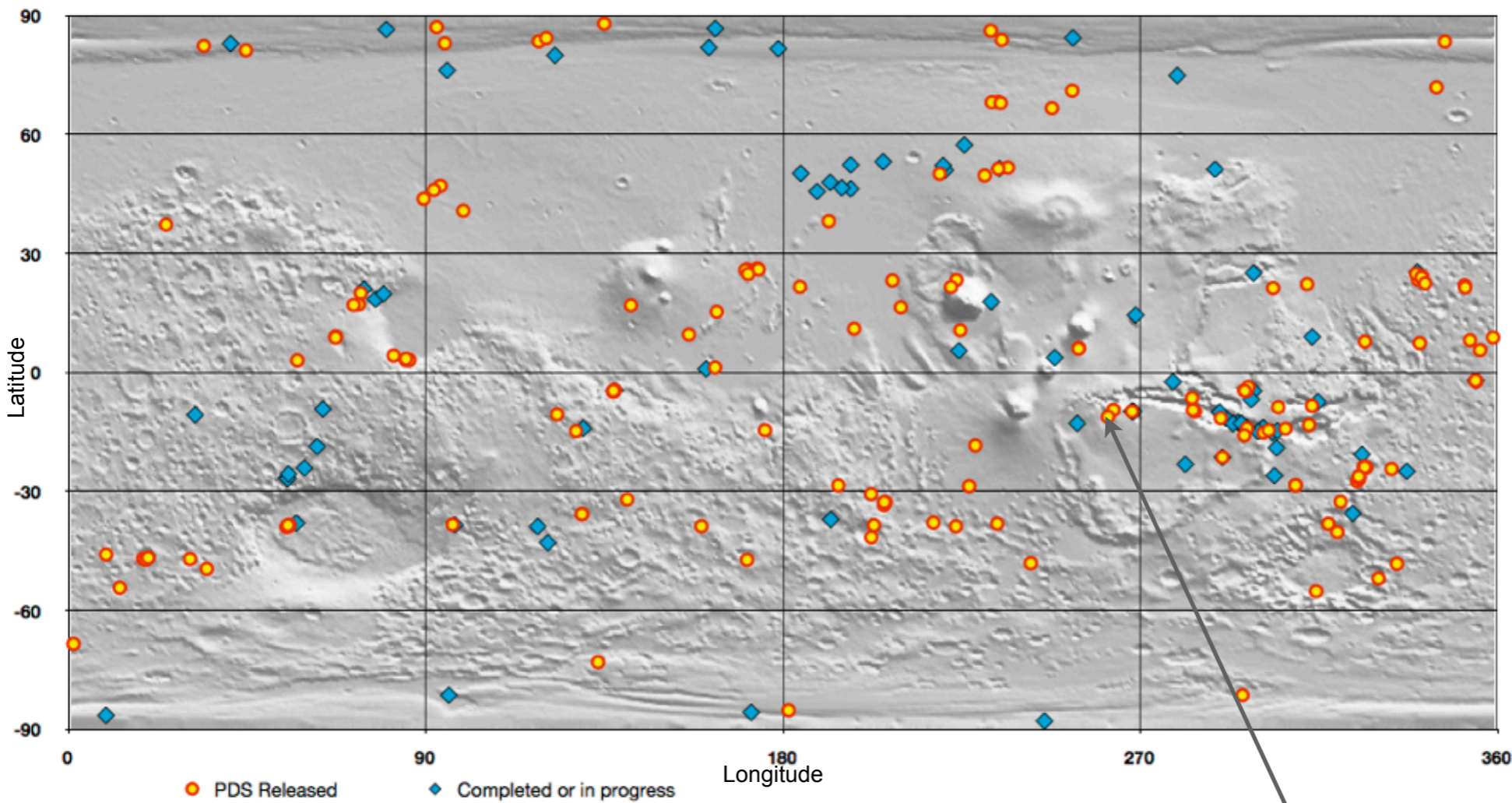


Digital Terrain Models with HiRISE Stereo Pairs

3,704 Stereo pairs acquired 259 DTMs completed 173 DTMs publicly released
<http://www.uahirise.org/dtm/>



PDS Released DTMs as of March 3, 2014



HiRISE DTMs are invaluable for planetary scientists doing geologic analyses of martian landscapes.

At 1 m per pixel (elevation post spacing) and better than 1 m vertical precision, features about the size of a car can be measured.

Mission teams use them to plan safe landing sites and rover traverses.

This map shows all the DTMs that have been made and released to the public (yellow dots) at <http://www.uahirise.org/dtm/>