



## HIGH RESOLUTION IMAGING SCIENCE EXPERIMENT



### Digital Terrain Models Released to the PDS

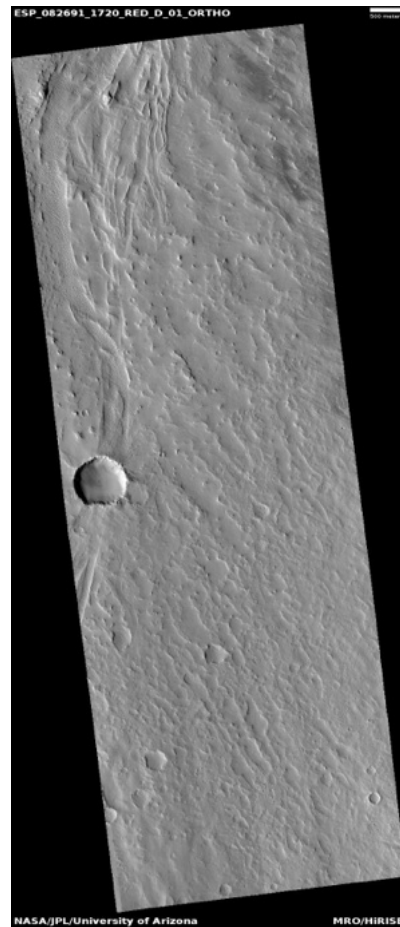
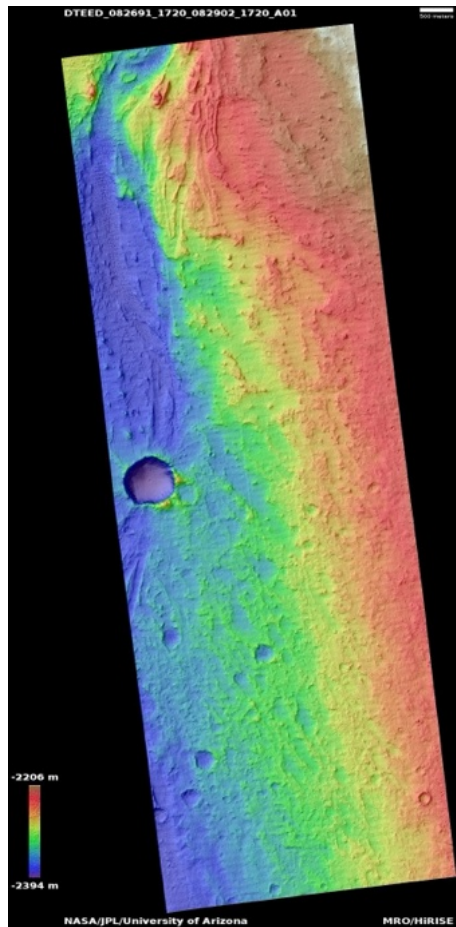
*October, 2025*

Edited by Dora Elalaoui-Pinedo | UA

Matrona Vallis channels	1
Candidate M2020 Perseverance entry vehicle ballast impacts zone	2
Miyamoto Crater	3
Sand monitoring in Pasteur Crater	4
Gorgonum Chaos	5
Cones and crater in Isidis Planitia	6
Crater near Uranus Mons	7
Mounds in northern Chryse region and possible MSL rover landing site	8
Hills in Phlegra Montes	9
Gully monitoring in Noachis Terra	10
Western rim of well-preserved crater on northern plains	11
Tightly-meandering ridge in Aeolis Planum	12

# Matrona Vallis channels

DTEED\_082691\_1720\_082902\_1720\_A01



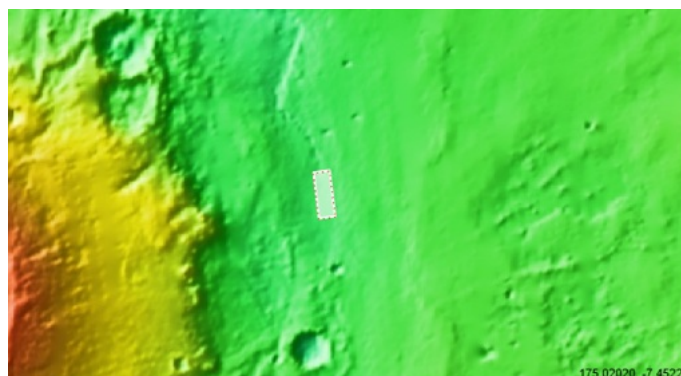
**Latitude:** -8.105  
**Longitude:** 176.41

**DTM Producer:** UA | DORA ELALAOUI-PINEDO  
**For more details about this DTM, visit:**

[https://www.uahirise.org/dtm/ESP\\_082691\\_1720](https://www.uahirise.org/dtm/ESP_082691_1720)

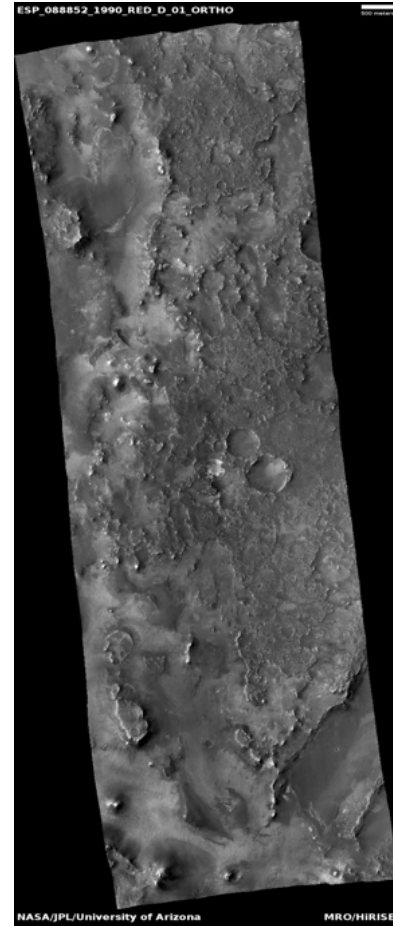
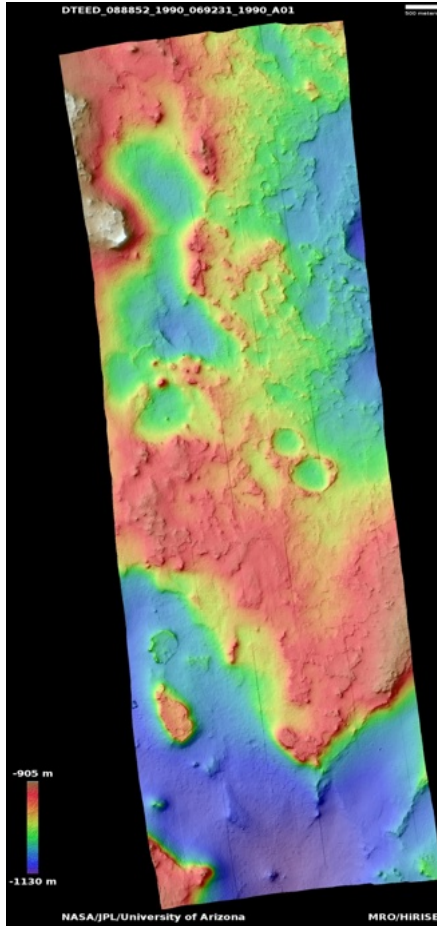
**Stereo Pair:**

ESP\_082691\_1720  
ESP\_082902\_1720



# Candidate M2020 Perseverance entry vehicle ballast impacts zone

DTEED\_088852\_1990\_069231\_1990\_A01



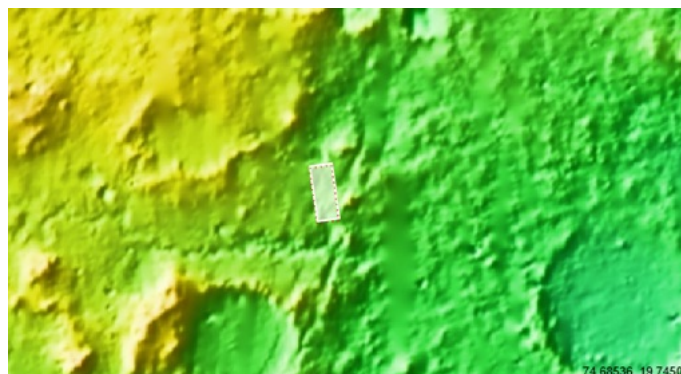
**Latitude:** 18.915  
**Longitude:** 76.206

**DTM Producer:** UA | BELLAMY BLAYNE FAUNCE  
**For more details about this DTM, visit:**

[https://www.uahirise.org/dtm/ESP\\_088852\\_1990](https://www.uahirise.org/dtm/ESP_088852_1990)

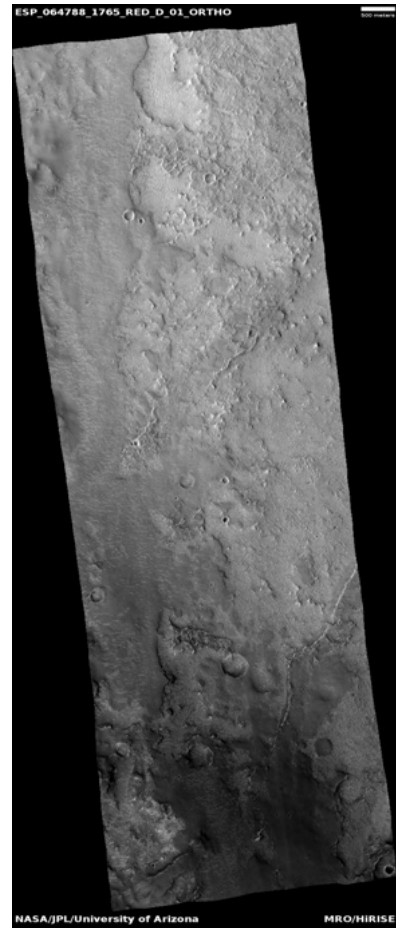
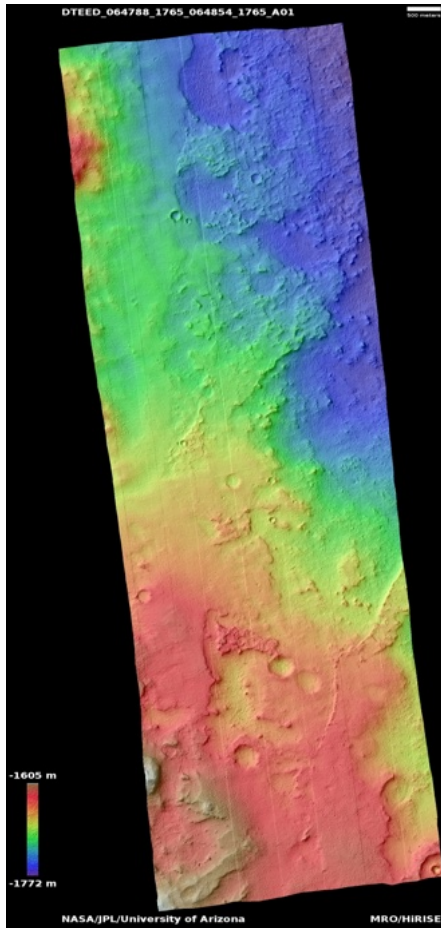
**Stereo Pair:**

ESP\_088852\_1990  
ESP\_069231\_1990



# Miyamoto Crater

DTEED\_064788\_1765\_064854\_1765\_A01



**Latitude:** -3.29983

**Longitude:** 352.00

**DTM Producer:** UA | BELLAMY BLAYNE FAUNCE

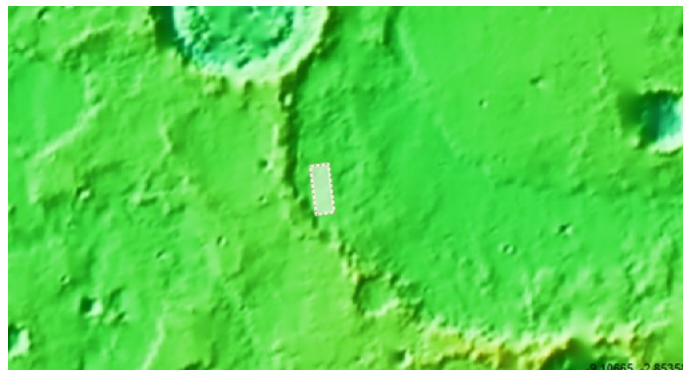
**For more details about this DTM, visit:**

[https://www.uahirise.org/dtm/ESP\\_064788\\_1765](https://www.uahirise.org/dtm/ESP_064788_1765)

**Stereo Pair:**

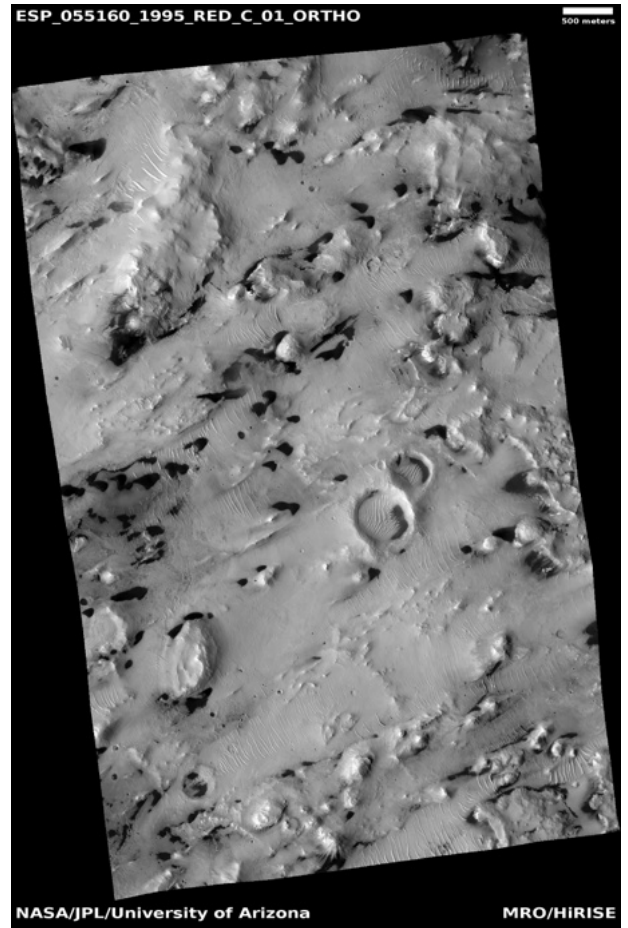
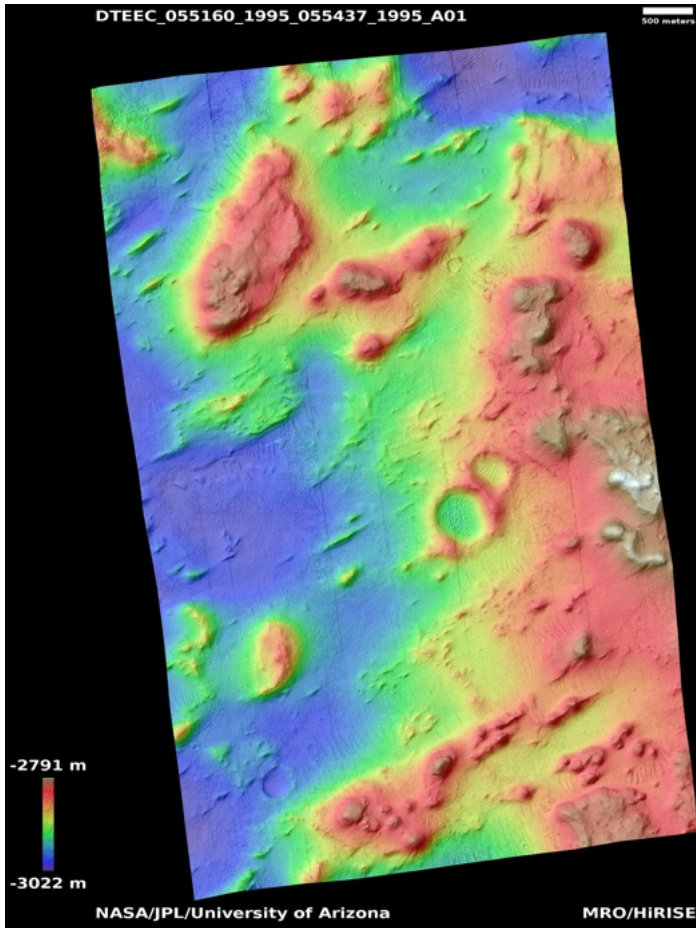
ESP\_064854\_1765

ESP\_064788\_1765



# Sand monitoring in Pasteur Crater

DTEEC\_055160\_1995\_055437\_1995\_A01



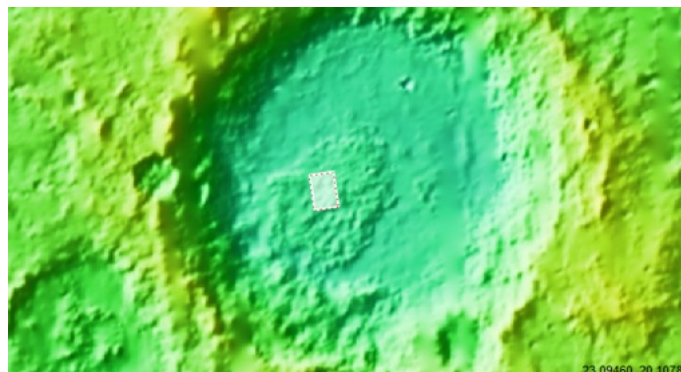
Latitude: 19.242  
Longitude: 24.402

DTM Producer: UA | RAY OLGUIN  
For more details about this DTM, visit:

[https://www.uahirise.org/dtm/ESP\\_055160\\_1995](https://www.uahirise.org/dtm/ESP_055160_1995)

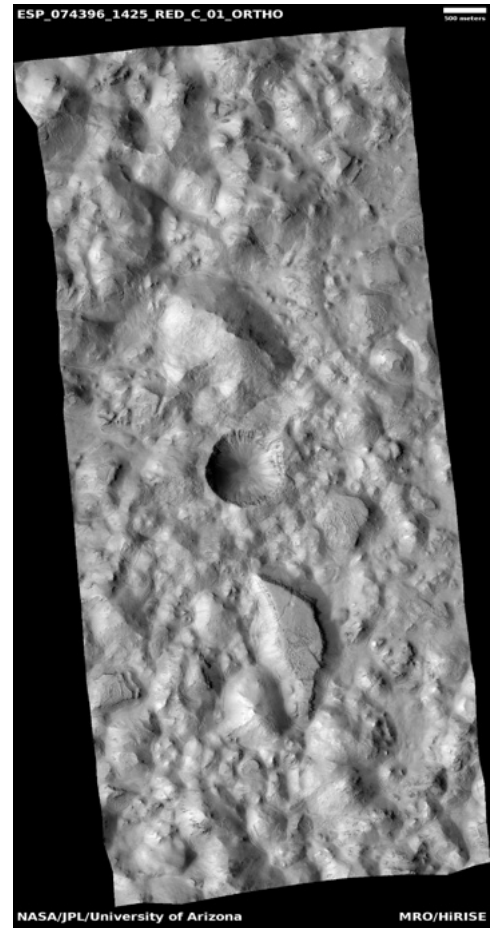
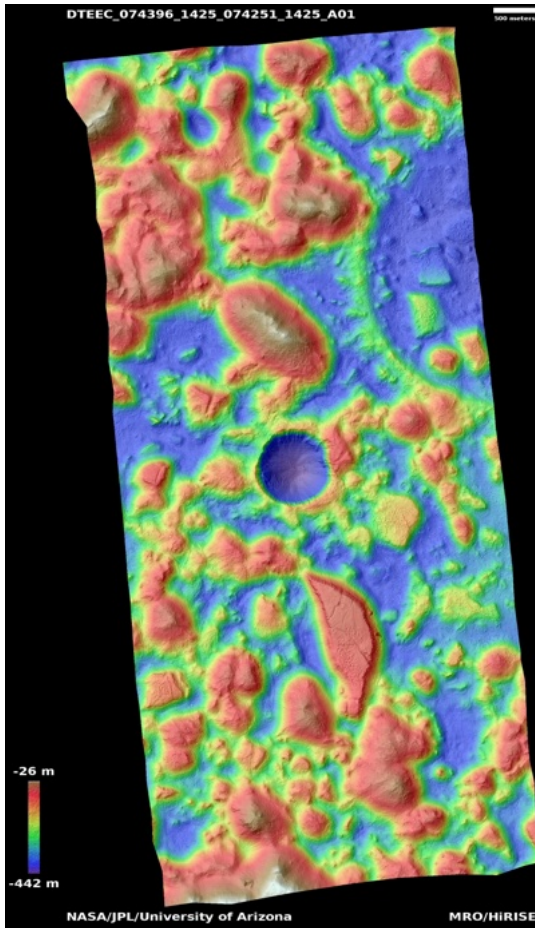
Stereo Pair:

ESP\_055160\_1995  
ESP\_055437\_1995



# Gorgonum Chaos

DTEEC\_074396\_1425\_074251\_1425\_A01



**Latitude:** -36.99  
**Longitude:** 188.122

**DTM Producer:** UA | RAY OLGUIN

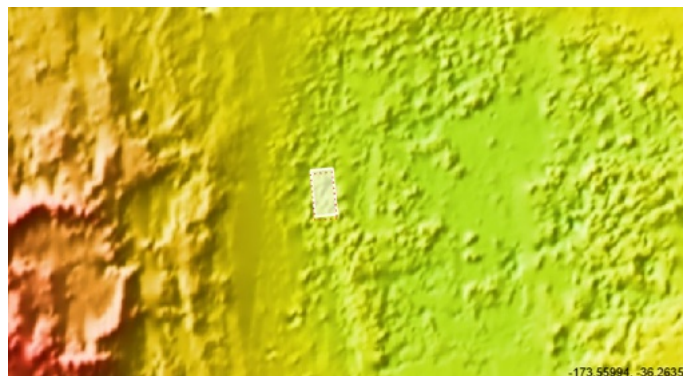
**For more details about this DTM, visit:**

[https://www.uahirise.org/dtm/ESP\\_074396\\_1425](https://www.uahirise.org/dtm/ESP_074396_1425)

**Stereo Pair:**

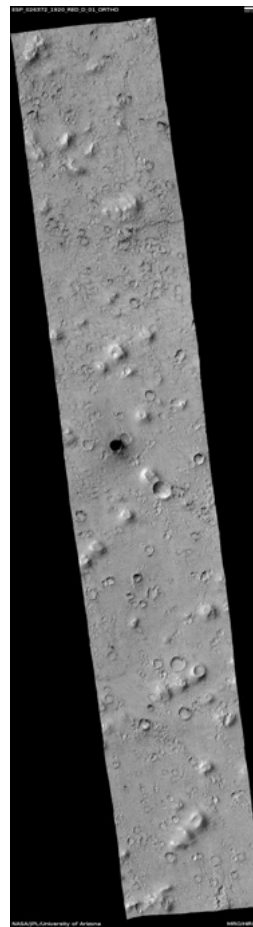
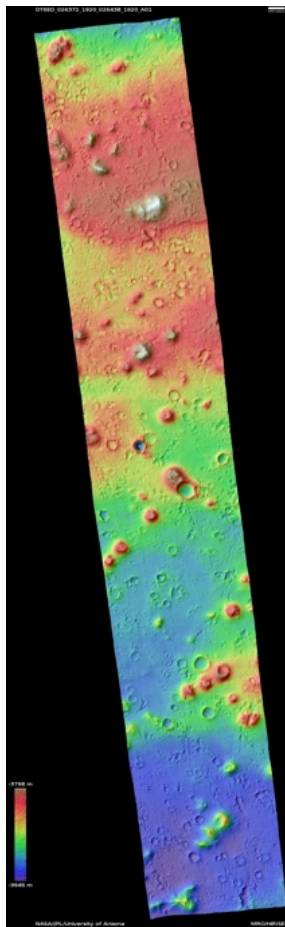
ESP\_074251\_1425

ESP\_074396\_1425



# Cones and crater in Isidis Planitia

DTEED\_026372\_1920\_026438\_1920\_A01



**Latitude:** 11.645  
**Longitude:** 83.705

**DTM Producer:** UA | BELLAMY BLAYNE FAUNCE  
**For more details about this DTM, visit:**

[https://www.uahirise.org/dtm/ESP\\_026372\\_1920](https://www.uahirise.org/dtm/ESP_026372_1920)

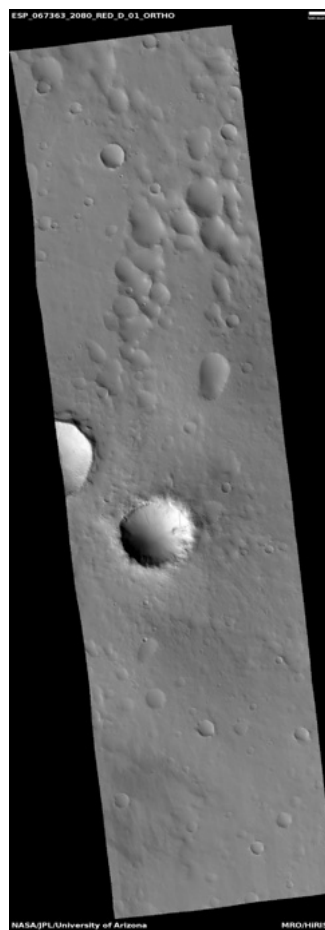
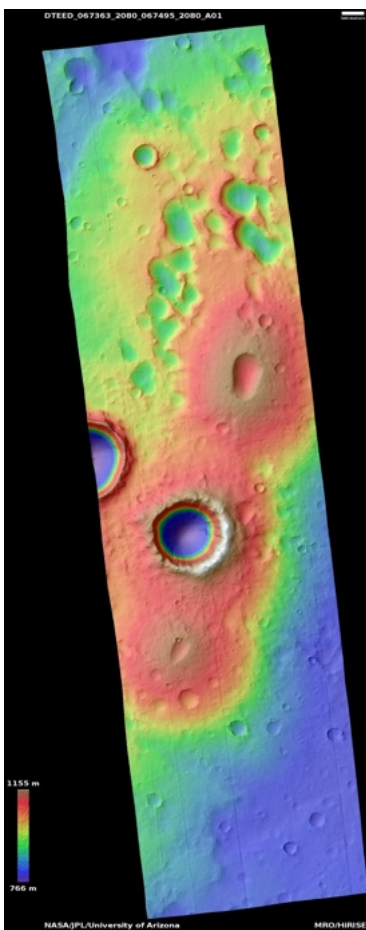
**Stereo Pair:**

ESP\_026372\_1920  
ESP\_026438\_1920



# Crater near Uranius Mons

DTEED\_067363\_2080\_067495\_2080\_A01



**Latitude:** 27.806

**Longitude:** 271.01

**DTM Producer:** UA | RAY OLGUIN

**For more details about this DTM, visit:**

[https://www.uahirise.org/dtm/ESP\\_067363\\_2080](https://www.uahirise.org/dtm/ESP_067363_2080)

**Stereo Pair:**

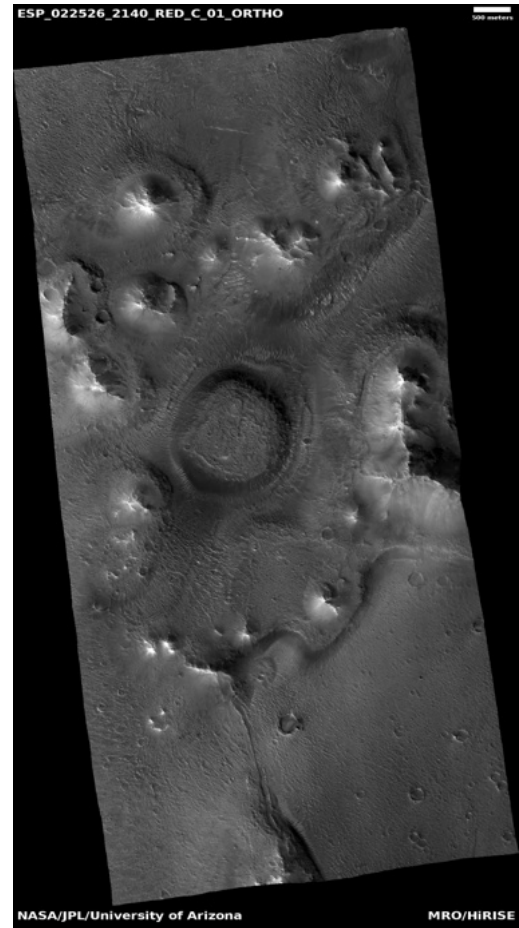
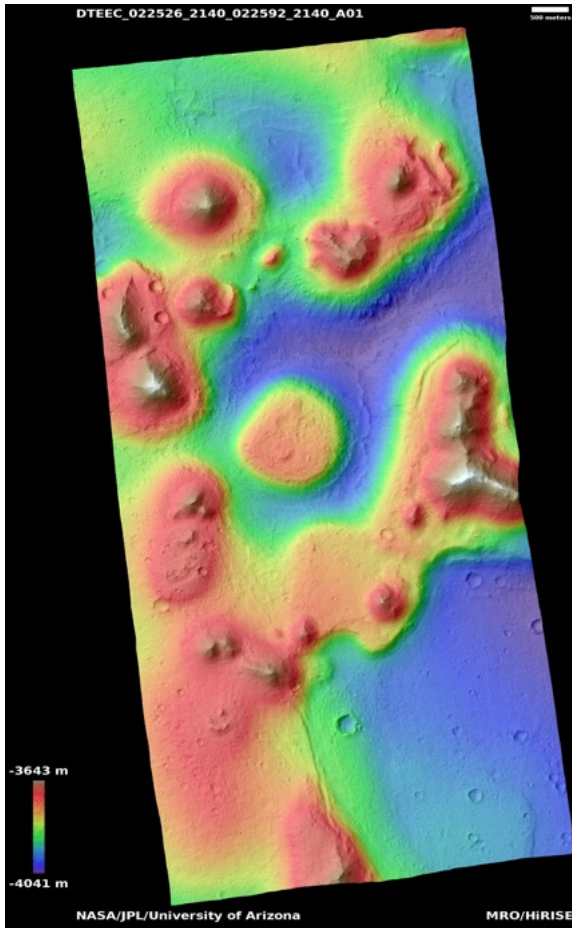
ESP\_067495\_2080

ESP\_067363\_2080



# Mounds in northern Chryse region and possible MSL rover landing site

DTEEC\_022526\_2140\_022592\_2140\_A01



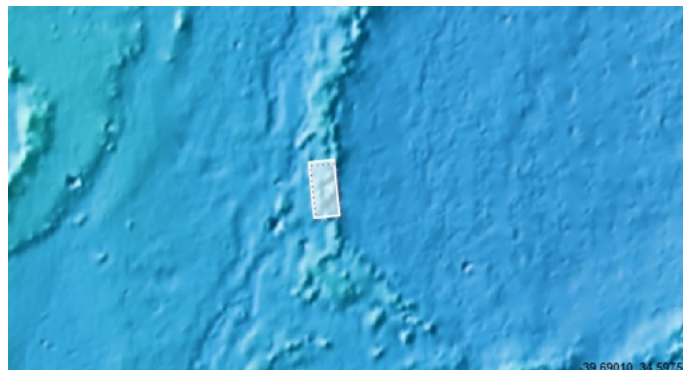
**Latitude:** 33.860  
**Longitude:** 321.87

**DTM Producer:** UA | BELLAMY BLAYNE FAUNCE  
**For more details about this DTM, visit:**

[https://www.uahirise.org/dtm/ESP\\_022526\\_2140](https://www.uahirise.org/dtm/ESP_022526_2140)

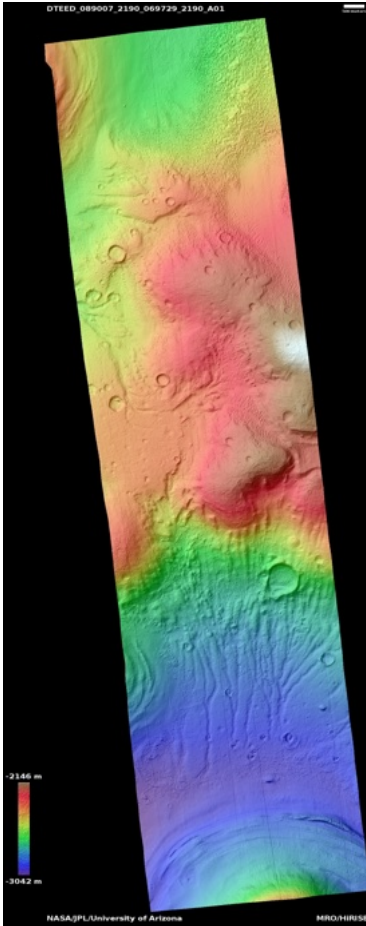
**Stereo Pair:**

ESP\_022592\_2140  
ESP\_022526\_2140



# Hills in Phlegra Montes

DTEED\_089007\_2190\_069729\_2190\_A01



**Latitude:** 38.52  
**Longitude:** 162.94

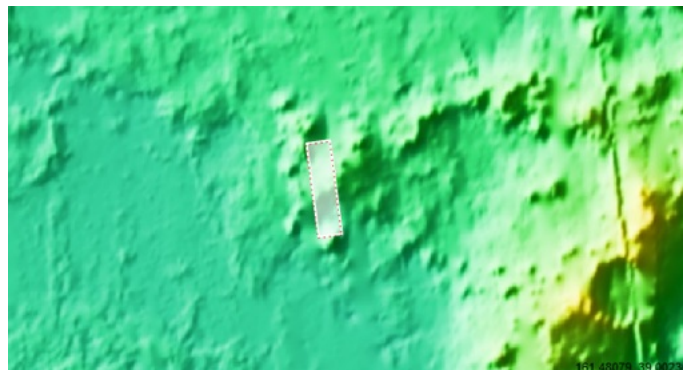
**DTM Producer:** UA | RAY OLGUIN  
**For more details about this DTM, visit:**

[https://www.uahirise.org/dtm/ESP\\_089007\\_2190](https://www.uahirise.org/dtm/ESP_089007_2190)

**Stereo Pair:**

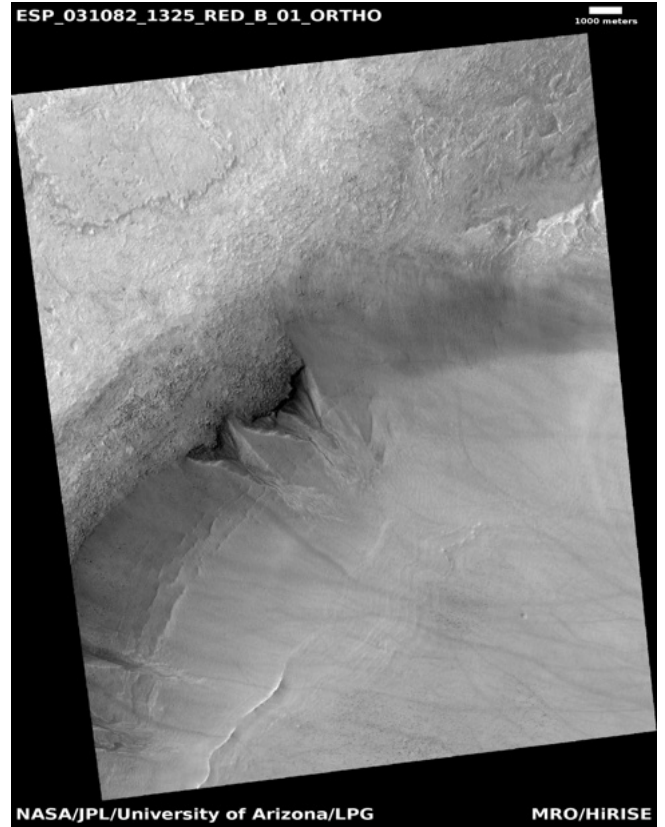
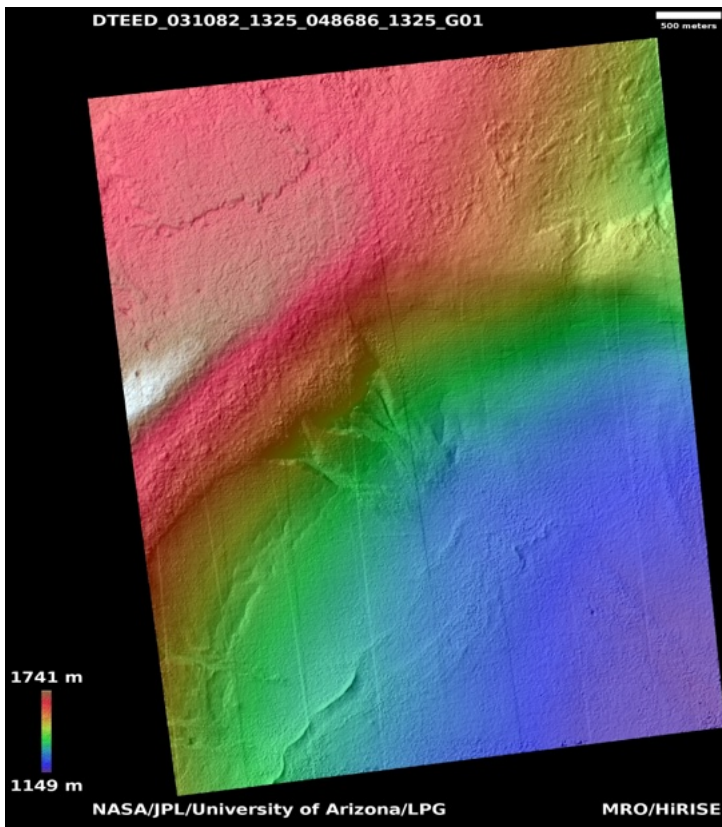
ESP\_089007\_2190

ESP\_069729\_2190



# Gully monitoring in Noachis Terra

DTEED\_031082\_1325\_048686\_1325\_G01



**Latitude:** -46.9795

**Longitude:** 26.6978

**Stereo Pair:**

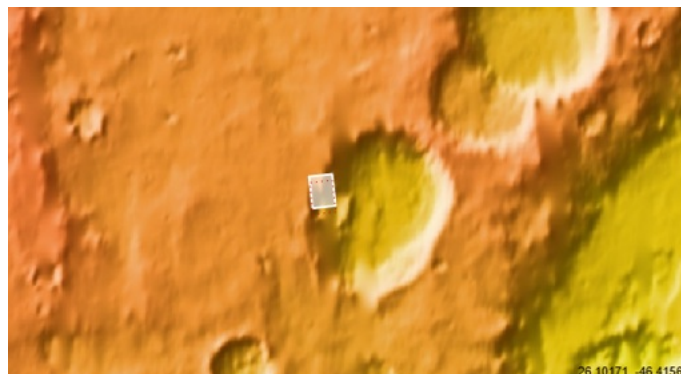
ESP\_031082\_1325

ESP\_048686\_1325

**DTM Producer:** LPG | AXEL NOBLET

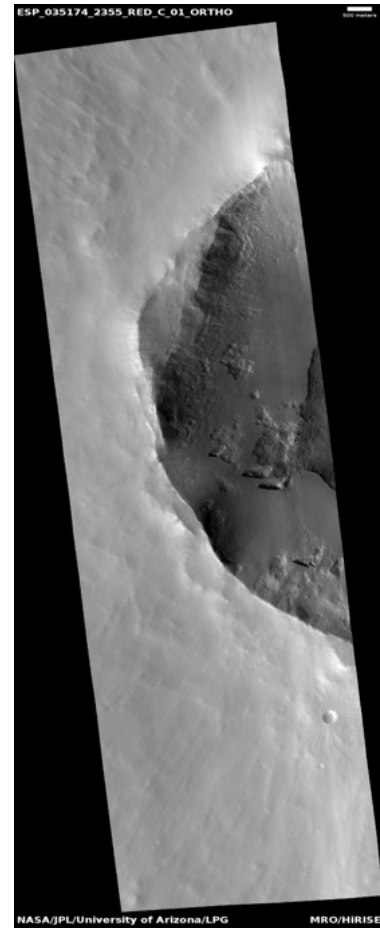
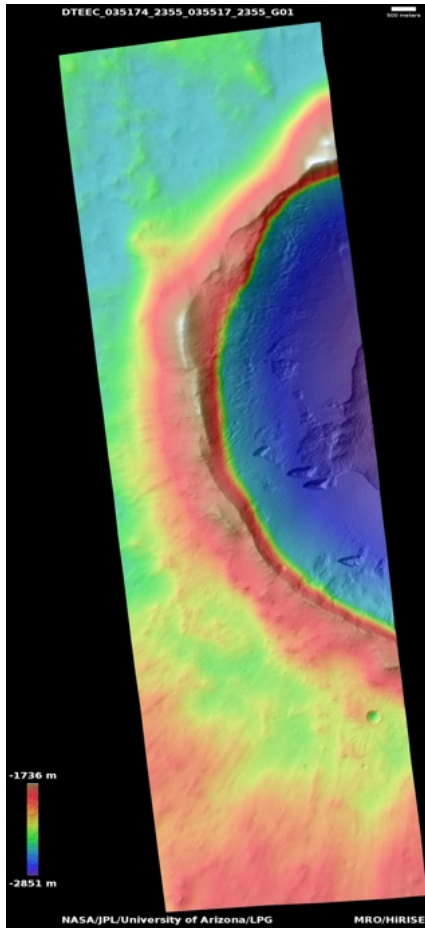
**For more details about this DTM, visit:**

[https://www.uahirise.org/dtm/ESP\\_031082\\_1325](https://www.uahirise.org/dtm/ESP_031082_1325)



# Western rim of well-preserved crater on northern plains

DTEEC\_035174\_2355\_035517\_2355\_G01



**Latitude:** 55.3356  
**Longitude:** 253.416

**DTM Producer:** LPG | NOÉ LE BECQ

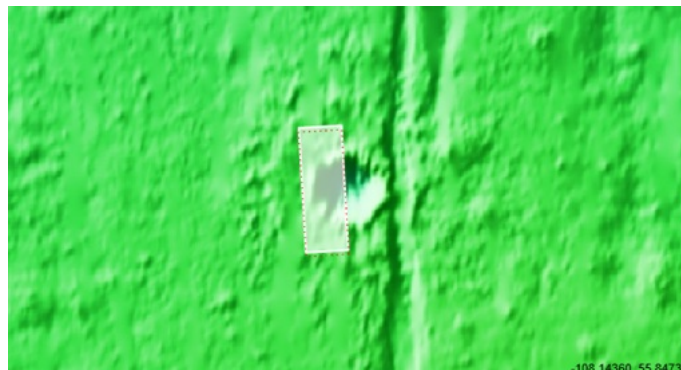
**For more details about this DTM, visit:**

[https://www.uahirise.org/dtm/ESP\\_035174\\_2355](https://www.uahirise.org/dtm/ESP_035174_2355)

**Stereo Pair:**

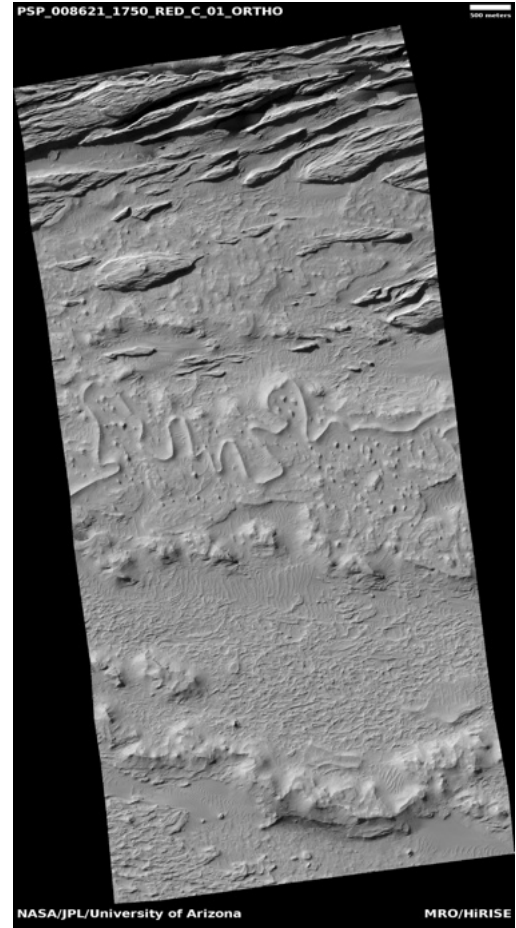
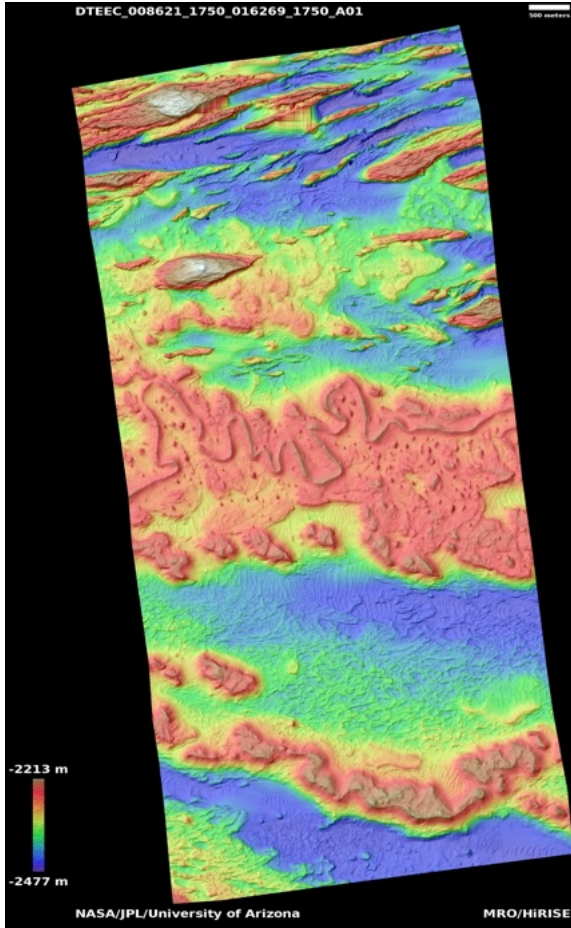
ESP\_035517\_2355

ESP\_035174\_2355



# Tightly-meandering ridge in Aeolis Planum

DTEEC\_008621\_1750\_016269\_1750\_A01



**Latitude:** -4.9260  
**Longitude:** 154.62

**DTM Producer:** UA | RAY OLGUIN

**For more details about this DTM, visit:**

[https://www.uahirise.org/dtm/PSP\\_008621\\_1750](https://www.uahirise.org/dtm/PSP_008621_1750)

**Stereo Pair:**

ESP\_016269\_1750

PSP\_008621\_1750

