



## HIGH RESOLUTION IMAGING SCIENCE EXPERIMENT



### Digital Terrain Models Released to the PDS

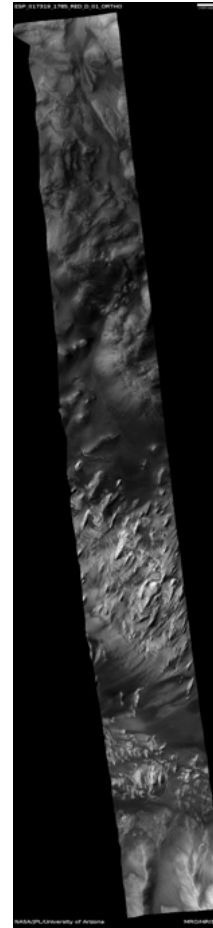
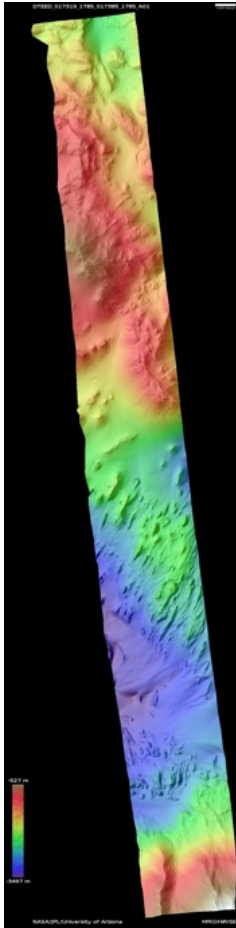
*November, 2025*

Edited by Dora Elalaoui-Pinedo | UA

Possible kieserite deposit on flanks of Hebes Mensa	1
Dune survey	2
Northern plains	3
Valleys in crater northeast of Argyre Planitia	4
Vent and fissure system east of Olympus Mons	5
Landslide possibly caused by impact	6
Icy scarp monitoring	7
Gullies in central peak of Hale Crater	8
Mounds in Oxia Colles	9

# Possible kieserite deposit on flanks of Hebes Mensa

DTEED\_017319\_1785\_017385\_1785\_A01



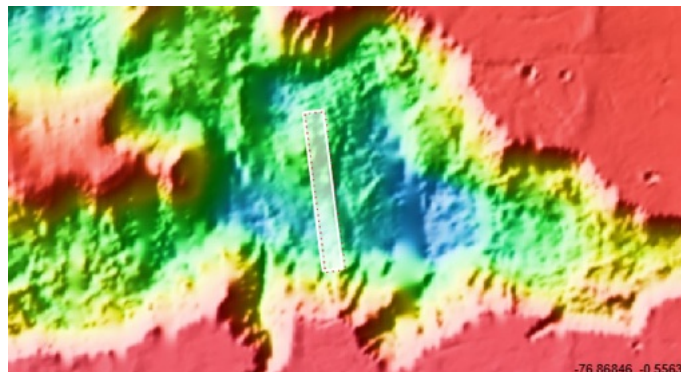
**Latitude:** -1.24882  
**Longitude:** 284.782

**DTM Producer:** UA | RAY OLGUIN  
**For more details about this DTM, visit:**

[https://www.uahirise.org/dtm/ESP\\_017319\\_1785](https://www.uahirise.org/dtm/ESP_017319_1785)

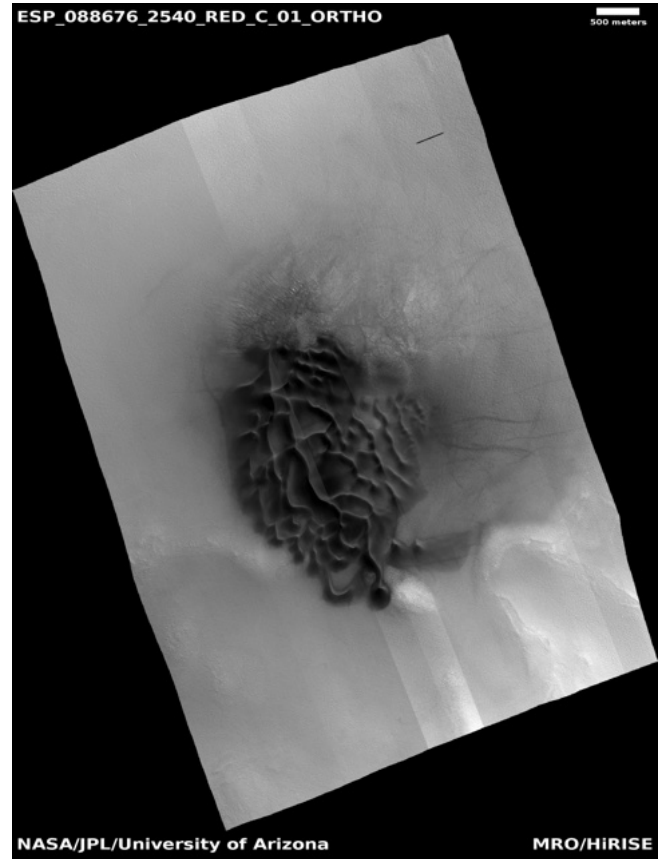
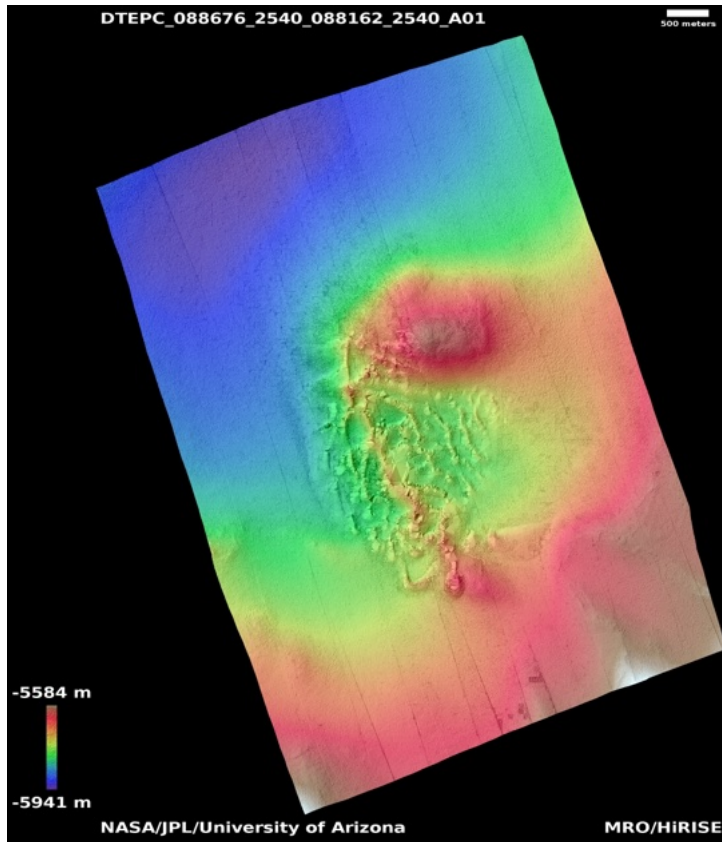
**Stereo Pair:**

ESP\_017319\_1785  
ESP\_017385\_1785



# Dune survey

DTEPC\_088676\_2540\_088162\_2540\_A01



**Latitude:** 73.928

**Longitude:** 186.36

**DTM Producer:** UA | BELLAMY BLAYNE FAUNCE

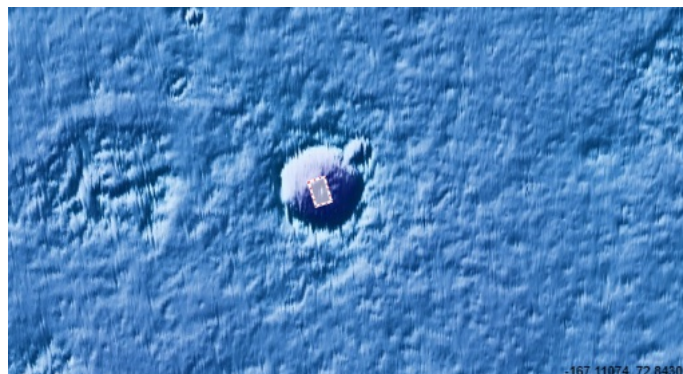
**For more details about this DTM, visit:**

[https://www.uahirise.org/dtm/ESP\\_088676\\_2540](https://www.uahirise.org/dtm/ESP_088676_2540)

**Stereo Pair:**

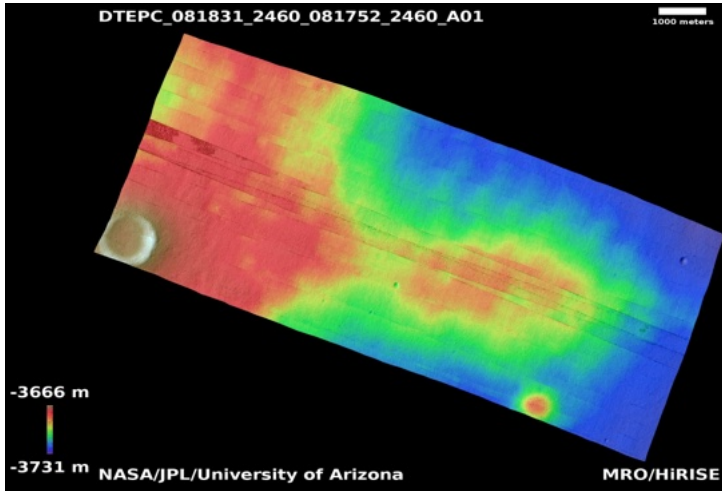
ESP\_088162\_2540

ESP\_088676\_2540



# Northern plains

DTEPC\_081831\_2460\_081752\_2460\_A01



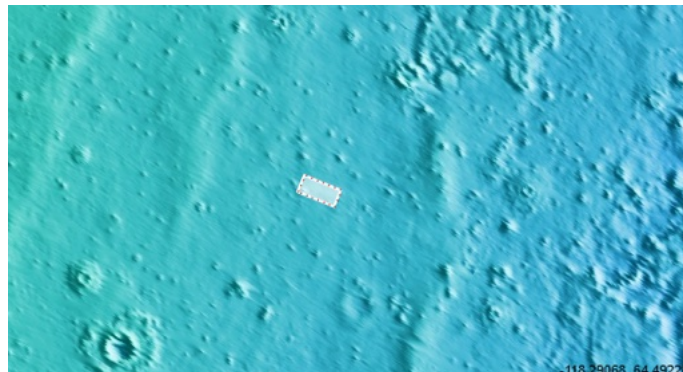
**Latitude:** 65.71  
**Longitude:** 240.75

**DTM Producer:** UA | BELLAMY BLAYNE FAUNCE  
**For more details about this DTM, visit:**

[https://www.uahirise.org/dtm/ESP\\_081831\\_2460](https://www.uahirise.org/dtm/ESP_081831_2460)

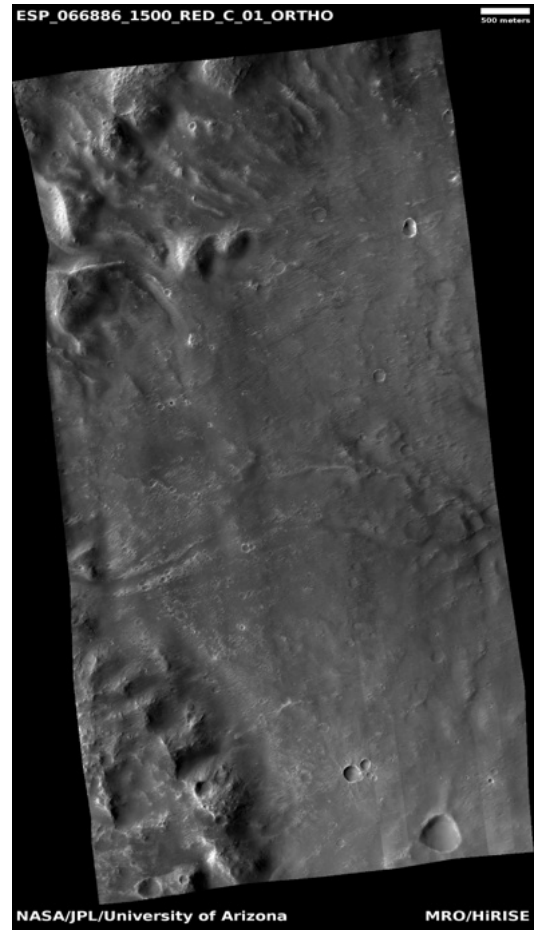
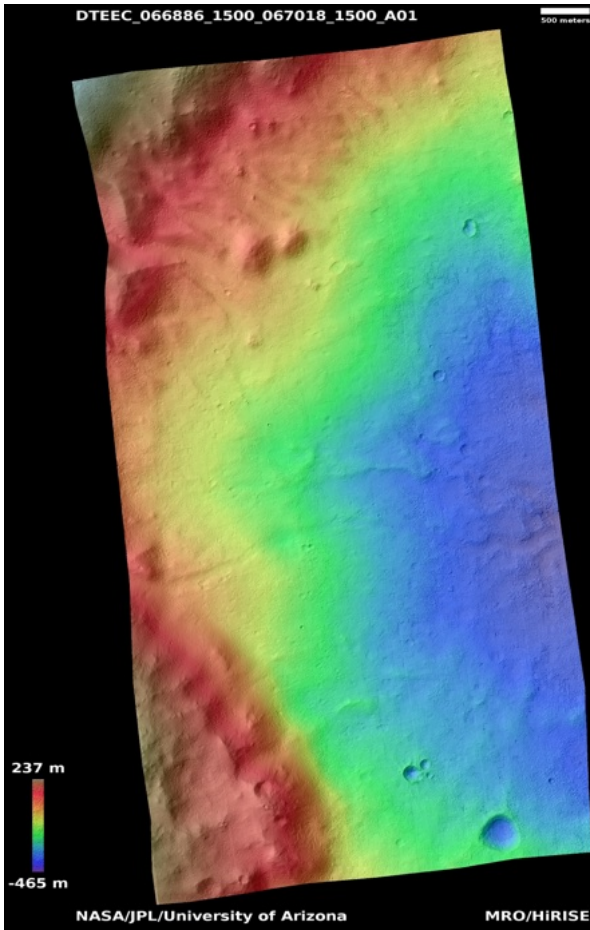
**Stereo Pair:**

ESP\_081752\_2460  
ESP\_081831\_2460



# Valleys in crater northeast of Argyre Planitia

DTEEC\_066886\_1500\_067018\_1500\_A01



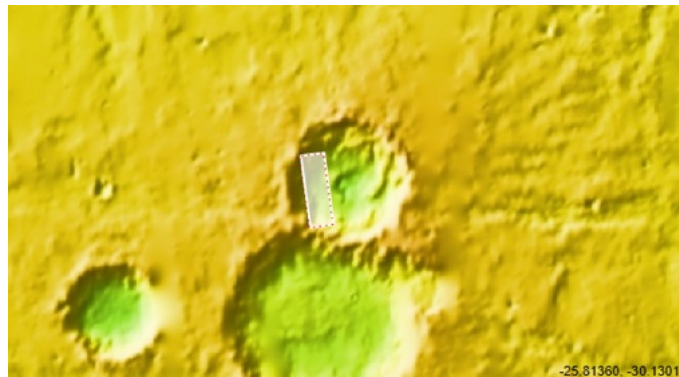
**Latitude:** -29.73  
**Longitude:** 334.816

**DTM Producer:** UA | RAY OLGUIN  
**For more details about this DTM, visit:**

**Stereo Pair:**

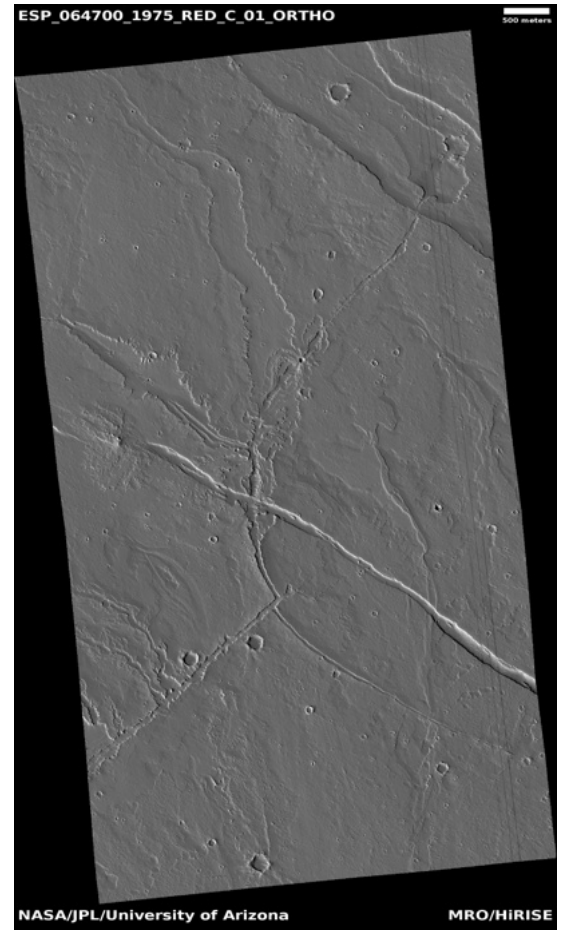
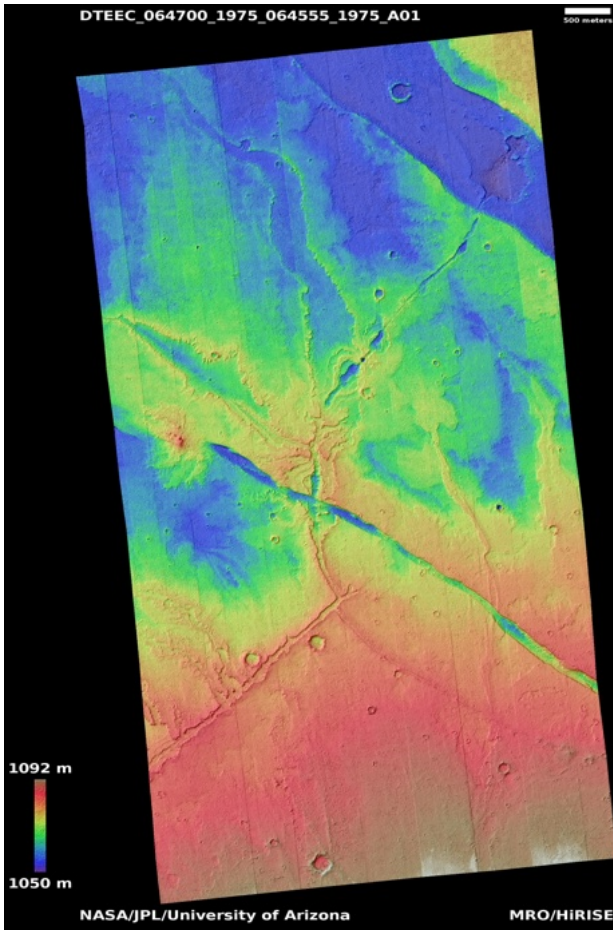
[https://www.uahirise.org/dtm/ESP\\_066886\\_1500](https://www.uahirise.org/dtm/ESP_066886_1500)

ESP\_067018\_1500  
ESP\_066886\_1500



# Vent and fissure system east of Olympus Mons

DTEEC\_064700\_1975\_064555\_1975\_A01



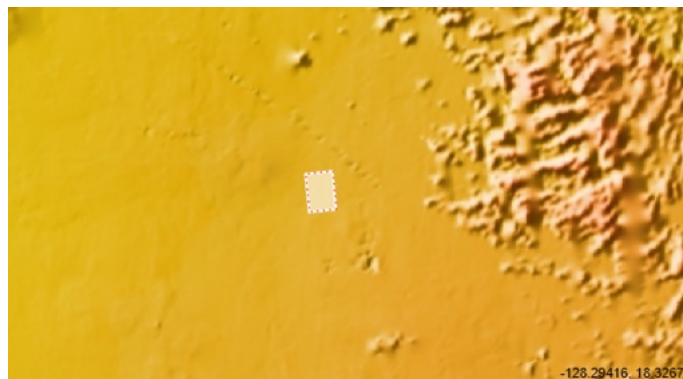
**Latitude:** 17.547  
**Longitude:** 233.09

**DTM Producer:** UA | RAY OLGUIN  
**For more details about this DTM, visit:**

**Stereo Pair:**

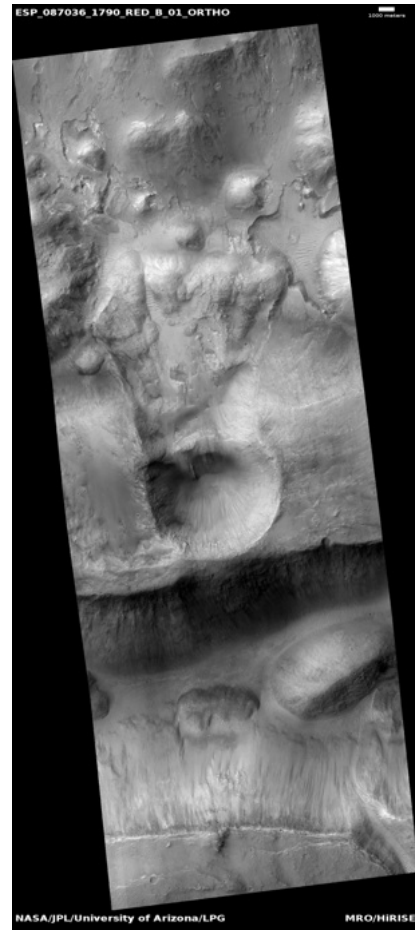
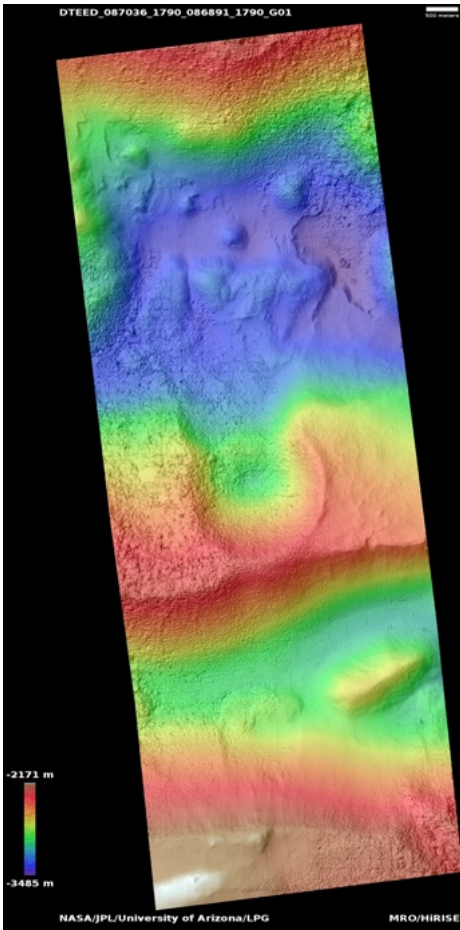
[https://www.uahirise.org/dtm/ESP\\_064700\\_1975](https://www.uahirise.org/dtm/ESP_064700_1975)

ESP\_064555\_1975  
ESP\_064700\_1975



# Landslide possibly caused by impact

DTEED\_087036\_1790\_086891\_1790\_G01



**Latitude:** -1.13287  
**Longitude:** 342.473

**DTM Producer:** LPG | AXEL NOBLET

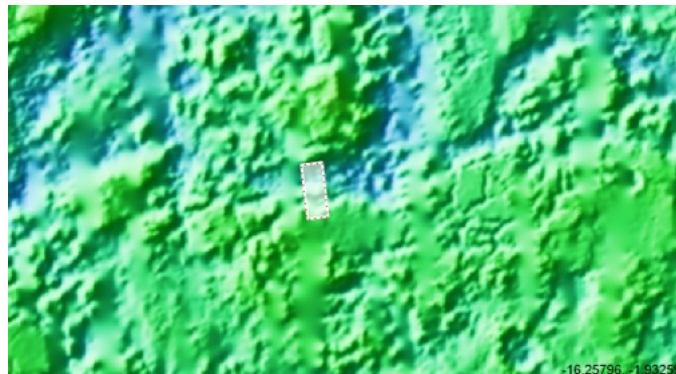
**For more details about this DTM, visit:**

[https://www.uahirise.org/dtm/ESP\\_087036\\_1790](https://www.uahirise.org/dtm/ESP_087036_1790)

**Stereo Pair:**

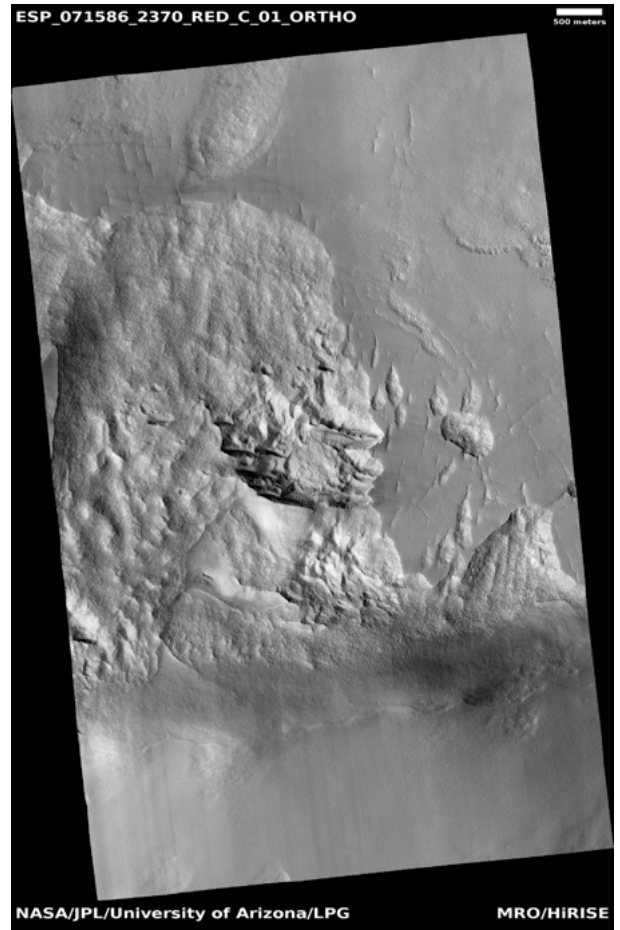
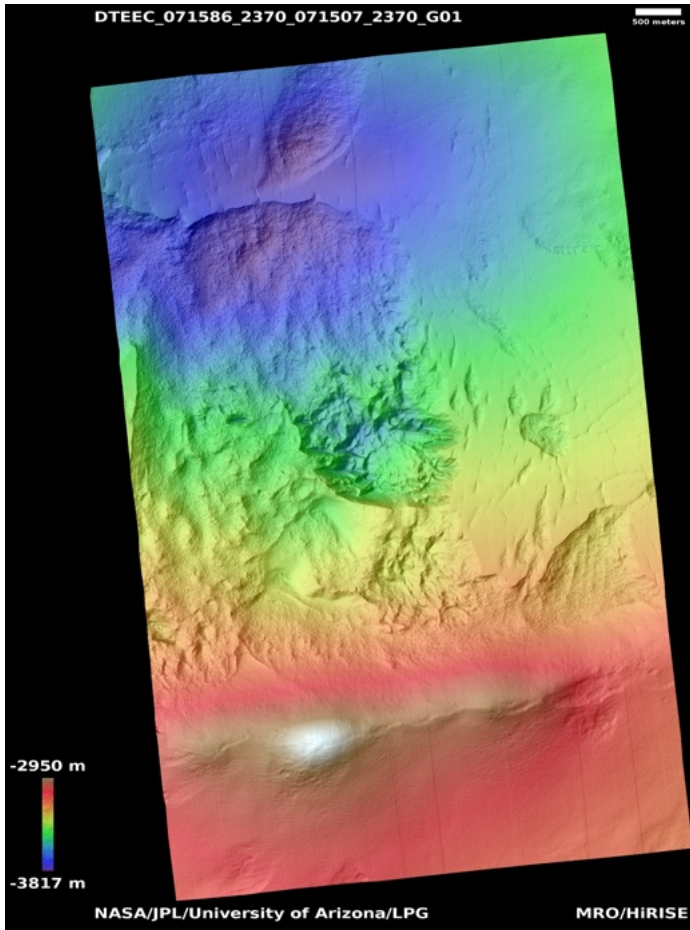
ESP\_086891\_1790

ESP\_087036\_1790



# Icy scarp monitoring

DTEEC\_071586\_2370\_071507\_2370\_G01



**Latitude:** 56.9234  
**Longitude:** 216.886

**DTM Producer:** LPG | NOÉ LE BECQ

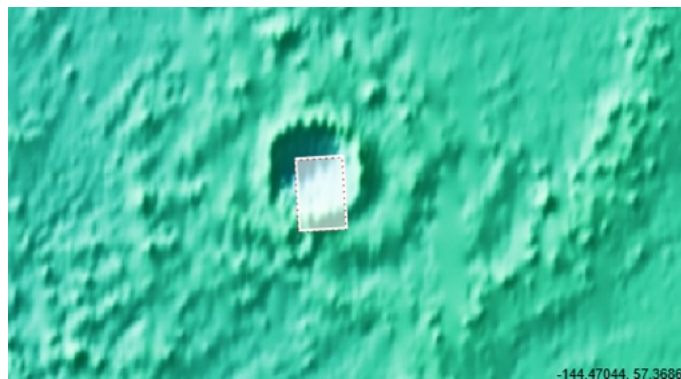
**For more details about this DTM, visit:**

[https://www.uahirise.org/dtm/ESP\\_071586\\_2370](https://www.uahirise.org/dtm/ESP_071586_2370)

**Stereo Pair:**

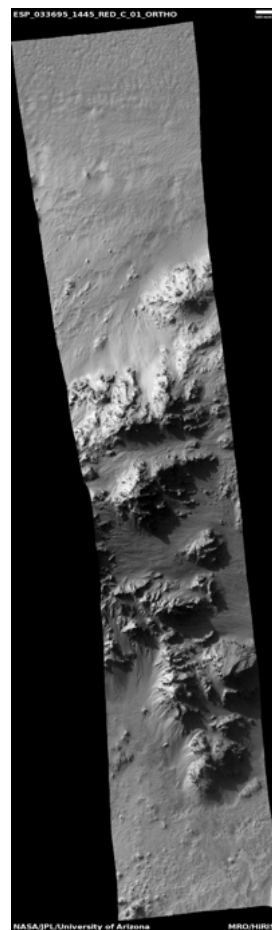
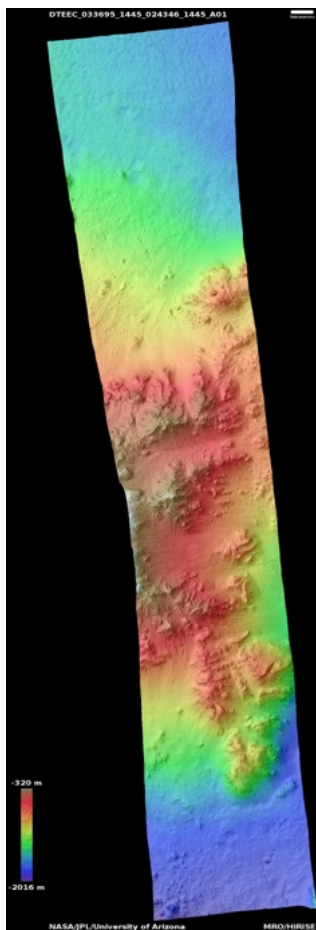
ESP\_071507\_2370

ESP\_071586\_2370



# Gullies in central peak of Hale Crater

DTEEC\_033695\_1445\_024346\_1445\_A01



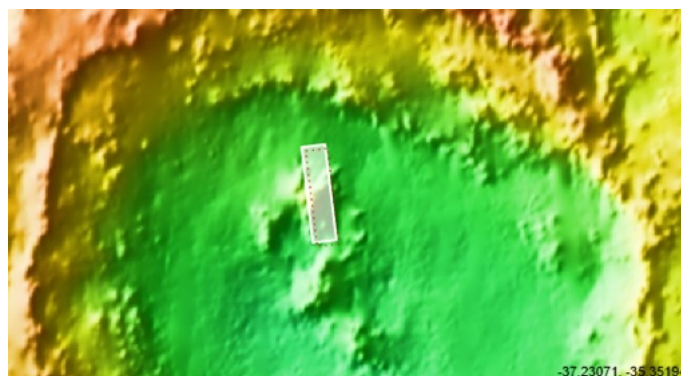
**Latitude:** -35.329  
**Longitude:** 323.504

**DTM Producer:** UA | BELLAMY BLAYNE FAUNCE  
**For more details about this DTM, visit:**

[https://www.uahirise.org/dtm/ESP\\_033695\\_1445](https://www.uahirise.org/dtm/ESP_033695_1445)

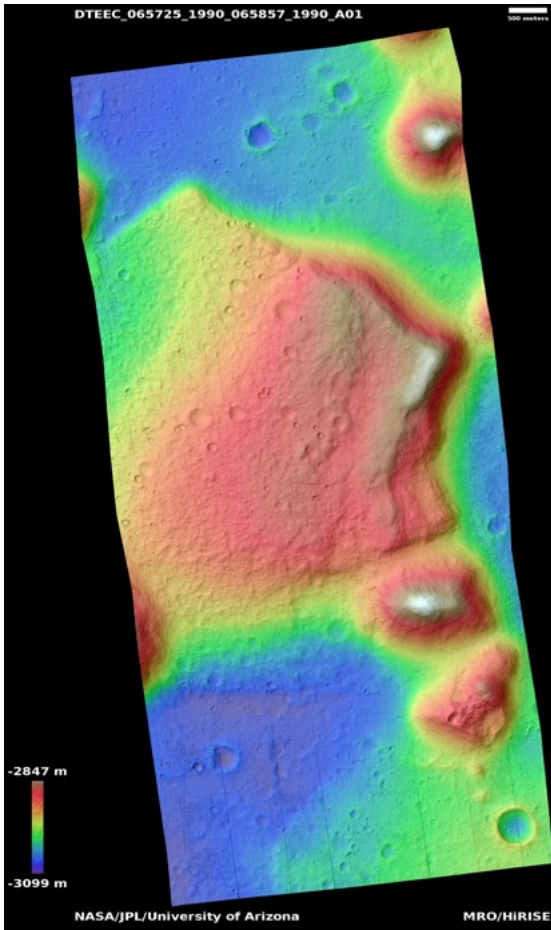
**Stereo Pair:**

ESP\_024346\_1445  
ESP\_033695\_1445



# Mounds in Oxia Colles

DTEEC\_065725\_1990\_065857\_1990\_A01



Latitude: 18.87  
Longitude: 331.78

DTM Producer: UA | RAY OLGUIN  
For more details about this DTM, visit:

[https://www.uahirise.org/dtm/ESP\\_065725\\_1990](https://www.uahirise.org/dtm/ESP_065725_1990)

Stereo Pair:

ESP\_065725\_1990  
ESP\_065857\_1990

