



## HIGH RESOLUTION IMAGING SCIENCE EXPERIMENT



### Digital Terrain Models Released to the PDS

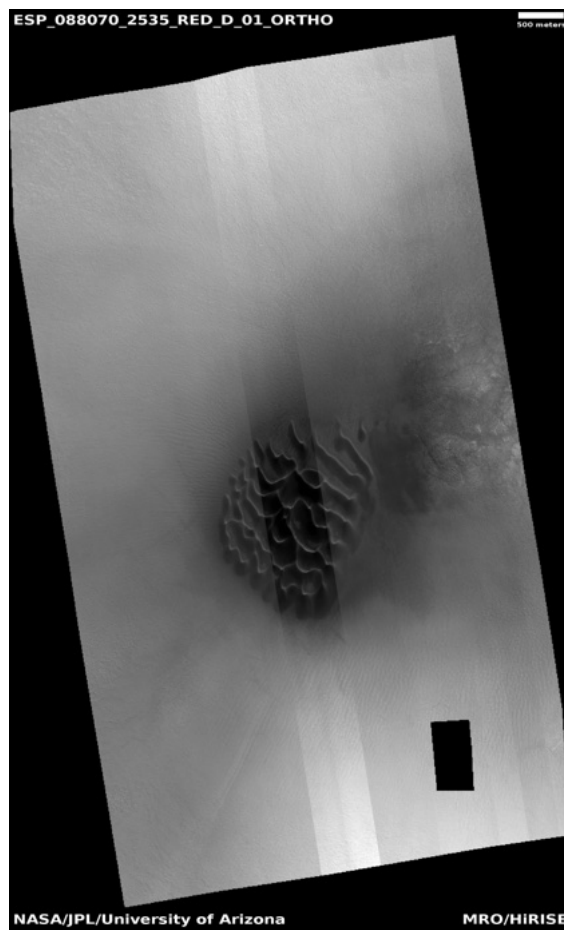
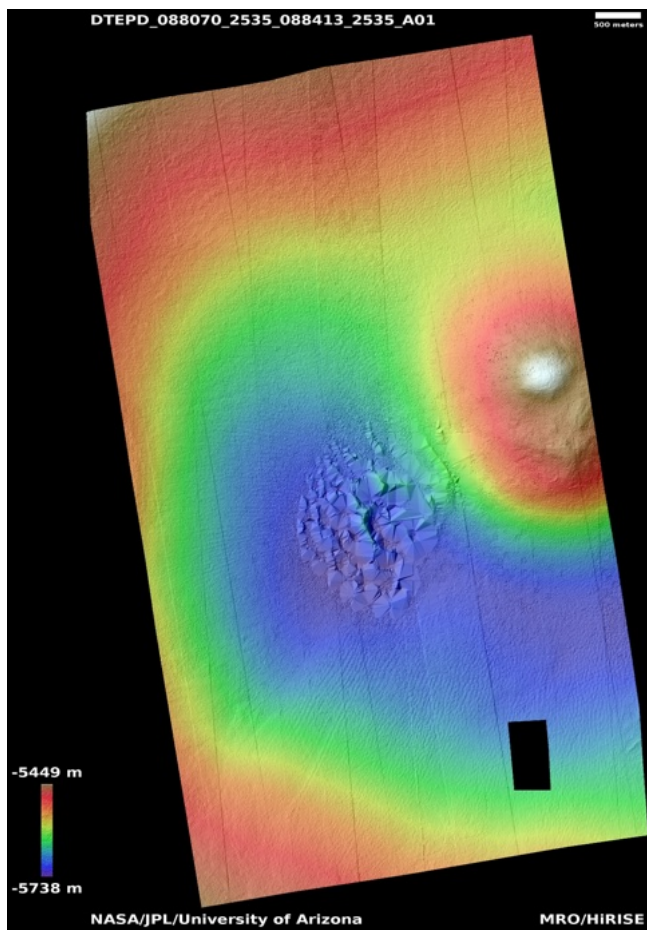
*February, 2026*

Edited by Dora Elalaoui-Pinedo | UA

Dune field	1
Gullies eroding thick mantling deposits	2
Uphill facing scarps and lobate deformation on slope	3
Light-toned units on hummocks of chaotic terrain	4
Central peak of crater	5
Channels in Arabia Terra	6
Crater wall with potential chloride deposit outcrop	7
Gullies on north wall of Nier Crater	8
Features around crater in Arabia Terra	9
Candidate landing site for SpaceX Starship near Arcadia Planitia	10
Cross-cutting layers in Galle Crater	11

# Dune field

DTEPD\_088070\_2535\_088413\_2535\_A01



**Latitude:** 73.4137

**Longitude:** 178.345

**DTM Producer:** UA | DORA ELALAOUI-PINEDO

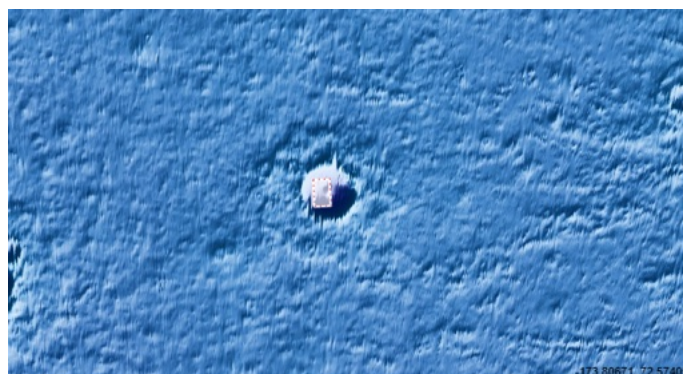
**For more details about this DTM, visit:**

[https://www.uahirise.org/dtm/ESP\\_088070\\_2535](https://www.uahirise.org/dtm/ESP_088070_2535)

**Stereo Pair:**

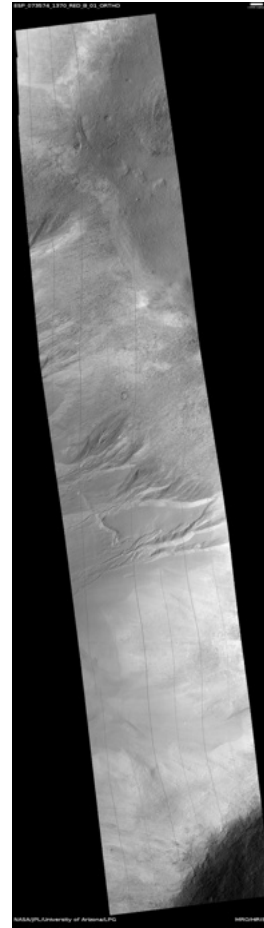
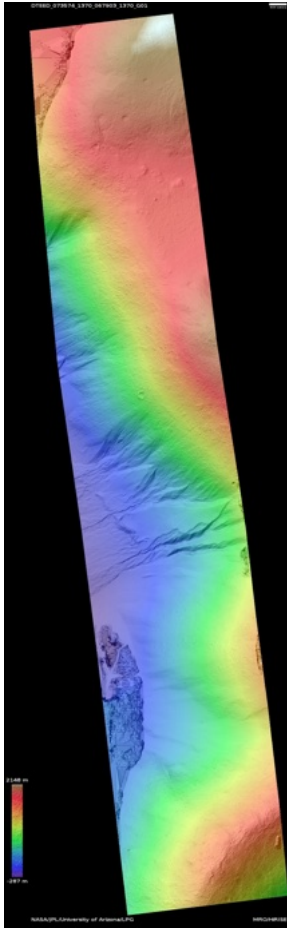
ESP\_088413\_2535

ESP\_088070\_2535



# Gullies eroding thick mantling deposits

DTEED\_073574\_1370\_067903\_1370\_G01



**Latitude:** -42.6827  
**Longitude:** 308.911

**DTM Producer:** LPG | AXEL NOBLET

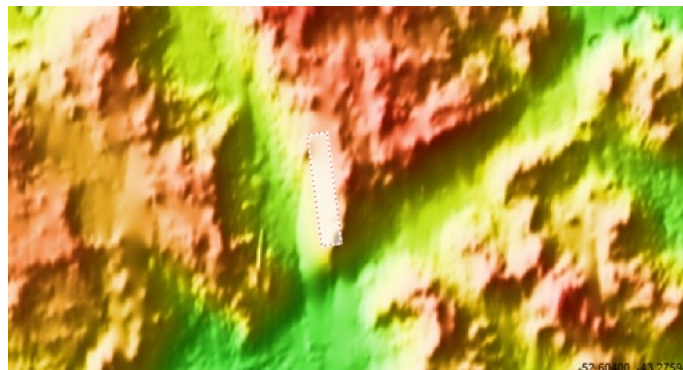
**For more details about this DTM, visit:**

[https://www.uahirise.org/dtm/ESP\\_073574\\_1370](https://www.uahirise.org/dtm/ESP_073574_1370)

**Stereo Pair:**

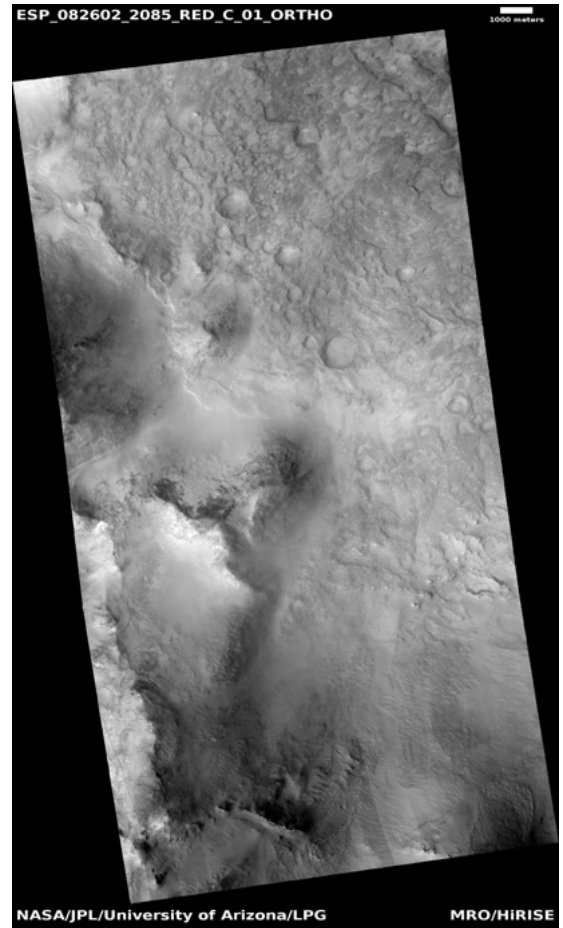
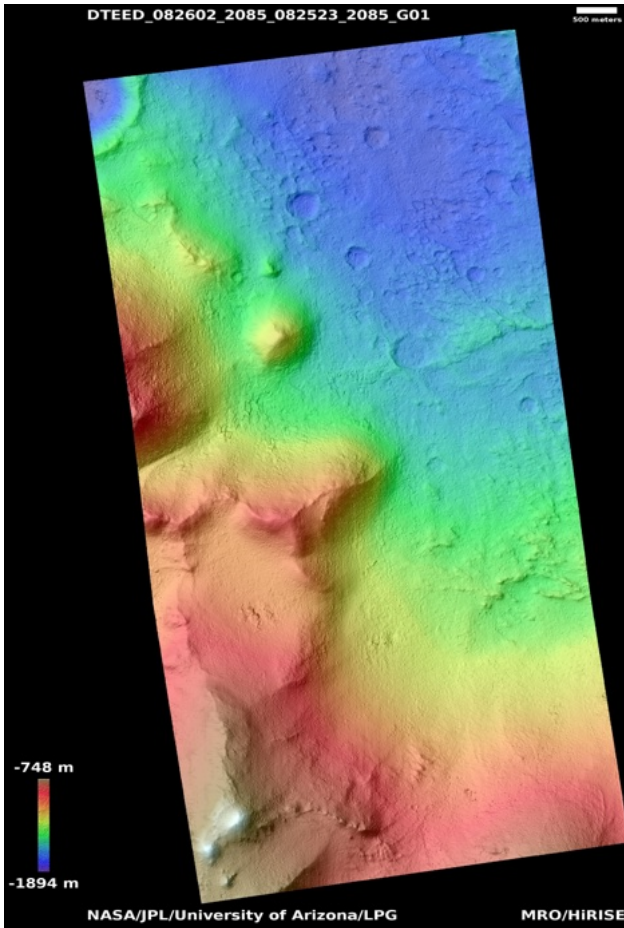
ESP\_067903\_1370

ESP\_073574\_1370



# Uphill facing scarps and lobate deformation on slope

DTEED\_082602\_2085\_082523\_2085\_G01



**Latitude:** 28.1276  
**Longitude:** 78.9793

**DTM Producer:** LPG | AXEL NOBLET

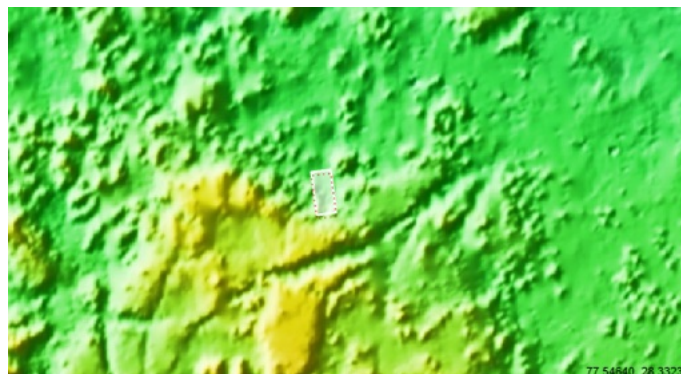
**For more details about this DTM, visit:**

[https://www.uahirise.org/dtm/ESP\\_082602\\_2085](https://www.uahirise.org/dtm/ESP_082602_2085)

**Stereo Pair:**

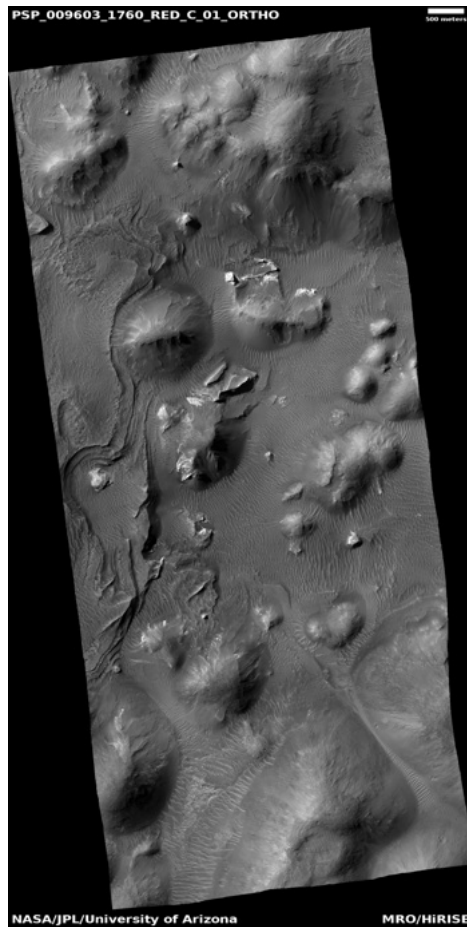
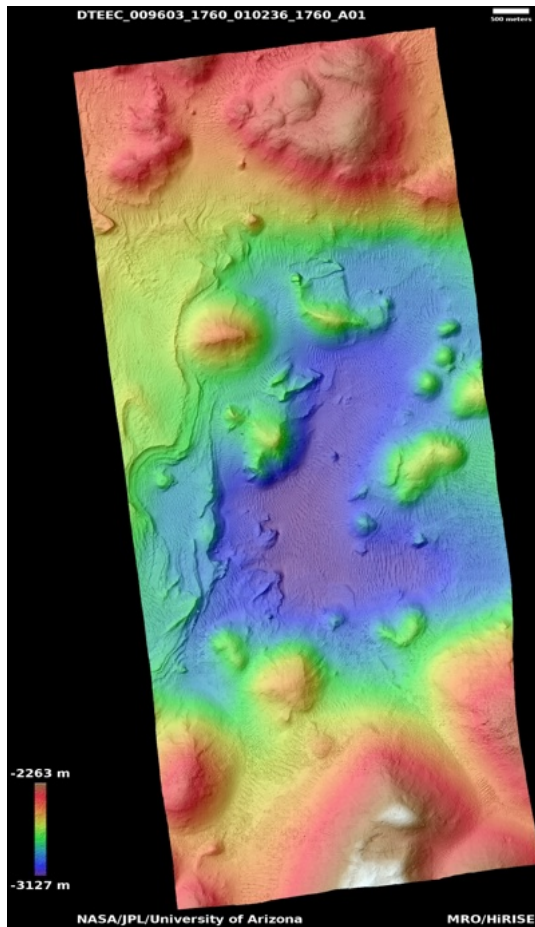
ESP\_082523\_2085

ESP\_082602\_2085



# Light-toned units on hummocks of chaotic terrain

DTEEC\_009603\_1760\_010236\_1760\_A01



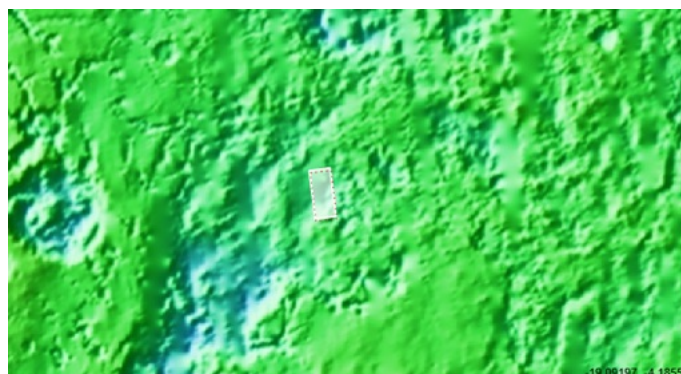
**Latitude:** -4.140  
**Longitude:** 341.65

**DTM Producer:** UA | BELLAMY BLAYNE FAUNCE  
**For more details about this DTM, visit:**

[https://www.uahirise.org/dtm/PSP\\_009603\\_1760](https://www.uahirise.org/dtm/PSP_009603_1760)

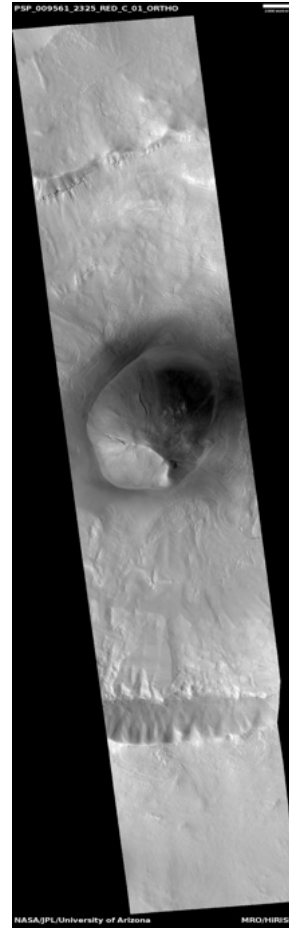
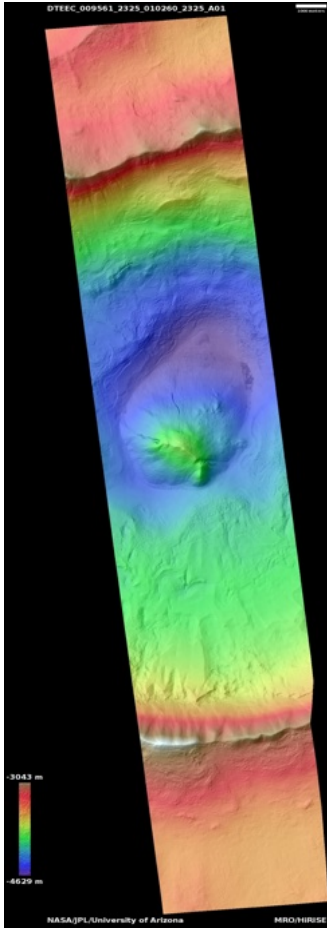
**Stereo Pair:**

PSP\_010236\_1760  
PSP\_009603\_1760



# Central peak of crater

DTEEC\_009561\_2325\_010260\_2325\_A01



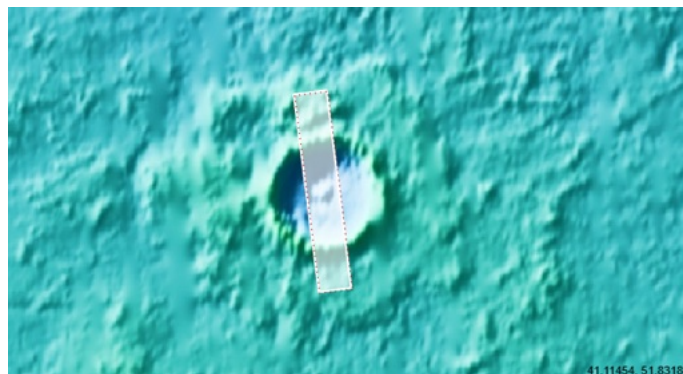
**Latitude:** 52.4055  
**Longitude:** 39.8552

**DTM Producer:** UA | DORA ELALAOUI-PINEDO  
**For more details about this DTM, visit:**

[https://www.uahirise.org/dtm/PSP\\_009561\\_2325](https://www.uahirise.org/dtm/PSP_009561_2325)

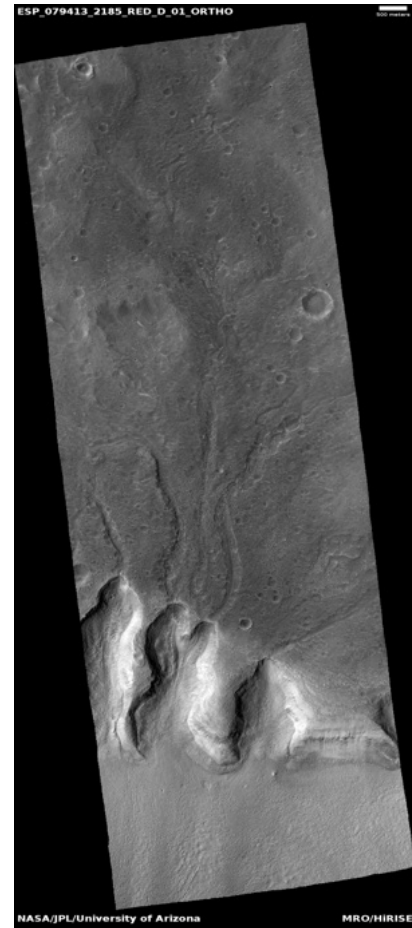
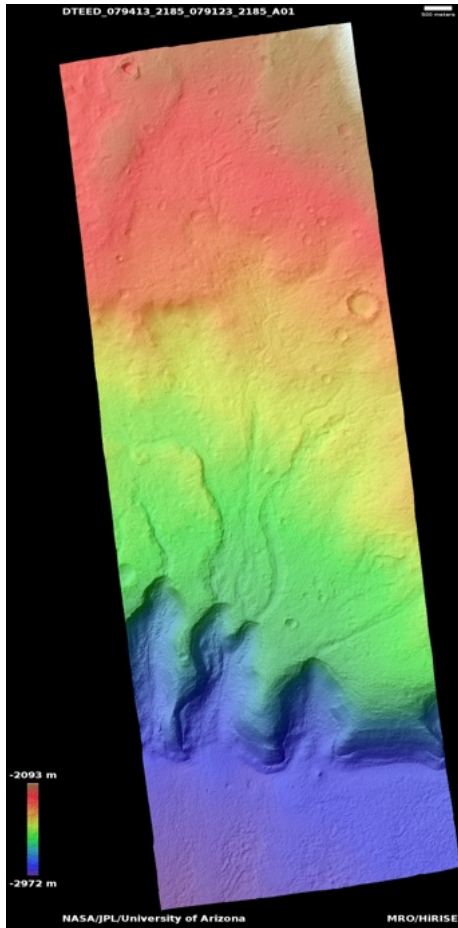
**Stereo Pair:**

PSP\_009561\_2325  
PSP\_010260\_2325



# Channels in Arabia Terra

DTEED\_079413\_2185\_079123\_2185\_A01



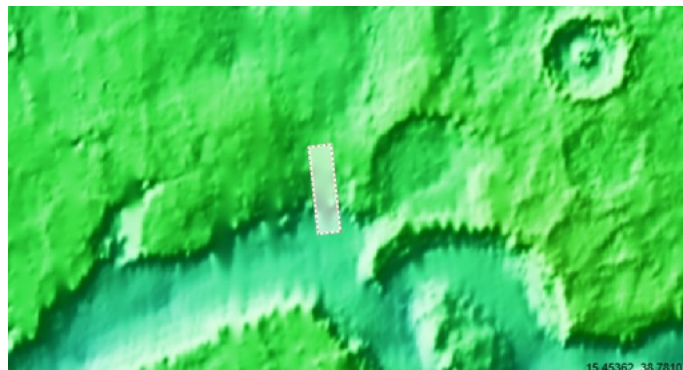
**Latitude:** 38.0549  
**Longitude:** 17.0615

**DTM Producer:** UA | BELLAMY BLAYNE FAUNCE  
**For more details about this DTM, visit:**

**Stereo Pair:**

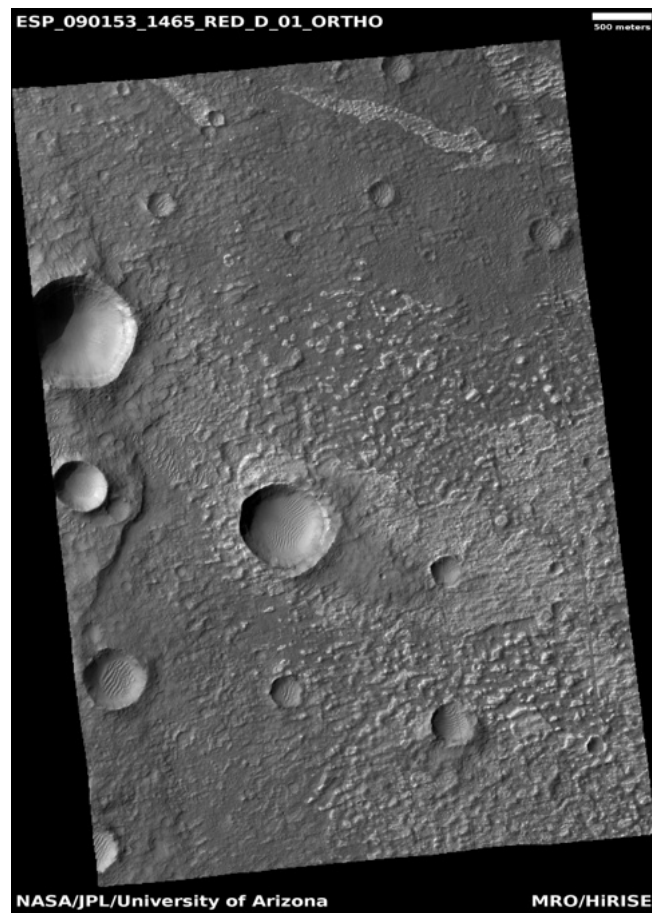
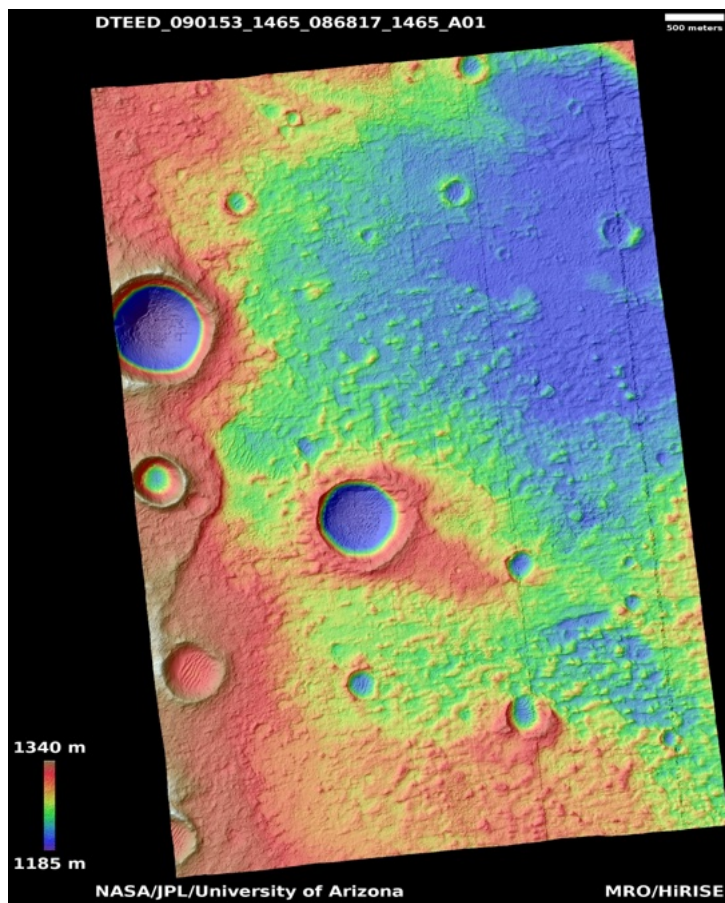
[https://www.uahirise.org/dtm/ESP\\_079413\\_2185](https://www.uahirise.org/dtm/ESP_079413_2185)

ESP\_079123\_2185  
ESP\_079413\_2185



# Crater wall with potential chloride deposit outcrop

DTEED\_090153\_1465\_086817\_1465\_A01



Latitude: -33.33  
Longitude: 205.41

DTM Producer: UA | BELLAMY BLAYNE FAUNCE  
For more details about this DTM, visit:

[https://www.uahirise.org/dtm/ESP\\_090153\\_1465](https://www.uahirise.org/dtm/ESP_090153_1465)

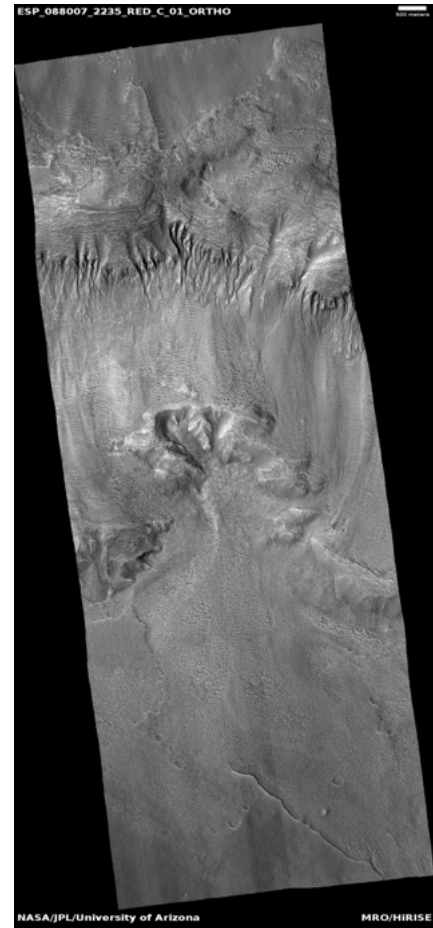
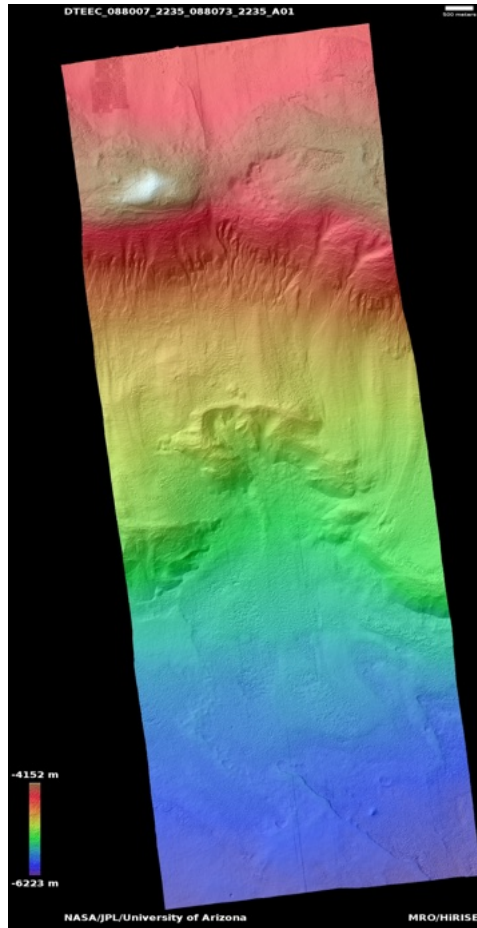
Stereo Pair:

ESP\_086817\_1465  
ESP\_090153\_1465



# Gullies on north wall of Nier Crater

DTEEC\_088007\_2235\_088073\_2235\_A01



**Latitude:** 43.0831  
**Longitude:** 106.1

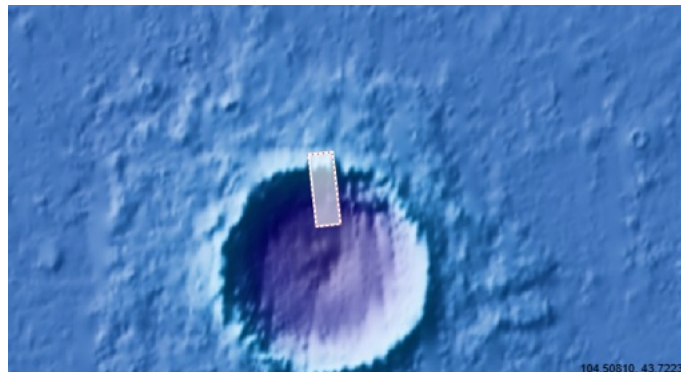
**DTM Producer:** UA | BELLAMY BLAYNE FAUNCE  
**For more details about this DTM, visit:**

[https://www.uahirise.org/dtm/ESP\\_088007\\_2235](https://www.uahirise.org/dtm/ESP_088007_2235)

**Stereo Pair:**

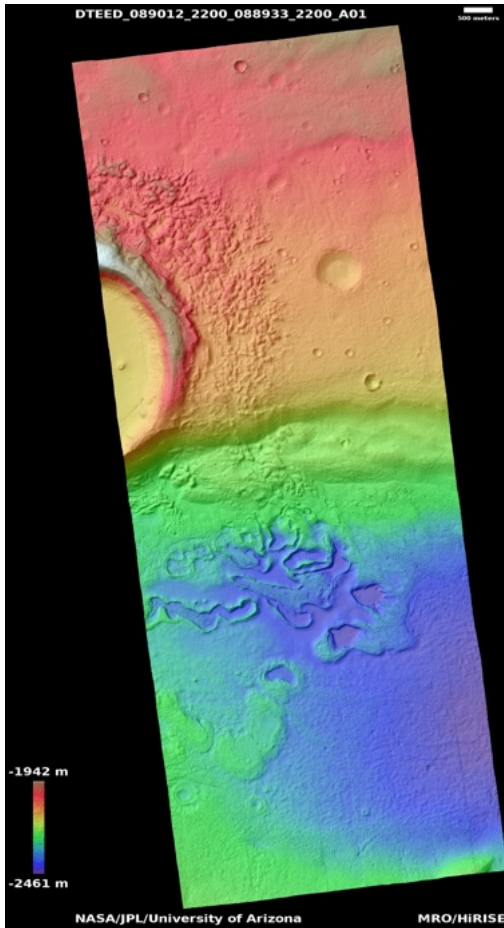
ESP\_088073\_2235

ESP\_088007\_2235



# Features around crater in Arabia Terra

DTEED\_089012\_2200\_088933\_2200\_A01



**Latitude:** 39.858  
**Longitude:** 26.460

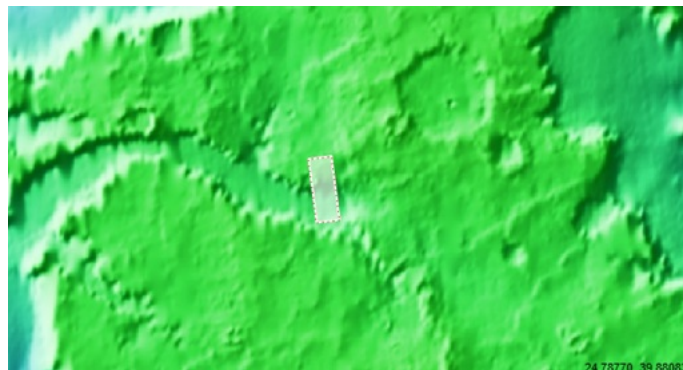
**DTM Producer:** UA | BELLAMY BLAYNE FAUNCE  
**For more details about this DTM, visit:**

**Stereo Pair:**

[https://www.uahirise.org/dtm/ESP\\_089012\\_2200](https://www.uahirise.org/dtm/ESP_089012_2200)

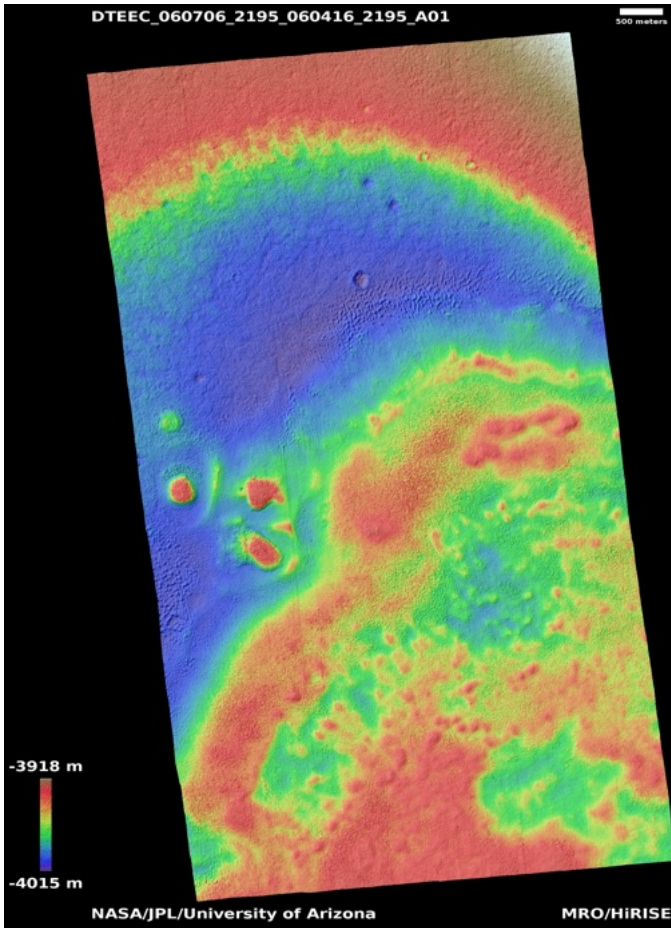
ESP\_089012\_2200

ESP\_088933\_2200



# Candidate landing site for SpaceX Starship near Arcadia Planitia

DTEEC\_060706\_2195\_060416\_2195\_A01



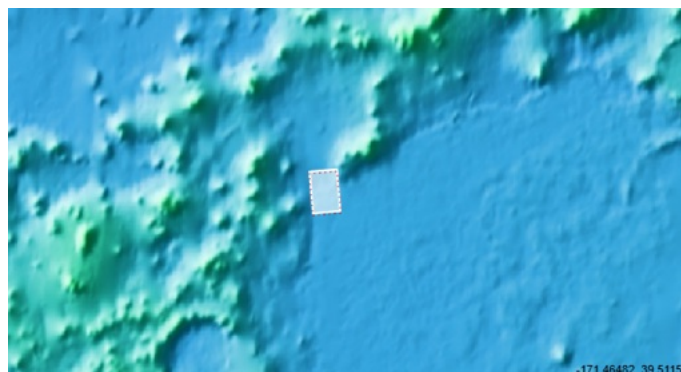
**Latitude:** 39.083  
**Longitude:** 189.79

**Stereo Pair:**

ESP\_060416\_2195  
ESP\_060706\_2195

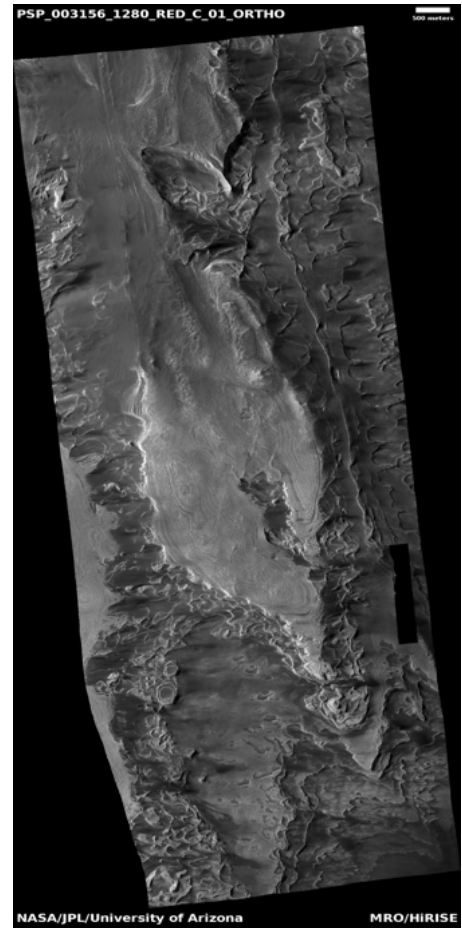
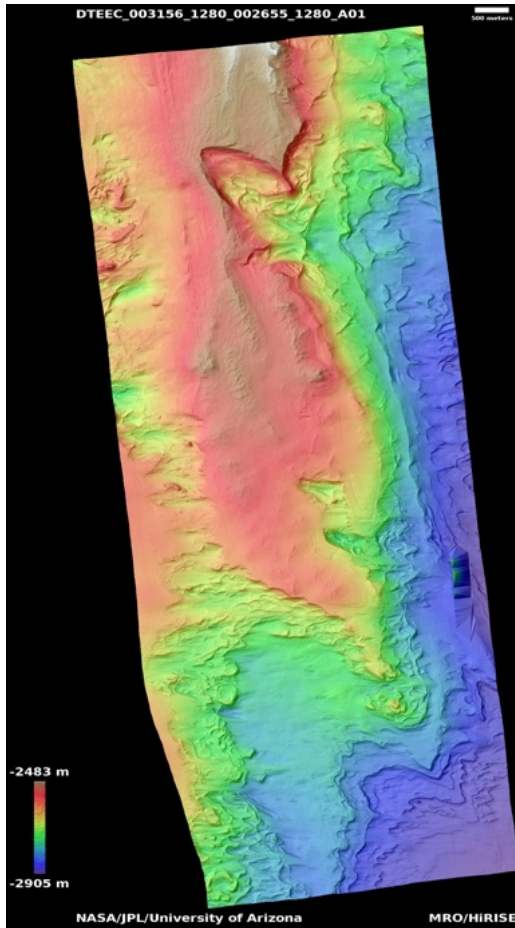
**DTM Producer:** UA | BELLAMY BLAYNE FAUNCE  
**For more details about this DTM, visit:**

[https://www.uahirise.org/dtm/ESP\\_060706\\_2195](https://www.uahirise.org/dtm/ESP_060706_2195)



# Cross-cutting layers in Galle Crater

DTEEC\_003156\_1280\_002655\_1280\_A01



**Latitude:** -51.7691  
**Longitude:** 329.992

**DTM Producer:** UA | BELLAMY BLAYNE FAUNCE  
**For more details about this DTM, visit:**

[https://www.uahirise.org/dtm/PSP\\_003156\\_1280](https://www.uahirise.org/dtm/PSP_003156_1280)

**Stereo Pair:**

PSP\_002655\_1280

PSP\_003156\_1280

