



HIGH RESOLUTION IMAGING SCIENCE EXPERIMENT



Digital Terrain Models Released to the PDS

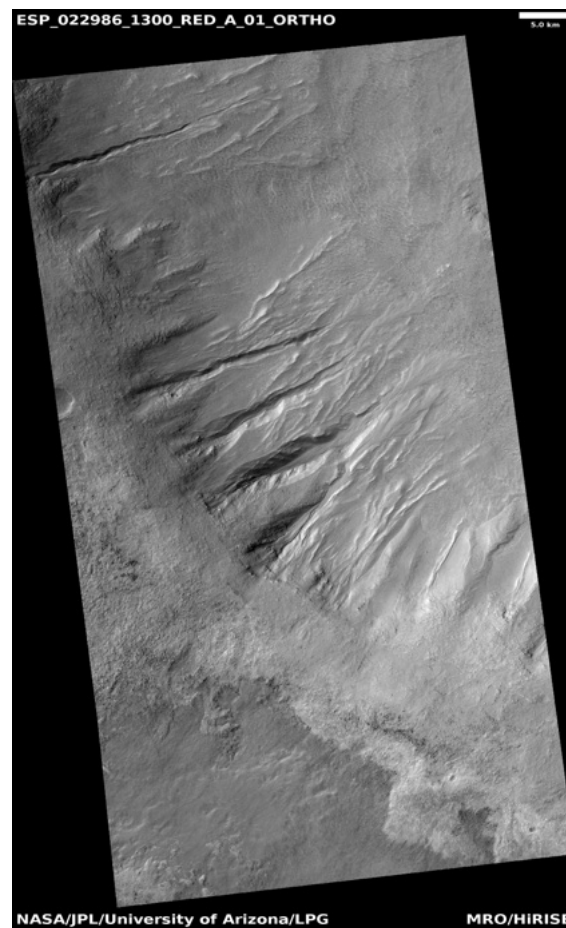
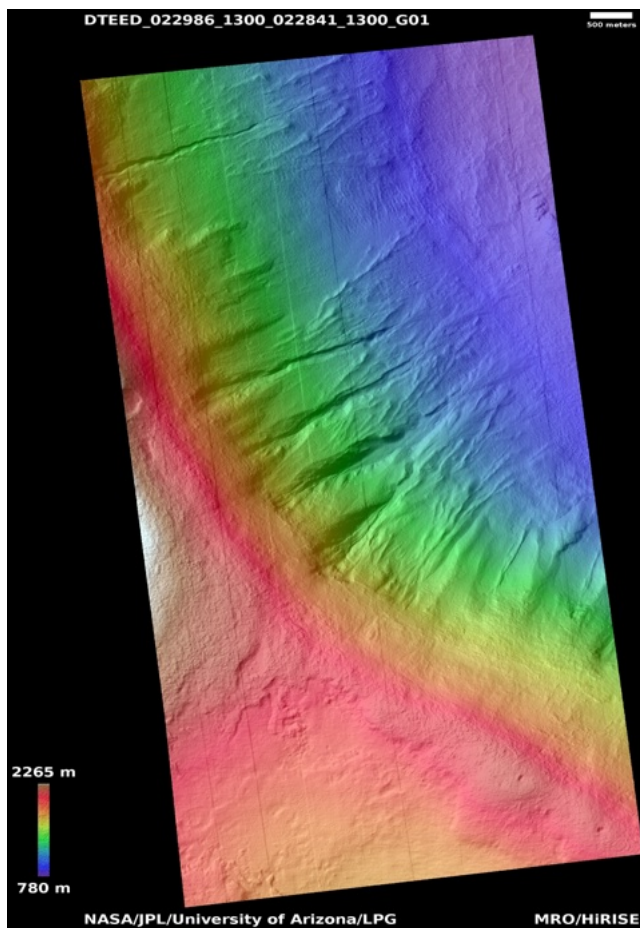
April, 2026

Edited by Dora Elalaoui-Pinedo | UA

| | |
|---|---|
| Multiple eras of gully activity along southern hemisphere crater wall | 1 |
| Gullies in north mid-latitude crater | 2 |
| Fresh gullies | 3 |
| Angular unconformity in Cerberus Fossae wall | 4 |
| Deposits in crater depression | 5 |
| Exposure of south polar layered deposits | 6 |
| South polar dune field | 7 |

Multiple eras of gully activity along southern hemisphere crater wall

DTEED_022986_1300_022841_1300_G01



Latitude: -49.7895

Longitude: 13.7861

DTM Producer: LPG | AXEL NOBLET

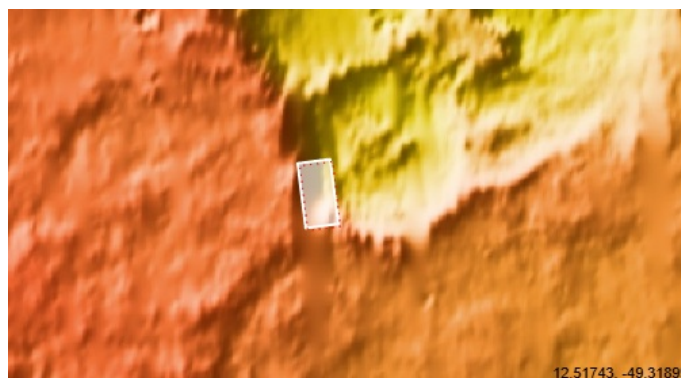
For more details about this DTM, visit:

https://www.uahirise.org/dtm/ESP_022986_1300

Stereo Pair:

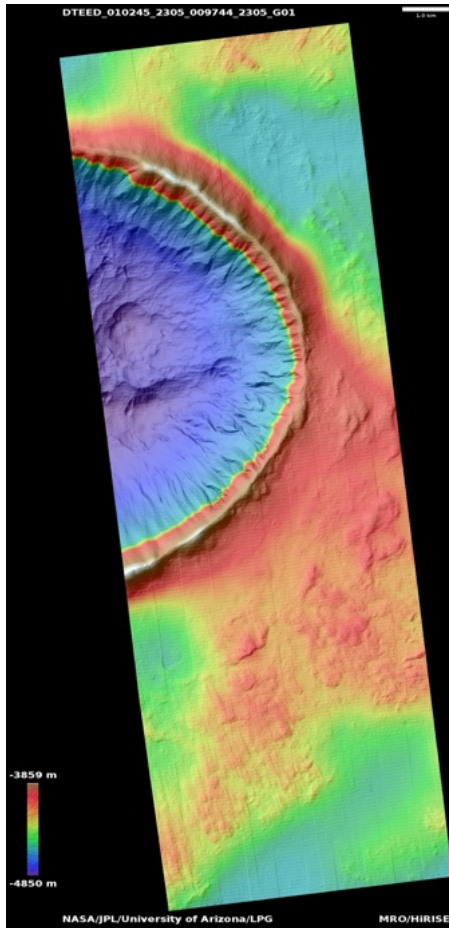
ESP_022841_1300

ESP_022986_1300



Gullies in north mid-latitude crater

DTEED_010245_2305_009744_2305_G01



Latitude: 50.1177
Longitude: 84.3037

DTM Producer: LPG | AXEL NOBLET

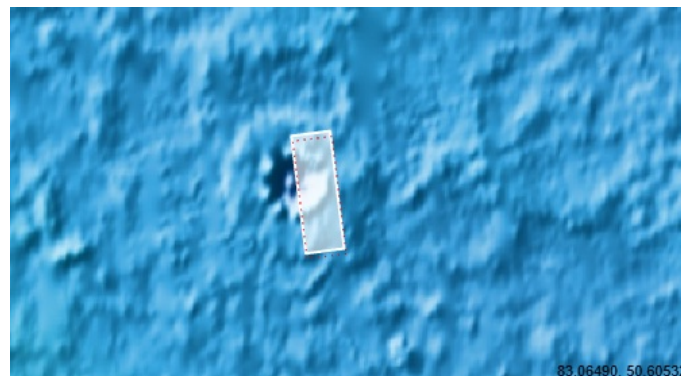
For more details about this DTM, visit:

https://www.uahirise.org/dtm/PSP_010245_2305

Stereo Pair:

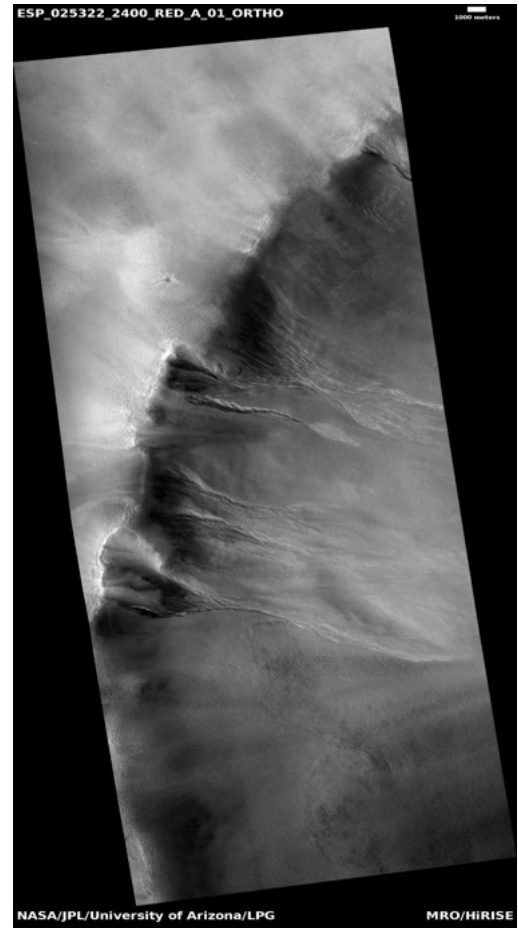
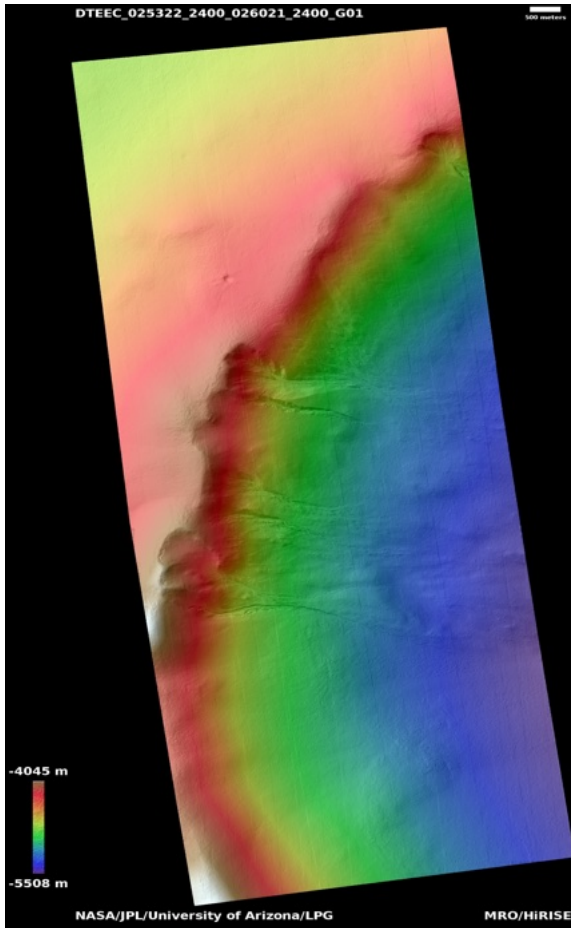
PSP_009744_2305

PSP_010245_2305



Fresh gullies

DTEEC_025322_2400_026021_2400_G01



Latitude: 59.4525
Longitude: 302.165

DTM Producer: LPG | AXEL NOBLET

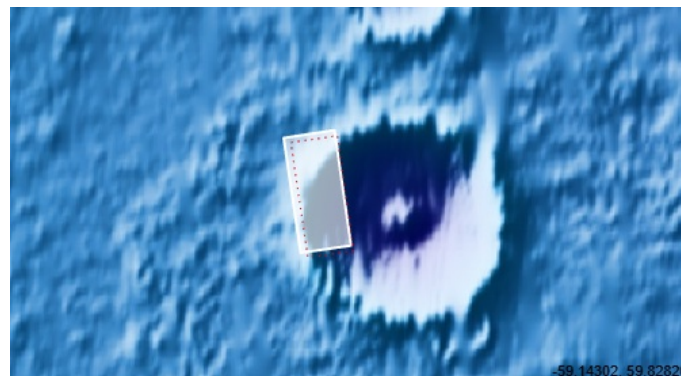
For more details about this DTM, visit:

https://www.uahirise.org/dtm/ESP_025322_2400

Stereo Pair:

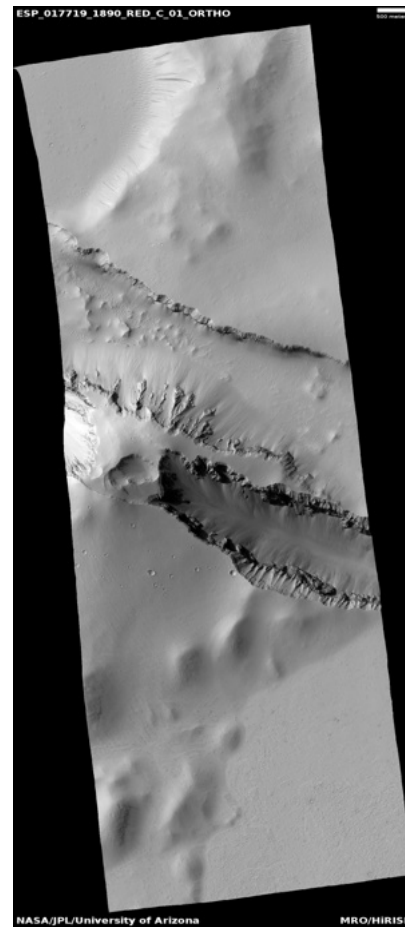
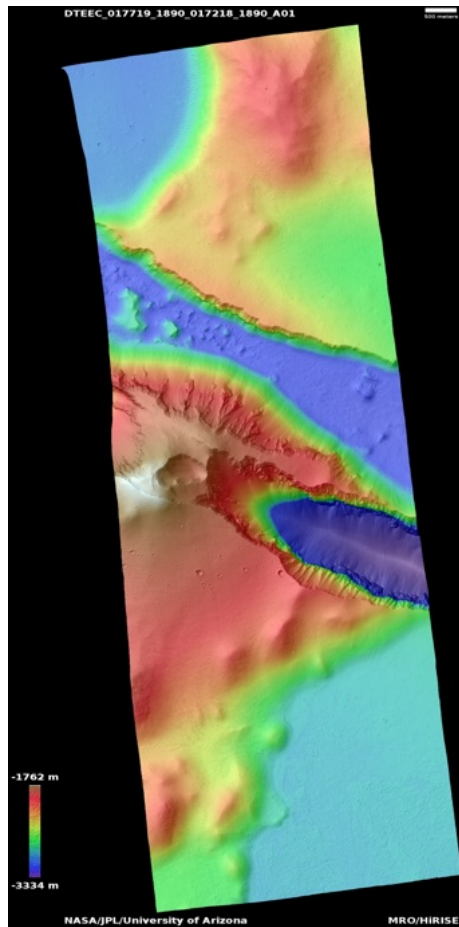
ESP_025322_2400

ESP_026021_2400



Angular unconformity in Cerberus Fossae wall

DTEEC_017719_1890_017218_1890_A01



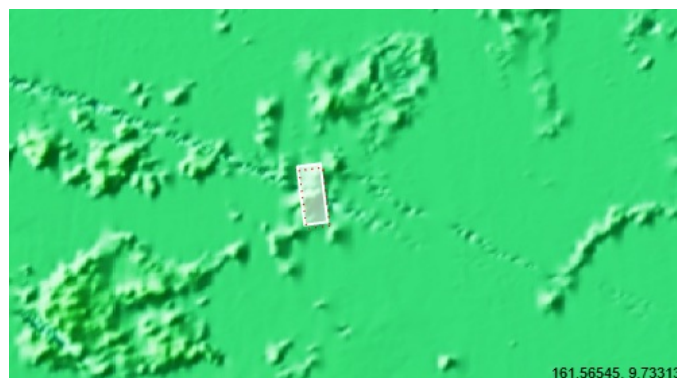
Latitude: 8.96846
Longitude: 162.845

DTM Producer: UA | BELLAMY BLAYNE FAUNCE
For more details about this DTM, visit:

https://www.uahirise.org/dtm/ESP_017719_1890

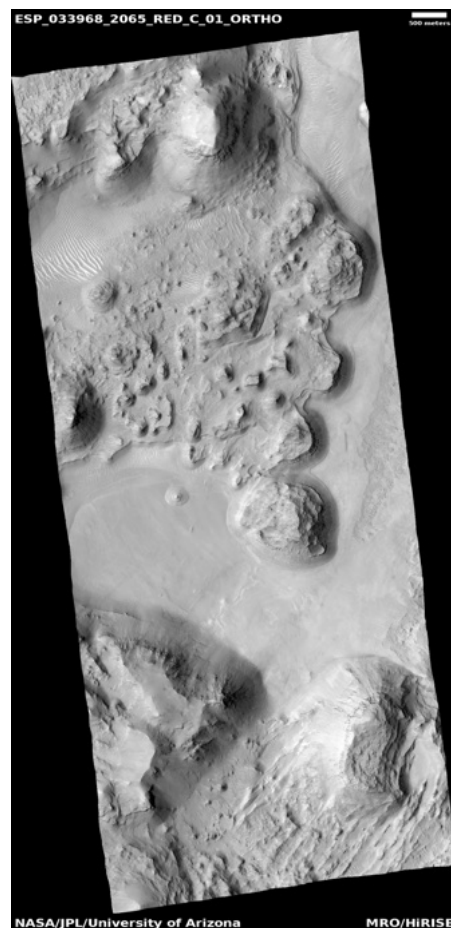
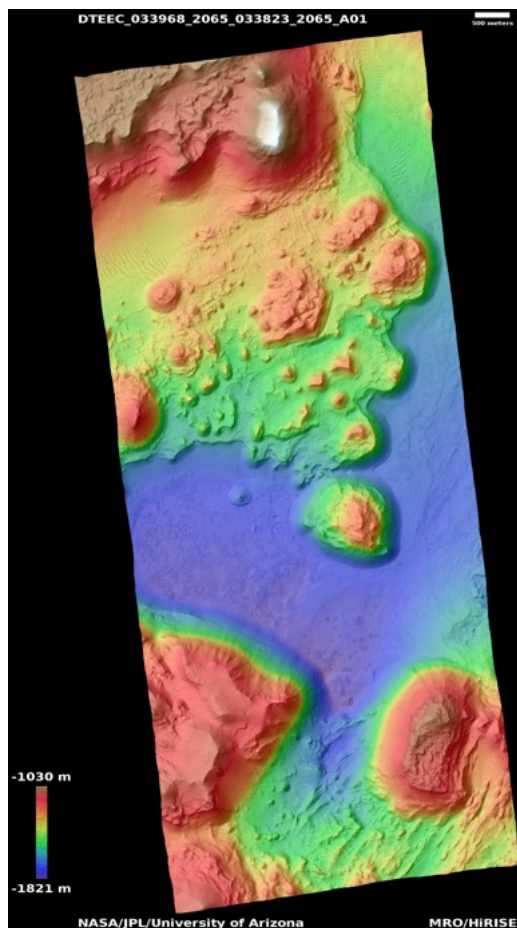
Stereo Pair:

ESP_017719_1890
ESP_017218_1890



Deposits in crater depression

DTEEC_033968_2065_033823_2065_A01



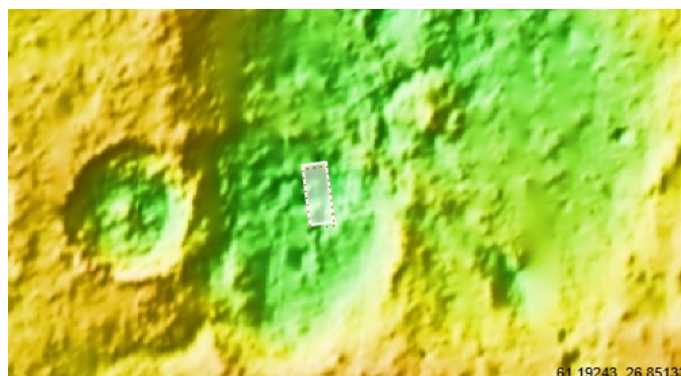
Latitude: 26.1571
Longitude: 62.454

DTM Producer: UA | BELLAMY BLAYNE FAUNCE
For more details about this DTM, visit:

https://www.uahirise.org/dtm/ESP_033968_2065

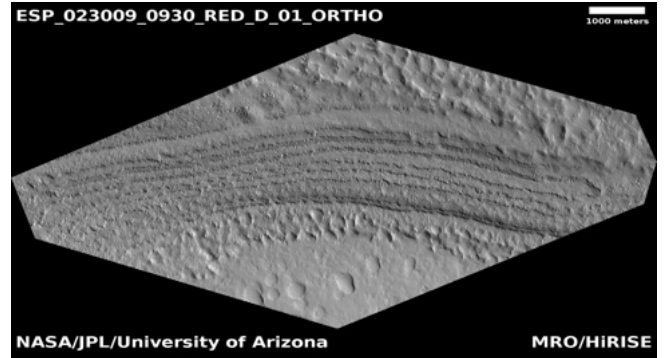
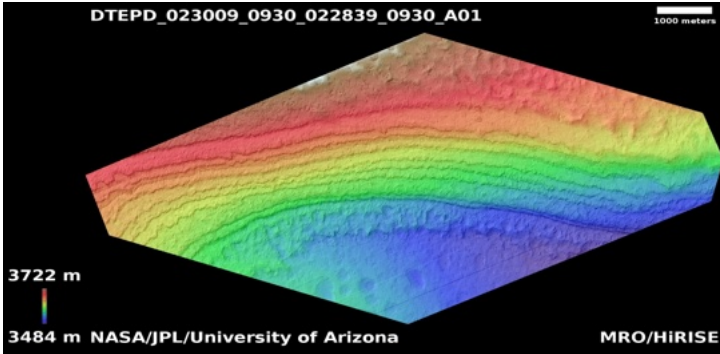
Stereo Pair:

ESP_033823_2065
ESP_033968_2065



Exposure of south polar layered deposits

DTEPD_023009_0930_022839_0930_A01



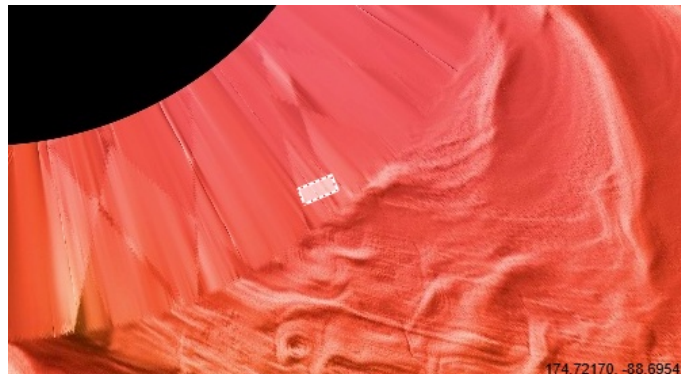
Latitude: -87.1979
Longitude: 141.625

DTM Producer: UA | RAY OLGUIN
For more details about this DTM, visit:

https://www.uahirise.org/dtm/ESP_023009_0930

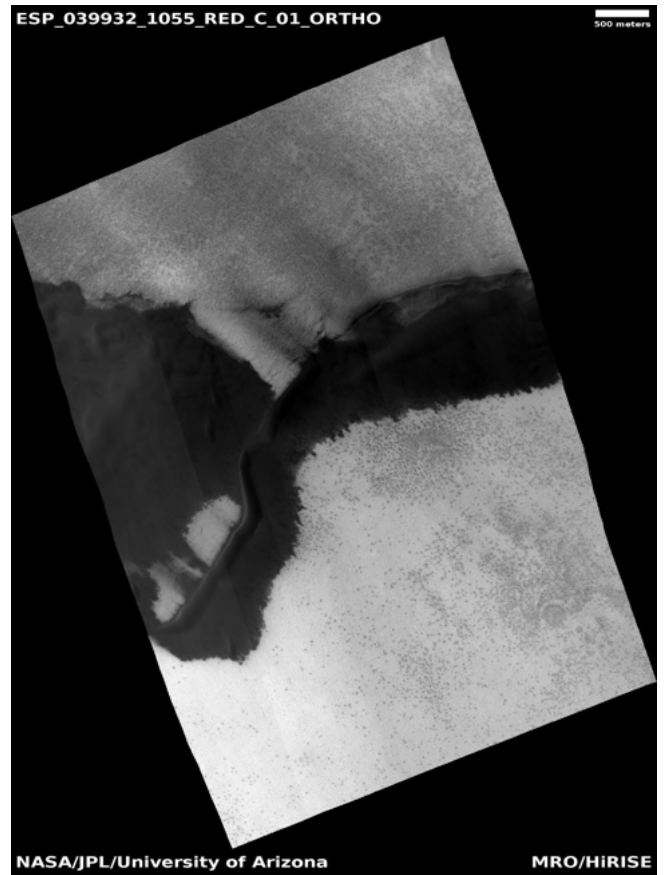
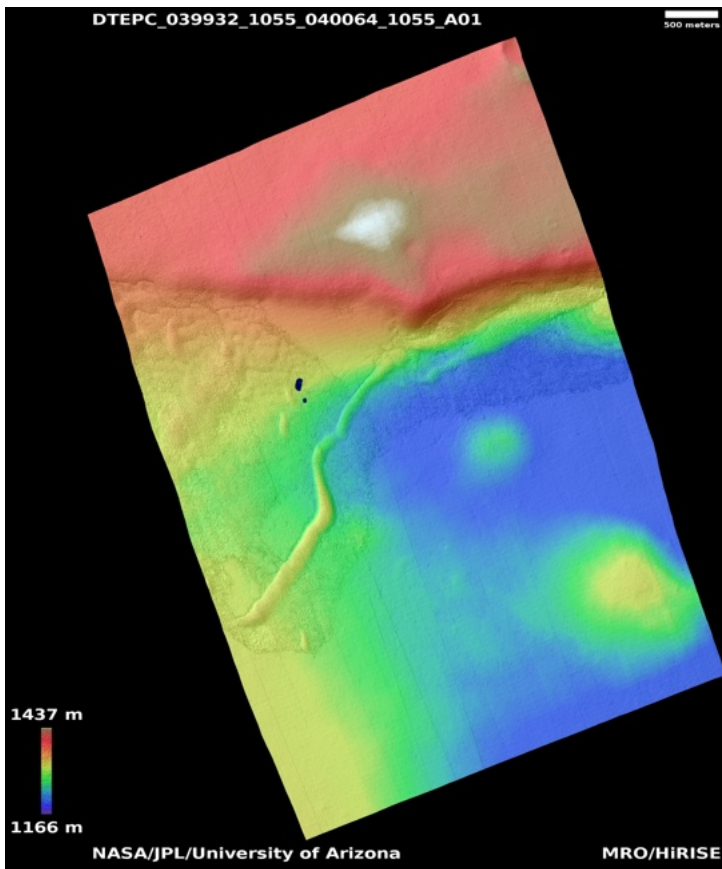
Stereo Pair:

ESP_022839_0930
ESP_023009_0930



South polar dune field

DTEPC_039932_1055_040064_1055_A01



Latitude: -74.2521
Longitude: 352.253

DTM Producer: UA | BELLAMY BLAYNE FAUNCE
For more details about this DTM, visit:

https://www.uahirise.org/dtm/ESP_039932_1055

Stereo Pair:

ESP_039932_1055
ESP_040064_1055

