



HIGH RESOLUTION IMAGING SCIENCE EXPERIMENT



DTM PDS RELEASES

September 2025

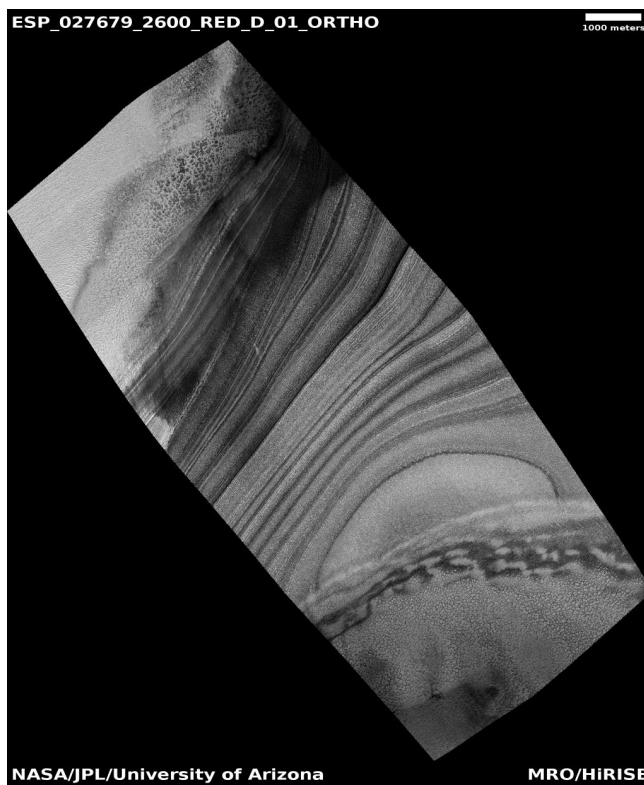
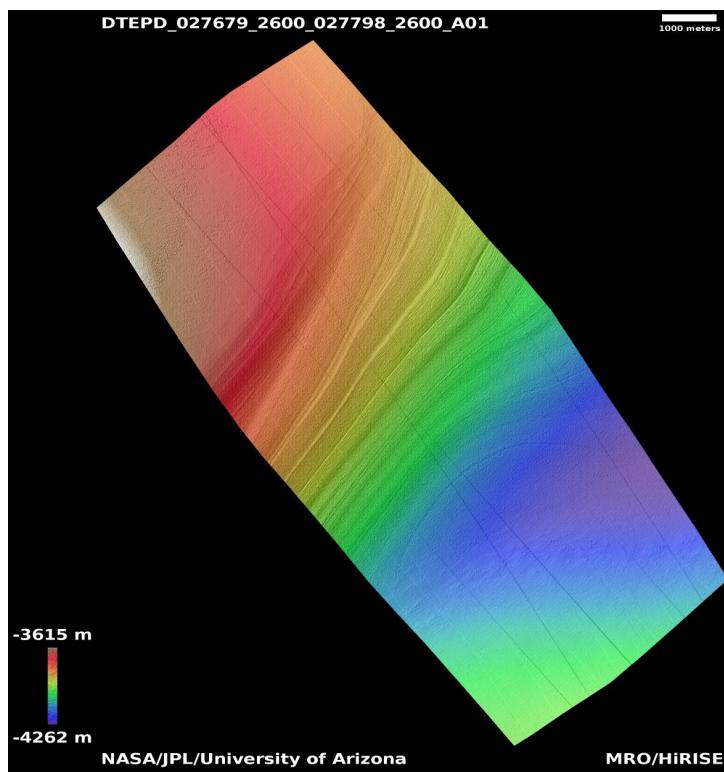
Edited by Kris Akers | UA

DTMs Included this Month

Unconformity in north polar layered deposits	1
Material flowing through gap in crater rim east of Hellas Planitia	2
Depressions in Arena Colles	3
Gullies in northern mid-latitude crater	4
Terrain in Phlegra region	5
Region outside crater in Phlegra Montes	6
Phlegra Montes	7
Candidate landing site for SpaceX Starship in Arcadia region	8
Possible multi-terraced crater in Arcadia Planitia	9
Gullies	10
Expanded secondaries on possible glacial unit	11
Chaos terrain near source of Osuga Valles	12
Gully monitoring	13
Gullied crater in CTX image D20_035027_2251_XI_45N051W	14
Gullied slope of 20-kilometer diameter impact crater in Acidalia Planitia	15

Unconformity in north polar layered deposits

DTEPD_027679_2600_027798_2600_A01



Latitude: 80.0 **Longitude:** 22.2

DTM Producer: UA | KRIS AMANDA AKERS

Stereo Pair:

ESP_027798_2600

ESP_027679_2600

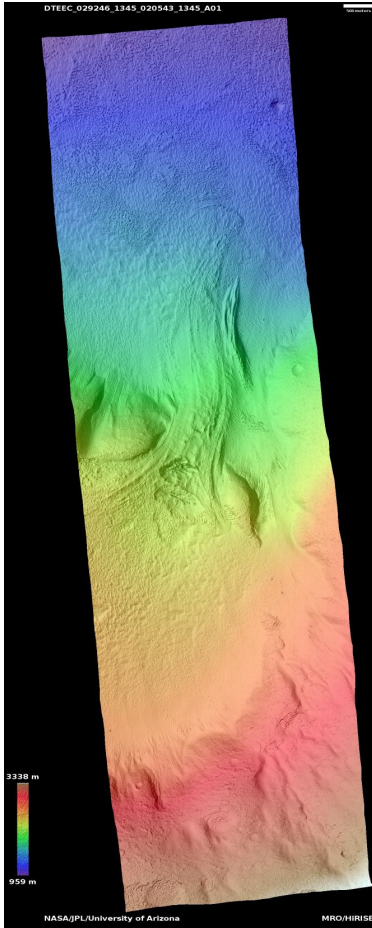
For more details about this DTM, visit:

https://www.uahirise.org/dtm/ESP_027679_2600



Material flowing through gap in crater rim east of Hellas Planitia

DTEEC_029246_1345_020543_1345_A01



Latitude: -45.3 **Longitude:** 111.6

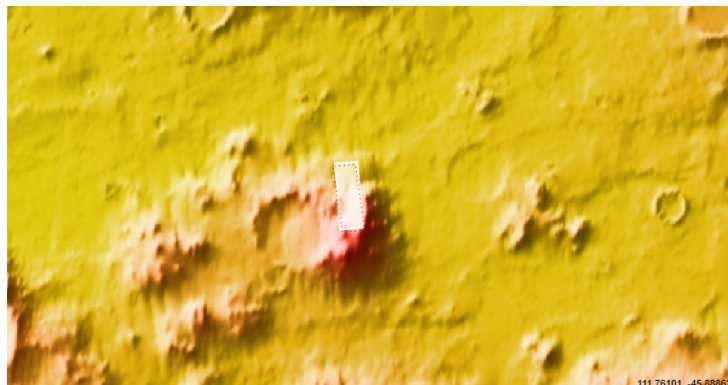
DTM Producer: UA | BELLAMY BLAYNE FAUNCE

Stereo Pair:

ESP_029246_1345
ESP_020543_1345

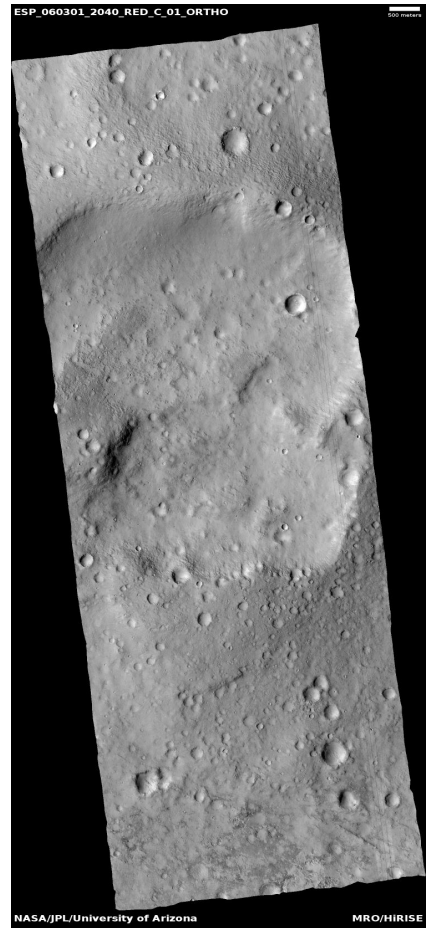
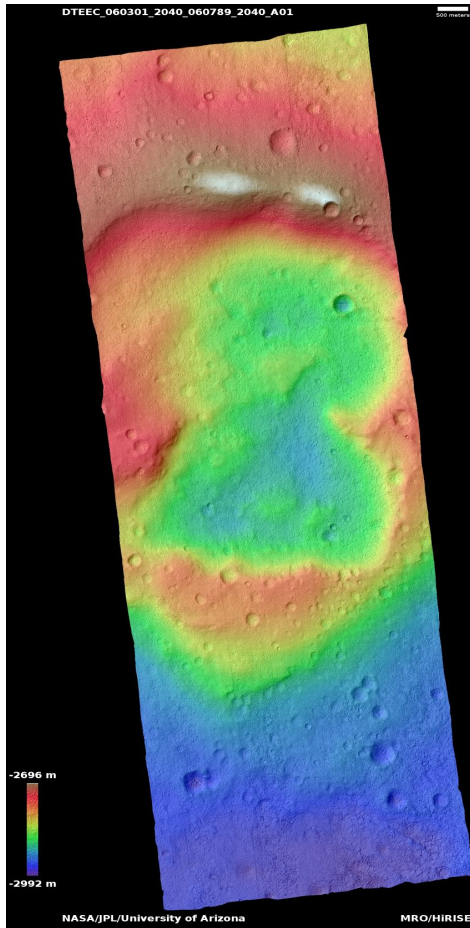
For more details about this DTM, visit:

https://www.uahirise.org/dtm/ESP_029246_1345



Depressions in Arena Colles

DTEEC_060301_2040_060789_2040_A01



Latitude: -45.3 **Longitude:** 111.6

DTM Producer: UA | BELLAMY BLAYNE FAUNCE

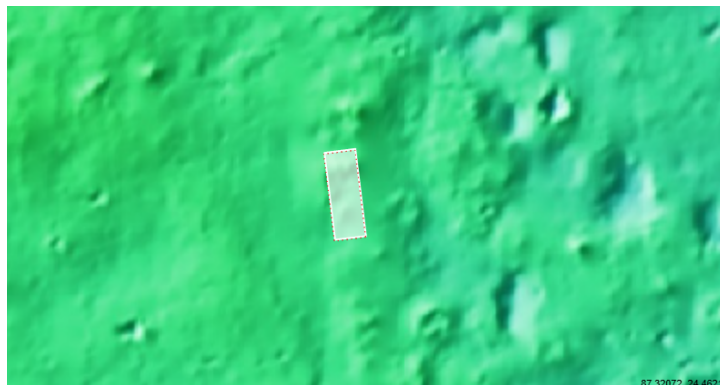
Stereo Pair:

ESP_060301_2040

ESP_060789_2040

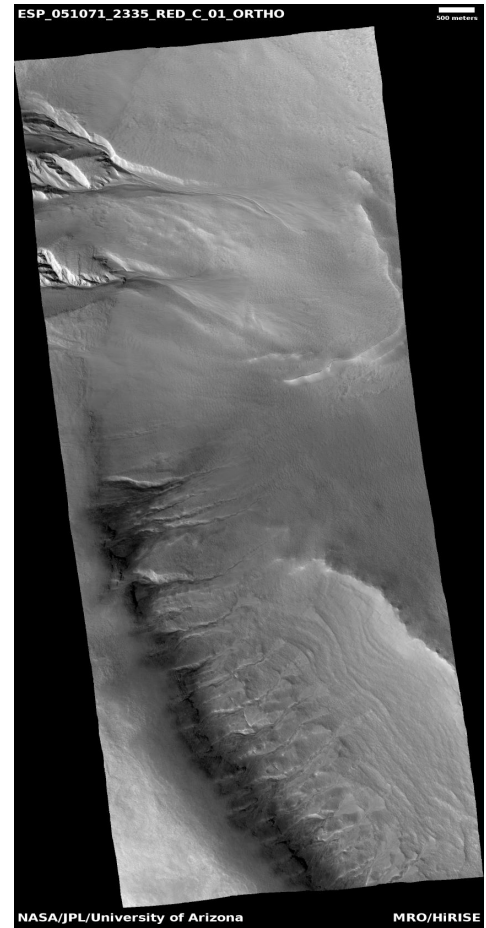
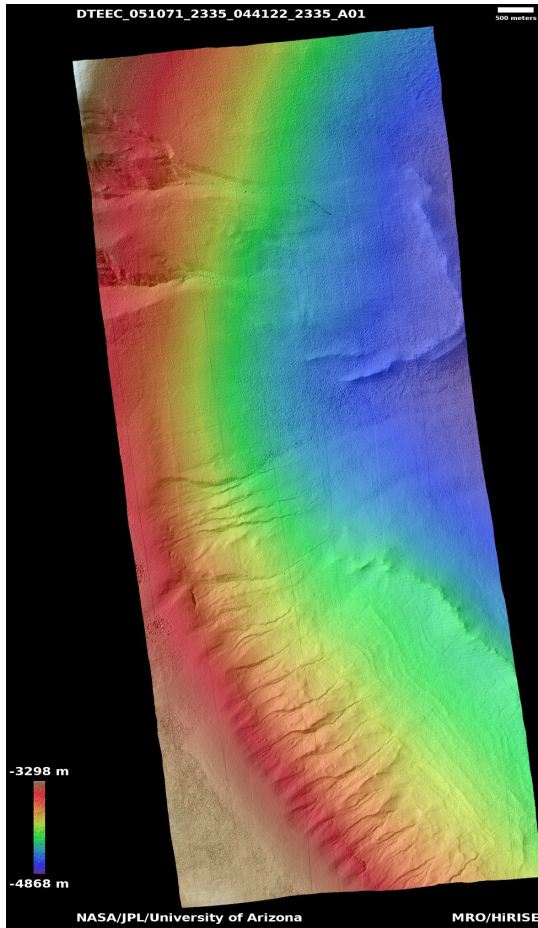
For more details about this DTM, visit:

https://www.uahirise.org/dtm/ESP_060301_2040



Gullies in northern mid-latitude crater

DTEEC_051071_2335_044122_2335_A01



Latitude: 53.0 **Longitude:** 57.5

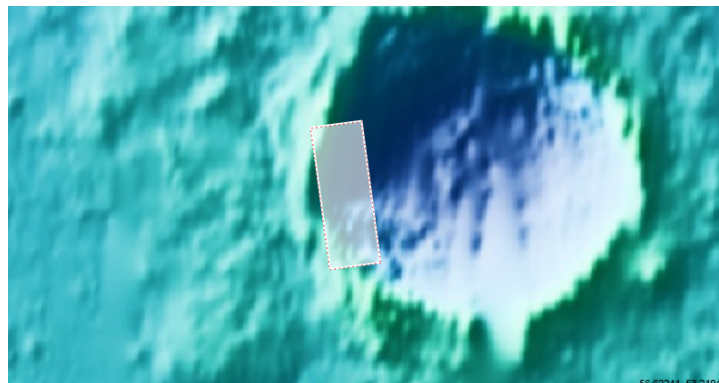
DTM Producer: UA | BELLAMY BLAYNE FAUNCE

Stereo Pair:

ESP_044122_2335
ESP_051071_2335

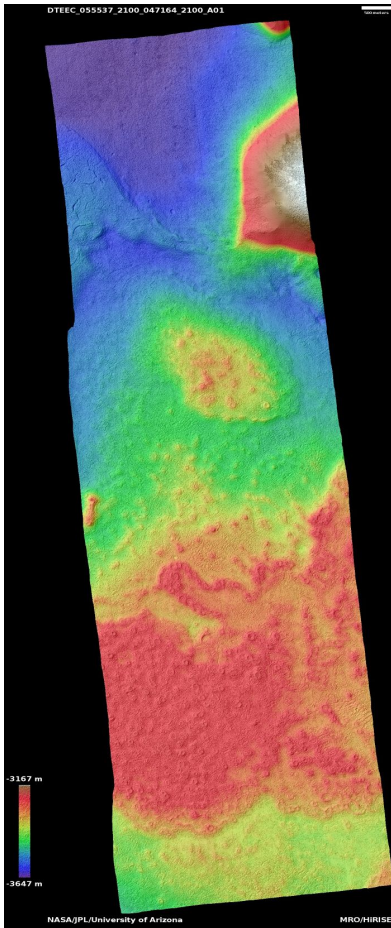
For more details about this DTM, visit:

https://www.uahirise.org/dtm/ESP_051071_2335



Terrain in Phlegra region

DTEEC_055537_2100_047164_2100_A01



Latitude: 29.7 **Longitude:** 173.9

DTM Producer: UA | BELLAMY BLAYNE FAUNCE

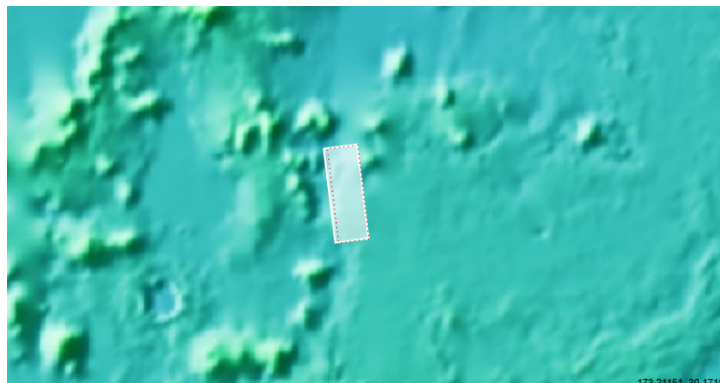
Stereo Pair:

ESP_047164_2100

ESP_055537_2100

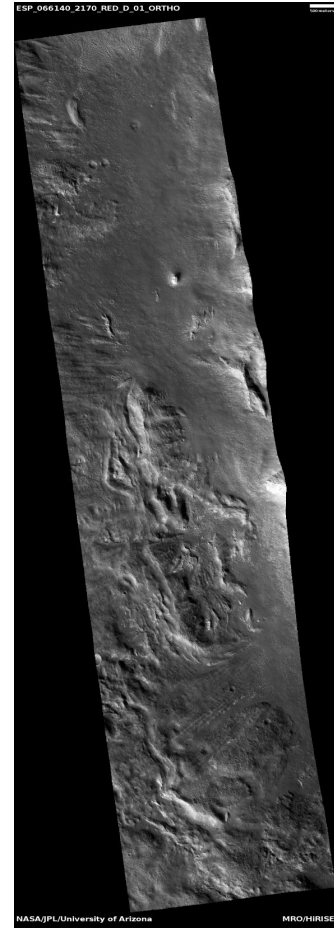
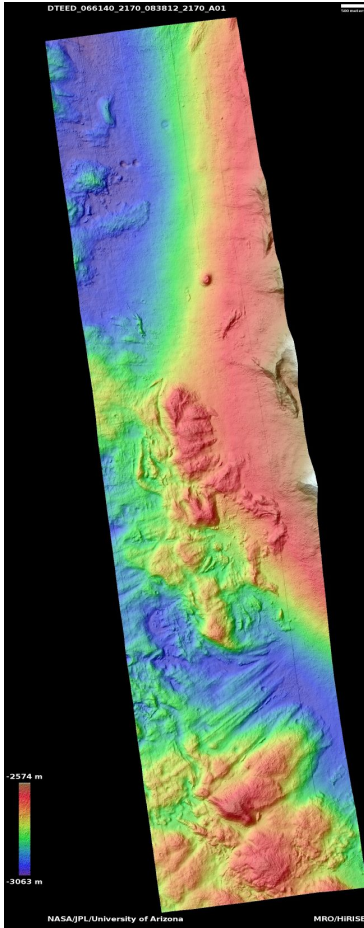
For more details about this DTM, visit:

https://www.uahirise.org/dtm/ESP_055537_2100



Region outside crater in Phlegra Montes

DTEED_066140_2170_083812_2170_A01



Latitude: 37.4 **Longitude:** 161.5

DTM Producer: UA | KRIS AMANDA AKERS

Stereo Pair:

ESP_066140_2170

ESP_083812_2170

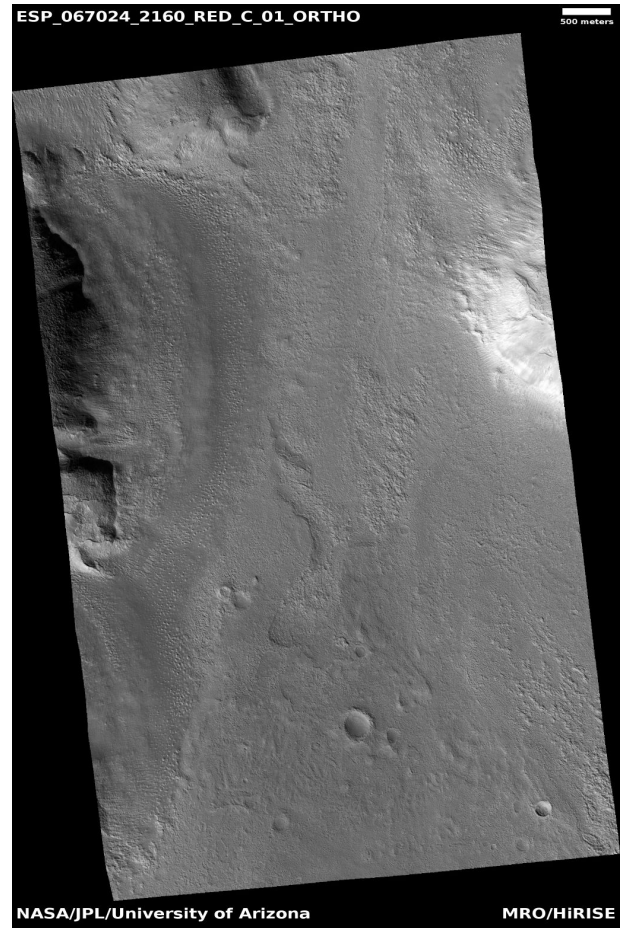
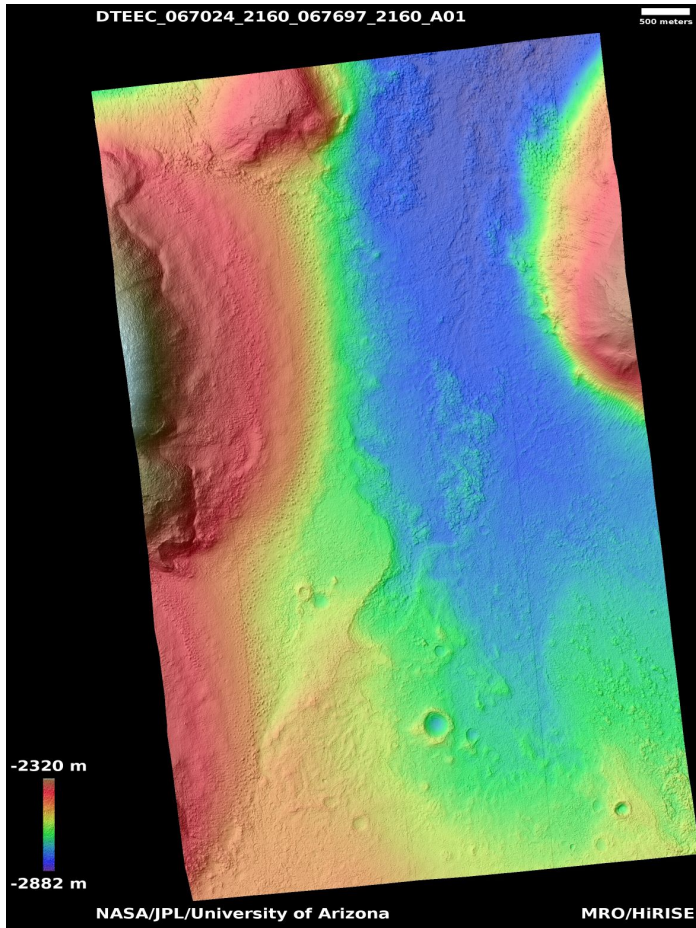
For more details about this DTM, visit:

https://www.uahirise.org/dtm/ESP_066140_2170



Phlegra Montes

DTEEC_067024_2160_067697_2160_A01



Latitude: 35.5 **Longitude:** 160.9

DTM Producer: UA | KRIS AMANDA AKERS

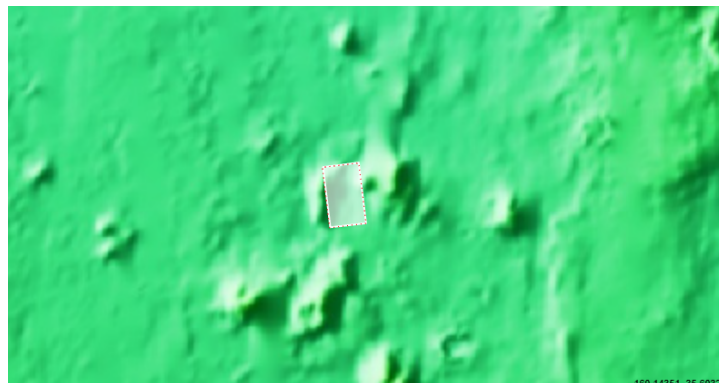
Stereo Pair:

ESP_067024_2160

ESP_067697_2160

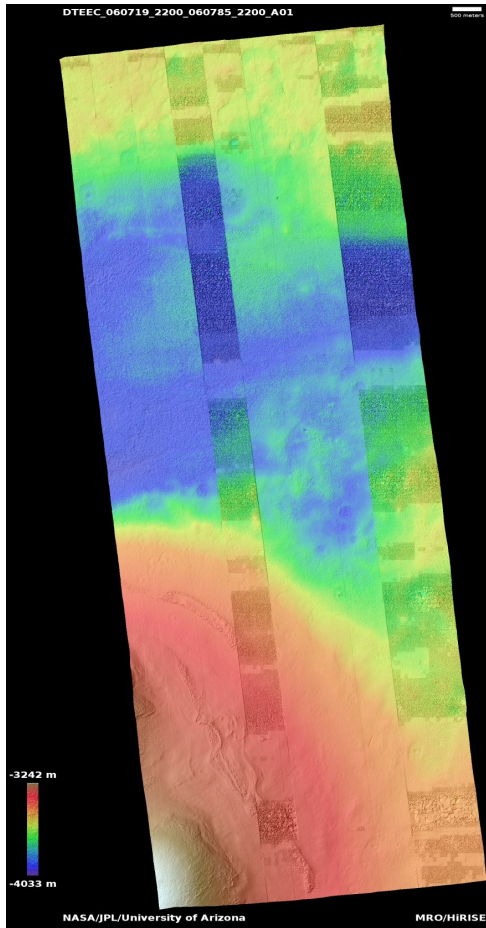
For more details about this DTM, visit:

https://www.uahirise.org/dtm/ESP_067024_2160



Candidate landing site for SpaceX Starship in Arcadia region

DTEEC_060719_2200_060785_2200_A01



Latitude: 39.8 **Longitude:** 195.6

DTM Producer: UA | BELLAMY BLAYNE FAUNCE

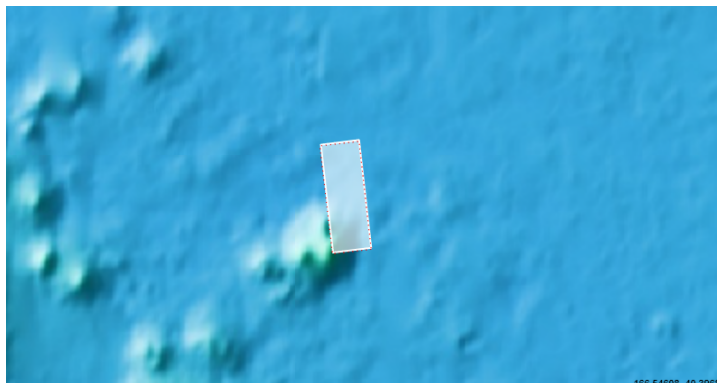
Stereo Pair:

ESP_060719_2200

ESP_060785_2200

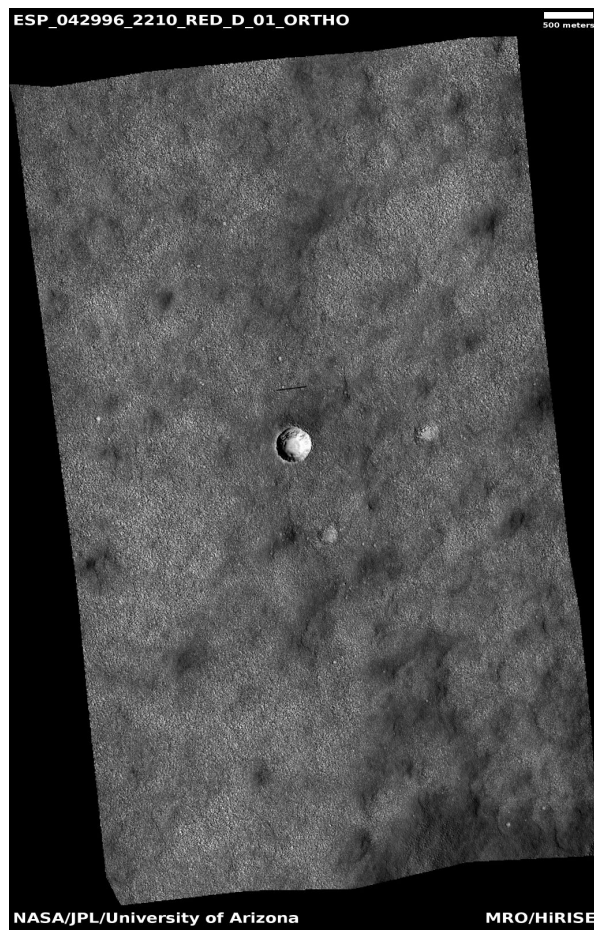
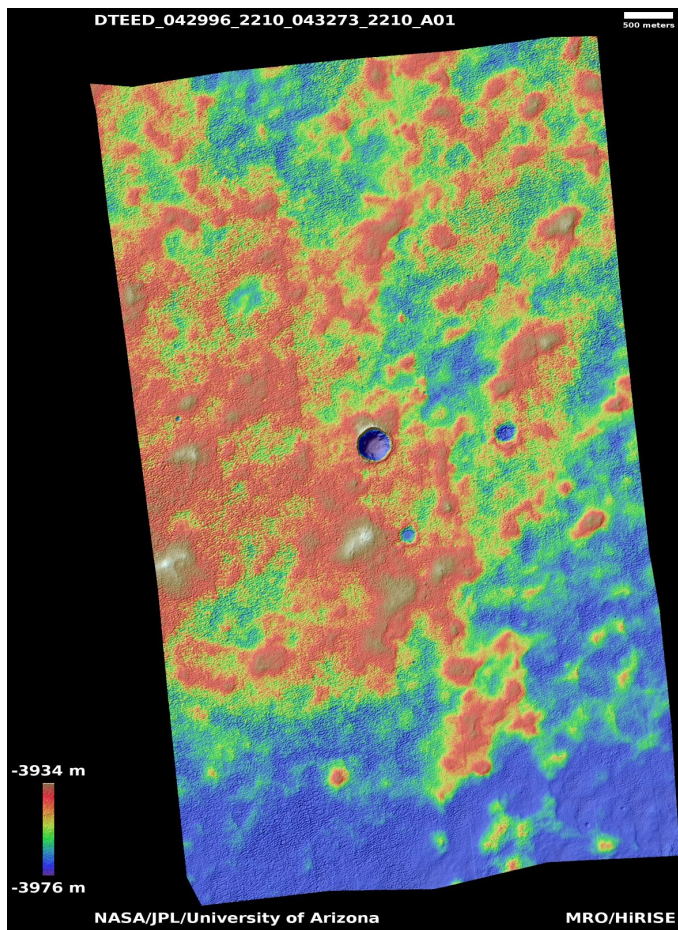
For more details about this DTM, visit:

https://www.uahirise.org/dtm/ESP_060719_2200



Possible multi-terraced crater in Arcadia Planitia

DTEED_042996_2210_043273_2210_A01



Latitude: 40.6 **Longitude:** 197.5

DTM Producer: UA | RAY OLGUIN

Stereo Pair:

ESP_043273_2210

ESP_042996_2210

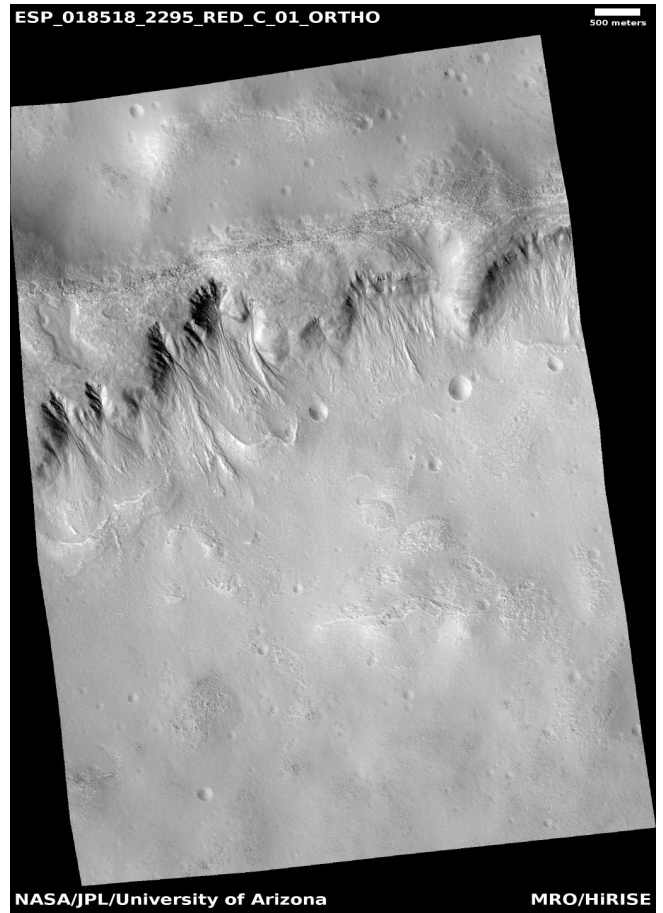
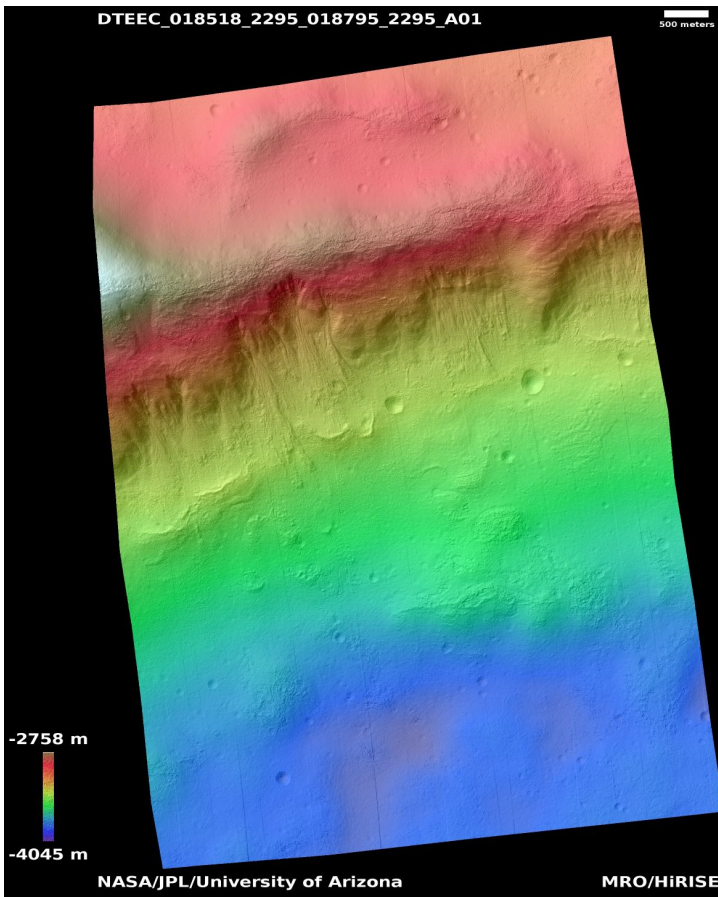
For more details about this DTM, visit:

https://www.uahirise.org/dtm/ESP_042996_2210



Gullies

DTEEC_018518_2295_018795_2295_A01



Latitude: 49.0 **Longitude:** 304.0

DTM Producer: UA | RAY OLGUIN

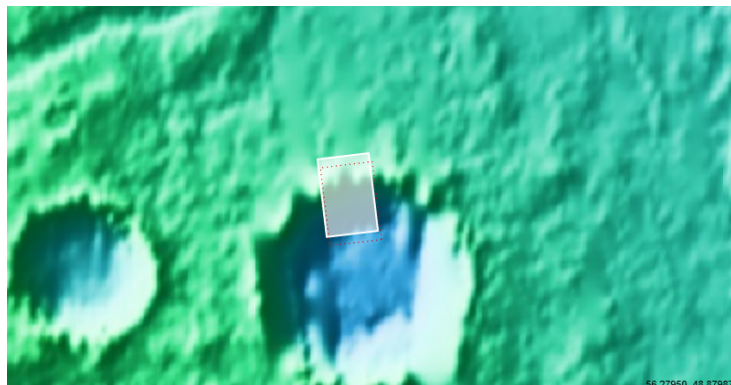
Stereo Pair:

ESP_018795_2295

ESP_018518_2295

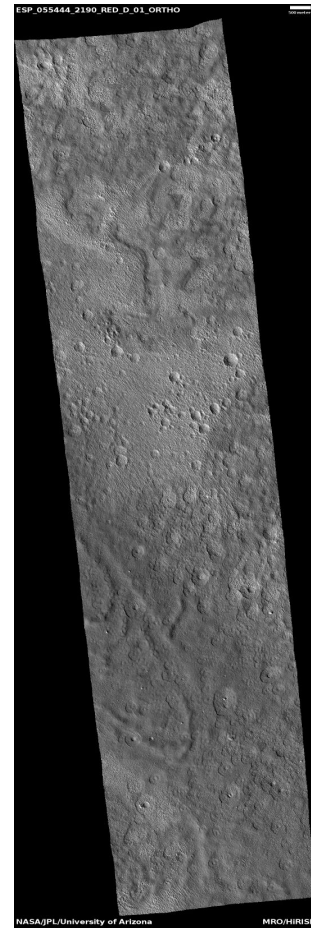
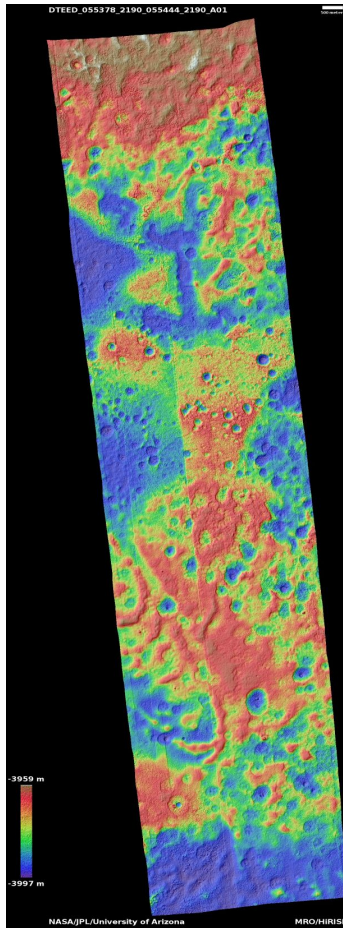
For more details about this DTM, visit:

https://www.uahirise.org/dtm/ESP_018518_2295



Expanded secondaries on possible glacial unit

DTEED_055378_2190_055444_2190_A01



Latitude: 38.9 **Longitude:** 193.6

DTM Producer: UA | BELLAMY BLAYNE FAUNCE

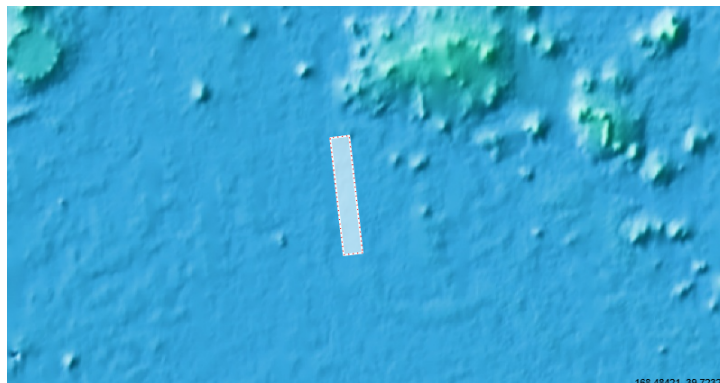
Stereo Pair:

ESP_055444_2190

ESP_055378_2190

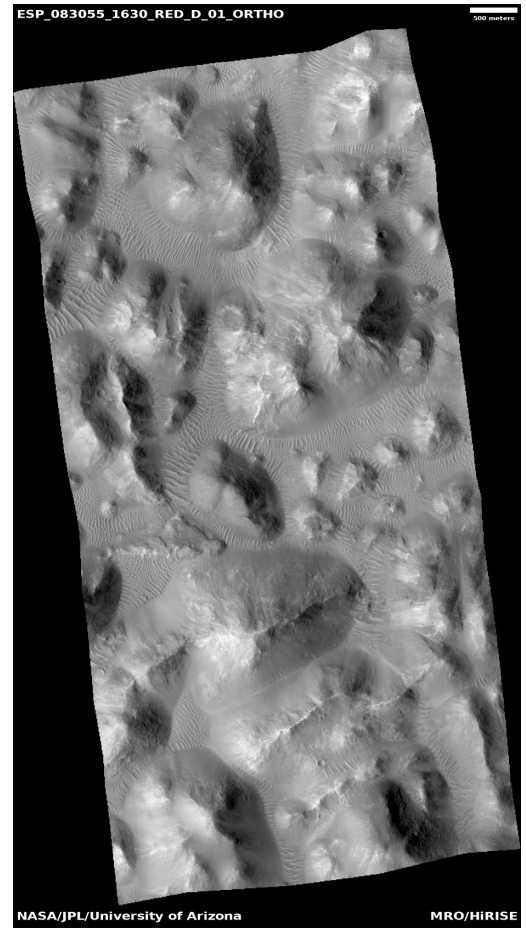
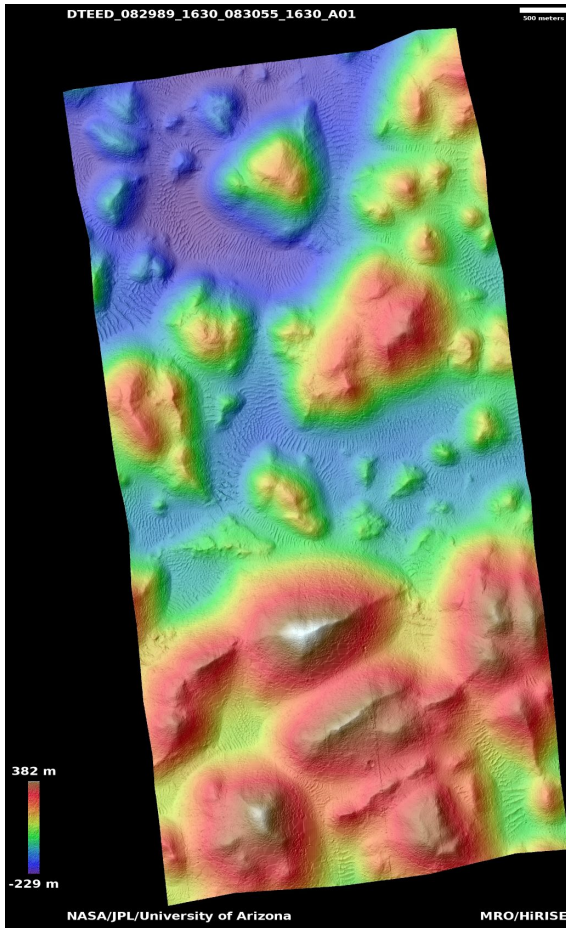
For more details about this DTM, visit:

https://www.uahirise.org/dtm/ESP_055378_2190



Chaos terrain near source of Osuga Valles

DTEED_082989_1630_083055_1630_A01



Latitude: -16.9 **Longitude:** 319.5

DTM Producer: UA | RAY OLGUIN

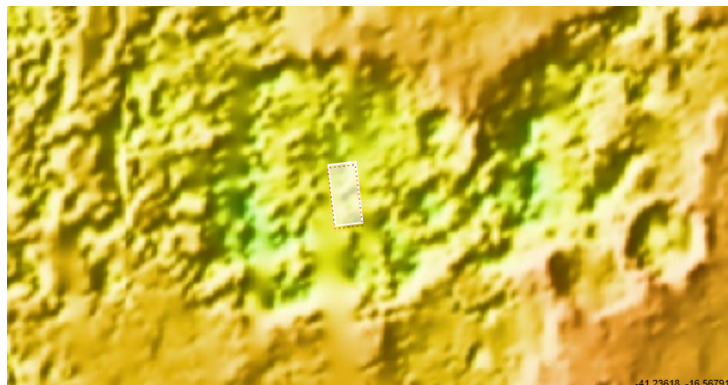
Stereo Pair:

ESP_082989_1630

ESP_083055_1630

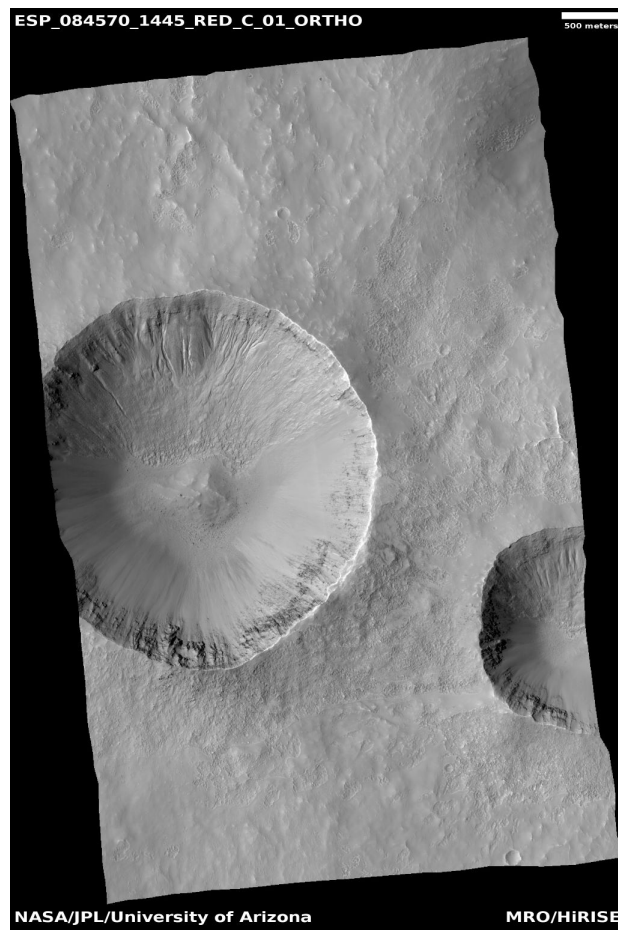
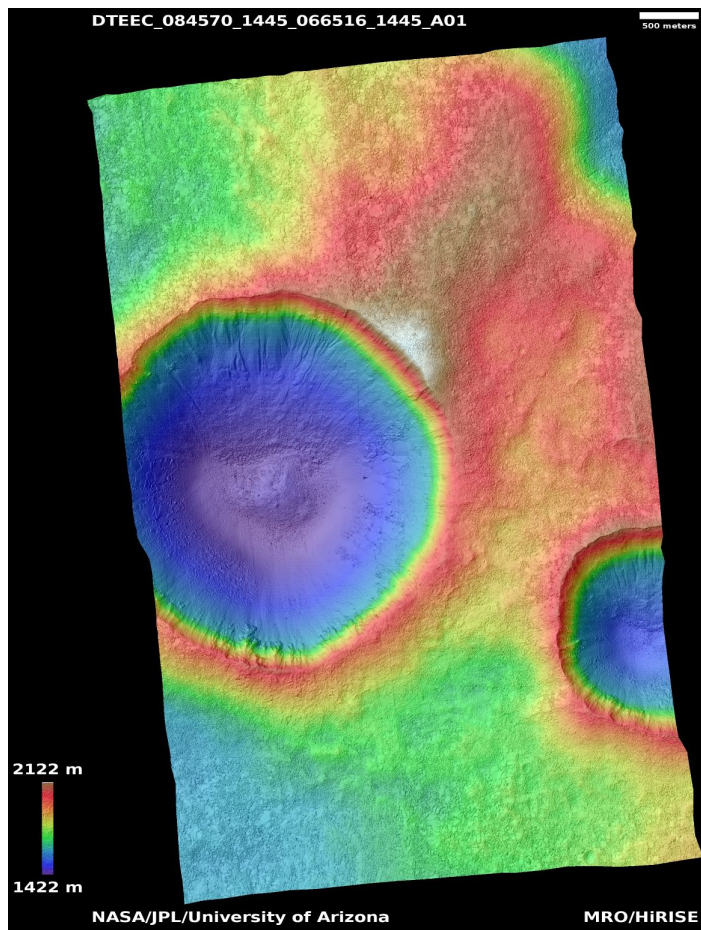
For more details about this DTM, visit:

https://www.uahirise.org/dtm/ESP_082989_1630



Gully monitoring

DTEEC_084570_1445_066516_1445_A01



Latitude: -35.1 **Longitude:** 352.5

DTM Producer: UA | RAY OLGUIN

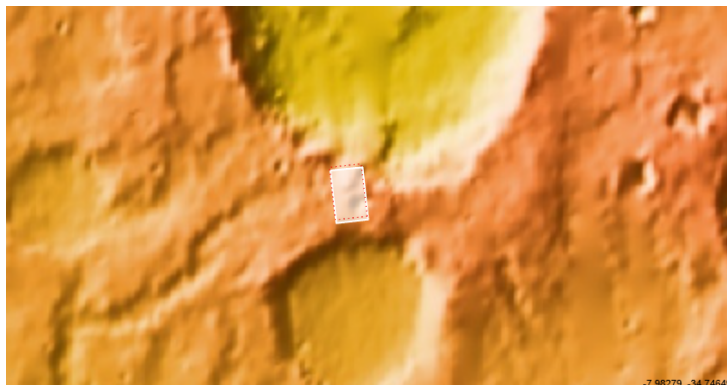
Stereo Pair:

ESP_084570_1445

ESP_066516_1445

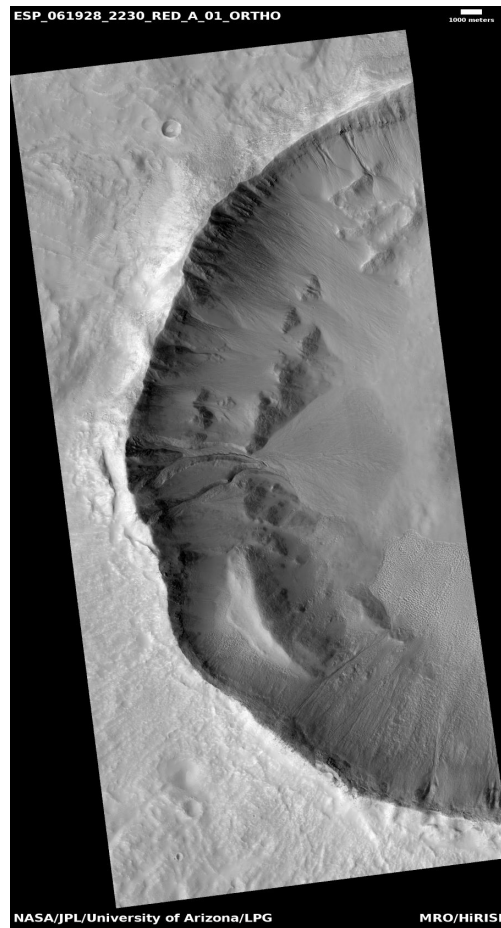
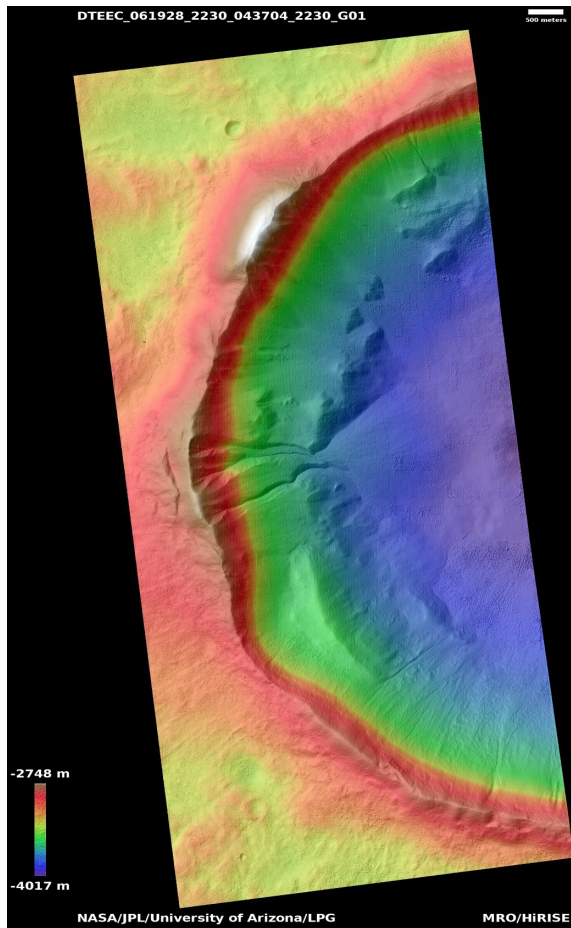
For more details about this DTM, visit:

https://www.uahirise.org/dtm/ESP_084570_1445



Gullied crater in CTX image

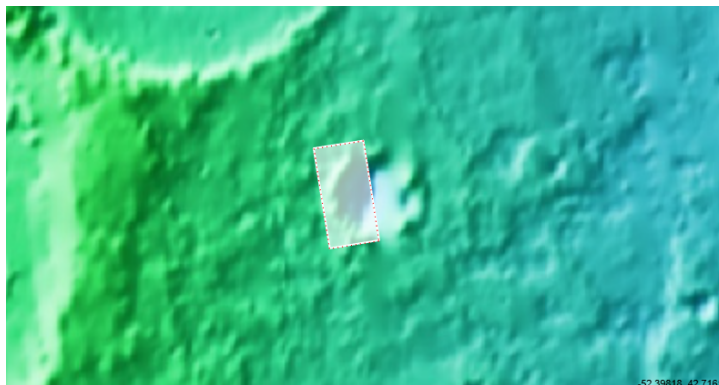
D20 035027 2251 XI 45N051W
DTEEC_061928_2230_043704_2230_G01



Latitude: 42.5 **Longitude:** 308.8
DTM Producer: LPG | AXEL NOBLET
Stereo Pair:

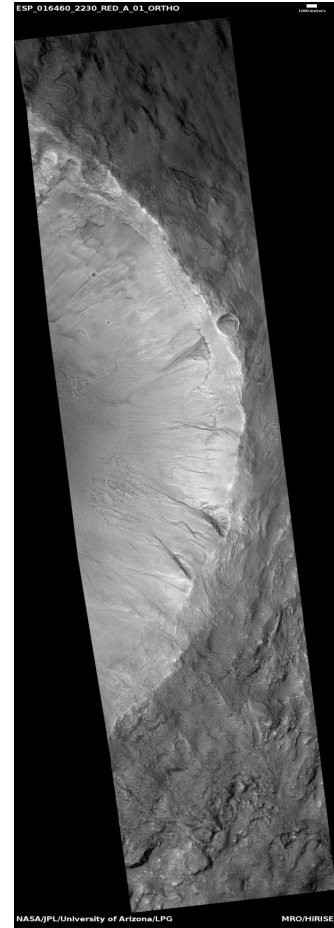
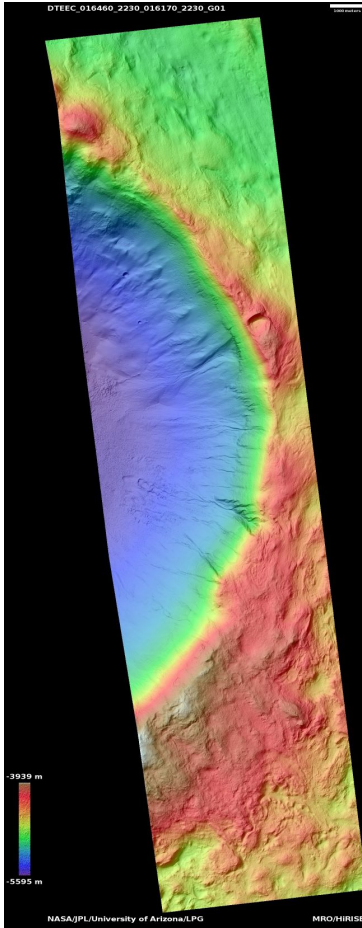
ESP_043704_2230
ESP_061928_2230

For more details about this DTM, visit:
https://www.uahirise.org/dtm/ESP_061928_2230



Gullied slope of 20-kilometer diameter impact crater in Acidalia Planitia

DTEEC_016460_2230_016170_2230_G01



Latitude: 42.6 **Longitude:** 329.0

DTM Producer: LPG | AXEL NOBLET

Stereo Pair:

ESP_016170_2230

ESP_016460_2230

For more details about this DTM, visit:

https://www.uahirise.org/dtm/ESP_016460_2230

