



## HIGH RESOLUTION IMAGING SCIENCE EXPERIMENT



# DTM PDS RELEASES

*October 2023*

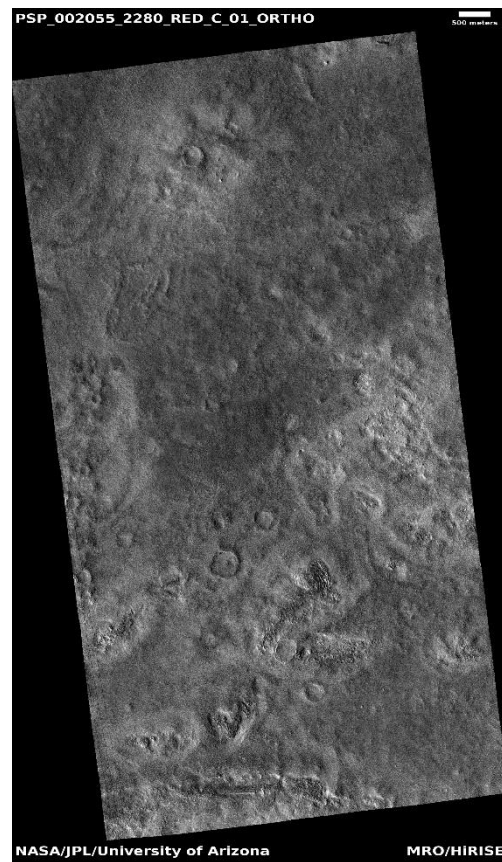
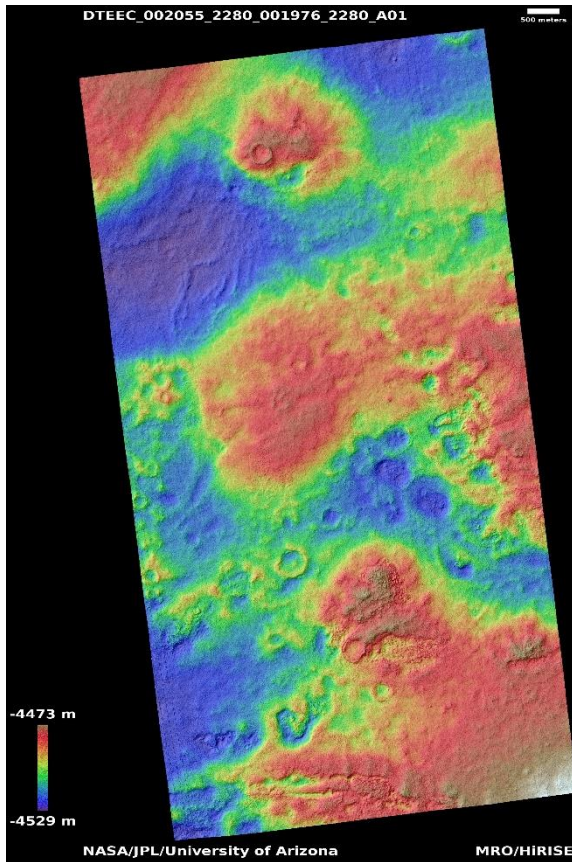
Edited by Kris Akers | UA

### DTMs Included this Month

Possible location for Viking Lander 2.....	1
Inclined layers on crater floor.....	2
Alluvial fans in crater.....	3
Smectite deposits in northwest Hellas region.....	4
Unit morphology in Syrtis Major region.....	5
Arabia Terra dune ripple monitoring.....	6
Pitted northern plains.....	7
Faulted plains in Tempe Terra.....	8
Pole-facing gullies in 7-km crater within Bond Crater.....	9
Sublimation process and spider evolution.....	10

# Possible location for Viking Lander 2

DTEEC\_002055\_2280\_001976\_2280\_A01



47.7°N 134.3°E

DTM Producer: UA | Kris Akers

Stereo Pair:

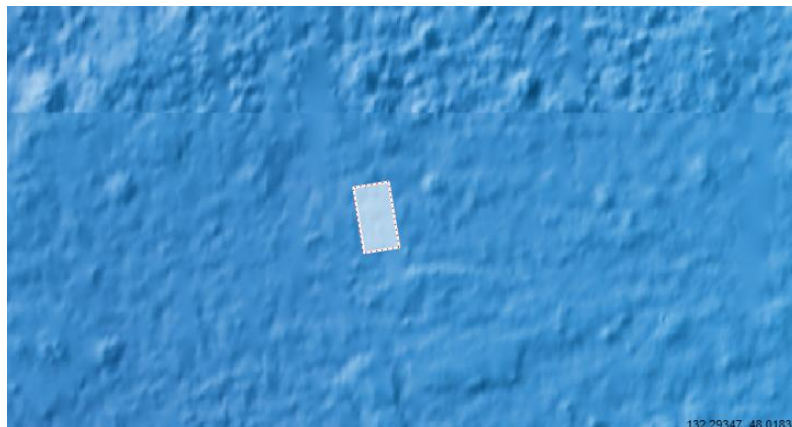
PSP\_002055\_2280

PSP\_001976\_2280

For more details about this DTM, visit:

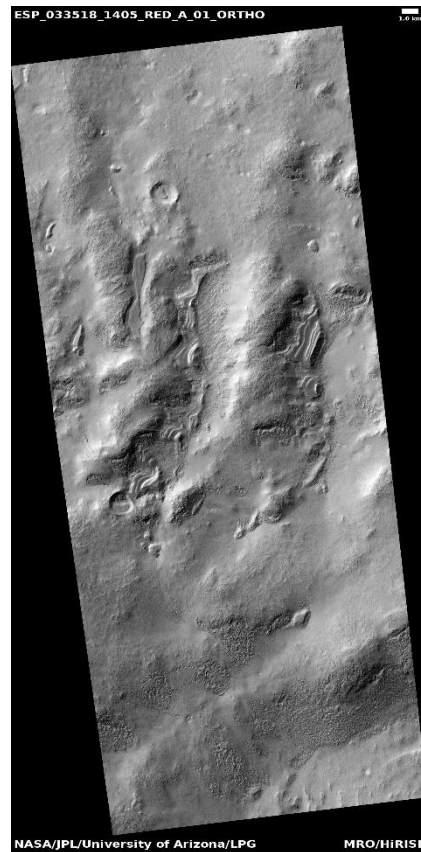
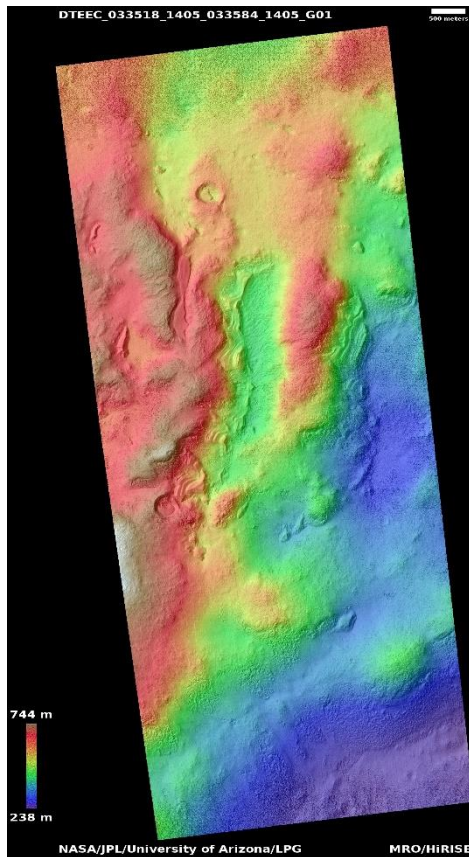
[https://www.uahirise.org/dtm/dtm.php?](https://www.uahirise.org/dtm/dtm.php?ID=PSP_002055_2280)

[ID=PSP\\_002055\\_2280](https://www.uahirise.org/dtm/dtm.php?ID=PSP_002055_2280)



# Inclined layers on crater floor

DTEEC\_033518\_1405\_033584\_1405\_G01



39.3°S 117.5°E

DTM Producer: LPG | Axel Noblet

Stereo Pair:

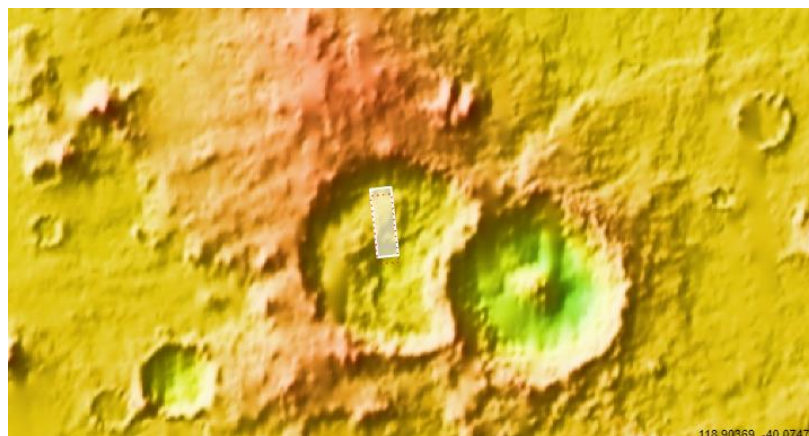
ESP\_033518\_1405

ESP\_033584\_1405

For more details about this DTM, visit:

[https://www.uahirise.org/dtm/dtm.php?](https://www.uahirise.org/dtm/dtm.php?ID=ESP_033518_1405)

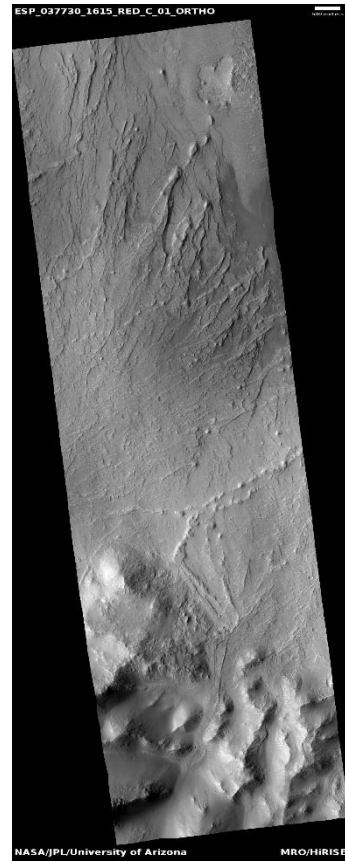
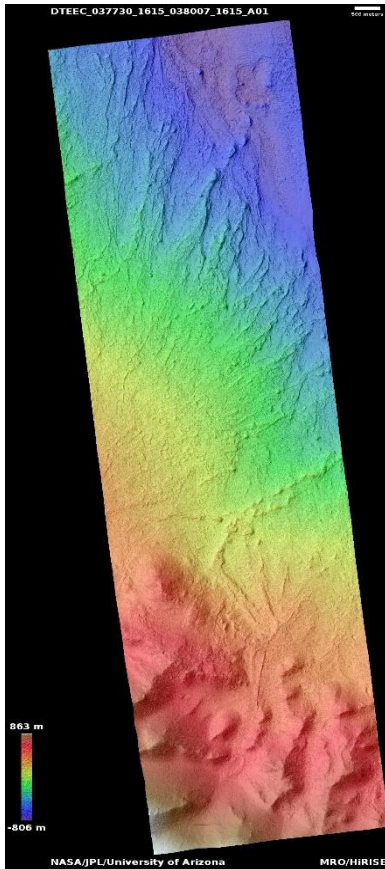
[ID=ESP\\_033518\\_1405](https://www.uahirise.org/dtm/dtm.php?ID=ESP_033518_1405)





# Alluvial fans in crater

DTEEC\_037730\_1615\_038007\_1615\_A01



18.4°S 322.9°E

DTM Producer: UA | Kris Akers

Stereo Pair:

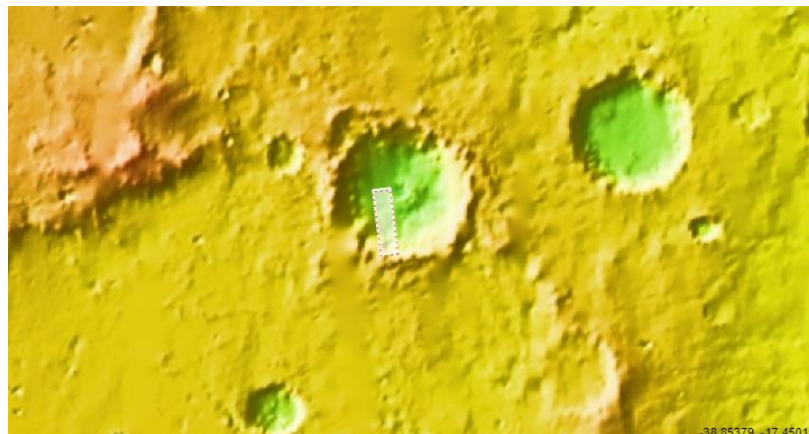
ESP\_037730\_1615

ESP\_038007\_1615

For more details about this DTM, visit:

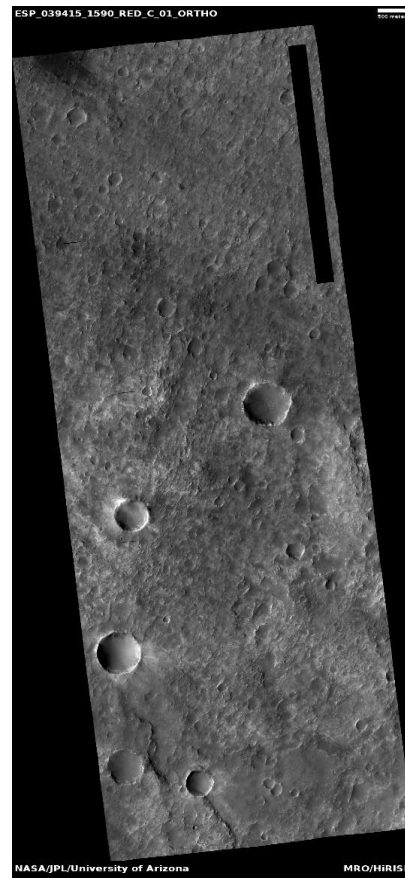
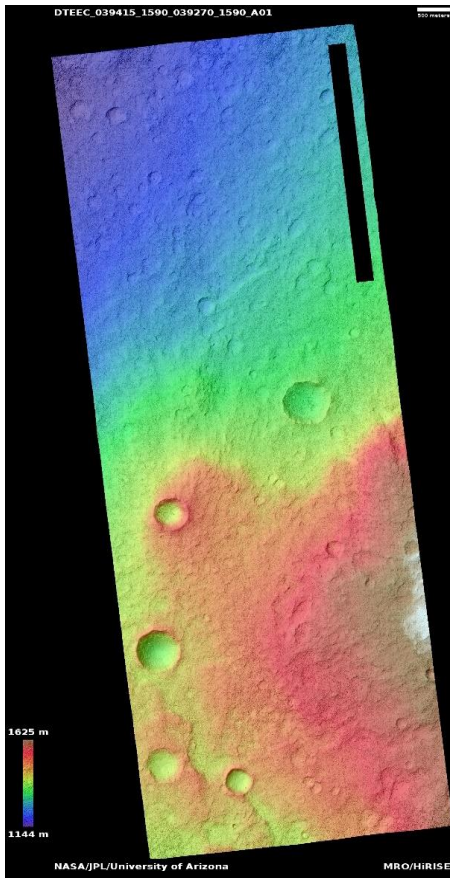
[https://www.uahirise.org/dtm/dtm.php?](https://www.uahirise.org/dtm/dtm.php?ID=ESP_037730_1615)

[ID=ESP\\_037730\\_1615](https://www.uahirise.org/dtm/dtm.php?ID=ESP_037730_1615)



# Smectite deposits in northwest Hellas region

DTEEC\_039415\_1590\_039270\_1590\_A01



20.9°S 53.5°E

DTM Producer: UA | Kris Akers

Stereo Pair:

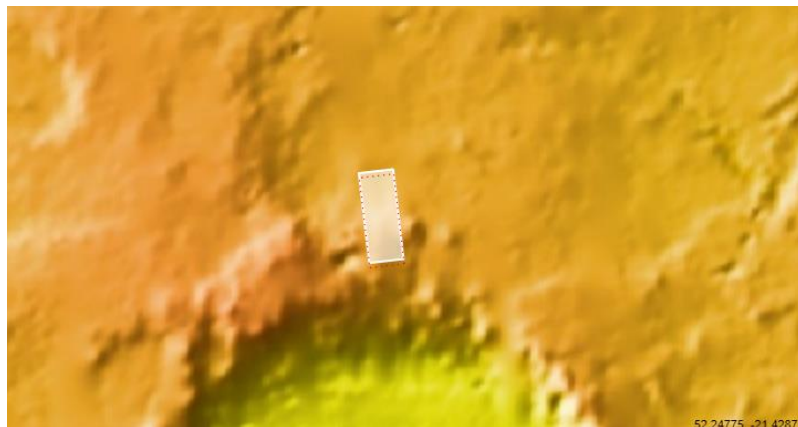
ESP\_039415\_1590

ESP\_039270\_1590

For more details about this DTM, visit:

[https://www.uahirise.org/dtm/dtm.php?](https://www.uahirise.org/dtm/dtm.php?ID=ESP_039415_1590)

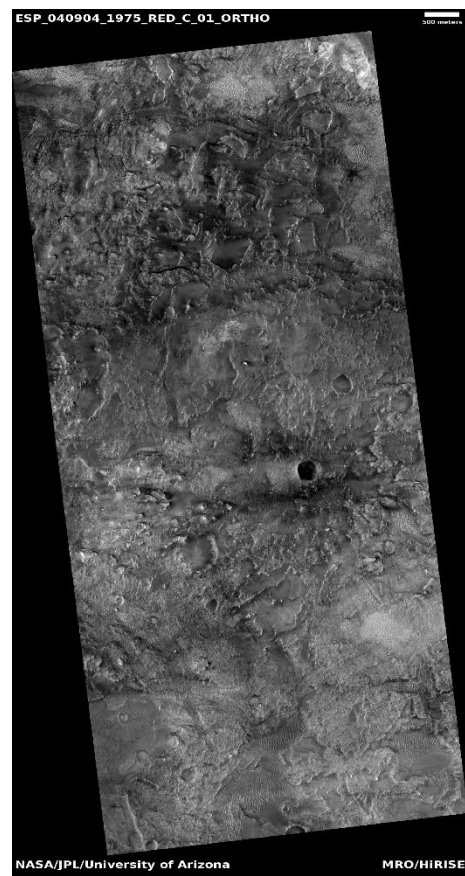
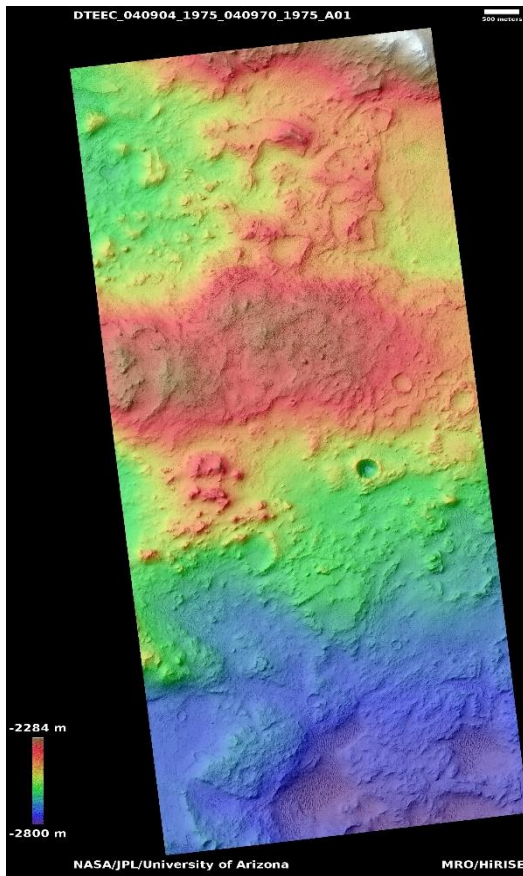
[ID=ESP\\_039415\\_1590](https://www.uahirise.org/dtm/dtm.php?ID=ESP_039415_1590)





# Unit morphology in Syrtis Major region

DTEEC\_040904\_1975\_040970\_1975\_A01



17.3°N 77.2°E

DTM Producer: UA | Maximus X Cabrera

Stereo Pair:

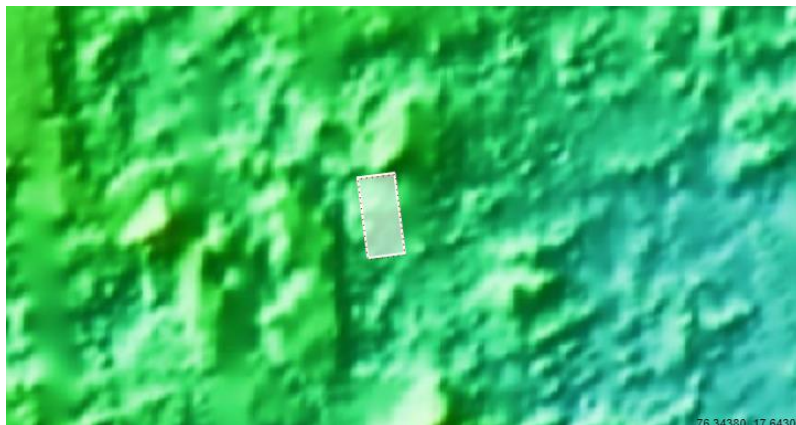
ESP\_040904\_1975

ESP\_040970\_1975

For more details about this DTM, visit:

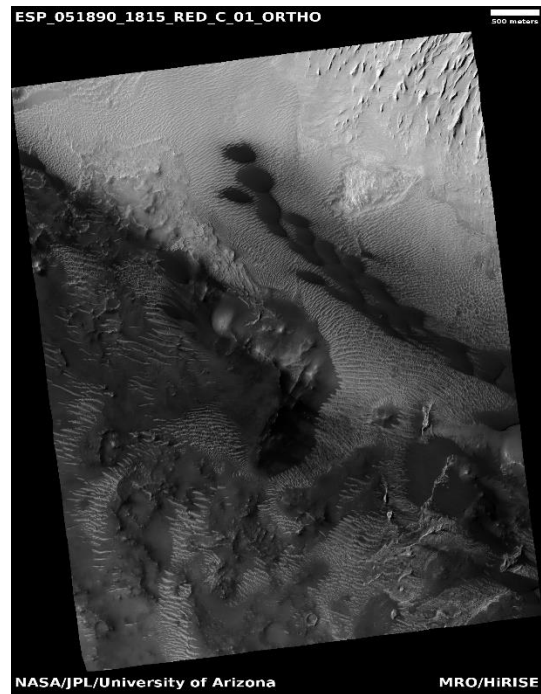
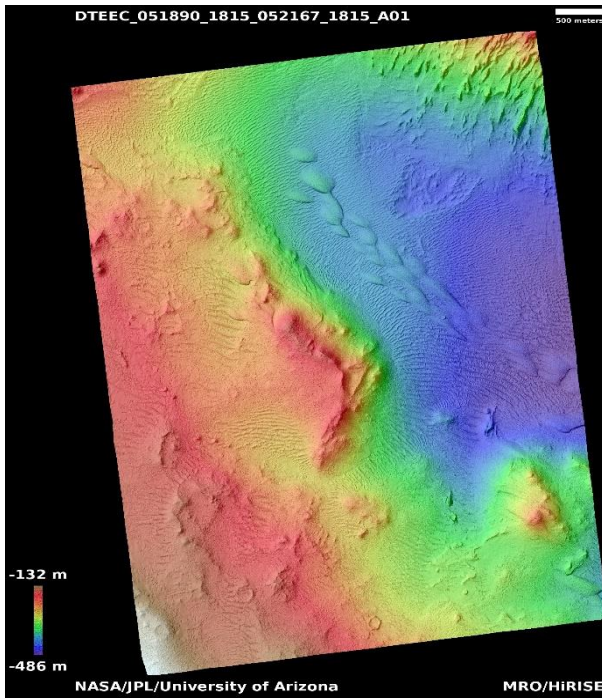
[https://www.uahirise.org/dtm/dtm.php?](https://www.uahirise.org/dtm/dtm.php?ID=ESP_040904_1975)

[ID=ESP\\_040904\\_1975](https://www.uahirise.org/dtm/dtm.php?ID=ESP_040904_1975)



# Arabia Terra dune ripple monitoring

DTEEC\_051890\_1815\_052167\_1815\_A01



1.4°N 26.2°E

DTM Producer: UA | Kris Akers

Stereo Pair:

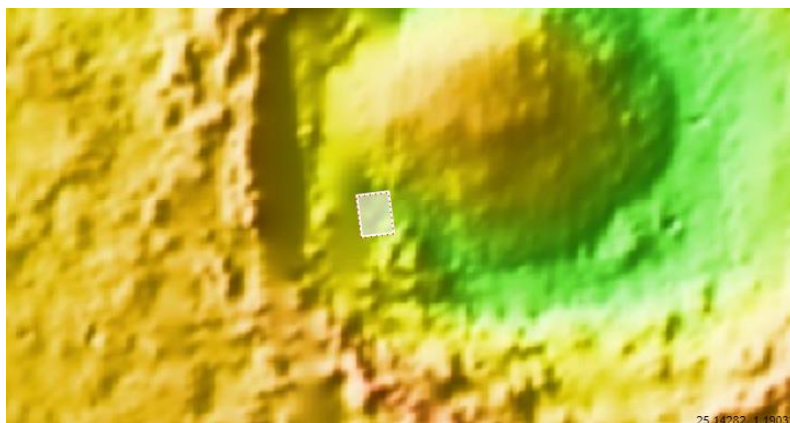
ESP\_051890\_1815

ESP\_052167\_1815

Orthos:

ESP\_079136\_1815

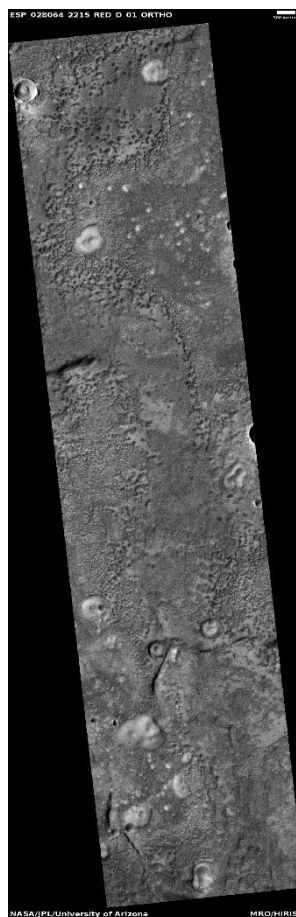
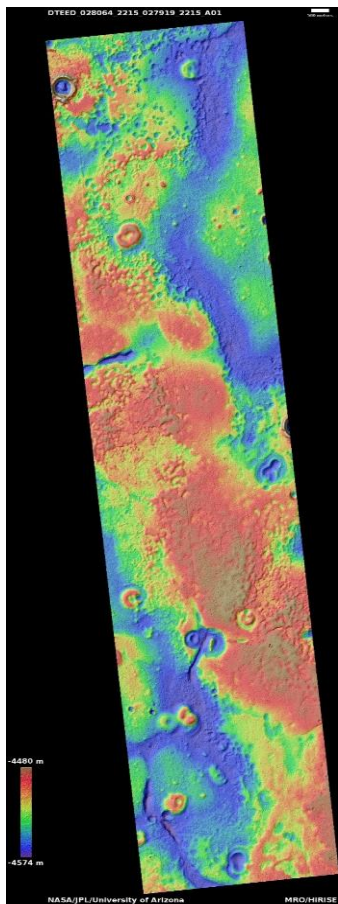
For more details about this DTM, visit:  
[https://www.uahirise.org/dtm/dtm.php?ID=ESP\\_051890\\_1815](https://www.uahirise.org/dtm/dtm.php?ID=ESP_051890_1815)





# Pitted northern plains

DTEED\_028064\_2215\_027919\_2215\_A01



41.1°N 332.3°E

DTM Producer: UA | Kris Akers

Stereo Pair:

ESP\_028064\_2215

ESP\_027919\_2215

For more details about this DTM, visit:

[https://www.uahirise.org/dtm/dtm.php?](https://www.uahirise.org/dtm/dtm.php?ID=ESP_028064_2215)

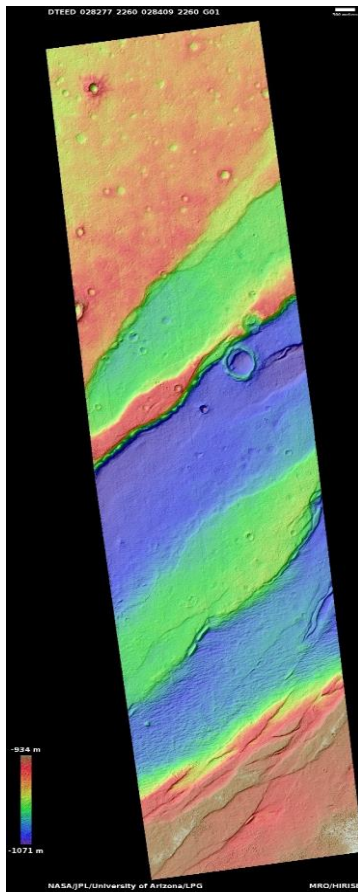
[ID=ESP\\_028064\\_2215](https://www.uahirise.org/dtm/dtm.php?ID=ESP_028064_2215)





# Faulted plains in Tempe Terra

DTEED\_028277\_2260\_028409\_2260\_G01



45.6°N 275.2°E

DTM Producer: LPG | Axel Noblet

Stereo Pair:

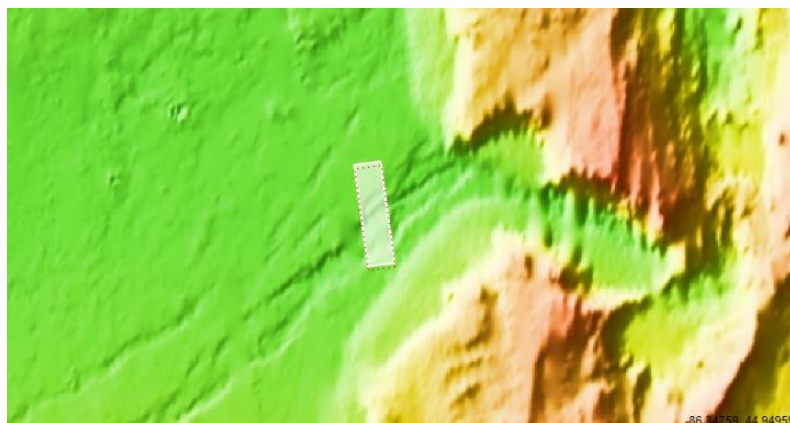
ESP\_028277\_2260

ESP\_028409\_2260

For more details about this DTM, visit:

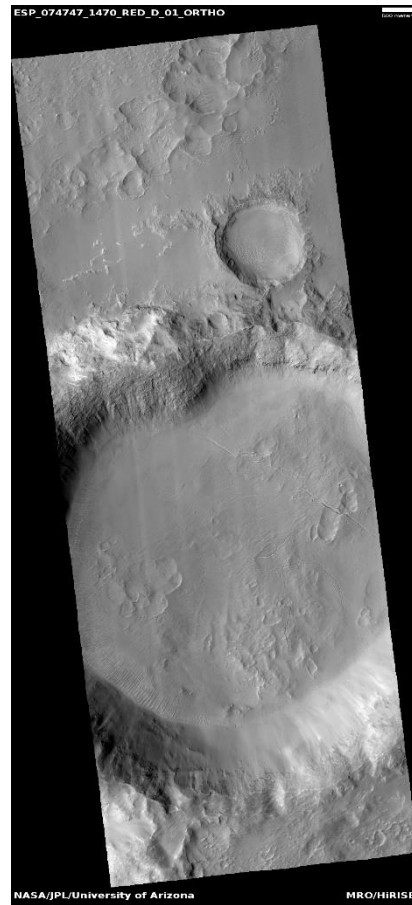
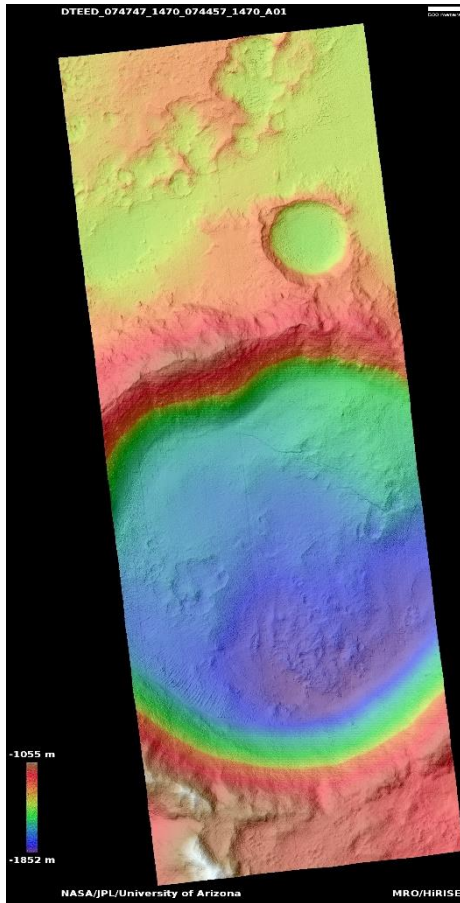
[https://www.uahirise.org/dtm/dtm.php?](https://www.uahirise.org/dtm/dtm.php?ID=ESP_028277_2260)

[ID=ESP\\_028277\\_2260](https://www.uahirise.org/dtm/dtm.php?ID=ESP_028277_2260)



# Pole-facing gullies in 7-km crater within Bond Crater

DTEED\_074747\_1470\_074457\_1470\_A01



32.8°S 323.9°E

DTM Producer: UA | Kris Akers

Stereo Pair:

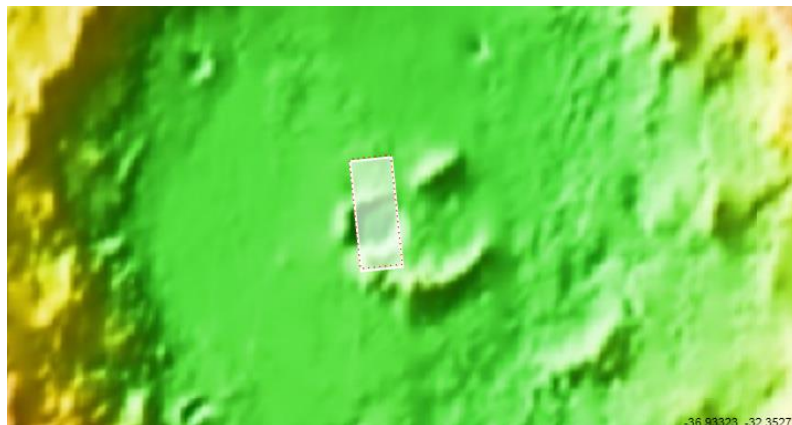
ESP\_074747\_1470

ESP\_074457\_1470

For more details about this DTM, visit:

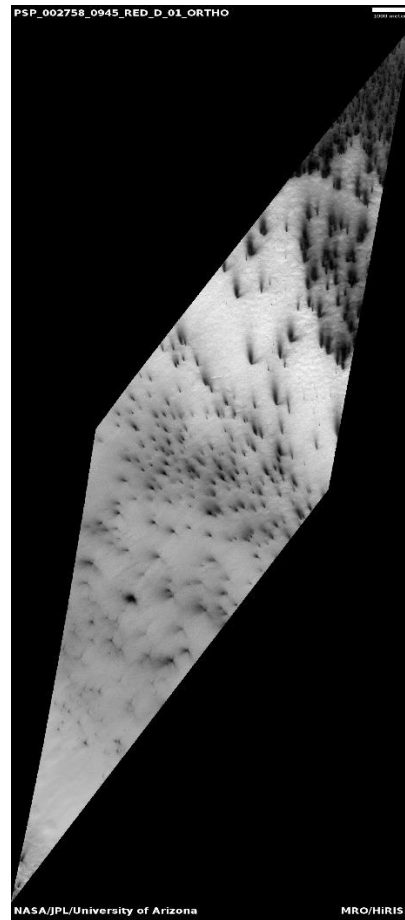
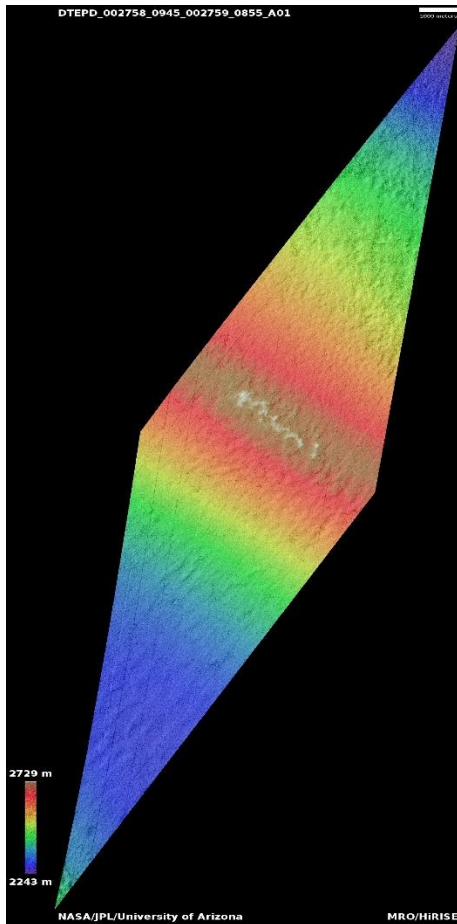
<https://www.uahirise.org/dtm/dtm.php?>

[ID=ESP\\_074747\\_1470](https://www.uahirise.org/dtm/dtm.php?ID=ESP_074747_1470)



# Sublimation process and spider evolution

DTEPD\_002758\_0945\_002759\_0855\_A01



85.4°S 104.3°E

DTM Producer: UA | Kris Akers

Stereo Pair:

PSP\_002758\_0945

PSP\_002759\_0855

For more details about this DTM, visit:

[https://www.uahirise.org/dtm/dtm.php?](https://www.uahirise.org/dtm/dtm.php?ID=PSP_002758_0945)

[ID=PSP\\_002758\\_0945](https://www.uahirise.org/dtm/dtm.php?ID=PSP_002758_0945)

