



HIGH RESOLUTION IMAGING SCIENCE EXPERIMENT



DTM PDS RELEASES

October 2022

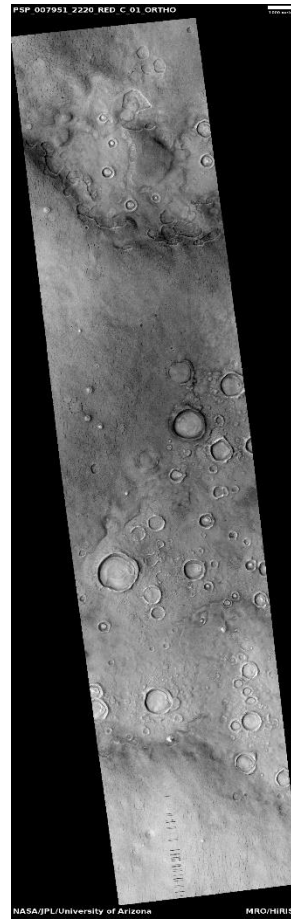
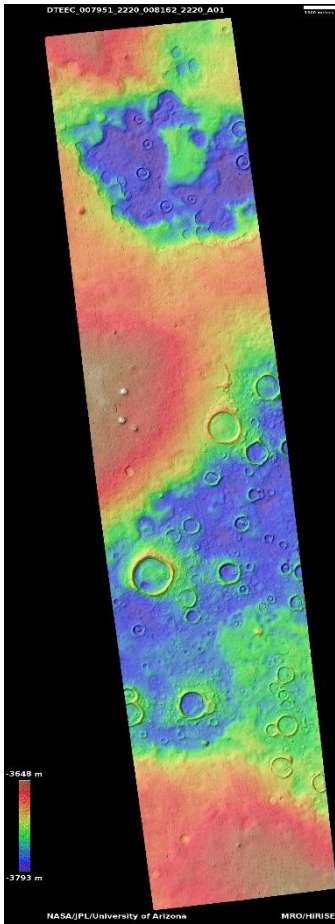
Edited by Kris Akers | UA

DTMs Included this Month

Diverse features in Utopia region.....	1
Interesting periglacial assemblage in Utopia Planitia.....	2
Light-toned outcrops in Iani Chaos.....	3
Lava channel and cataract in south-central Elysium Planitia.....	4
Central structure and layering of a large impact crater.....	5
Layered light-toned crater-filling material in northwest Hellas region.....	6
Small volcano in wind streak southwest of Tombaugh Crater.....	7
Smooth region in Phlegra Montes.....	8
Banded features in Hellas region as seen in CTX image P20_008769_1360.....	9
Exposed layers in Medusae Fossae Formation.....	10
Positive-relief feature on south polar layered deposits.....	11

Diverse features in Utopia region

DTEEC_007951_2220_008162_2220_A01



41.6°N 82.9°E

DTM Producer: UA | Kris Akers

Stereo Pair:

PSP_007951_2220

PSP_008162_2220

For more details about this DTM, visit:

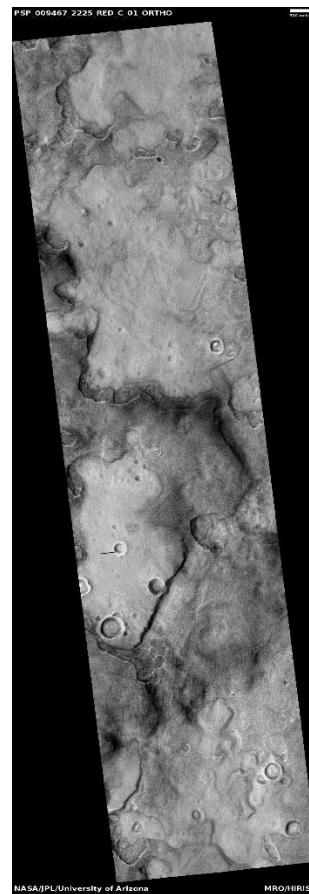
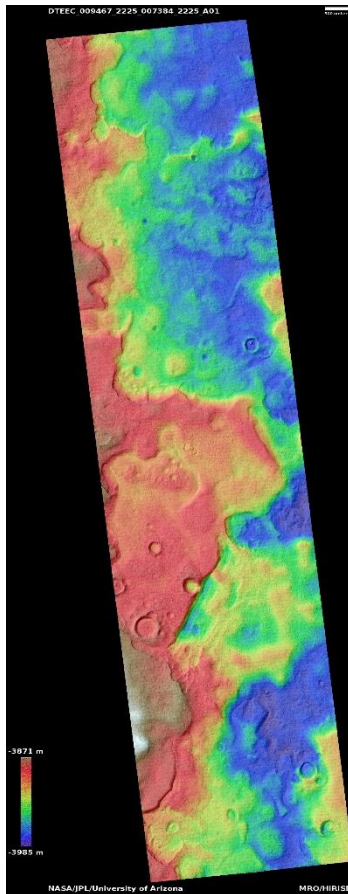
[https://www.uahirise.org/dtm/dtm.php?](https://www.uahirise.org/dtm/dtm.php?ID=PSP_007951_2220)

[ID=PSP_007951_2220](https://www.uahirise.org/dtm/dtm.php?ID=PSP_007951_2220)



Interesting periglacial assemblage in Utopia Planitia

DTEEC_009467_2225_007384_2225_A01



42.3°N 86.3°E

DTM Producer: UA | Maximus X Cabrera

Stereo Pair:

PSP_009467_2225

PSP_007384_2225

For more details about this DTM, visit:

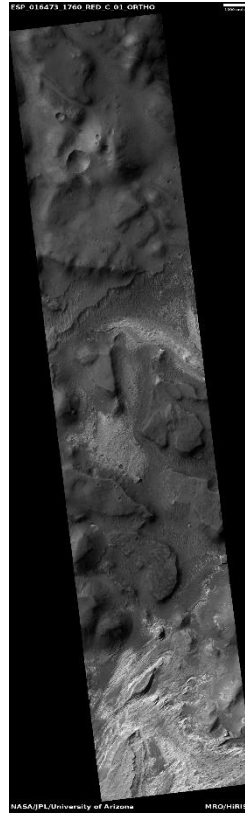
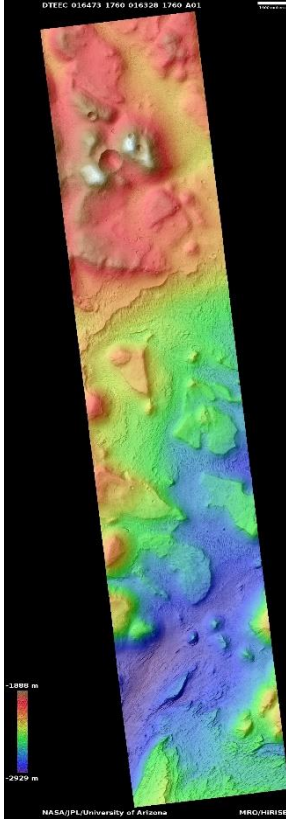
[https://www.uahirise.org/dtm/dtm.php?](https://www.uahirise.org/dtm/dtm.php?ID=PSP_009467_2225)

[ID=PSP_009467_2225](https://www.uahirise.org/dtm/dtm.php?ID=PSP_009467_2225)



Light-toned outcrops in Iani Chaos

DTEEC_016473_1760_016328_1760_A01



3.8°S 341.4°E

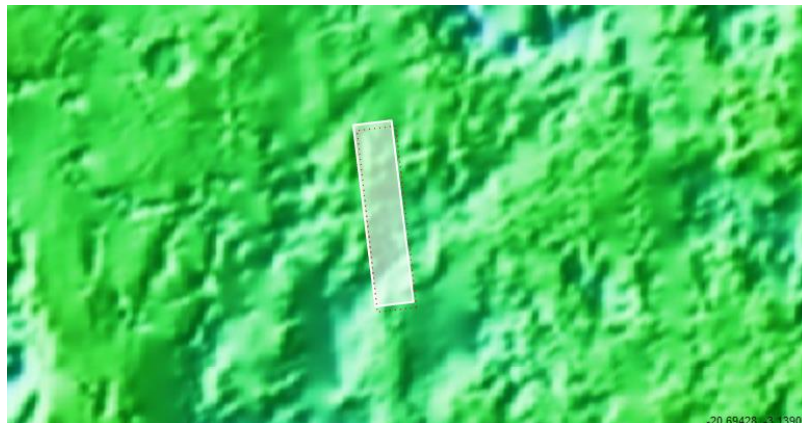
DTM Producer: UA | Maximus X Cabrera

Stereo Pair:

ESP_016473_1760

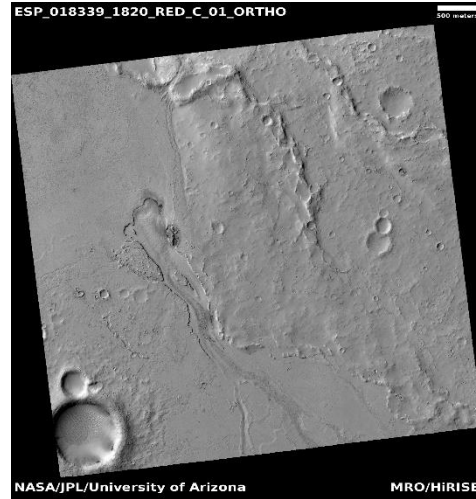
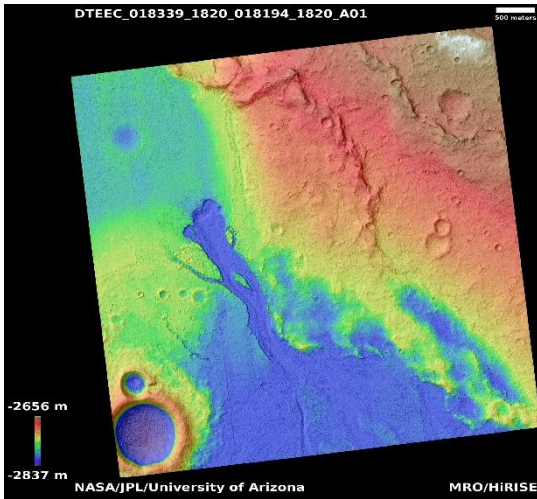
ESP_016328_1760

For more details about this DTM, visit:
https://www.uahirise.org/dtm/dtm.php?ID=ESP_016473_1760



Lava channel and cataract in south-central Elysium Planitia

DTEEC_018339_1820_018194_1820_A01



2.1°N 157.4°E

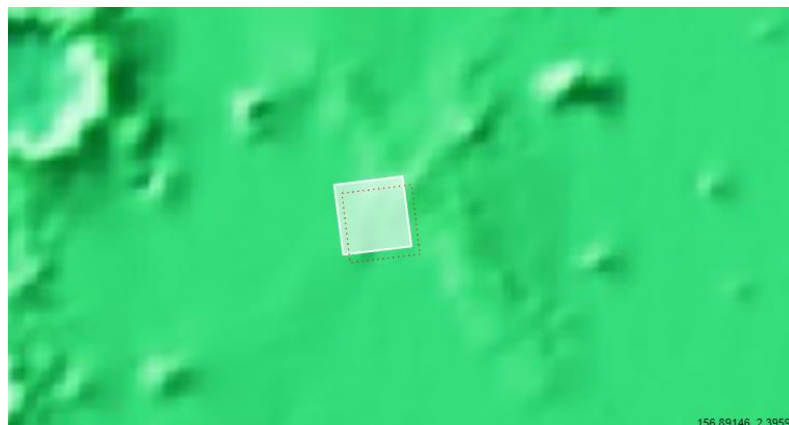
DTM Producer: UA | Kris Akers

Stereo Pair:

ESP_018339_1820

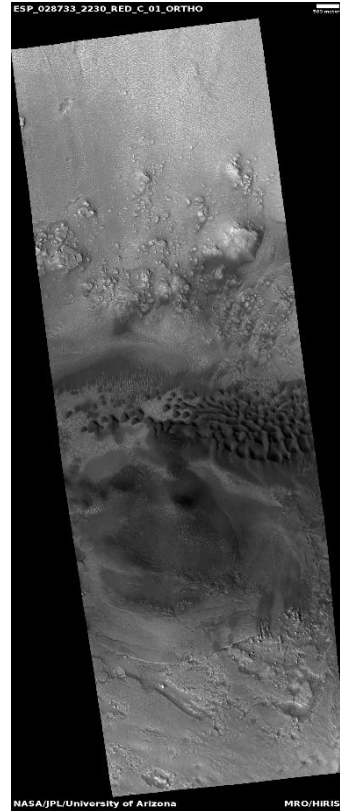
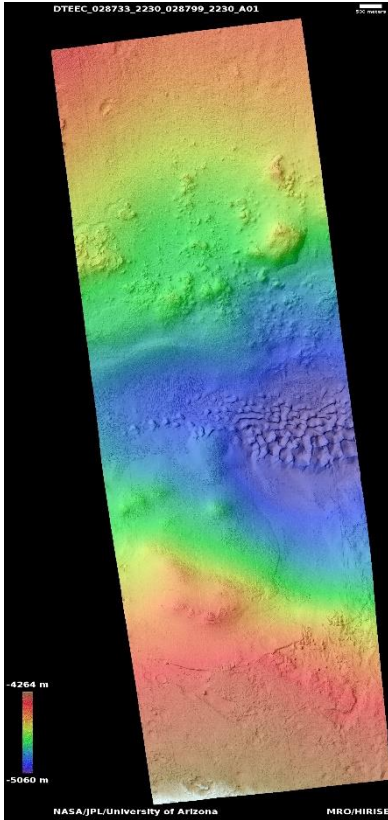
ESP_018194_1820

For more details about this DTM, visit:
https://www.uahirise.org/dtm/dtm.php?ID=ESP_018339_1820



Central structure and layering of a large impact crater

DTEEC_028733_2230_028799_2230_A01



42.6°N 67.2°E

DTM Producer: UA | Kris Akers

Stereo Pair:

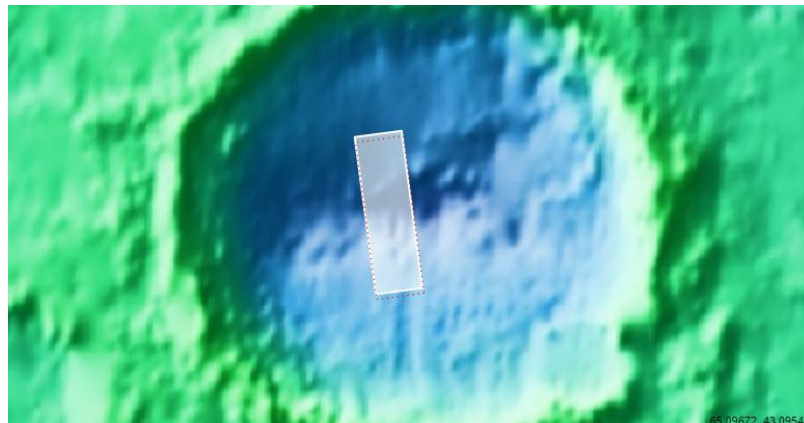
ESP_028733_2230

ESP_028799_2230

For more details about this DTM, visit:

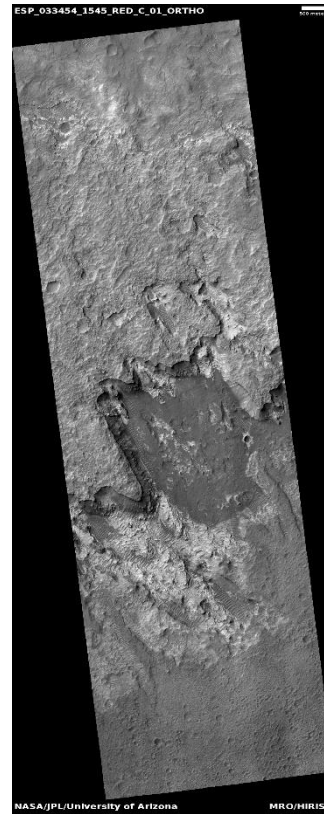
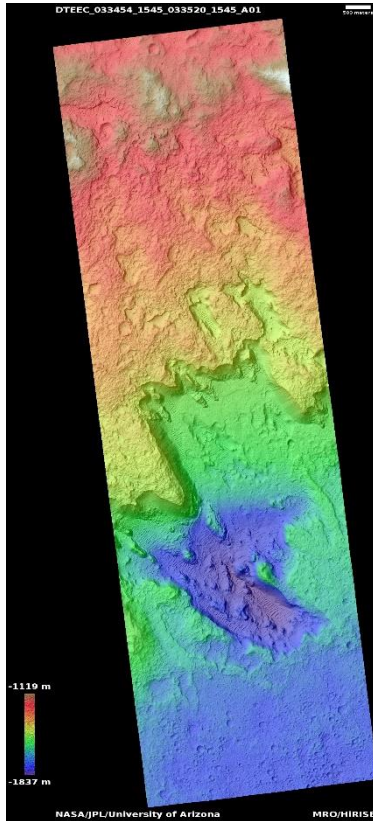
[https://www.uahirise.org/dtm/dtm.php?](https://www.uahirise.org/dtm/dtm.php?ID=ESP_028733_2230)

[ID=ESP_028733_2230](https://www.uahirise.org/dtm/dtm.php?ID=ESP_028733_2230)



Layered light-toned crater-filling material in northwest Hellas region

DTEEC_033454_1545_033520_1545_A01



25.2°S 62.0°E

DTM Producer: UA | Kris Akers

Stereo Pair:

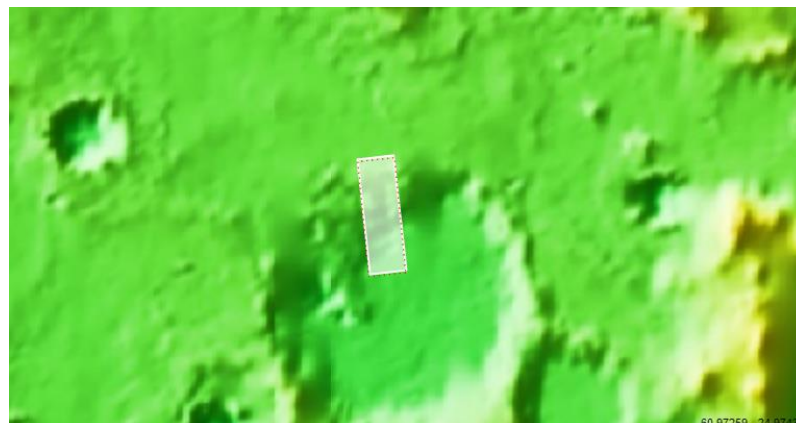
ESP_033454_1545

ESP_033520_1545

For more details about this DTM, visit:

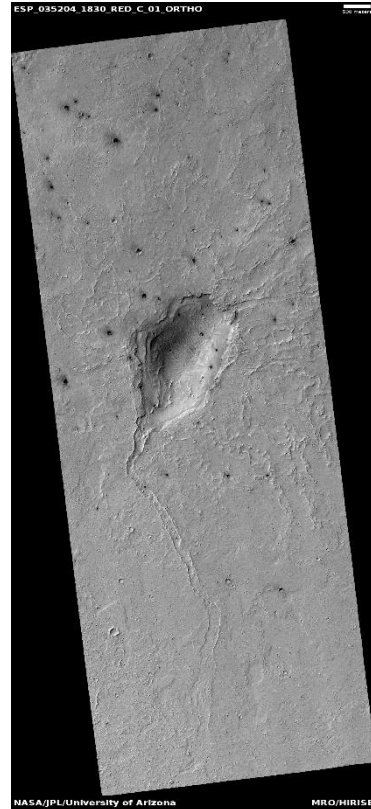
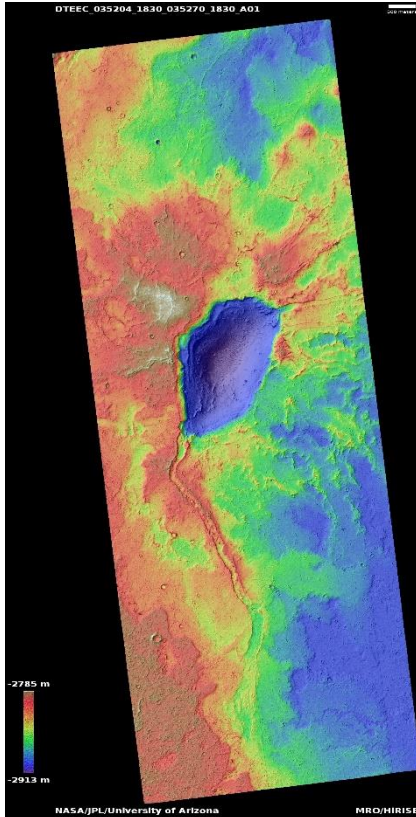
[https://www.uahirise.org/dtm/dtm.php?](https://www.uahirise.org/dtm/dtm.php?ID=ESP_033454_1545)

[ID=ESP_033454_1545](https://www.uahirise.org/dtm/dtm.php?ID=ESP_033454_1545)



Small volcano in wind streak southwest of Tombaugh Crater

DTEEC_035204_1830_035270_1830_A01



2.9°N 161.0°E

DTM Producer: UA | Kris Akers

Stereo Pair:

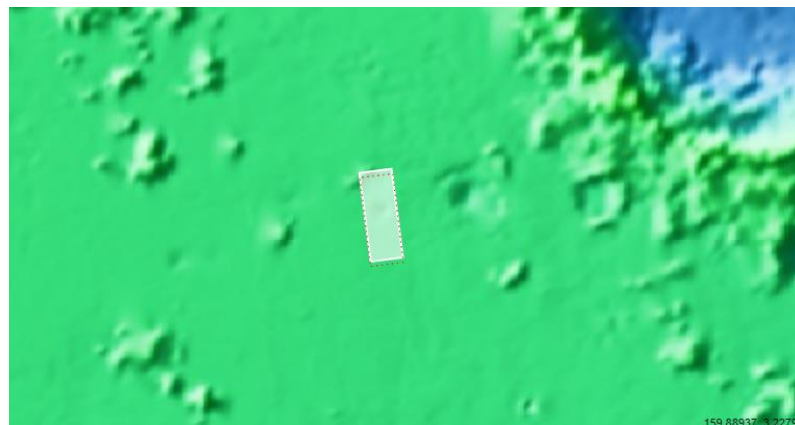
ESP_035204_1830

ESP_035270_1830

For more details about this DTM, visit:

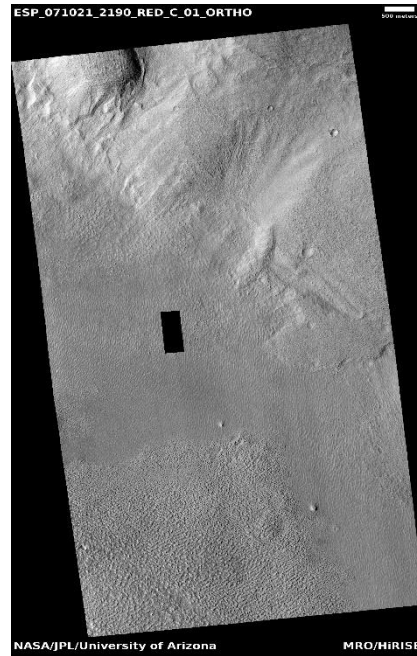
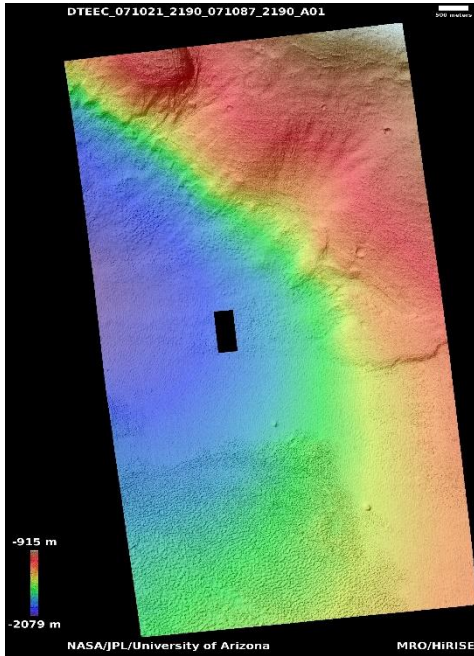
[https://www.uahirise.org/dtm/dtm.php?](https://www.uahirise.org/dtm/dtm.php?ID=ESP_035204_1830)

[ID=ESP_035204_1830](https://www.uahirise.org/dtm/dtm.php?ID=ESP_035204_1830)



Smooth region in Phlegra Montes

DTEEC_071021_2190_071087_2190_A01



38.7°N 164.2°E

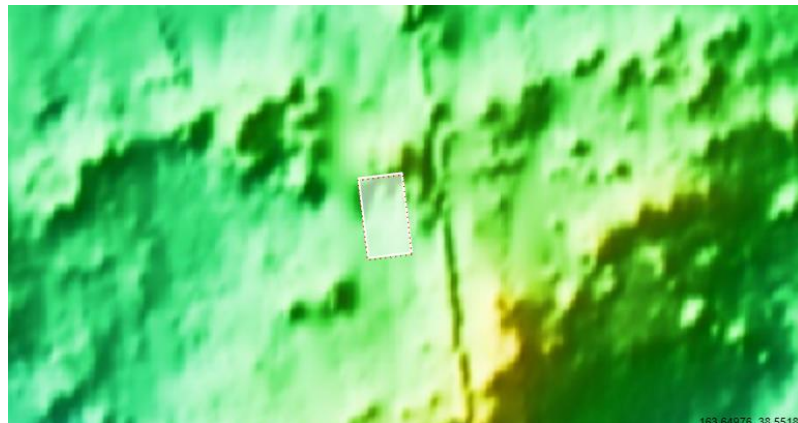
DTM Producer: UA | Kris Akers

Stereo Pair:

ESP_071021_2190

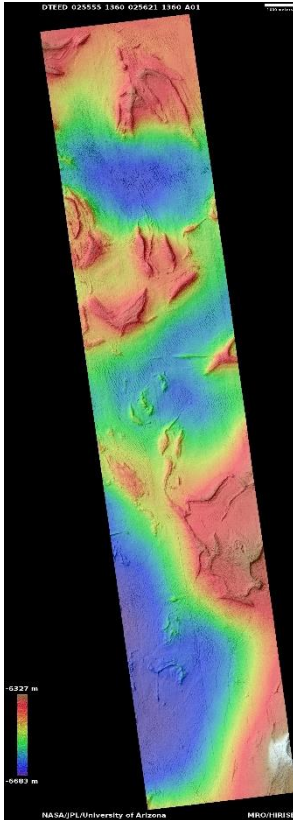
ESP_071087_2190

For more details about this DTM, visit:
https://www.uahirise.org/dtm/dtm.php?ID=ESP_071021_2190



Banded features in Hellas region as seen in CTX image P20_008769_1360

DTEED_025555_1360_025621_1360_A01



43.9°S 78.1°E

DTM Producer: UA | Maximus X Cabrera

Stereo Pair:

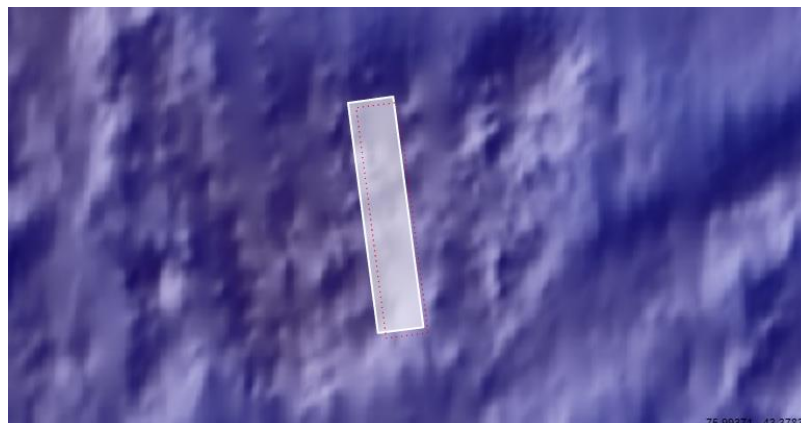
ESP_025555_1360

ESP_025621_1360

For more details about this DTM, visit:

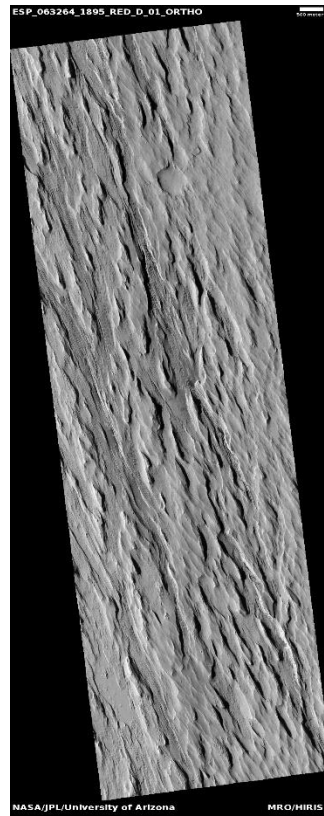
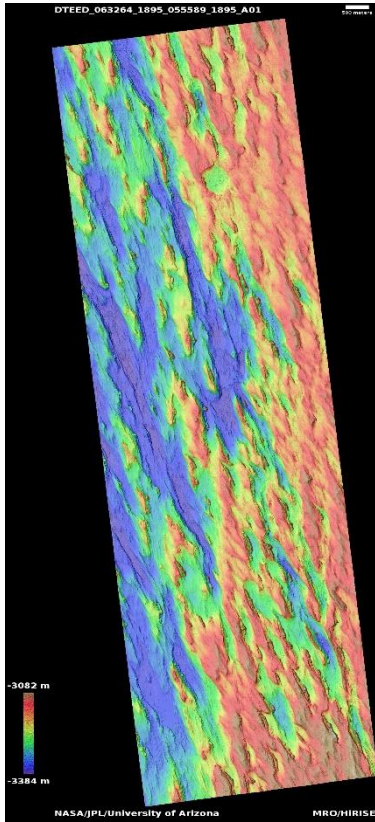
[https://www.uahirise.org/dtm/dtm.php?](https://www.uahirise.org/dtm/dtm.php?ID=ESP_025555_1360)

[ID=ESP_025555_1360](https://www.uahirise.org/dtm/dtm.php?ID=ESP_025555_1360)



Exposed layers in Medusae Fossae Formation

DTEED_063264_1895_055589_1895_A01



9.4°N 197.7°E

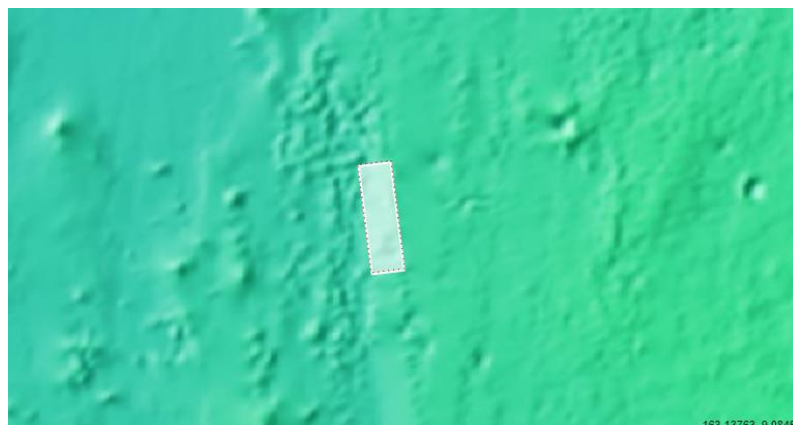
DTM Producer: UA | Kris Akers

Stereo Pair:

ESP_063264_1895

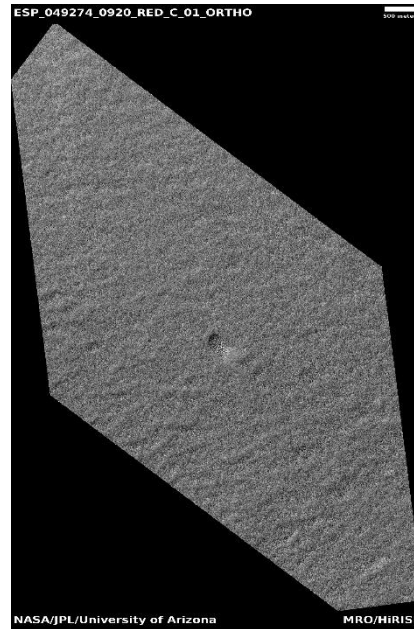
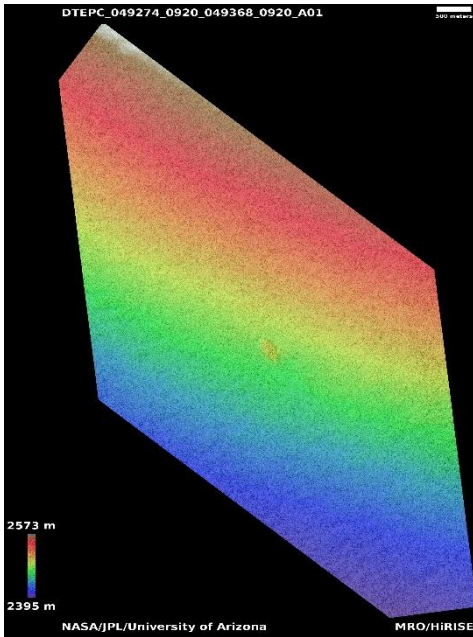
ESP_055589_1895

For more details about this DTM, visit:
https://www.uahirise.org/dtm/dtm.php?ID=ESP_063264_1895



Positive-relief feature on south polar layered deposits

DTEPC_049274_0920_049368_0920_A01



88.1°S 201.0°E

DTM Producer: UA | Maximus X Cabrera

Stereo Pair:

ESP_049274_0920

ESP_049368_0920

For more details about this DTM, visit:
https://www.uahirise.org/dtm/dtm.php?ID=ESP_049274_0920

