



HIGH RESOLUTION IMAGING SCIENCE EXPERIMENT



DTM PDS RELEASES

November 2023

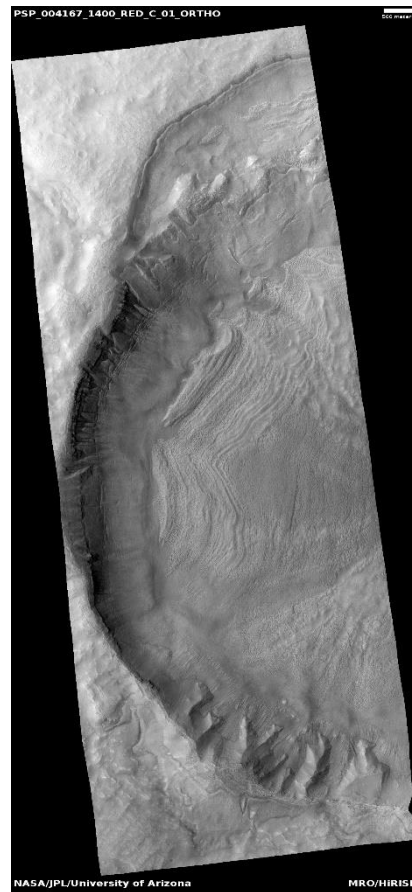
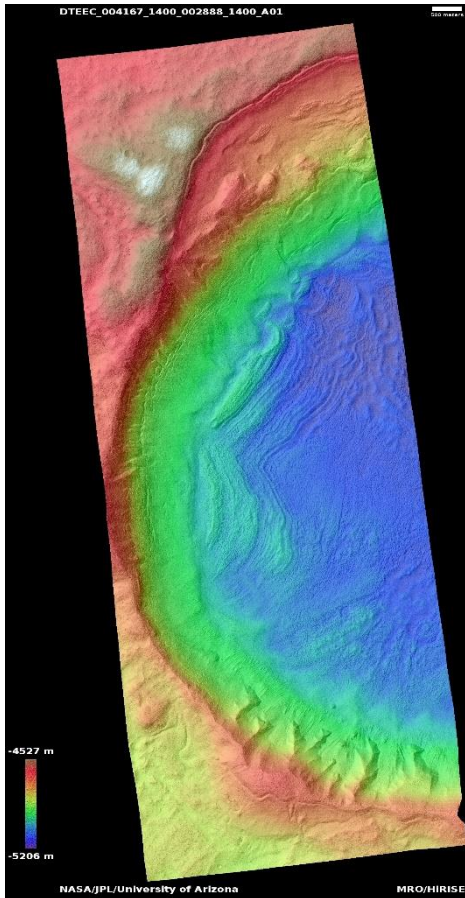
Edited by Kris Akers | UA

DTMs Included this Month

Sharp-looking gullies.....	1
Crater with multiple gully orientations.....	2
Possible phyllosilicates in bedrock-rich region of Acidalia Planitia.....	3
North polar dune forms and frost.....	4
Lyot Crater dune changes.....	5
Cracked terrain in Argyre basin.....	6
Concentric crater fill in northeast Arabia Terra.....	7
Sinuuous linear gullies in Hellas Planitia.....	8
Mounds on Hrad Vallis mudflow.....	9
Lobate features in eastern Acidalia Planitia.....	10
Floor-fractured crater in Elysium Planitia.....	11
Craters and lava in Elysium Planitia.....	12
Well-preserved 3-km impact crater in Nereidum Montes.....	13
Central Chasma Boreale scarp.....	14
West Olympia Undae dunes.....	15

Sharp-looking gullies

DTEEC_004167_1400_002888_1400_A01



39.6°S 87.9°E

DTM Producer: UA | Kris Akers

Stereo Pair:

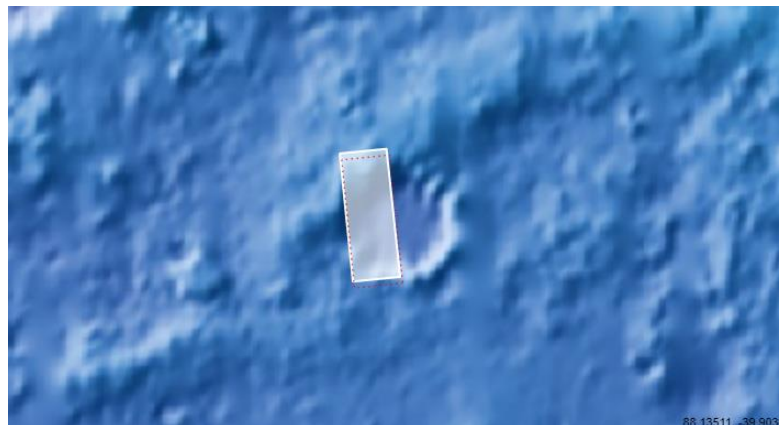
PSP_004167_1400

PSP_002888_1400

For more details about this DTM, visit:

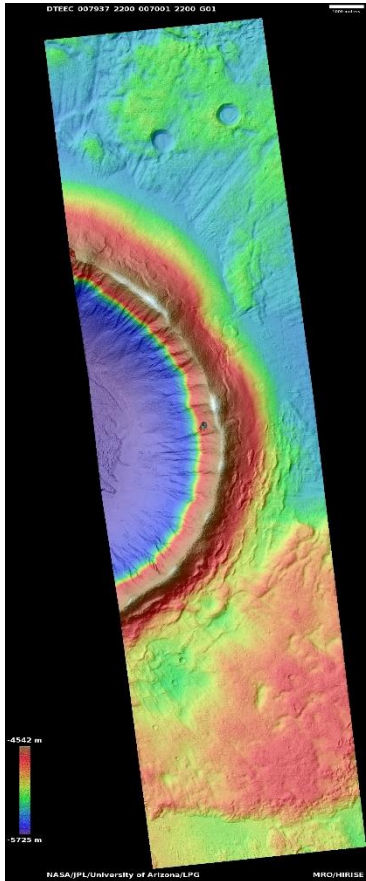
[https://www.uahirise.org/dtm/dtm.php?](https://www.uahirise.org/dtm/dtm.php?ID=PSP_004167_1400)

[ID=PSP_004167_1400](https://www.uahirise.org/dtm/dtm.php?ID=PSP_004167_1400)



Crater with multiple gully orientations

DTEEC_007937_2200_007001_2200_G01



39.5°N 105.5°E

DTM Producer: LPG | Axel Noblet

Stereo Pair:

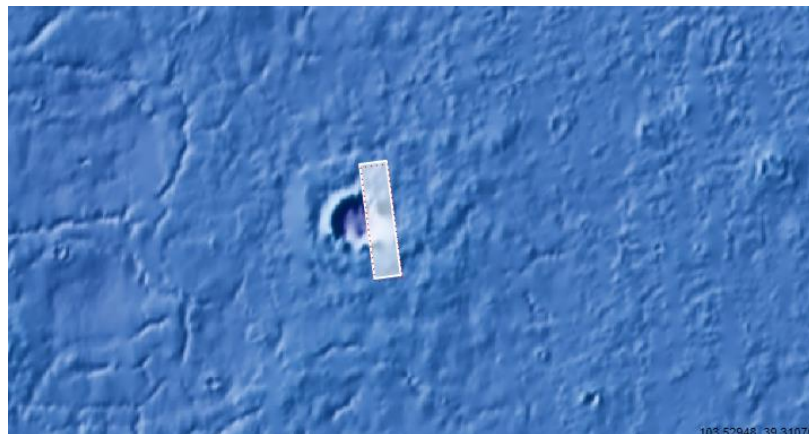
PSP_007937_2200

PSP_007001_2200

For more details about this DTM, visit:

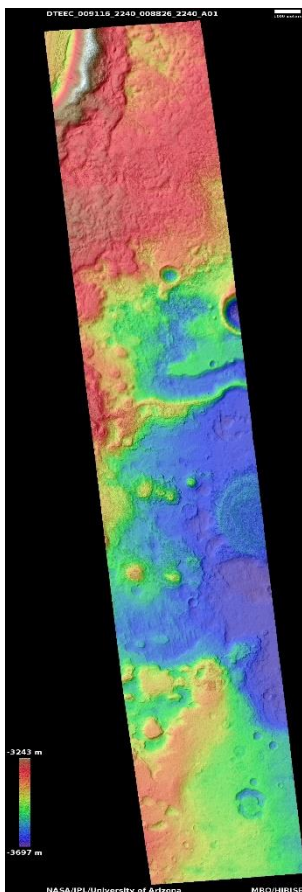
[https://www.uahirise.org/dtm/dtm.php?](https://www.uahirise.org/dtm/dtm.php?ID=PSP_007937_2200)

[ID=PSP_007937_2200](https://www.uahirise.org/dtm/dtm.php?ID=PSP_007937_2200)



Possible phyllosilicates in bedrock-rich region of Acidalia Planitia

DTEEC_009116_2240_008826_2240_A01



43.4°N 309.5°E

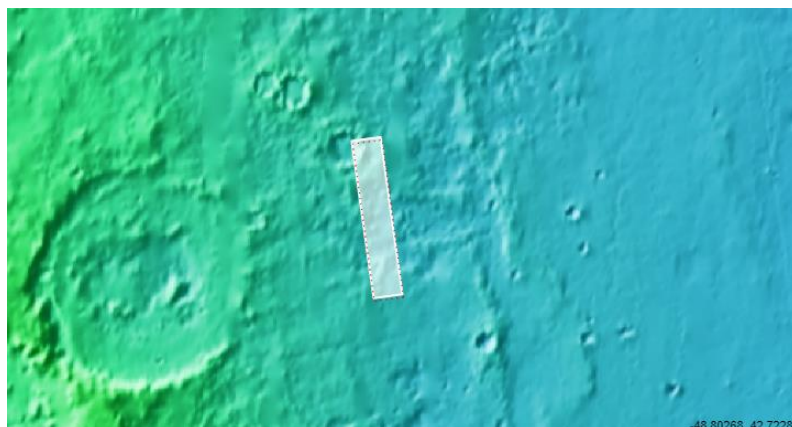
DTM Producer: UA | Branden M Gosse

Stereo Pair:

PSP_009116_2240

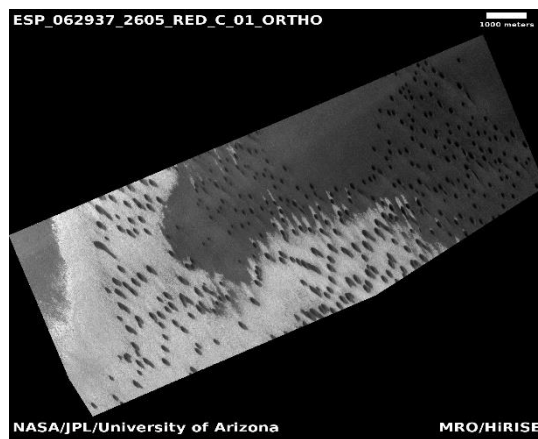
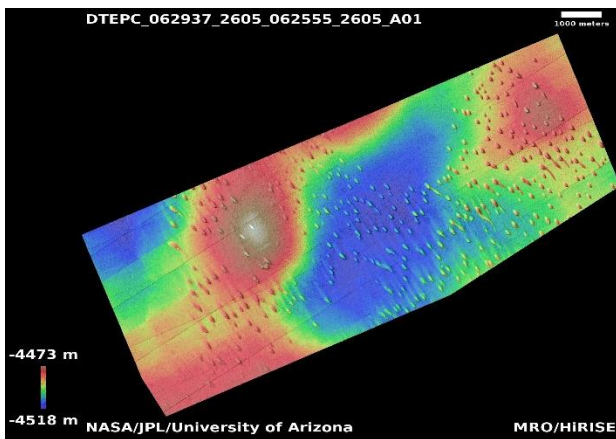
PSP_008826_2240

For more details about this DTM, visit:
[https://www.uahirise.org/dtm/dtm.php?
ID=PSP_009116_2240](https://www.uahirise.org/dtm/dtm.php?ID=PSP_009116_2240)



North polar dune forms and frost

DTEPC_062937_2605_062555_2605_A01



80.4°N 96.4°E

DTM Producer: UA | Riley McClurkin

Stereo Pair:

ESP_062937_2605

ESP_062555_2605

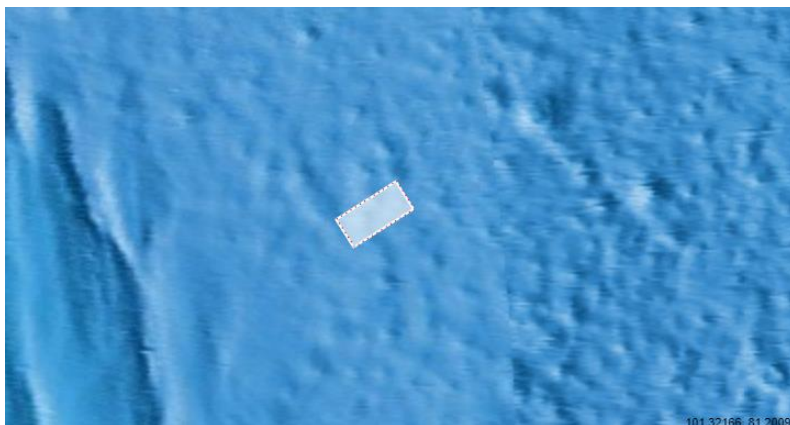
Extra Ortho:

PSP_010020_2605

For more details about this DTM, visit:

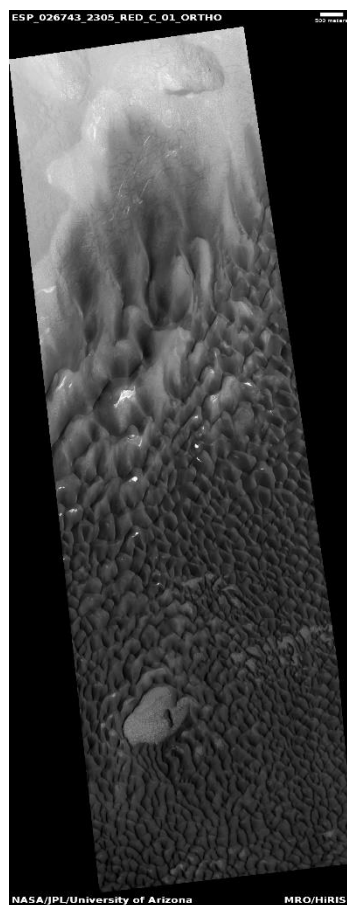
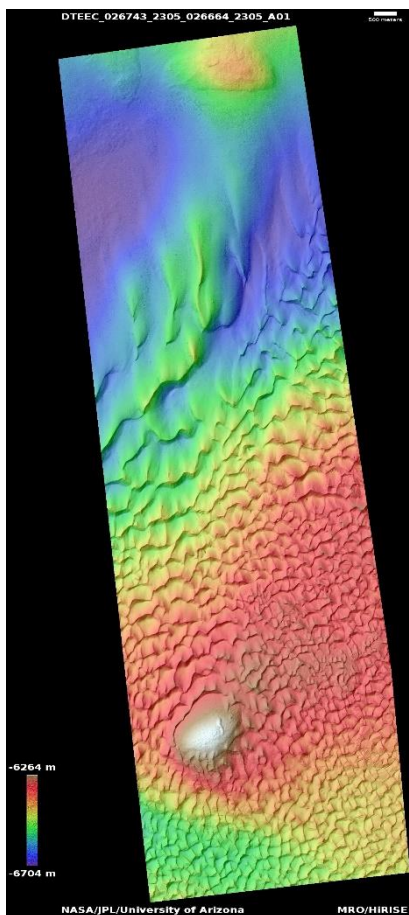
[https://www.uahirise.org/dtm/dtm.php?](https://www.uahirise.org/dtm/dtm.php?ID=ESP_062937_2605)

[ID=ESP_062937_2605](https://www.uahirise.org/dtm/dtm.php?ID=ESP_062937_2605)



Lyot Crater dune changes

DTEEC_026743_2305_026664_2305_A01



50.3°N 28.9°E

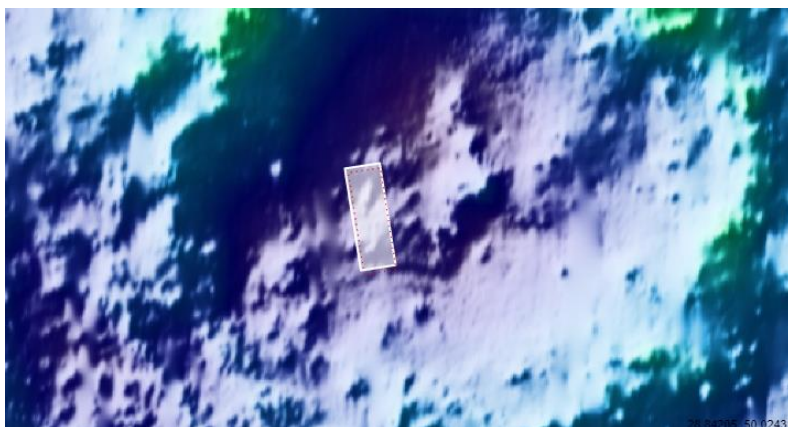
DTM Producer: UA | Kris Akers

Stereo Pair:

ESP_026743_2305

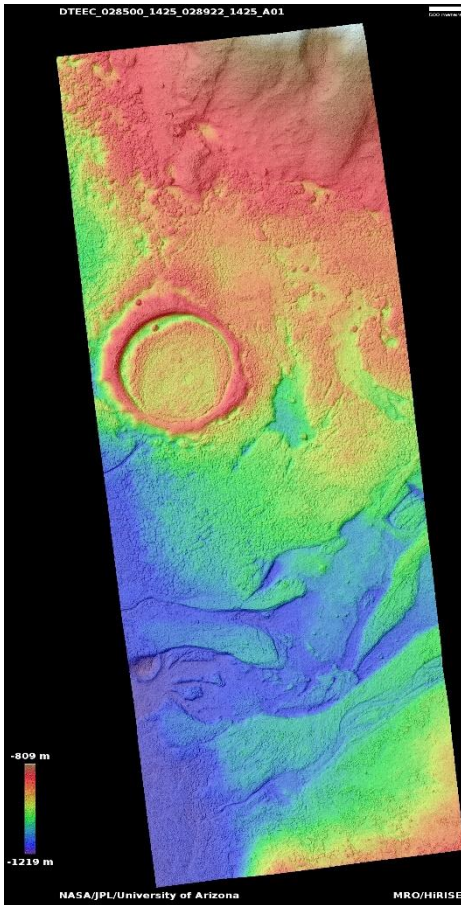
ESP_026664_2305

For more details about this DTM, visit:
[https://www.uahirise.org/dtm/dtm.php?
ID=ESP_026743_2305](https://www.uahirise.org/dtm/dtm.php?ID=ESP_026743_2305)



Cracked terrain in Argyre basin

DTEEC_028500_1425_028922_1425_A01



37.3°S 319.4°E

DTM Producer: UA | Kris Akers

Stereo Pair:

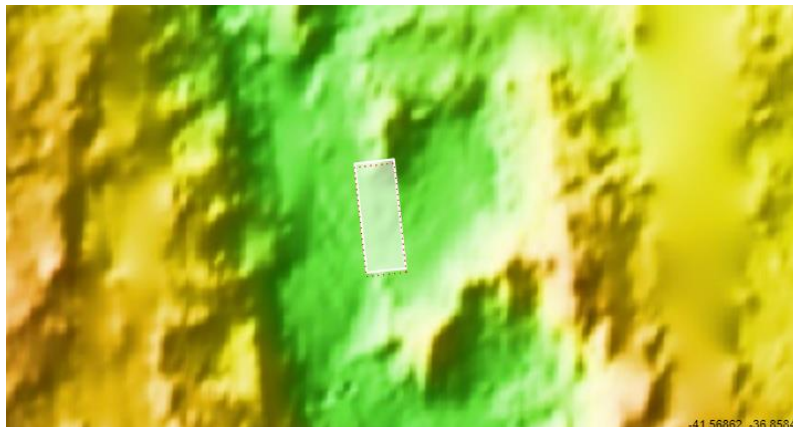
ESP_028500_1425

ESP_028922_1425

For more details about this DTM, visit:

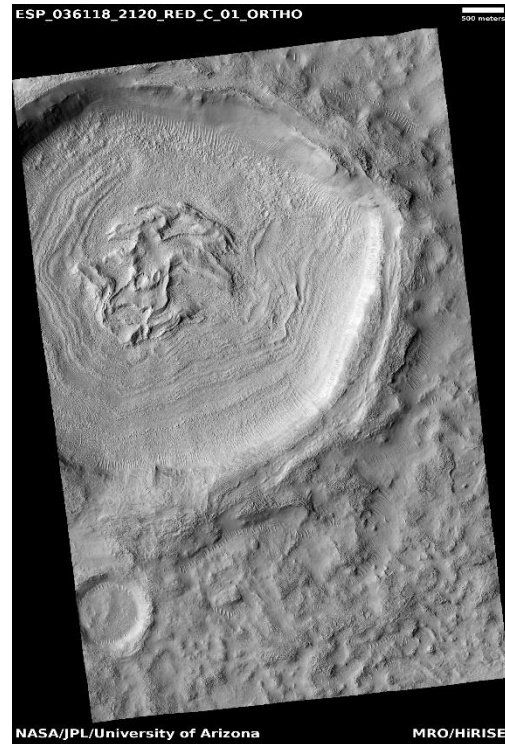
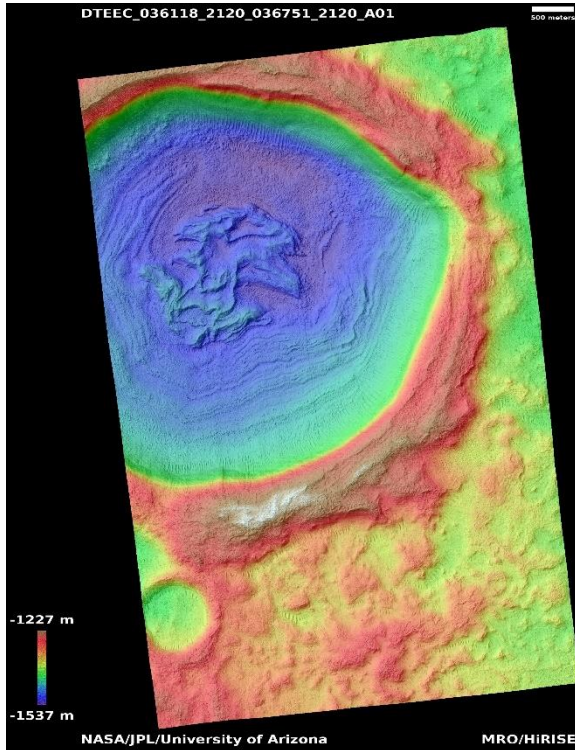
[https://www.uahirise.org/dtm/dtm.php?](https://www.uahirise.org/dtm/dtm.php?ID=ESP_028500_1425)

[ID=ESP_028500_1425](https://www.uahirise.org/dtm/dtm.php?ID=ESP_028500_1425)



Concentric crater fill in northeast Arabia Terra

DTEEC_036118_2120_036751_2120_A01



31.8°N 45.8°E

DTM Producer: UA | Kris Akers

Stereo Pair:

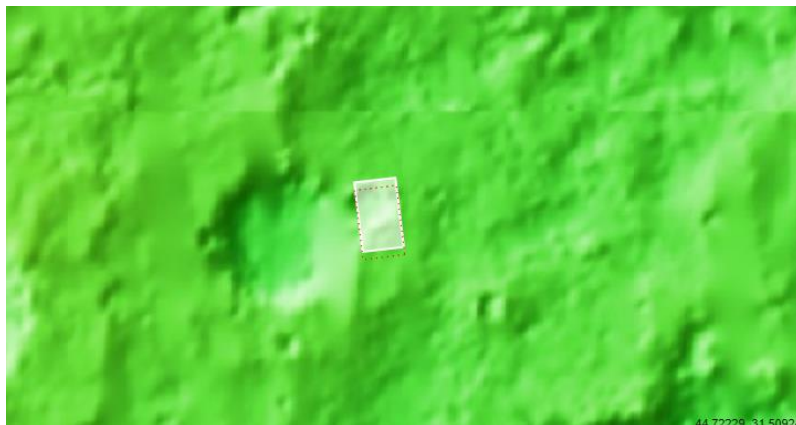
ESP_036118_2120

ESP_036751_2120

For more details about this DTM, visit:

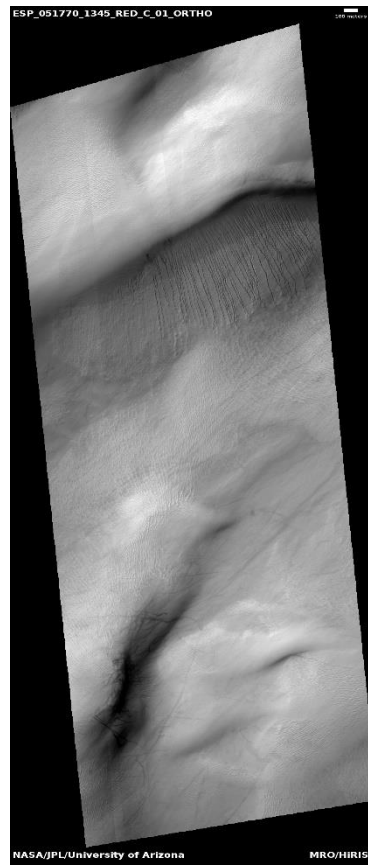
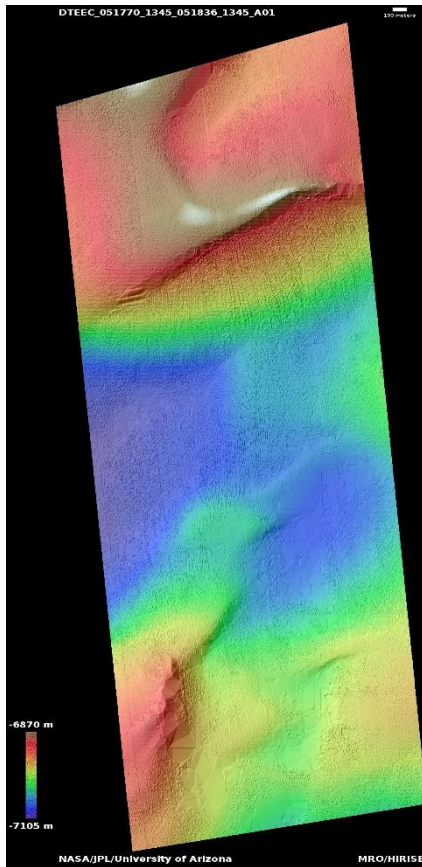
[https://www.uahirise.org/dtm/dtm.php?](https://www.uahirise.org/dtm/dtm.php?ID=ESP_036118_2120)

[ID=ESP_036118_2120](https://www.uahirise.org/dtm/dtm.php?ID=ESP_036118_2120)



Sinuuous linear gullies in Hellas Planitia

DTEEC_051770_1345_051836_1345_A01



45.3°S 67.2°E

DTM Producer: UA | Kris Akers

Stereo Pair:

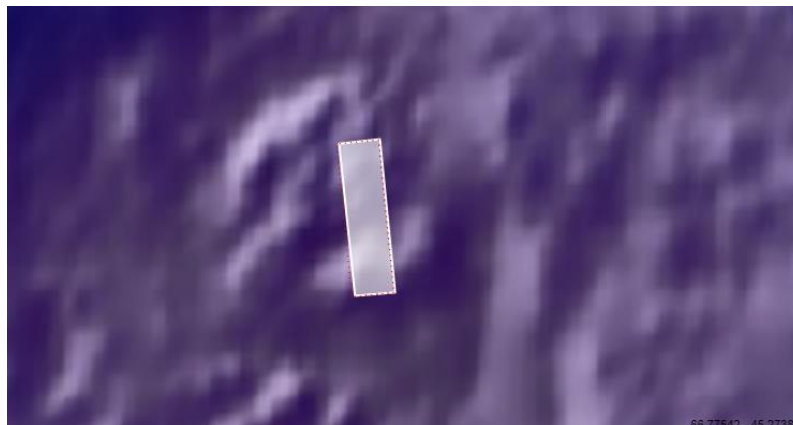
ESP_051770_1345

ESP_051836_1345

For more details about this DTM, visit:

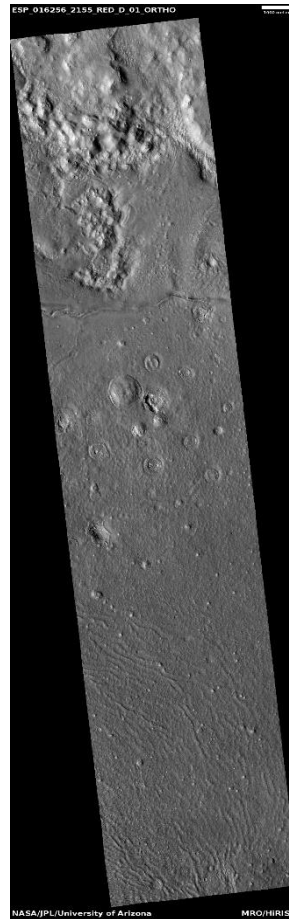
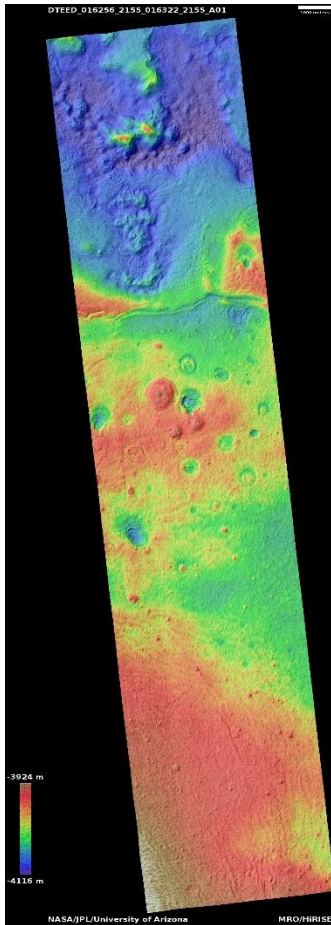
[https://www.uahirise.org/dtm/dtm.php?](https://www.uahirise.org/dtm/dtm.php?ID=ESP_051770_1345)

[ID=ESP_051770_1345](https://www.uahirise.org/dtm/dtm.php?ID=ESP_051770_1345)



Mounds on Hrad Vallis mudflow

DTEED_016256_2155_016322_2155_A01



35.1°N 142.5°E

DTM Producer: UA | Branden M Gosse

Stereo Pair:

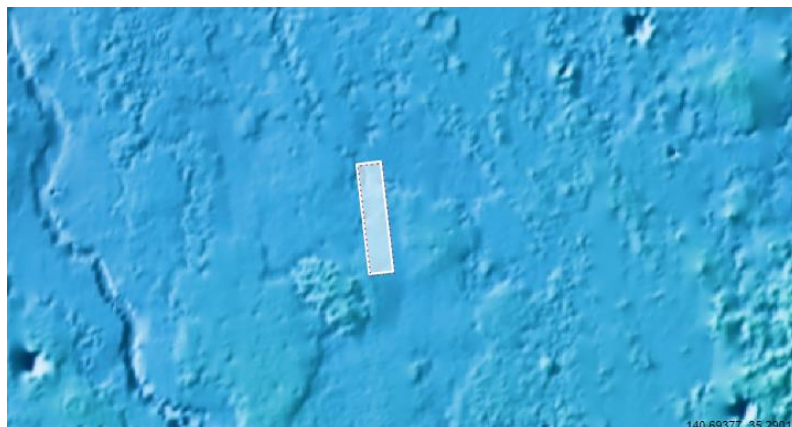
ESP_016256_2155

ESP_016322_2155

For more details about this DTM, visit:

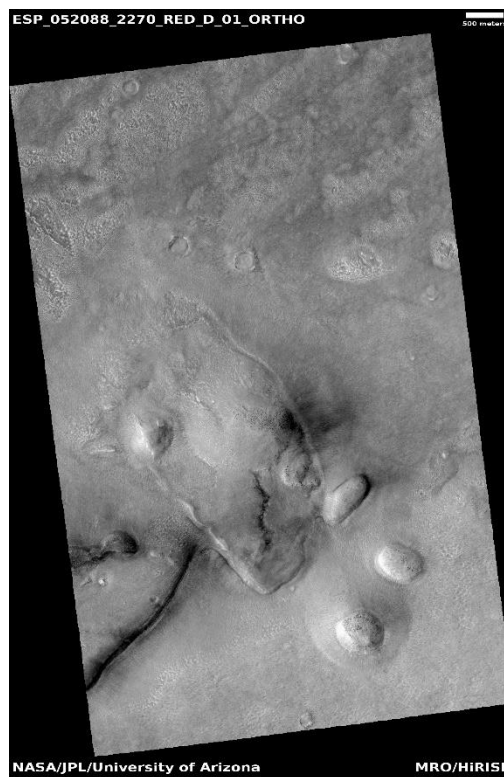
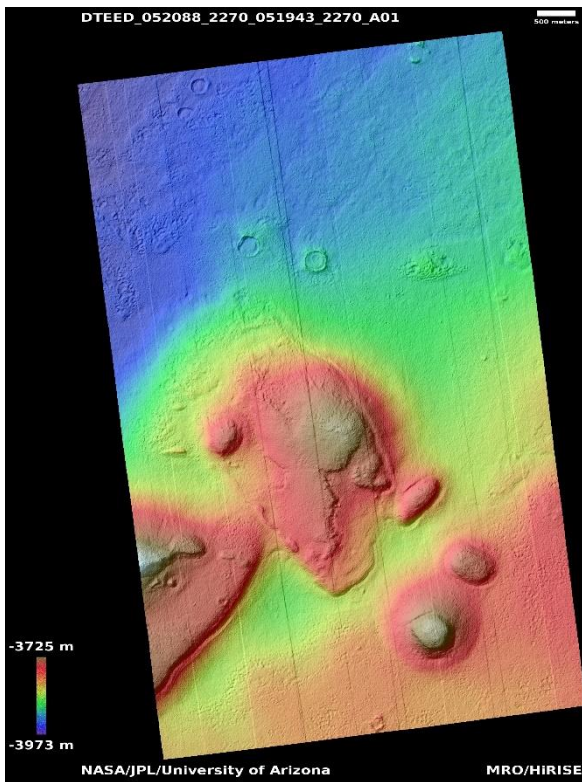
[https://www.uahirise.org/dtm/dtm.php?](https://www.uahirise.org/dtm/dtm.php?ID=ESP_016256_2155)

[ID=ESP_016256_2155](https://www.uahirise.org/dtm/dtm.php?ID=ESP_016256_2155)



Lobate features in eastern Acidalia Planitia

DTEED_052088_2270_051943_2270_A01



46.8°N 13.0°E

DTM Producer: UA | Kris Akers

Stereo Pair:

ESP_052088_2270

ESP_051943_2270

For more details about this DTM, visit:

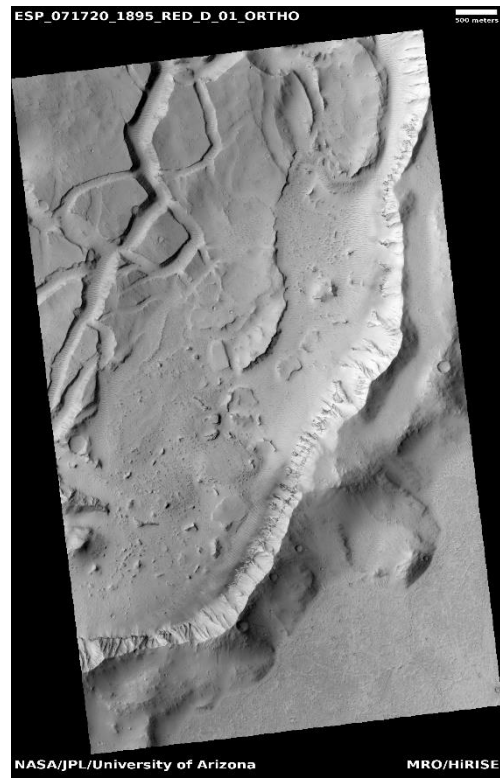
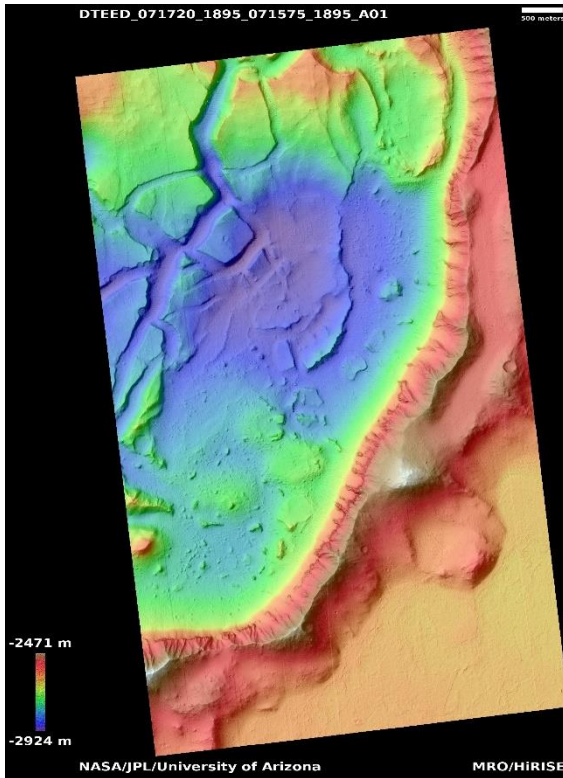
<https://www.uahirise.org/dtm/dtm.php?>

[ID=ESP_052088_2270](https://www.uahirise.org/dtm/dtm.php?ID=ESP_052088_2270)



Floor-fractured crater in Elysium Planitia

DTEED_071720_1895_071575_1895_A01



9.4°N 163.2°E

DTM Producer: UA | Maximus X Cabrera

Stereo Pair:

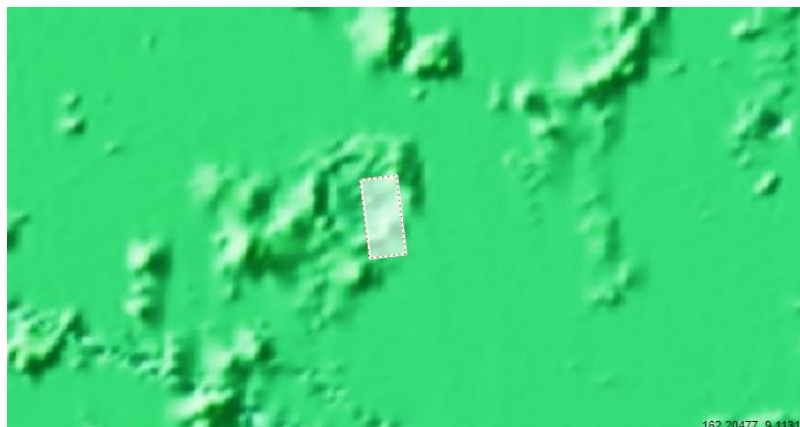
ESP_071720_1895

ESP_071575_1895

For more details about this DTM, visit:

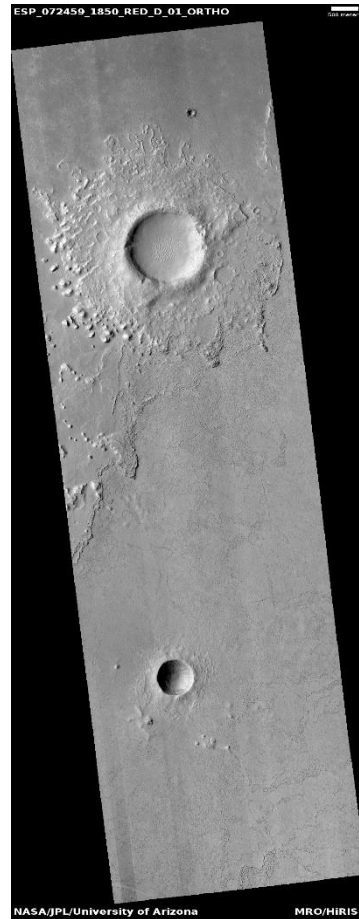
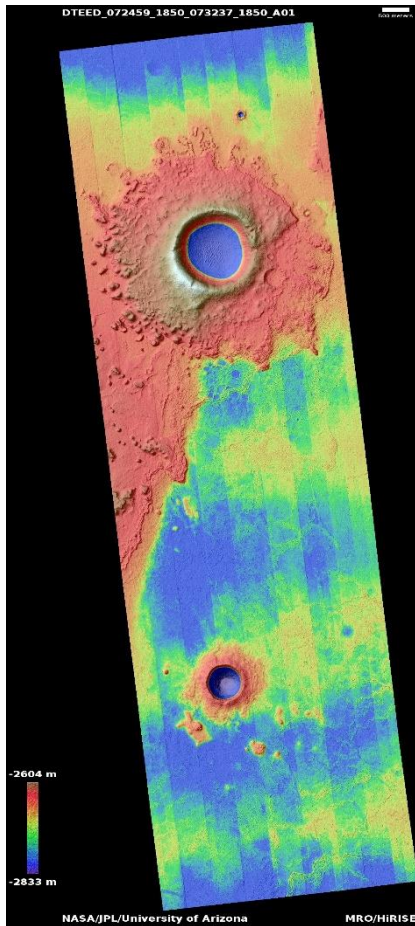
[https://www.uahirise.org/dtm/dtm.php?](https://www.uahirise.org/dtm/dtm.php?ID=ESP_071720_1895)

[ID=ESP_071720_1895](https://www.uahirise.org/dtm/dtm.php?ID=ESP_071720_1895)



Craters and lava in Elysium Planitia

DTEED_072459_1850_073237_1850_A01



4.8°N 146.2°E

DTM Producer: UA | Branden M Gosse

Stereo Pair:

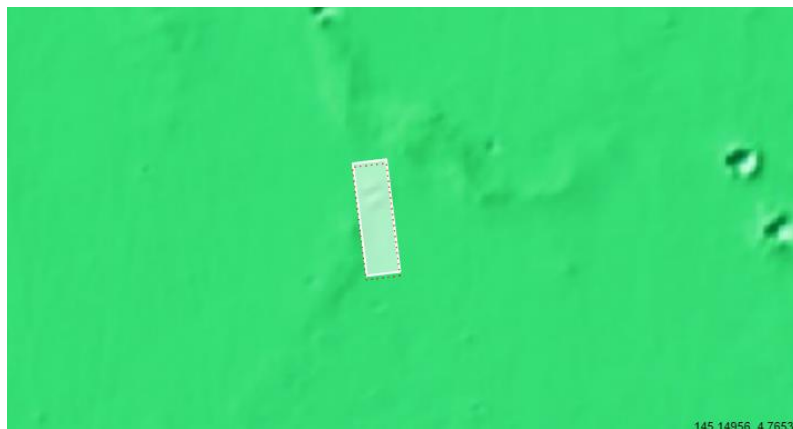
ESP_072459_1850

ESP_073237_1850

For more details about this DTM, visit:

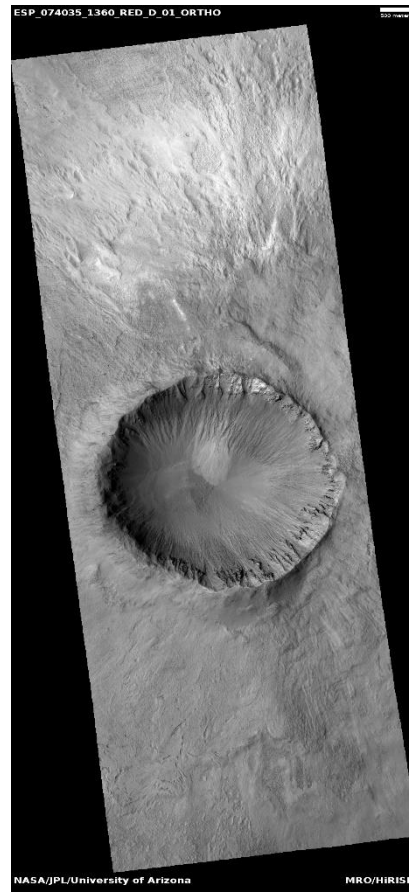
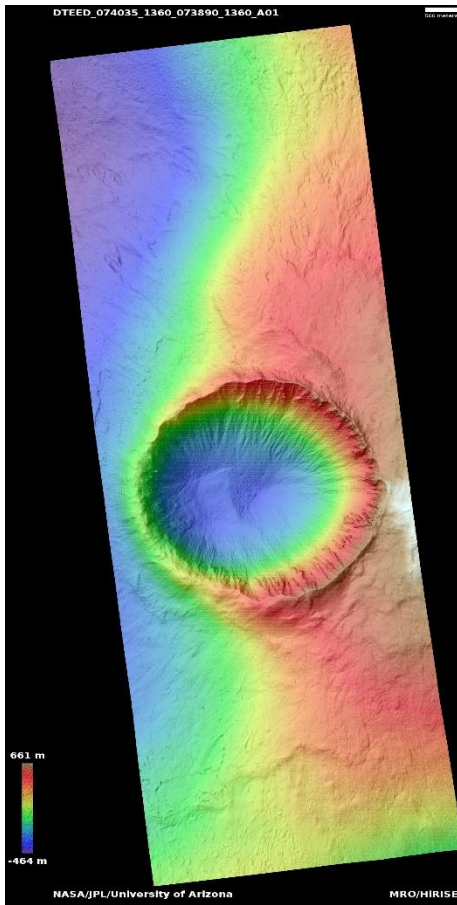
[https://www.uahirise.org/dtm/dtm.php?](https://www.uahirise.org/dtm/dtm.php?ID=ESP_072459_1850)

[ID=ESP_072459_1850](https://www.uahirise.org/dtm/dtm.php?ID=ESP_072459_1850)



Well-preserved 3-km impact crater in Nereidum

DTEED_074035_1360_073890_1360_A01



43.6°S 326.2°E

DTM Producer: UA | Branden M Gosse

Stereo Pair:

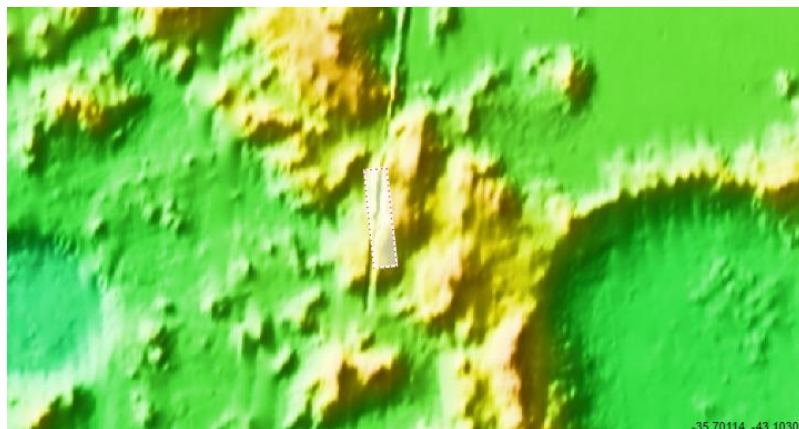
ESP_074035_1360

ESP_073890_1360

For more details about this DTM, visit:

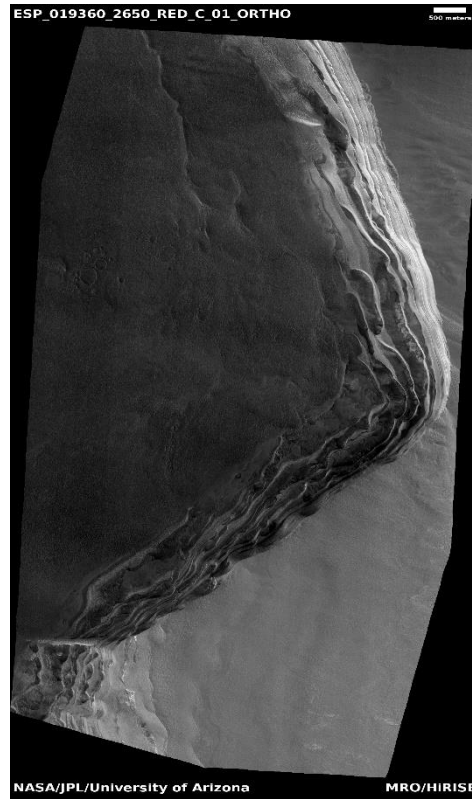
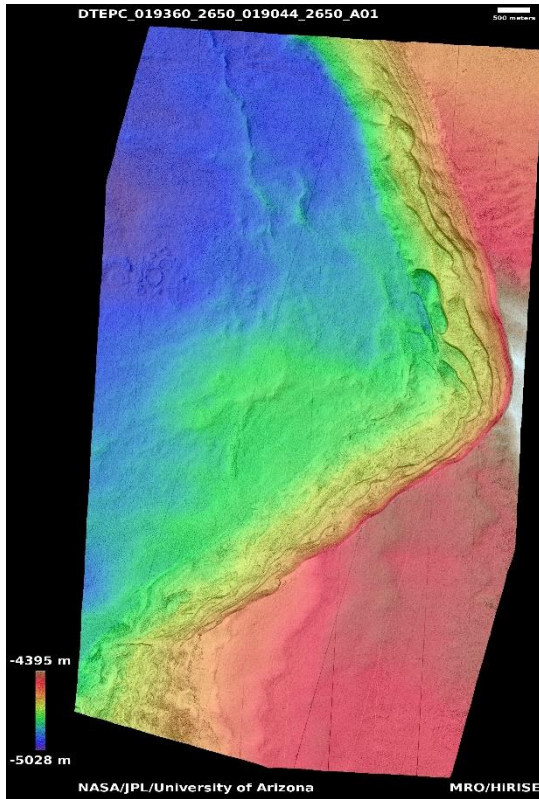
[https://www.uahirise.org/dtm/dtm.php?](https://www.uahirise.org/dtm/dtm.php?ID=ESP_074035_1360)

[ID=ESP_074035_1360](https://www.uahirise.org/dtm/dtm.php?ID=ESP_074035_1360)



Central Chasma Boreale scarp

DTEPC_019360_2650_019044_2650_A01



84.8°N 343.0°E

DTM Producer: UA | Kris Akers

Stereo Pair:

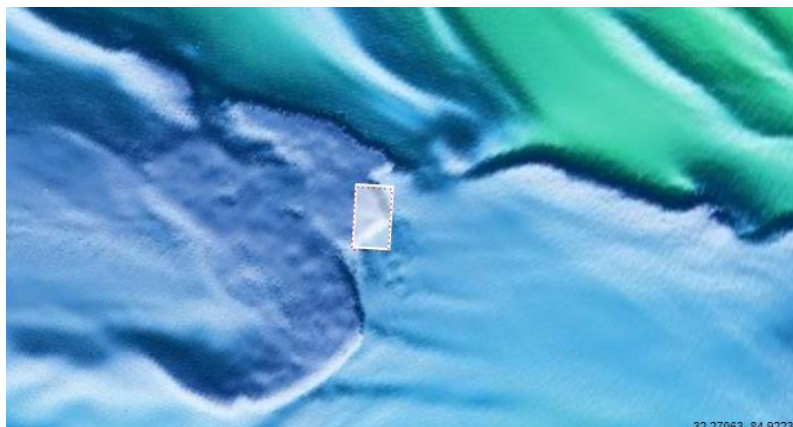
ESP_019360_2650

ESP_019044_2650

For more details about this DTM, visit:

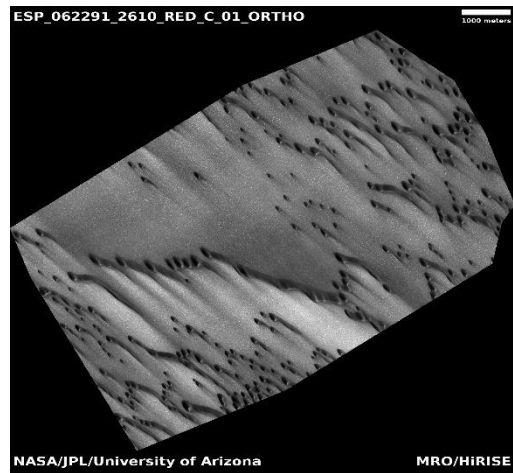
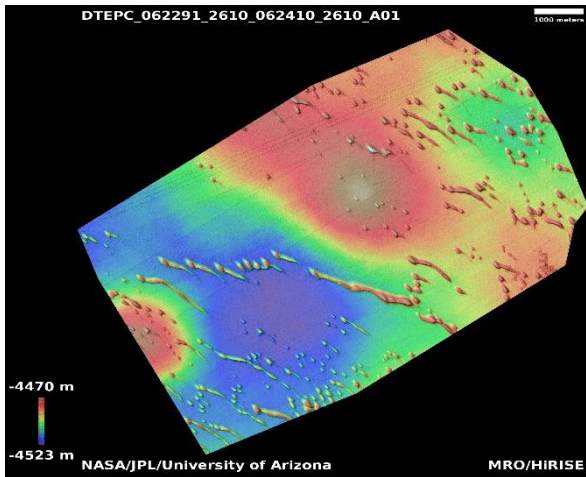
[https://www.uahirise.org/dtm/dtm.php?](https://www.uahirise.org/dtm/dtm.php?ID=ESP_019360_2650)

[ID=ESP_019360_2650](https://www.uahirise.org/dtm/dtm.php?ID=ESP_019360_2650)



West Olympia Undae dunes

DTEPC_062291_2610_062410_2610_A01



80.8°N 102.0°E

DTM Producer: UA | Kris Akers

Stereo Pair:

ESP_062291_2610

ESP_062410_2610

For more details about this DTM, visit:

<https://www.uahirise.org/dtm/dtm.php?>

[ID=ESP_062291_2610](https://www.uahirise.org/dtm/dtm.php?ID=ESP_062291_2610)

