



**HIGH RESOLUTION IMAGING  
SCIENCE EXPERIMENT**



**DTM PDS RELEASES**

*November 2022*

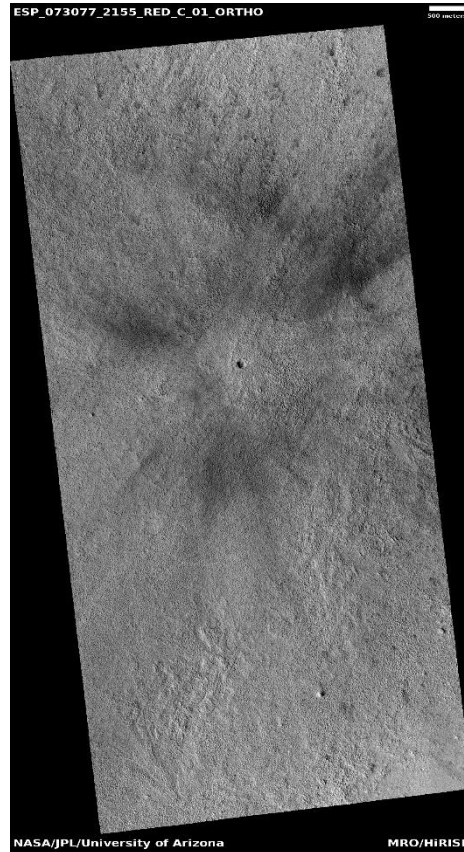
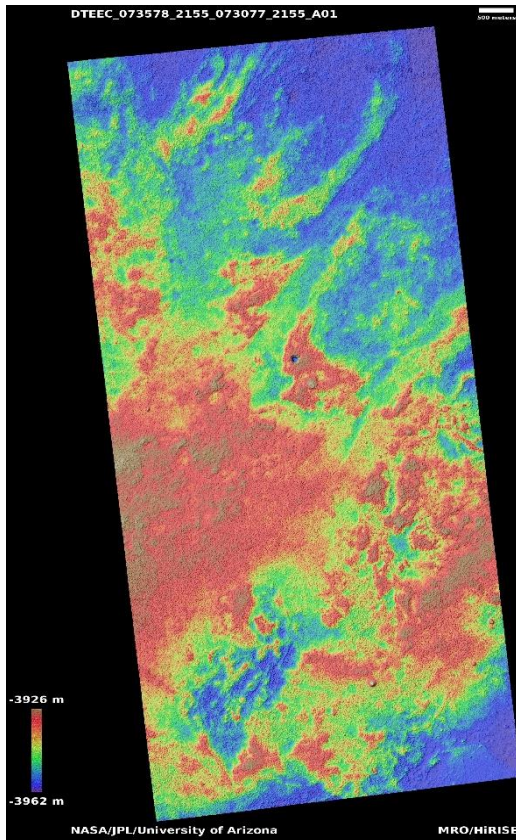
Edited by Kris Akers | UA

DTMs Included this Month

Candidate recent impact site.....	1
Candidate recent impact site.....	2
Square-shaped fresh crater near Gratteri Crater.....	3
Intracrater climbing dunes south of Aonia Terra.....	4
Northern plains crater modification.....	5
Lava spilling into crater.....	6
Channel in Newton Crater.....	7

# Candidate recent impact site

DTEEC\_073667\_2185\_073522\_2185\_A01



35.1°N 189.8°E

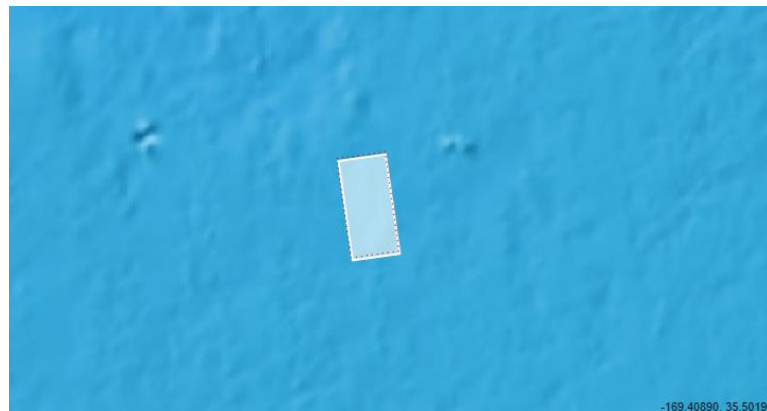
DTM Producer: UA | Kris Akers

Stereo Pair:

ESP\_073578\_2155

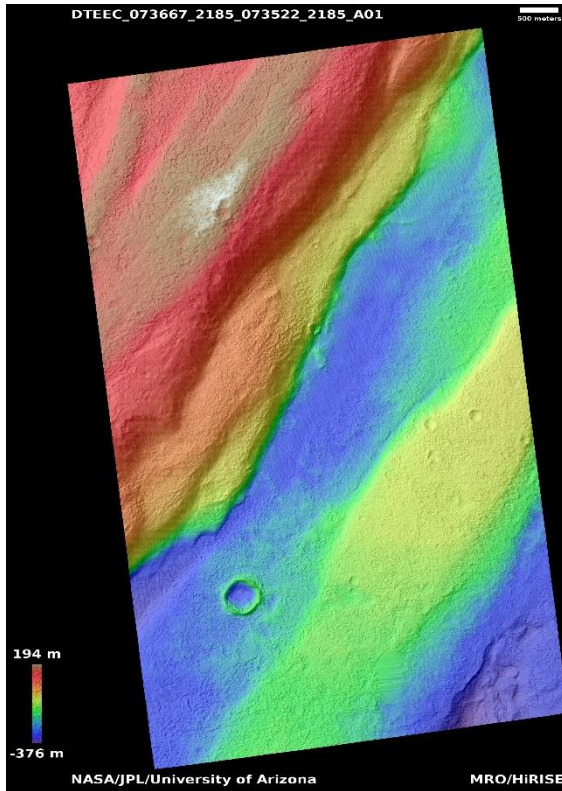
ESP\_073077\_2155

For more details about this DTM, visit:  
[https://www.uahirise.org/dtm/dtm.php?ID=ESP\\_073578\\_2155](https://www.uahirise.org/dtm/dtm.php?ID=ESP_073578_2155)



# Candidate recent impact site

DTEEC\_073667\_2185\_073522\_2185\_A01



38.1°N 280.1E

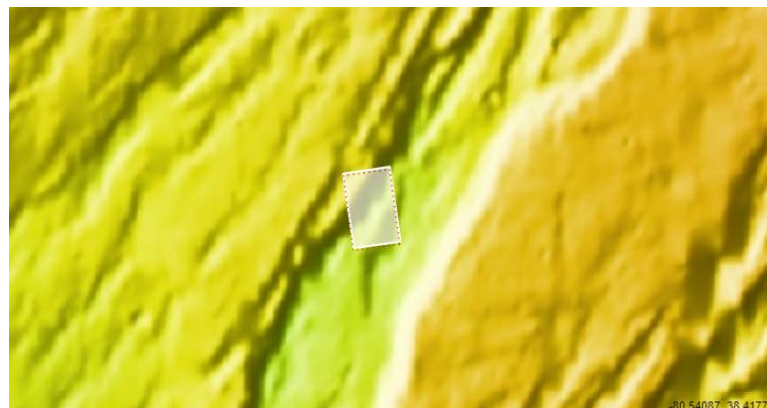
DTM Producer: UA | Kris Akers

Stereo Pair:

ESP\_073667\_2185

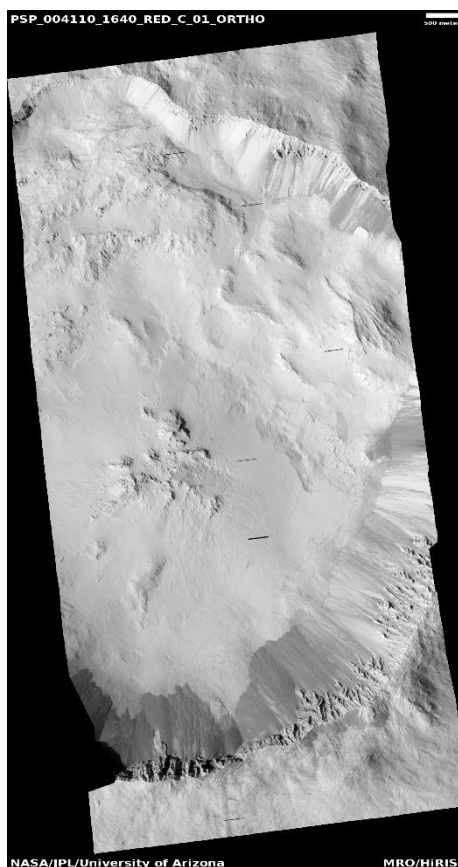
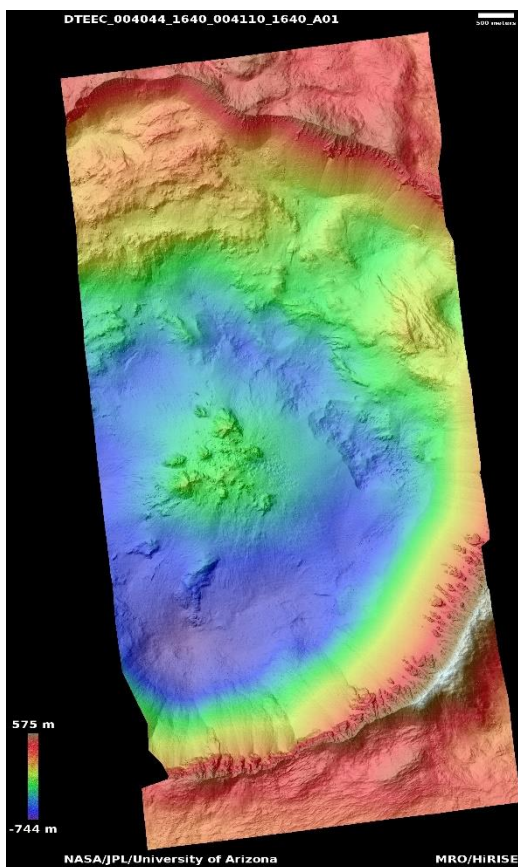
ESP\_073522\_2185

For more details about this DTM, visit:  
[https://www.uahirise.org/dtm/dtm.php?  
ID=ESP\\_073667\\_2185](https://www.uahirise.org/dtm/dtm.php?ID=ESP_073667_2185)



# Square-shaped fresh crater near Gratteri Crater

DTEEC\_004044\_1640\_004110\_1640\_A01



15.7°S 203.6°E

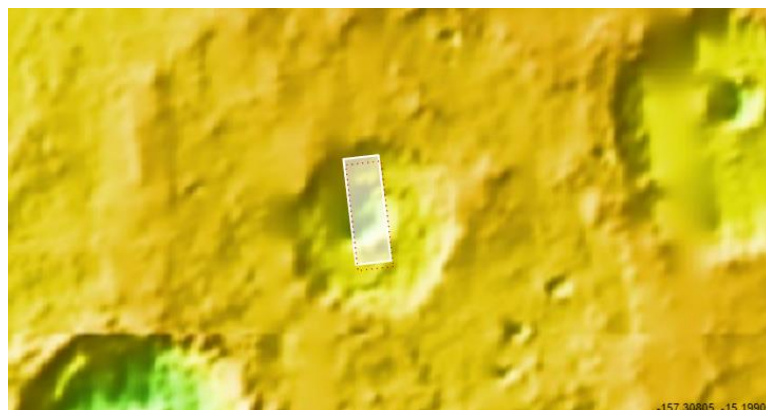
DTM Producer: UA | Kris Akers

Stereo Pair:

PSP\_004044\_1640

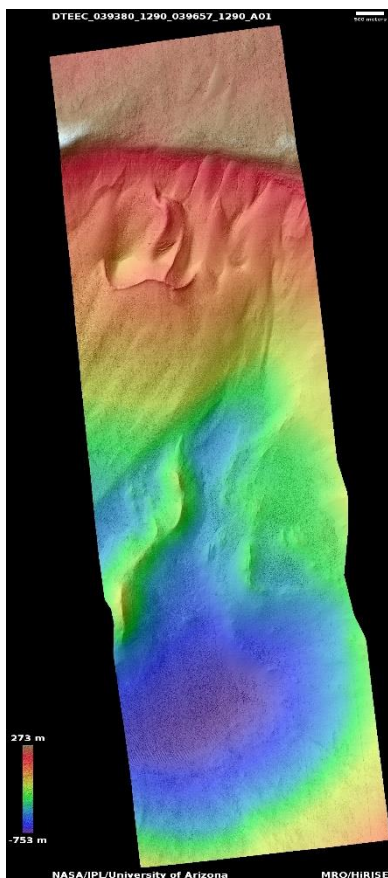
PSP\_004110\_1640

For more details about this DTM, visit:  
[https://www.uahirise.org/dtm/dtm.php?ID=PSP\\_004044\\_1640](https://www.uahirise.org/dtm/dtm.php?ID=PSP_004044_1640)



# Intracrater climbing dunes south of Aonia Terra

DTEEC\_039380\_1290\_039657\_1290\_A01



50.5°S 293.3°E

DTM Producer: UA | Kris Akers

Stereo Pair:

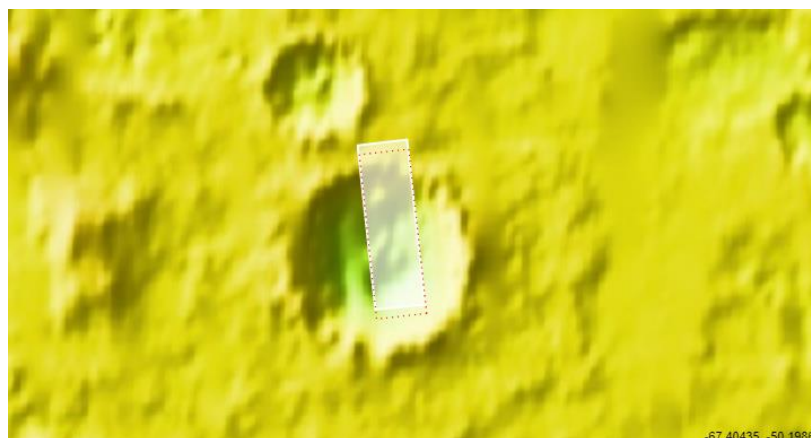
ESP\_039380\_1290

ESP\_039657\_1290

For more details about this DTM, visit:

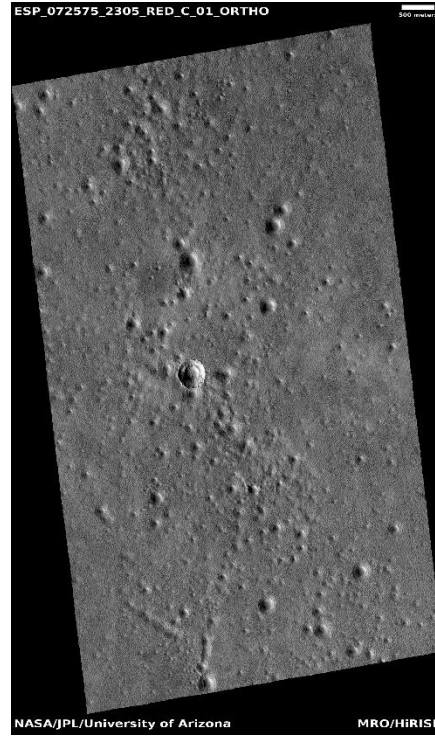
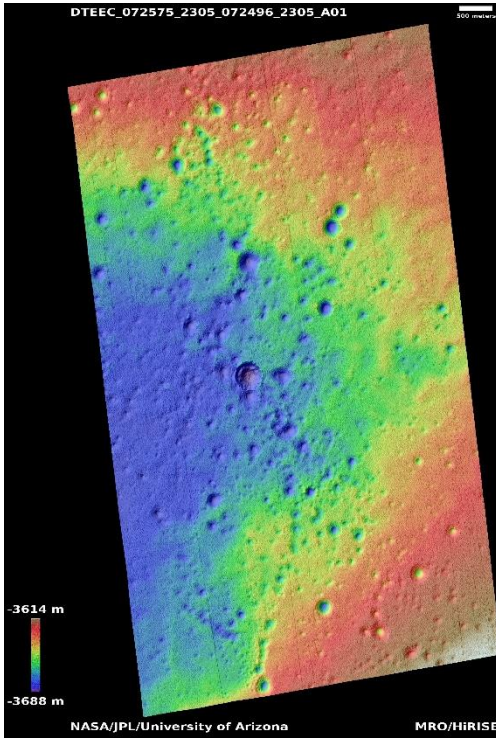
[https://www.uahirise.org/dtm/dtm.php?](https://www.uahirise.org/dtm/dtm.php?ID=ESP_039380_1290)

[ID=ESP\\_039380\\_1290](https://www.uahirise.org/dtm/dtm.php?ID=ESP_039380_1290)



# Northern plains crater modification

DTEEC\_072575\_2305\_072496\_2305\_A01



50.2°N 210.1°E

DTM Producer: UA | Branden M Gosse

Stereo Pair:

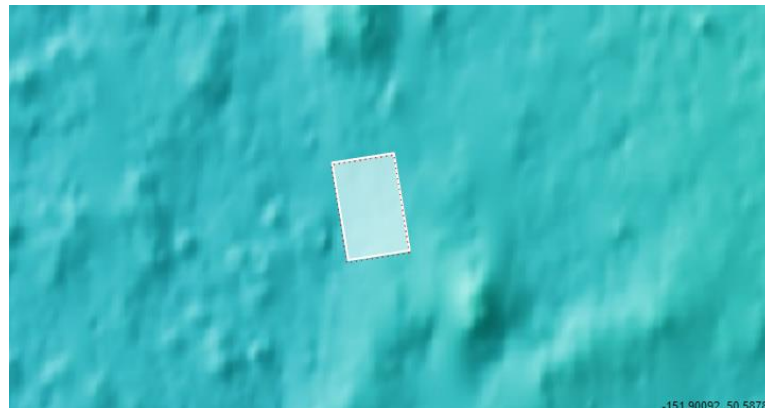
ESP\_072575\_2305

ESP\_072496\_2305

For more details about this DTM, visit:

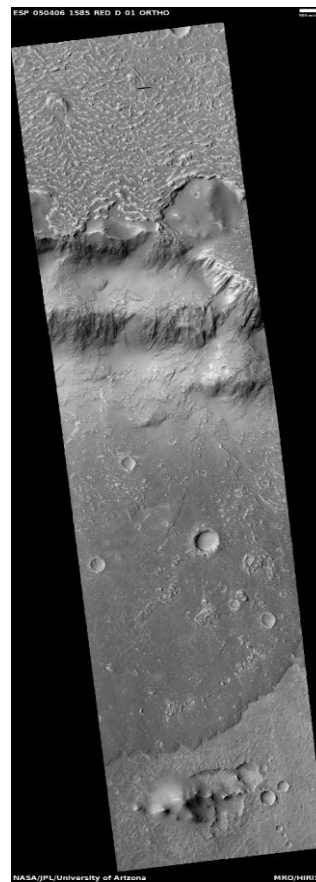
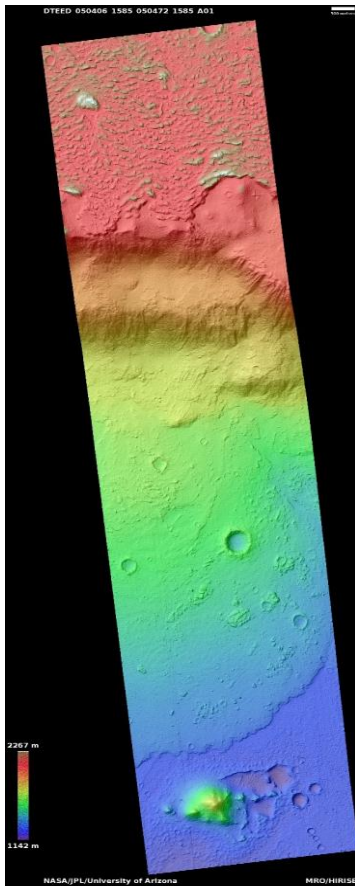
[https://www.uahirise.org/dtm/dtm.php?](https://www.uahirise.org/dtm/dtm.php?ID=ESP_072575_2305)

[ID=ESP\\_072575\\_2305](https://www.uahirise.org/dtm/dtm.php?ID=ESP_072575_2305)



# Lava spilling into crater

DTEED\_050406\_1585\_050472\_1585\_A01



21.3°S 223.1°E

DTM Producer: UA | Maximus X Cabrera

Stereo Pair:

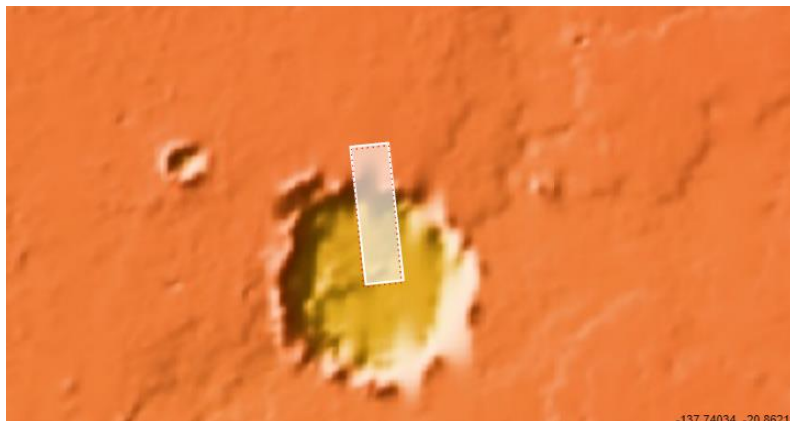
ESP\_050406\_1585

ESP\_050472\_1585

For more details about this DTM, visit:

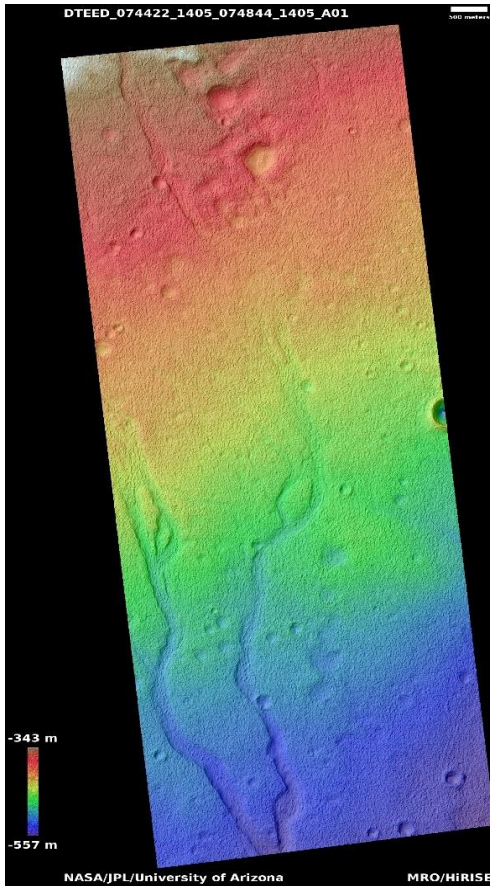
[https://www.uahirise.org/dtm/dtm.php?](https://www.uahirise.org/dtm/dtm.php?ID=ESP_050406_1585)

[ID=ESP\\_050406\\_1585](https://www.uahirise.org/dtm/dtm.php?ID=ESP_050406_1585)



# Channel in Newton Crater

DTEED\_074422\_1405\_074844\_1405\_A01



39.4°S 200.2°E

DTM Producer: UA | Maximus X Cabrera

Stereo Pair:

ESP\_074422\_1405

ESP\_074844\_1405

For more details about this DTM, visit:

[https://www.uahirise.org/dtm/dtm.php?](https://www.uahirise.org/dtm/dtm.php?ID=ESP_074422_1405)

[ID=ESP\\_074422\\_1405](https://www.uahirise.org/dtm/dtm.php?ID=ESP_074422_1405)

