



HIGH RESOLUTION IMAGING SCIENCE EXPERIMENT



DTM PDS RELEASES

May 2023

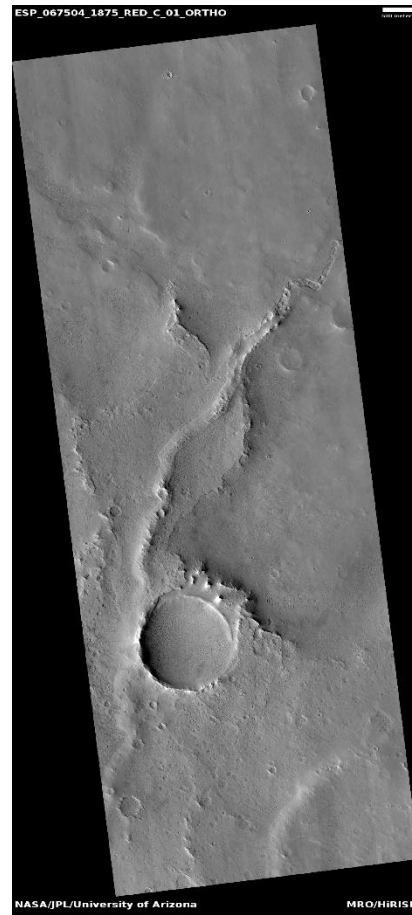
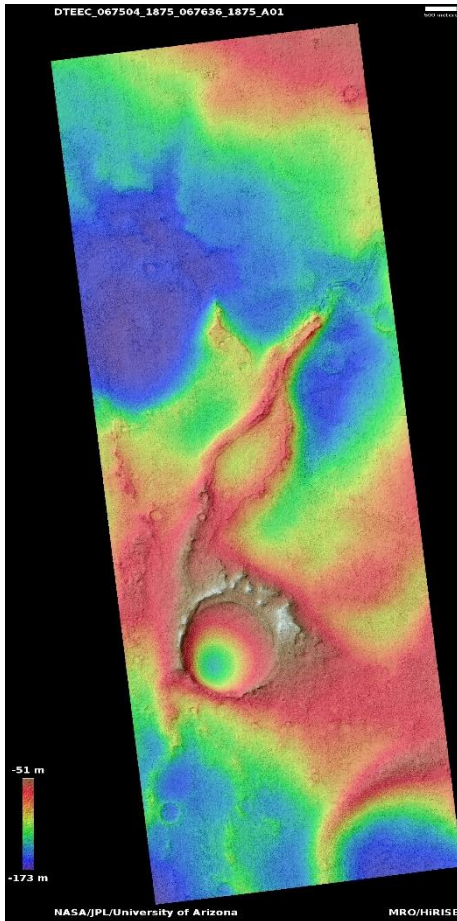
Edited by Kris Akers | UA

DTMs Included this Month

Valley-inverted channel transition in Arabia Terra.....	1
Small lobe of glacial cover on fresh impact crater.....	2
Possible future landing site near eastern valley of Jezero Crater.....	3
Islands and pendant bar like form in lava channel.....	4
Possible volcanic vent east of Olympus Mons.....	5
Dunes and gullies.....	6
Pit within crater north of Rabe Crater.....	7
Seasonal monitoring of polar crater with summer ice.....	8
Landforms in Hellas Planitia.....	9
Textured rock or mantling material in central Arabia Terra.....	10
Crater and extensive field of secondary craters seen in MOC image R15-02146.....	11
Pristine pancake crater in northern plains.....	12
Scarp monitoring.....	13

Valley-inverted channel transition in Arabia Terra

DTEEC_067504_1875_067636_1875_A01



7.6°N 26.2°E

DTM Producer: UA | Maximus X Cabrera

Stereo Pair:

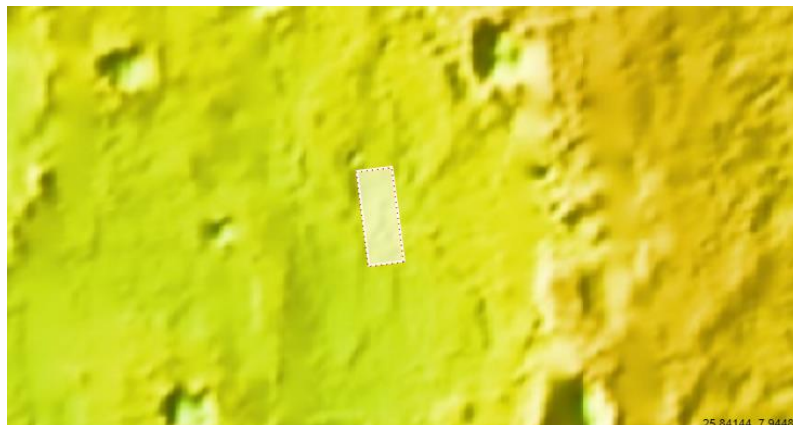
ESP_067504_1875

ESP_067636_1875

For more details about this DTM, visit:

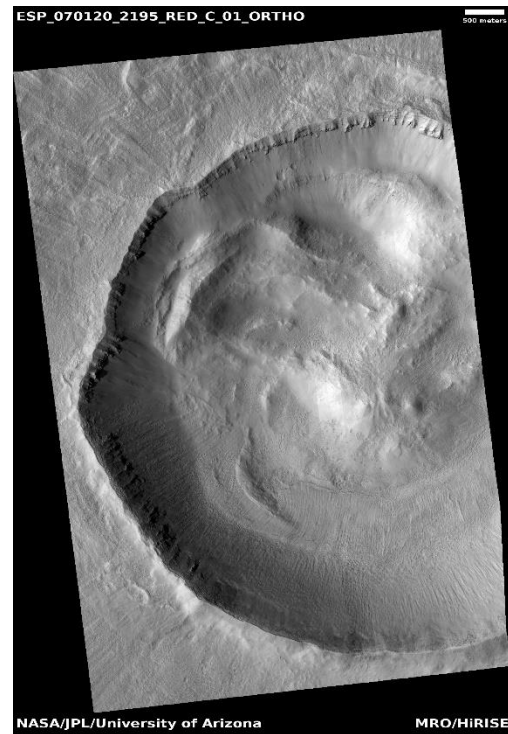
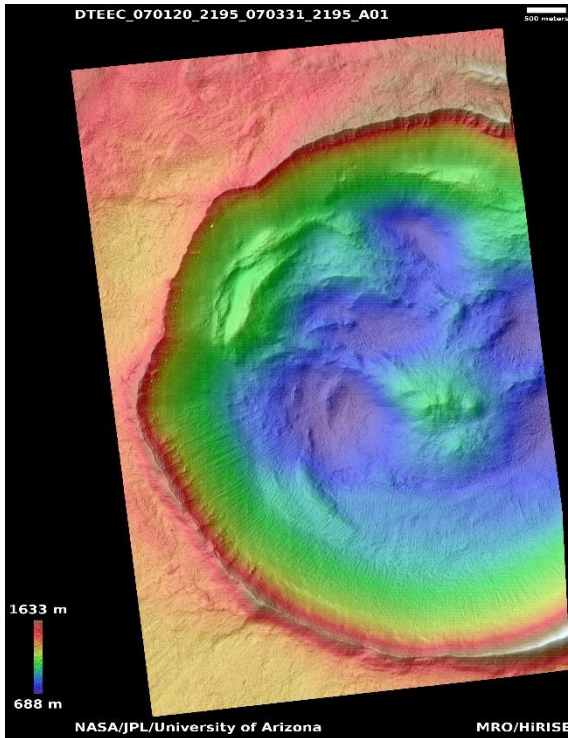
[https://www.uahirise.org/dtm/dtm.php?](https://www.uahirise.org/dtm/dtm.php?ID=ESP_067504_1875)

[ID=ESP_067504_1875](https://www.uahirise.org/dtm/dtm.php?ID=ESP_067504_1875)



Small lobe of glacial cover on fresh impact crater

DTEEC_070120_2195_070331_2195_A01



39.2°N 285.2°E

DTM Producer: UA | Maximus X Cabrera

Stereo Pair:

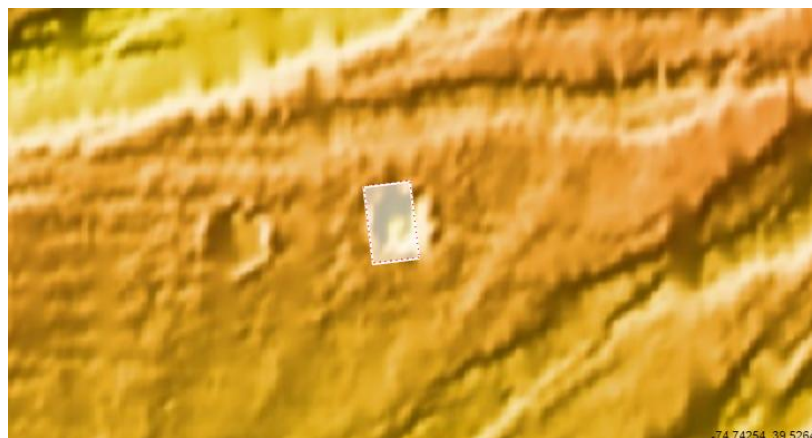
ESP_070120_2195

ESP_070331_2195

For more details about this DTM, visit:

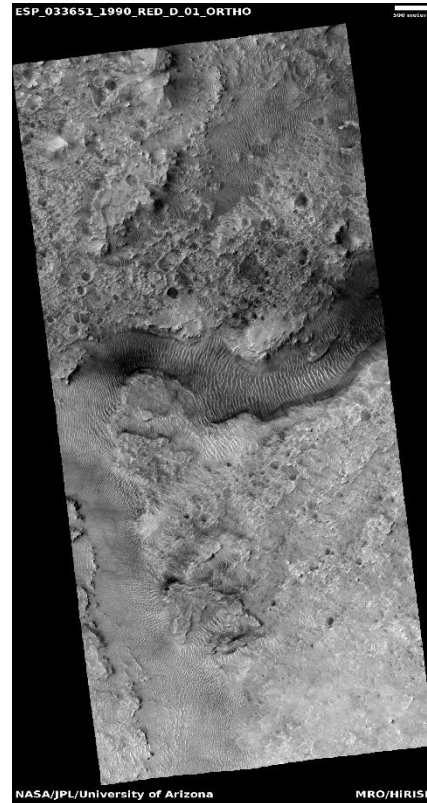
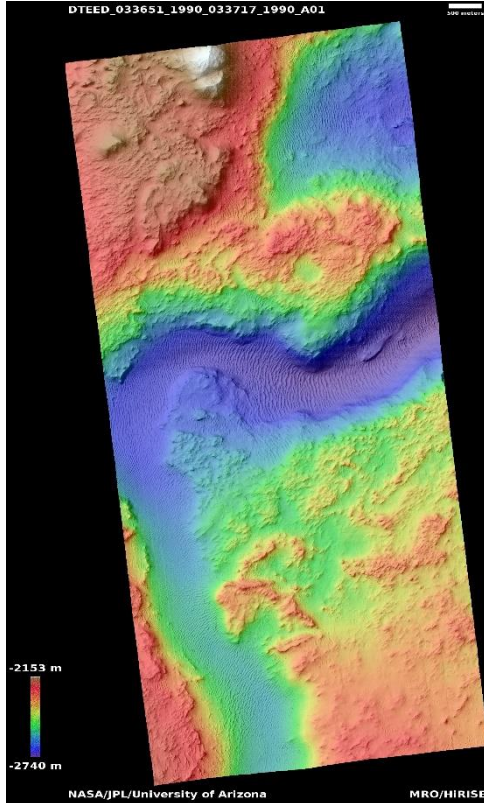
[https://www.uahirise.org/dtm/dtm.php?](https://www.uahirise.org/dtm/dtm.php?ID=ESP_070120_2195)

[ID=ESP_070120_2195](https://www.uahirise.org/dtm/dtm.php?ID=ESP_070120_2195)



Possible future landing site near eastern valley Jezero Crater

DTEED_033651_1990_033717_1990_A01



18.7°N 78.1°E

DTM Producer: UA | Kris Akers

Stereo Pair:

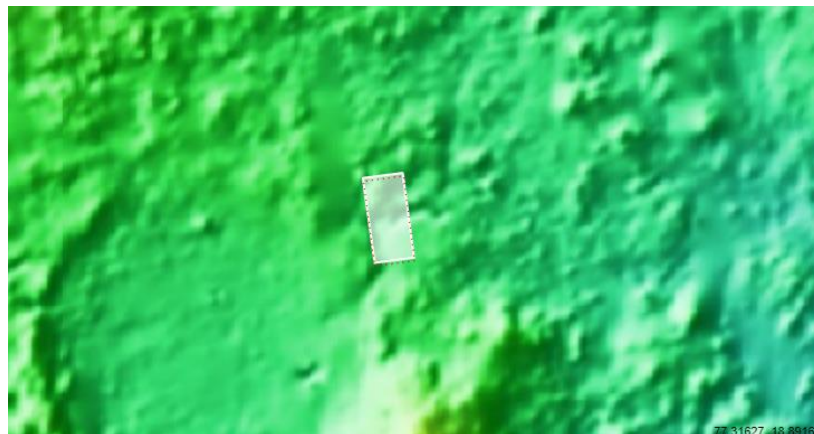
ESP_033651_1990

ESP_033717_1990

For more details about this DTM, visit:

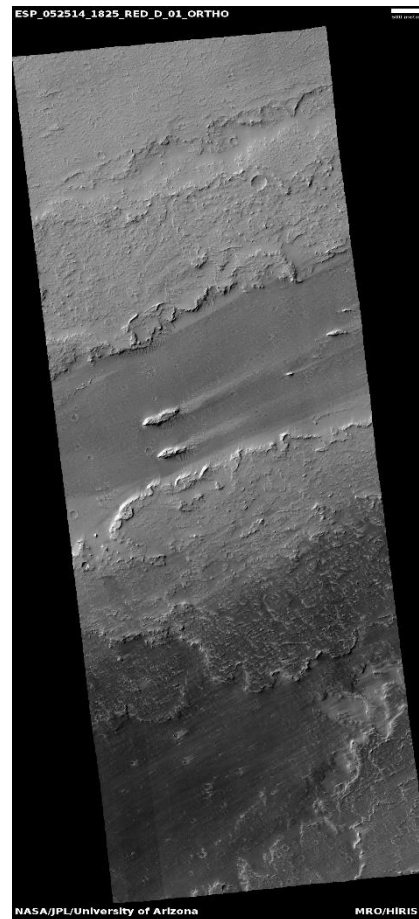
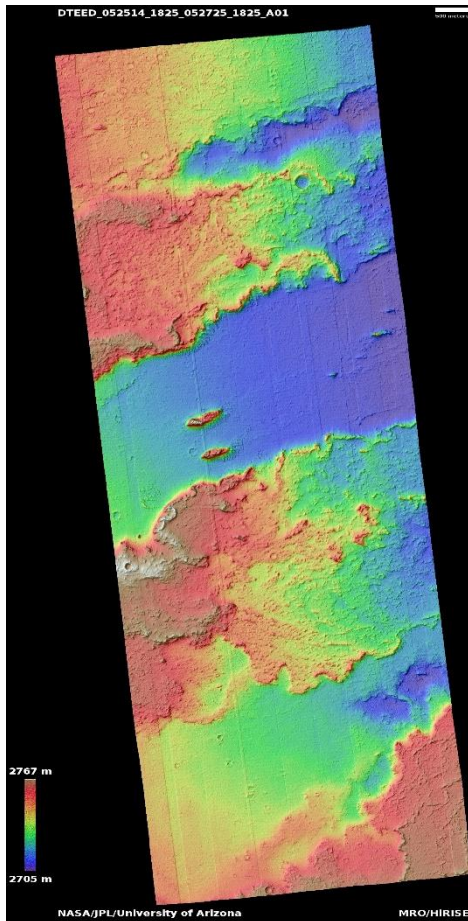
[https://www.uahirise.org/dtm/dtm.php?](https://www.uahirise.org/dtm/dtm.php?ID=ESP_033651_1990)

[ID=ESP_033651_1990](https://www.uahirise.org/dtm/dtm.php?ID=ESP_033651_1990)



Islands and pendant bar like form in lava channel

DTEED_052514_1825_052725_1825_A01



2.5°N 269.6°E

DTM Producer: UA | Kris Akers

Stereo Pair:

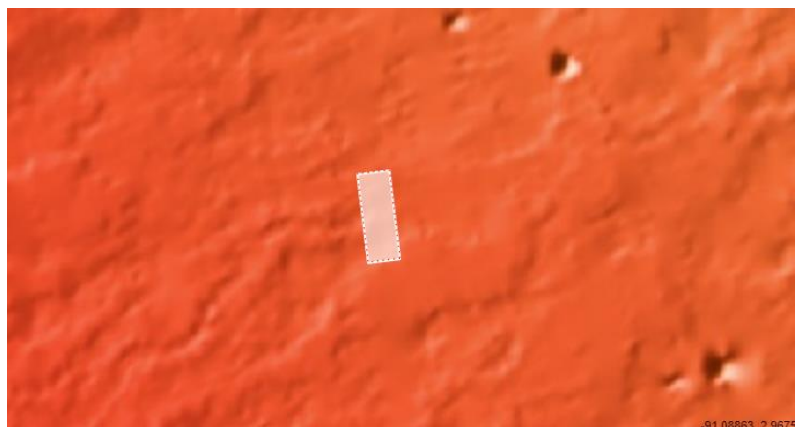
ESP_052514_1825

ESP_052725_1825

For more details about this DTM, visit:

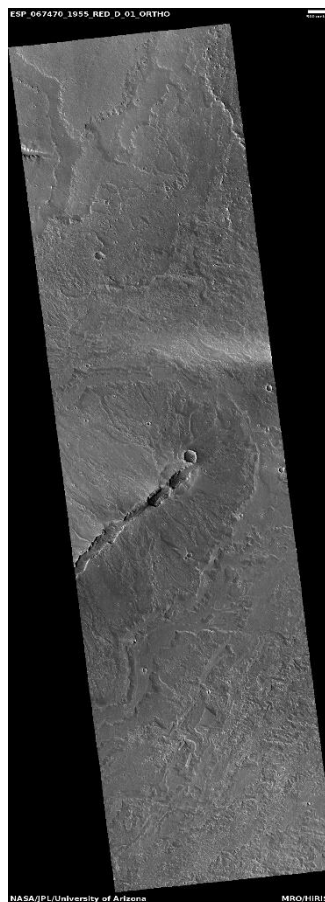
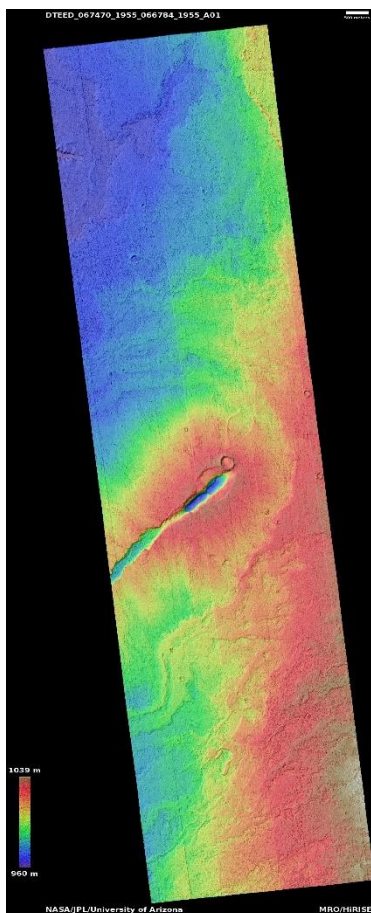
[https://www.uahirise.org/dtm/dtm.php?](https://www.uahirise.org/dtm/dtm.php?ID=ESP_052514_1825)

[ID=ESP_052514_1825](https://www.uahirise.org/dtm/dtm.php?ID=ESP_052514_1825)



Possible volcanic vent east of Olympus Mons

DTEED_067470_1955_066784_1955_A01



15.3°N 232.1°E

DTM Producer: UA | Kris Akers

Stereo Pair:

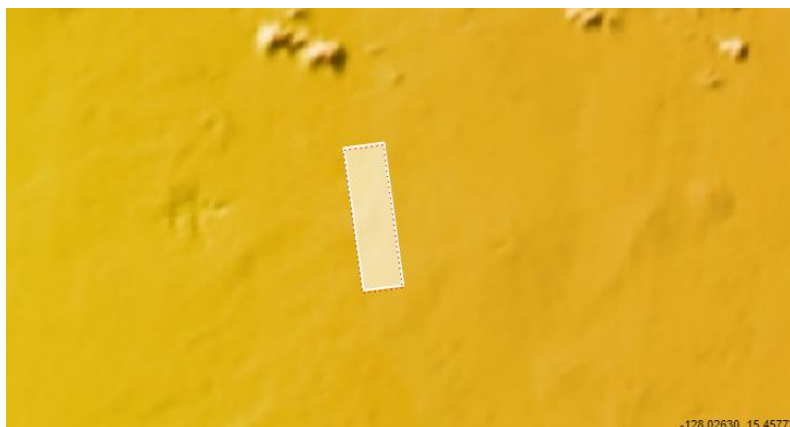
ESP_067470_1955

ESP_066784_1955

For more details about this DTM, visit:

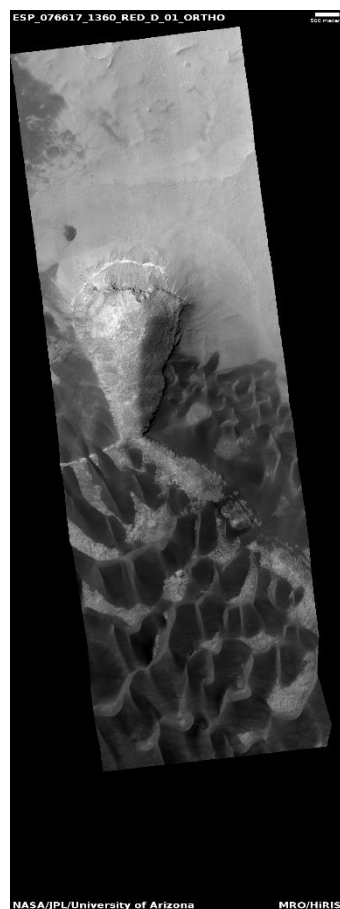
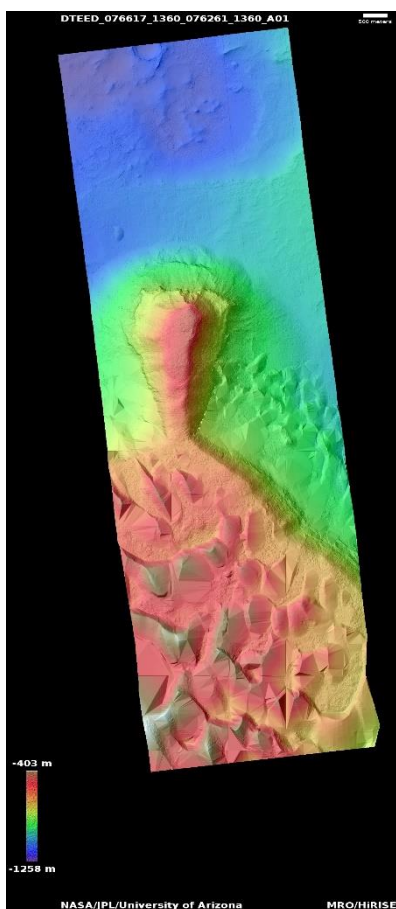
<https://www.uahirise.org/dtm/dtm.php?>

[ID=ESP_067470_1955](https://www.uahirise.org/dtm/dtm.php?ID=ESP_067470_1955)



Dunes and gullies

DTEED_076617_1360_076261_1360_A01



43.5°S 35.0°E

DTM Producer: UA | Kris Akers

Stereo Pair:

ESP_076617_1360

ESP_076261_1360

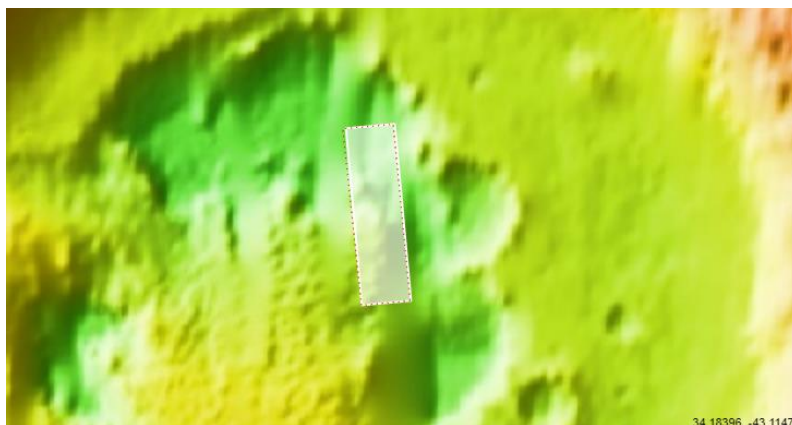
Orthos:

ESP_014401_1360

For more details about this DTM, visit:

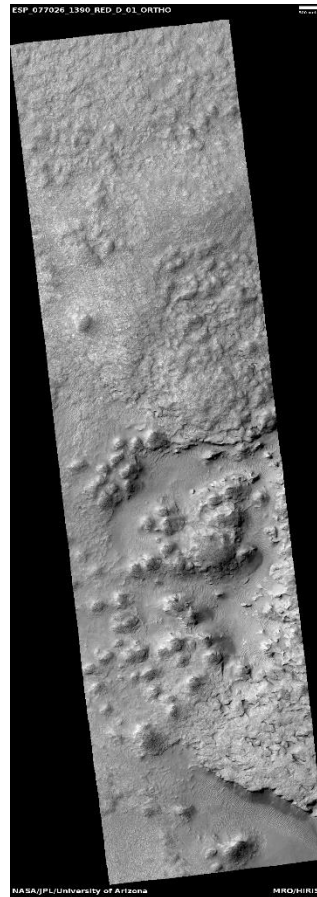
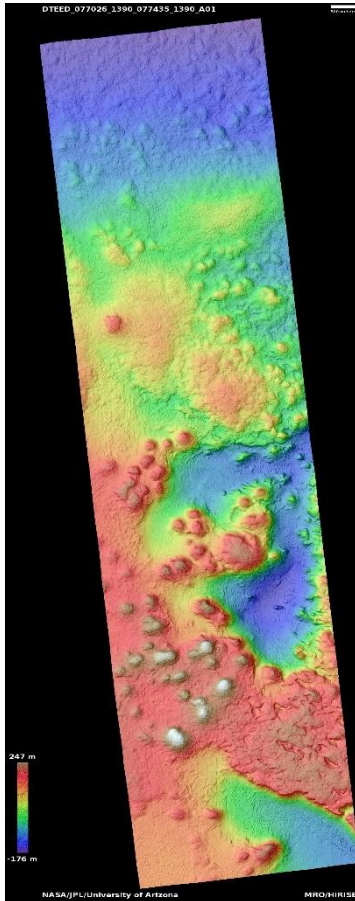
[https://www.uahirise.org/dtm/dtm.php?](https://www.uahirise.org/dtm/dtm.php?ID=ESP_076617_1360)

[ID=ESP_076617_1360](https://www.uahirise.org/dtm/dtm.php?ID=ESP_076617_1360)



Pit within crater north of Rabe Crater

DTEED_077026_1390_077435_1390_A01



40.8°S 34.1°E

DTM Producer: UA | Kris Akers

Stereo Pair:

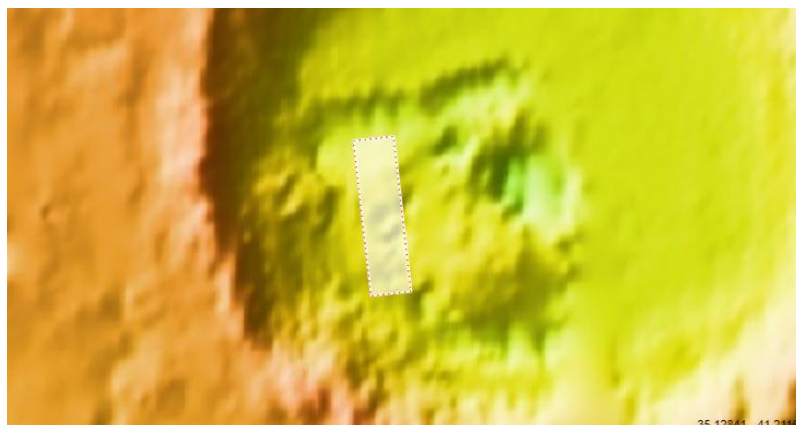
ESP_077026_1390

ESP_077435_1390

For more details about this DTM, visit:

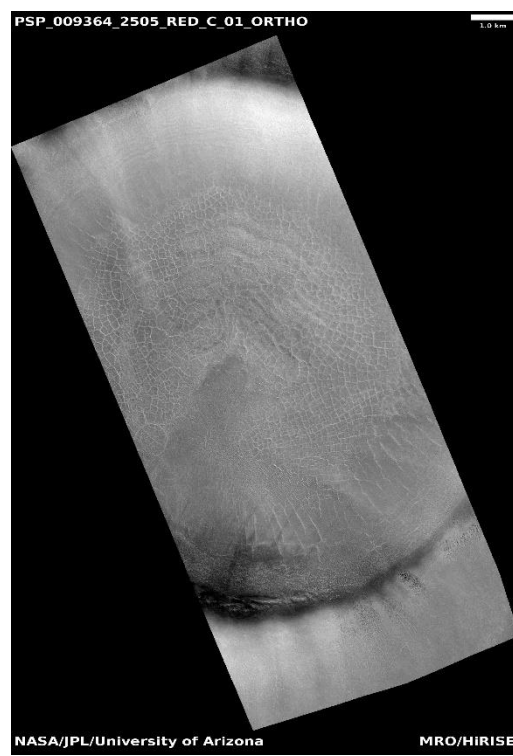
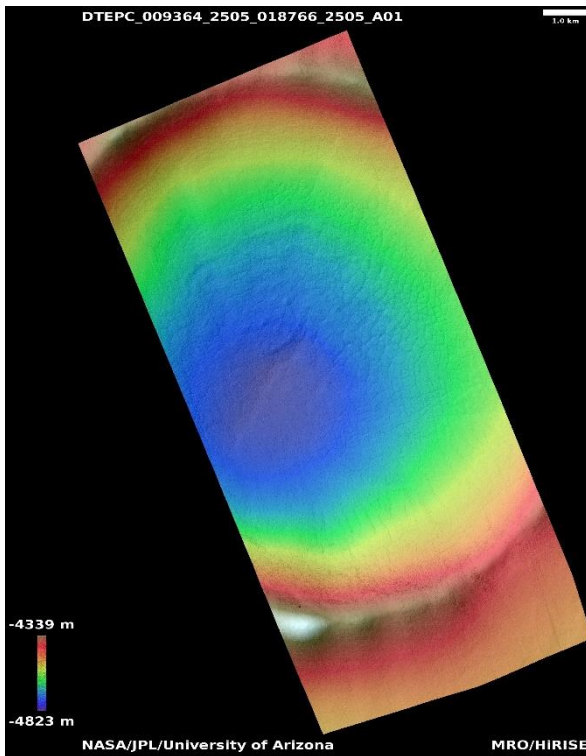
<https://www.uahirise.org/dtm/dtm.php?>

[ID=ESP_077026_1390](https://www.uahirise.org/dtm/dtm.php?ID=ESP_077026_1390)



Seasonal monitoring of polar crater with summer ice

DTEPC_009364_2505_018766_2505_A01



70.1°N 13.9°E

DTM Producer: UA | Kris Akers

Stereo Pair:

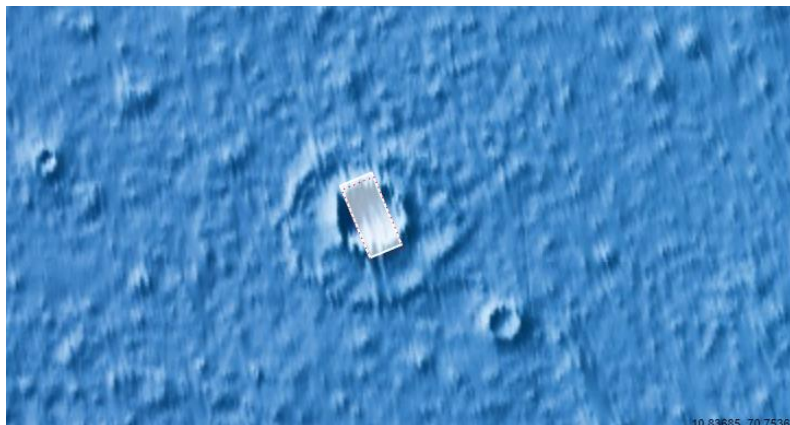
PSP_009364_2505

ESP_018766_2505

For more details about this DTM, visit:

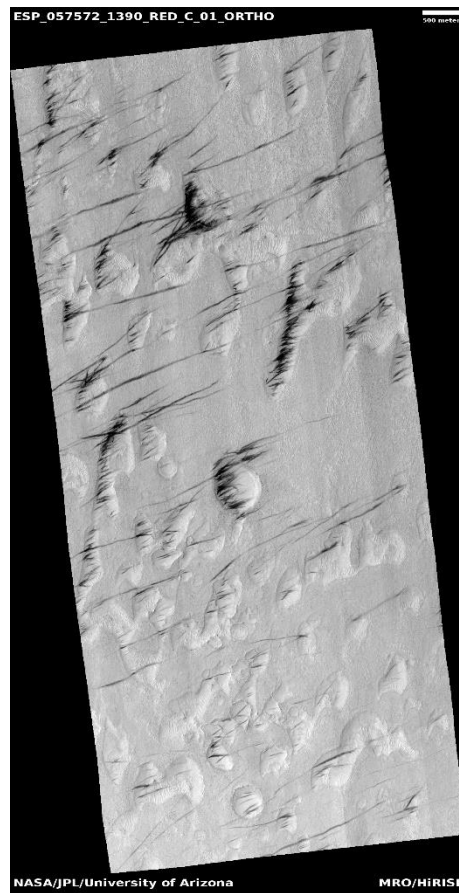
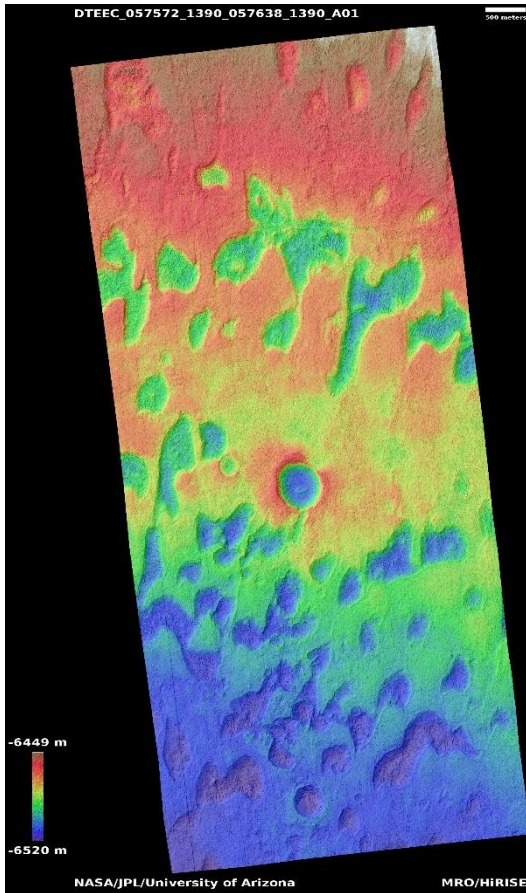
[https://www.uahirise.org/dtm/dtm.php?](https://www.uahirise.org/dtm/dtm.php?ID=PSP_009364_2505)

[ID=PSP_009364_2505](https://www.uahirise.org/dtm/dtm.php?ID=PSP_009364_2505)



Landforms in Hellas Planitia

DTEEC_057572_1390_057638_1390_A01



40.9°S 79.0°E

DTM Producer: UA | Branden M Gosse

Stereo Pair:

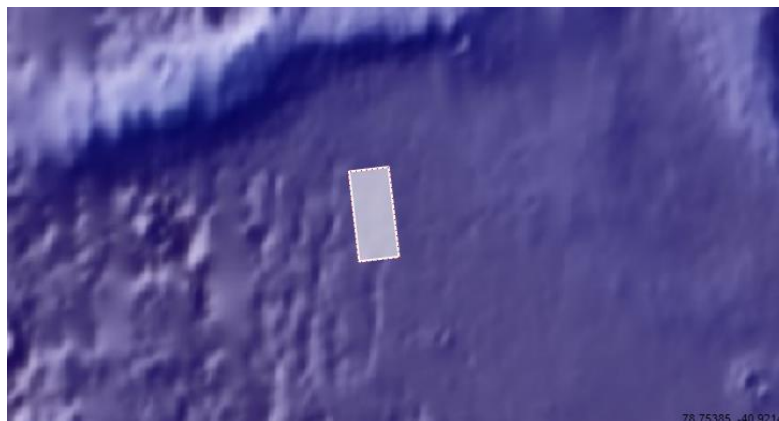
ESP_057572_1390

ESP_057638_1390

For more details about this DTM, visit:

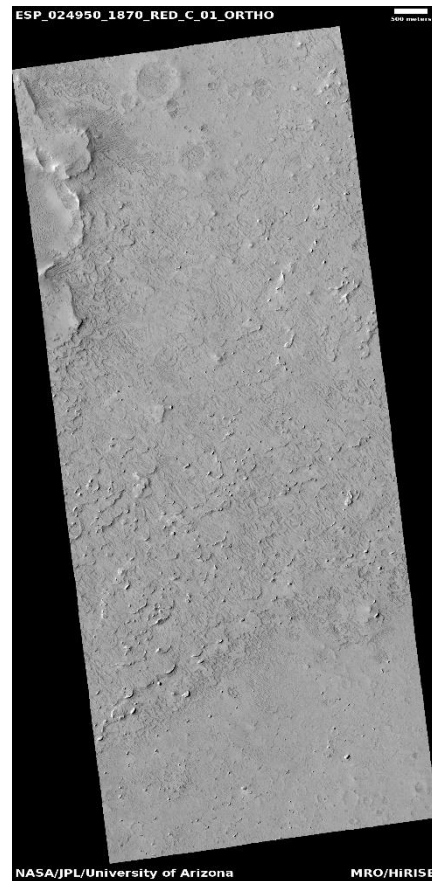
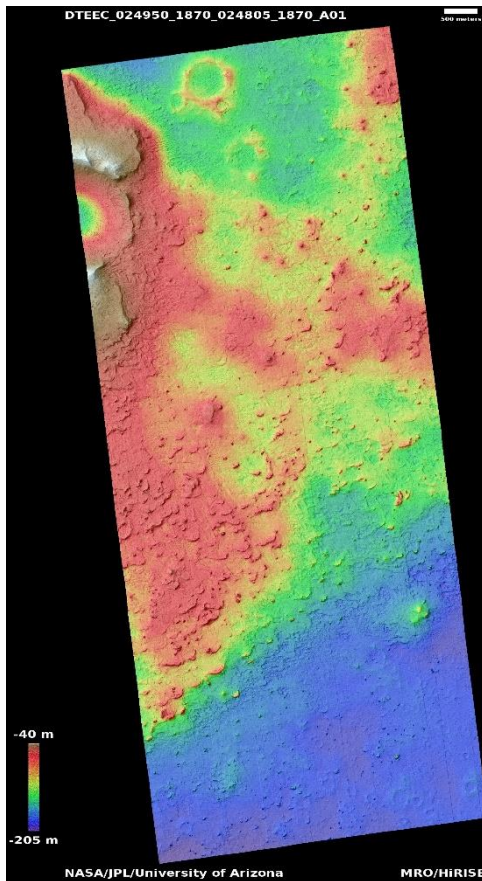
[https://www.uahirise.org/dtm/dtm.php?](https://www.uahirise.org/dtm/dtm.php?ID=ESP_057572_1390)

[ID=ESP_057572_1390](https://www.uahirise.org/dtm/dtm.php?ID=ESP_057572_1390)



Textured rock or mantling material in central Arabia Terra

DTEEC_024950_1870_024805_1870_A01



6.8°N 25.6°E

DTM Producer: UA | Kris Akers

Stereo Pair:

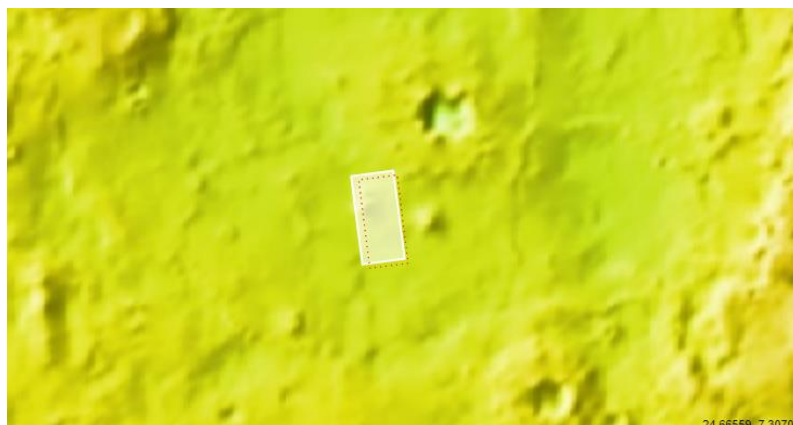
ESP_024950_1870

ESP_024805_1870

For more details about this DTM, visit:

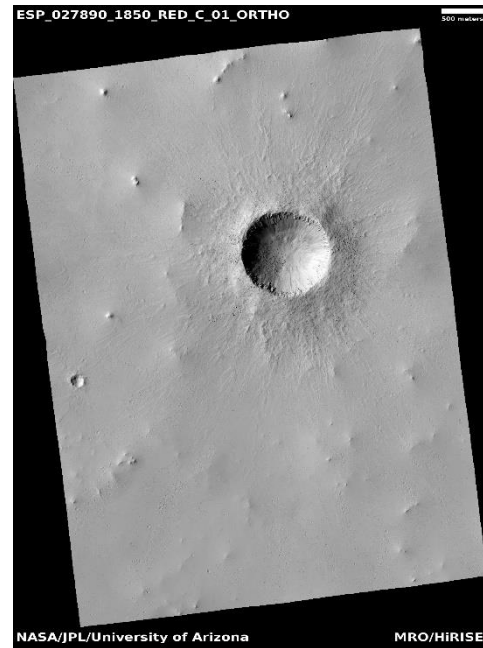
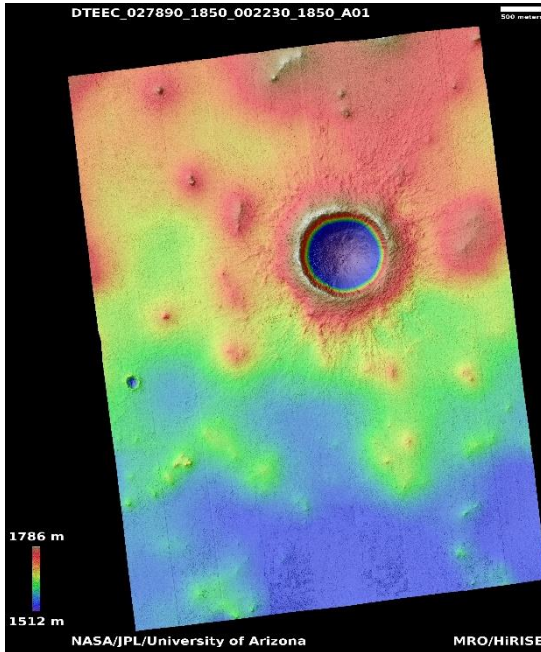
[https://www.uahirise.org/dtm/dtm.php?](https://www.uahirise.org/dtm/dtm.php?ID=ESP_024950_1870)

[ID=ESP_024950_1870](https://www.uahirise.org/dtm/dtm.php?ID=ESP_024950_1870)



Crater and extensive field of secondary craters seen in MOC image R15-02146

DTEEC_027890_1850_002230_1850_A01



4.7°N 46.2°E

DTM Producer: UA | Kris Akers

Stereo Pair:

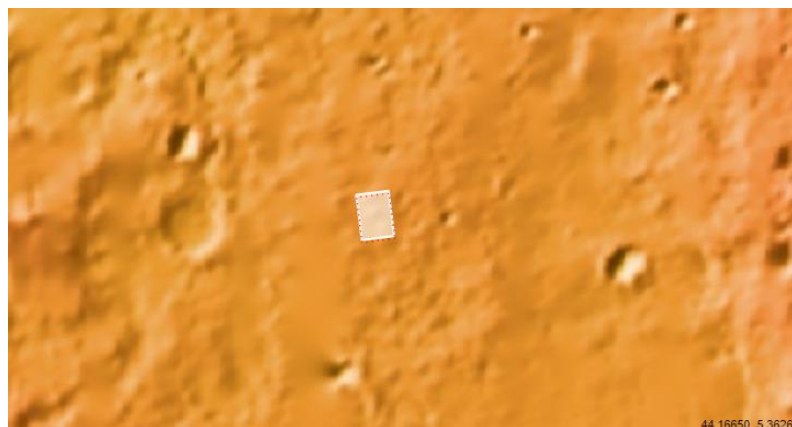
ESP_027890_1850

PSP_002230_1850

For more details about this DTM, visit:

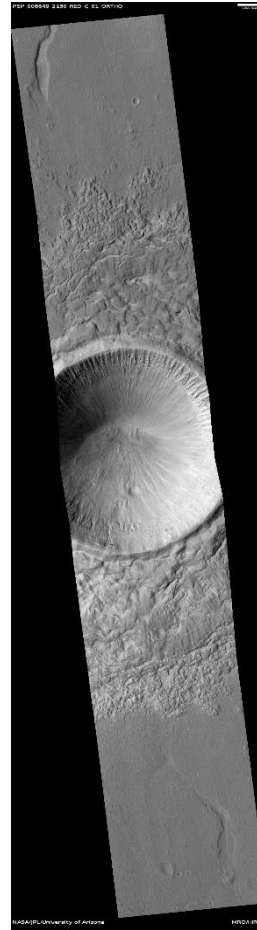
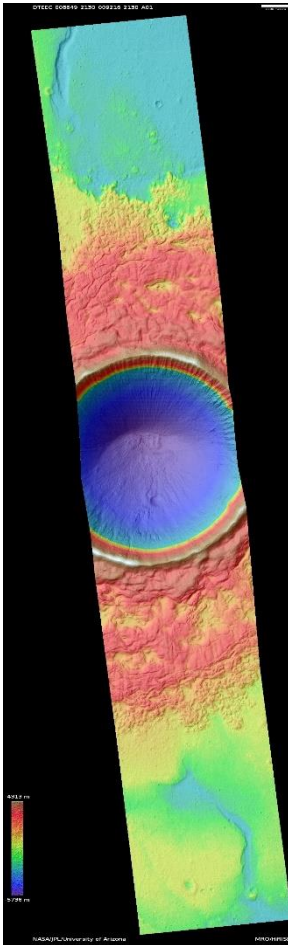
<https://www.uahirise.org/dtm/dtm.php?>

[ID=ESP_027890_1850](https://www.uahirise.org/dtm/dtm.php?ID=ESP_027890_1850)



Pristine pancake crater in northern plains

DTEEC_008649_2130_009216_2130_A01



32.5°N 104.5°E

DTM Producer: UA | Maximus X Cabrera

Stereo Pair:

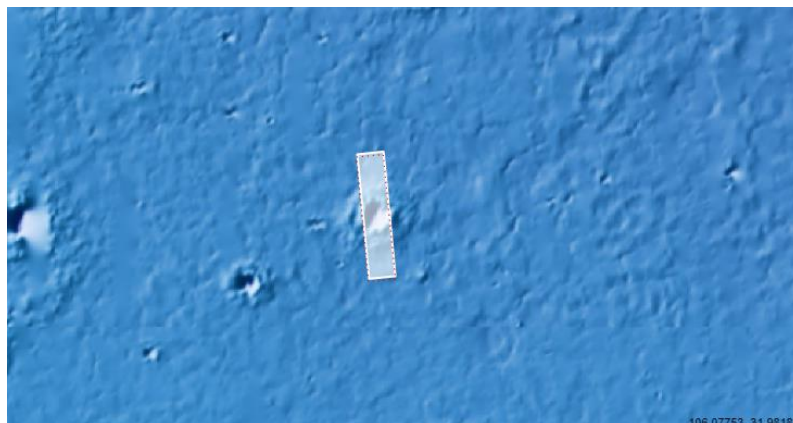
PSP_008649_2130

PSP_009216_2130

For more details about this DTM, visit:

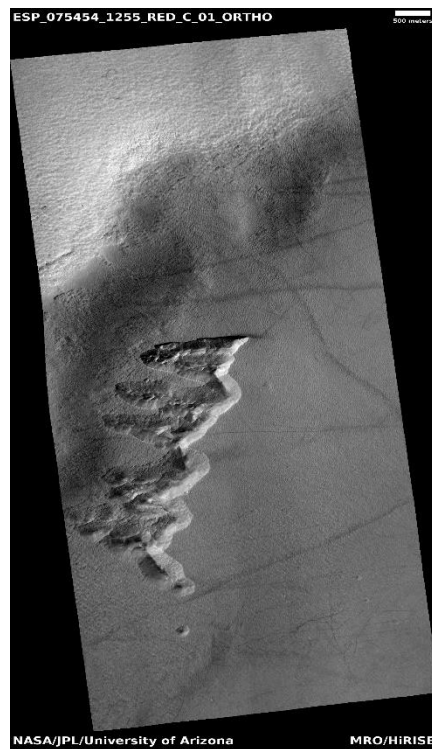
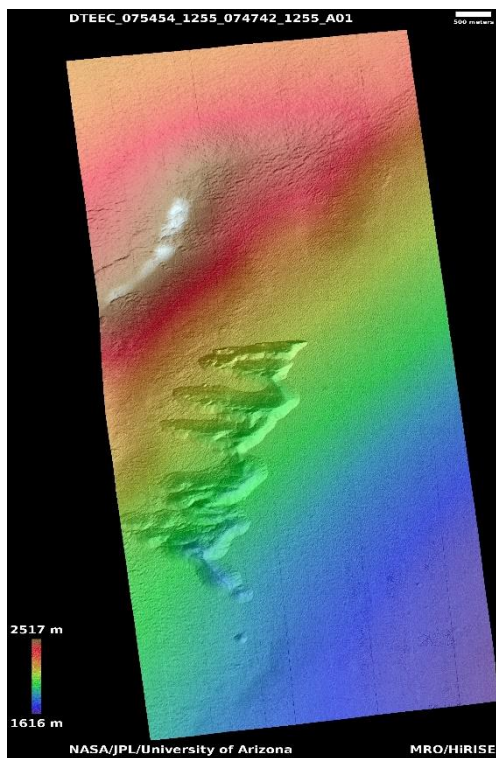
[https://www.uahirise.org/dtm/dtm.php?](https://www.uahirise.org/dtm/dtm.php?ID=PSP_008649_2130)

[ID=PSP_008649_2130](https://www.uahirise.org/dtm/dtm.php?ID=PSP_008649_2130)



Scarp monitoring

DTEEC_075454_1255_074742_1255_A01



54.4°S 105.8°E

DTM Producer: UA | Kris Akers

Stereo Pair:

ESP_075454_1255

ESP_074742_1255

Orthos:

ESP_066169_1255

For more details about this DTM, visit:
https://www.uahirise.org/dtm/dtm.php?ID=ESP_075454_1255

