



HIGH RESOLUTION IMAGING  
SCIENCE EXPERIMENT



# DTM PDS RELEASES

*May 2021*

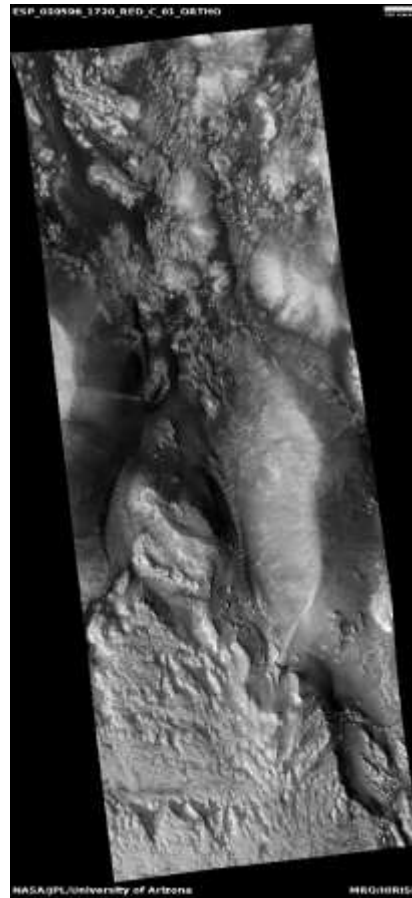
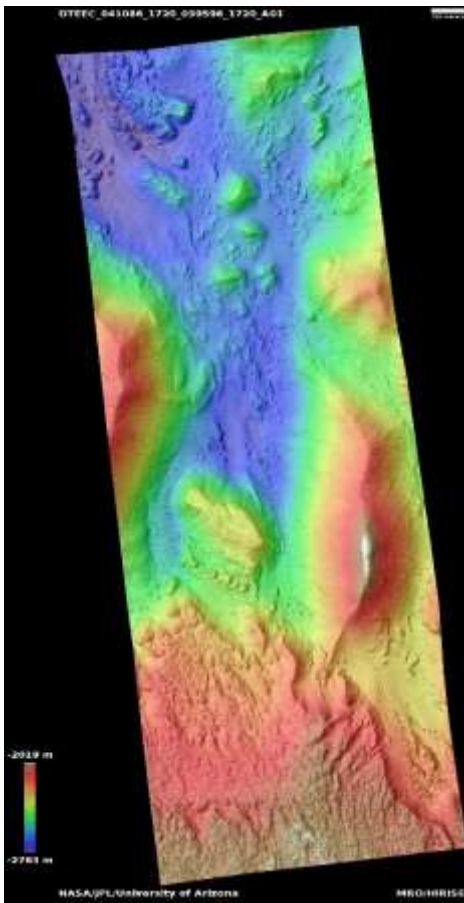
Edited by Kris Akers | UA

## DTMs Included this Month

|                                                |   |
|------------------------------------------------|---|
| Bedform change detection in Aeolis Mensae..... | 1 |
| Eroded bedrock in Terra Sirenum.....           | 2 |
| South polar region dubbed Inca City.....       | 3 |
| Mounds on north polar residual ice.....        | 4 |
| Feature on south polar layered deposits.....   | 5 |

# Bedform change detection in Aeolis Mensae

DTEEC\_041086\_1720\_039596\_1720\_A01



7.7°S 151.1°E

DTM Producer: UA | Shavonne Morin

Stereo Pair:

ESP\_041086\_1720

ESP\_039596\_1720

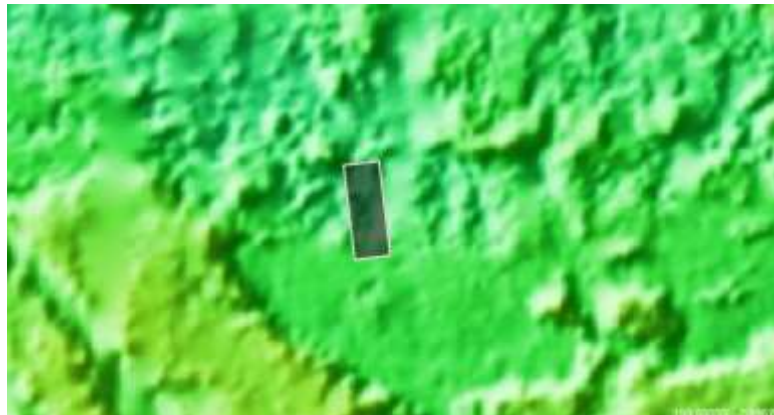
Extra Ortho:

PSP\_004125\_1720

For more details about this DTM, visit:

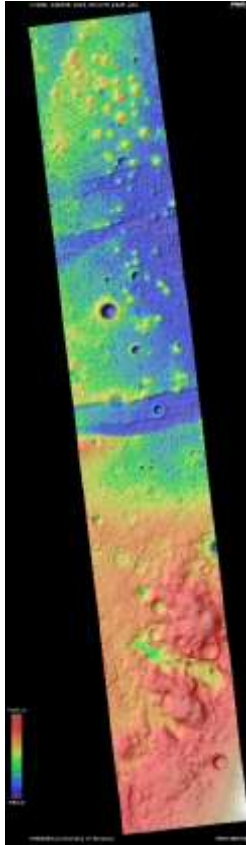
[https://www.uahirise.org/dtm/dtm.php?](https://www.uahirise.org/dtm/dtm.php?ID=ESP_041086_1720)

[ID=ESP\\_041086\\_1720](https://www.uahirise.org/dtm/dtm.php?ID=ESP_041086_1720)



# Eroded bedrock in Terra Sirenum

DTEED\_045238\_1525\_051976\_1525\_A01



27.1°S 203.4°E

DTM Producer: UA | Shavonne Morin

Stereo Pair:

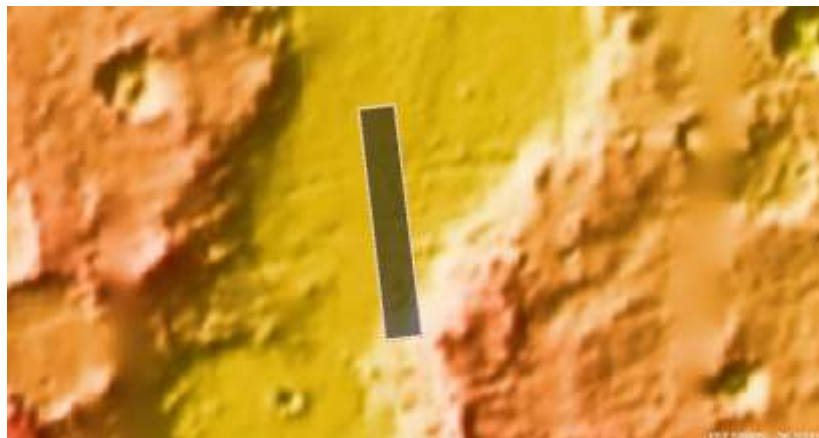
ESP\_045238\_1525

ESP\_051976\_1525

For more details about this DTM, visit:

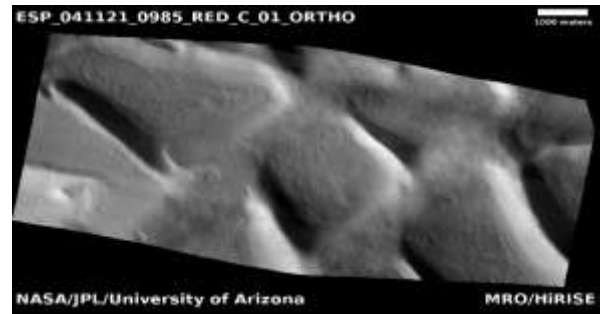
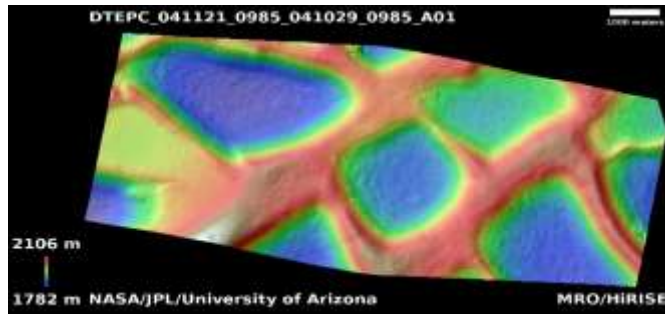
[https://www.uahirise.org/dtm/dtm.php?](https://www.uahirise.org/dtm/dtm.php?ID=ESP_045238_1525)

[ID=ESP\\_045238\\_1525](https://www.uahirise.org/dtm/dtm.php?ID=ESP_045238_1525)



# South polar region dubbed Inca City

DTEPC\_041121\_0985\_041029\_0985\_A01



81.4°S 295.9°E

DTM Producer: UA | Kris Akers

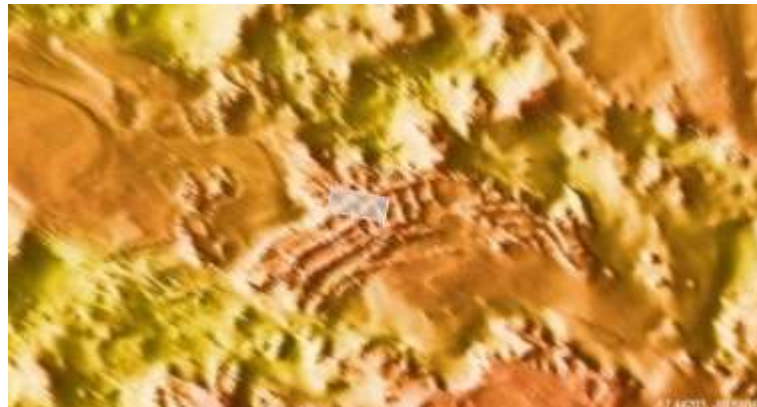
Stereo Pair:

ESP\_041121\_0985

ESP\_041029\_0985

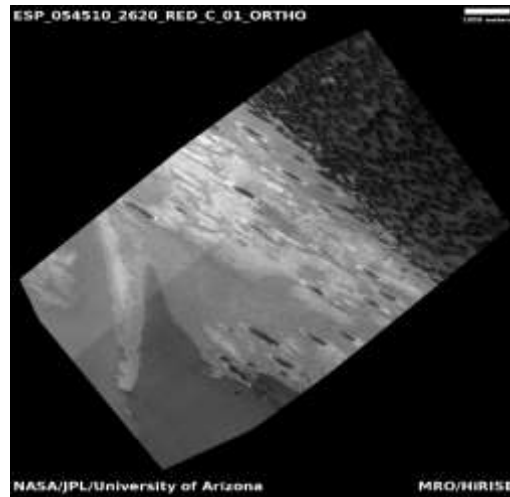
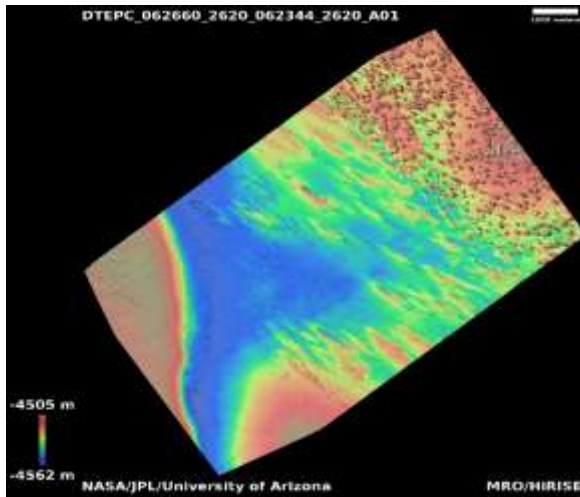
For more details about this DTM, visit:

[https://www.uahirise.org/dtm/dtm.php?ID=ESP\\_041121\\_0985](https://www.uahirise.org/dtm/dtm.php?ID=ESP_041121_0985)



# Mounds on north polar residual ice

DTEPC\_062660\_2620\_062344\_2620\_A01



81.7°N 109.7°E

DTM Producer: UA | Kris Akers

Stereo Pair:

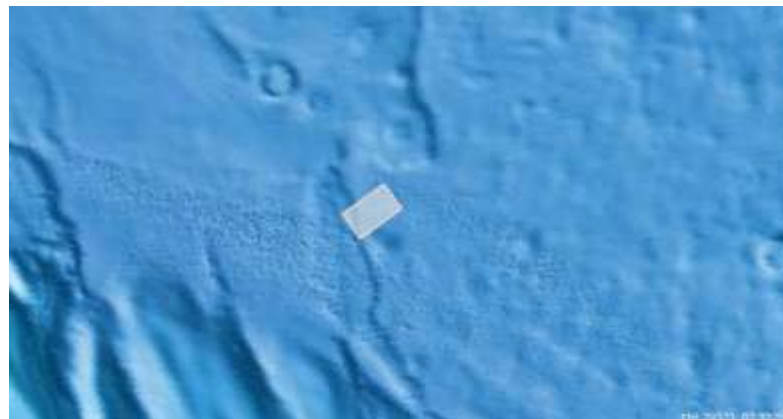
ESP\_062660\_2620

ESP\_062344\_2620

Extra Ortho:

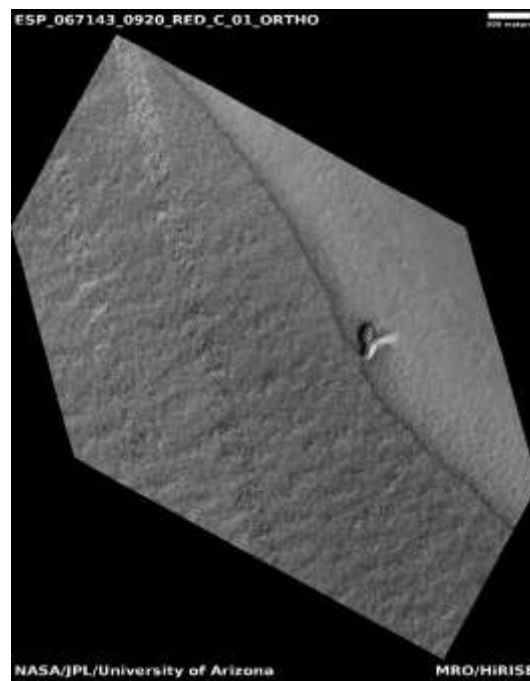
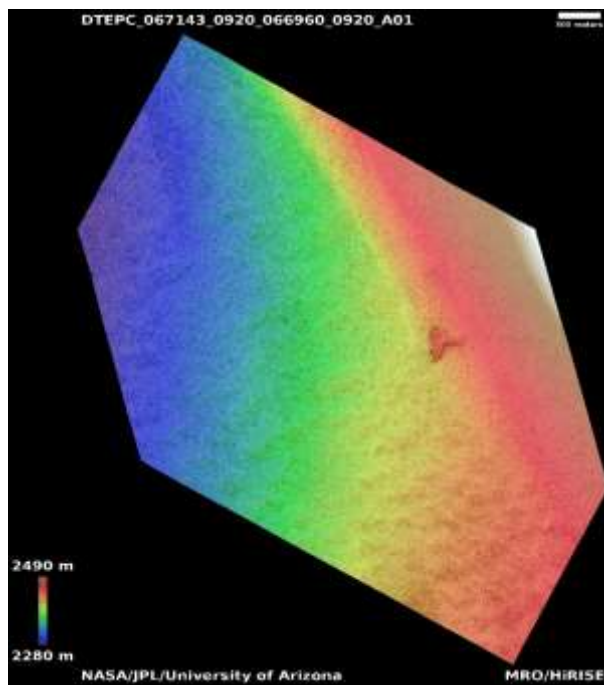
ESP\_054510\_2620

For more details about this DTM, visit:  
[https://www.uahirise.org/dtm/dtm.php?ID=ESP\\_062660\\_2620](https://www.uahirise.org/dtm/dtm.php?ID=ESP_062660_2620)



# Feature on south polar layered deposits

DTEPC\_067143\_0920\_066960\_0920\_A01



88.1°S 194.3°E

DTM Producer: UA | Kris Akers

Stereo Pair:

ESP\_067143\_0920

ESP\_066960\_0920

For more details about this DTM, visit:  
[https://www.uahirise.org/dtm/dtm.php?ID=ESP\\_067143\\_0920](https://www.uahirise.org/dtm/dtm.php?ID=ESP_067143_0920)

