



HIGH RESOLUTION IMAGING SCIENCE EXPERIMENT



DTM PDS RELEASES

March 2023

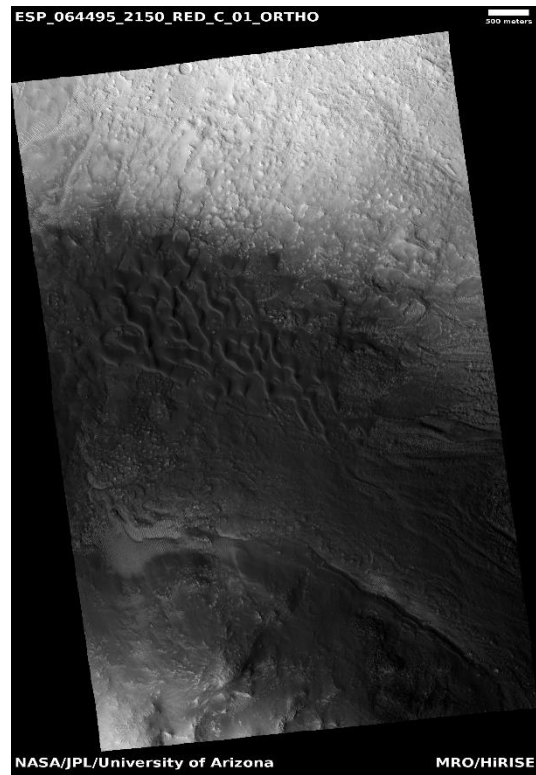
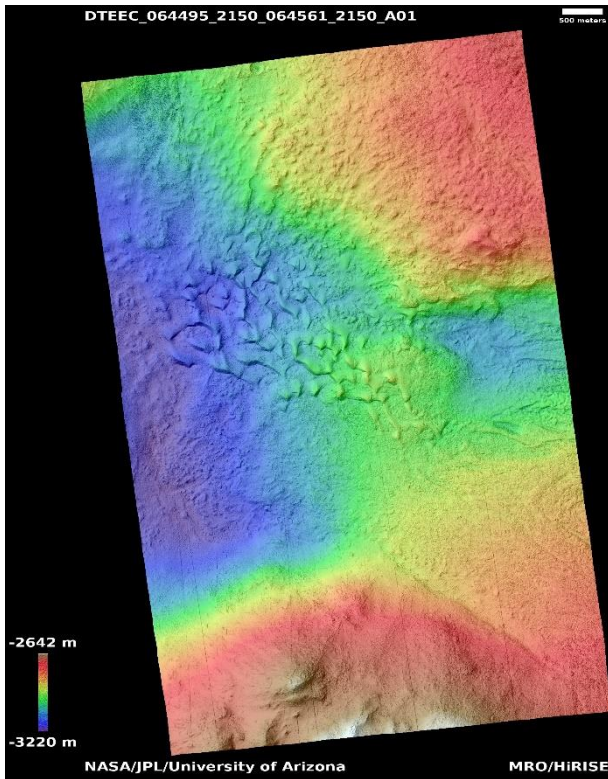
Edited by Kris Akers | UA

DTMs Included this Month

Nilosyrtis Mensae dunes.....	1
Candidate recent impact site.....	2
Scarp monitoring.....	3
Bright patches in Terra Sirenum.....	4
Dark layers in Arabia crater.....	5
Bright patches in Terra Sirenum.....	6
Possible vent in Ceraunius Fossae.....	7
USGS dune database entry number 3525-631.....	8
South polar residual cap.....	9

Nilosyrtis Mensae dunes

DTEEC_064495_2150_064561_2150_A01



34.5°N 65.8°E

DTM Producer: UA | Kris Akers

Stereo Pair:

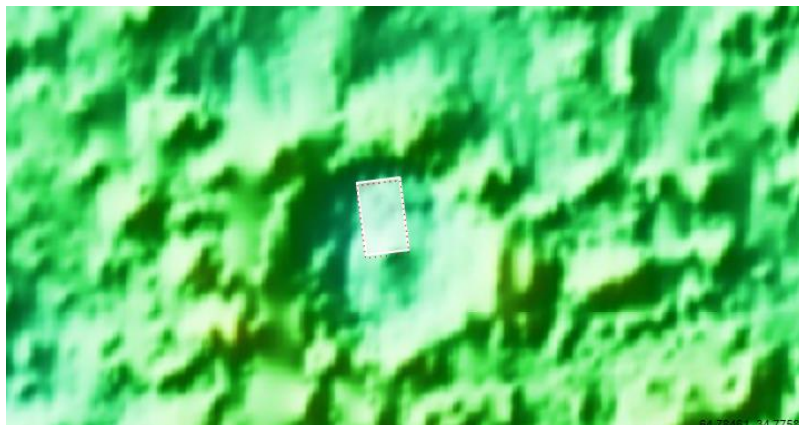
ESP_064495_2150

ESP_064561_2150

For more details about this DTM, visit:

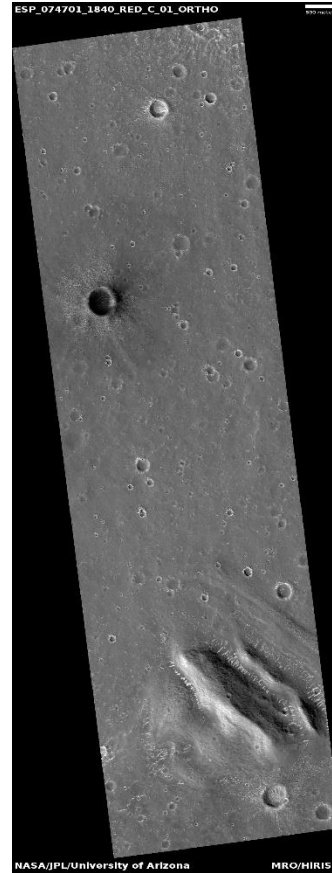
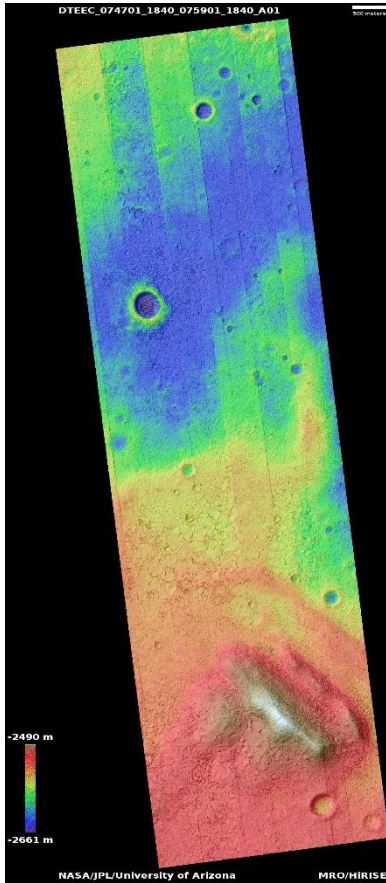
[https://www.uahirise.org/dtm/dtm.php?](https://www.uahirise.org/dtm/dtm.php?ID=ESP_064495_2150)

[ID=ESP_064495_2150](https://www.uahirise.org/dtm/dtm.php?ID=ESP_064495_2150)



Candidate recent impact site

DTEEC_074701_1840_075901_1840_A01



3.8°N 135.1°E

DTM Producer: UA | Maximus X Cabrera

Stereo Pair:

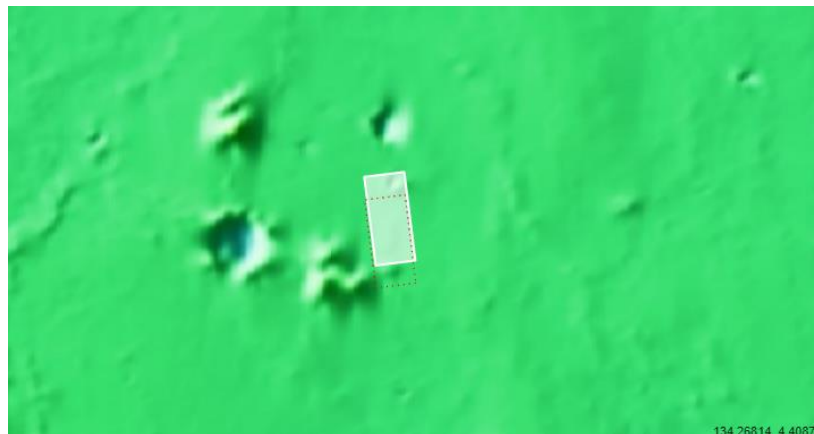
ESP_074701_1840

ESP_075901_1840

For more details about this DTM, visit:

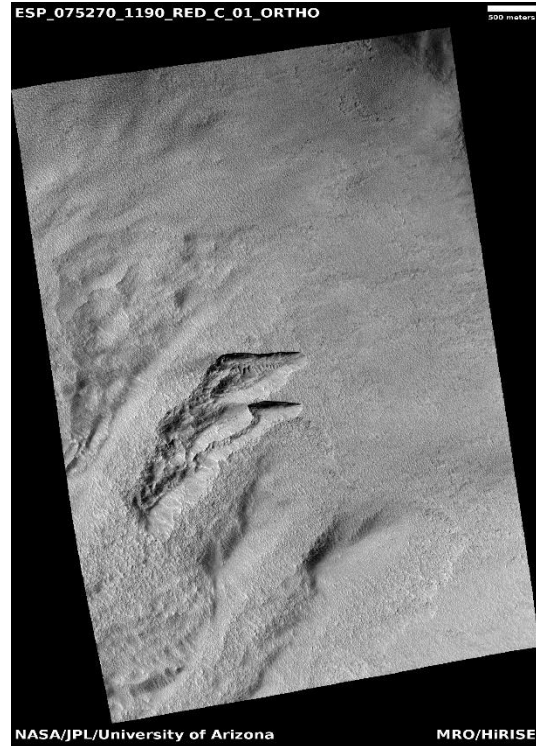
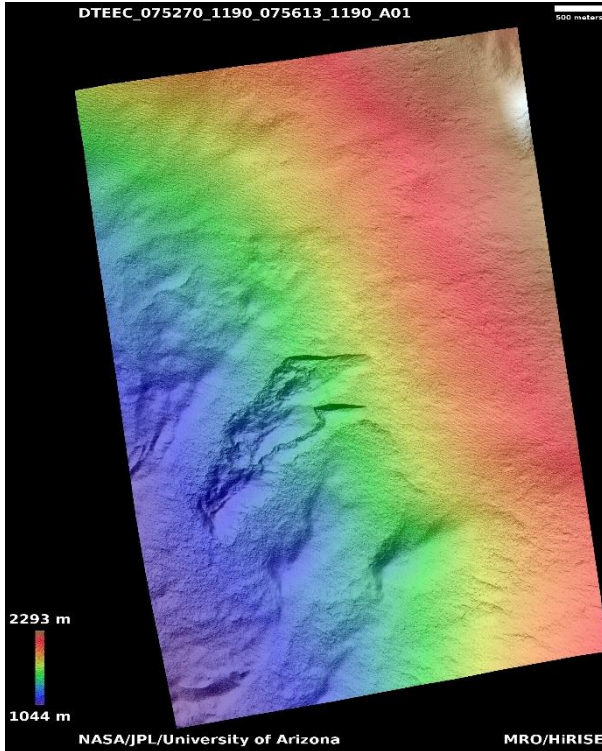
[https://www.uahirise.org/dtm/dtm.php?](https://www.uahirise.org/dtm/dtm.php?ID=ESP_074701_1840)

[ID=ESP_074701_1840](https://www.uahirise.org/dtm/dtm.php?ID=ESP_074701_1840)



Scarp monitoring

DTEEC_075270_1190_075613_1190_A01



60.8°S 92.1°E

DTM Producer: UA | Kris Akers

Stereo Pair:

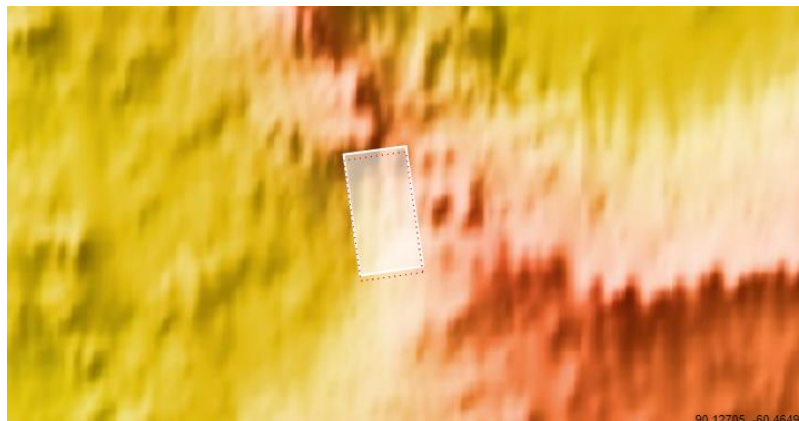
ESP_075270_1190

ESP_075613_1190

Orthos:

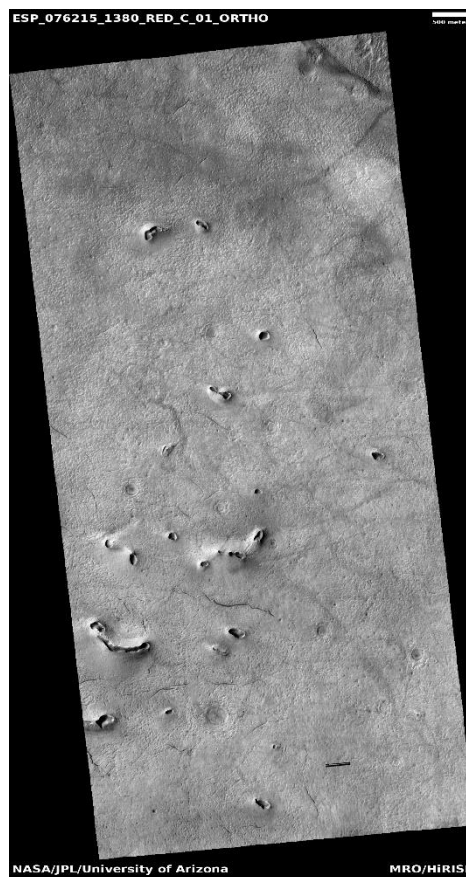
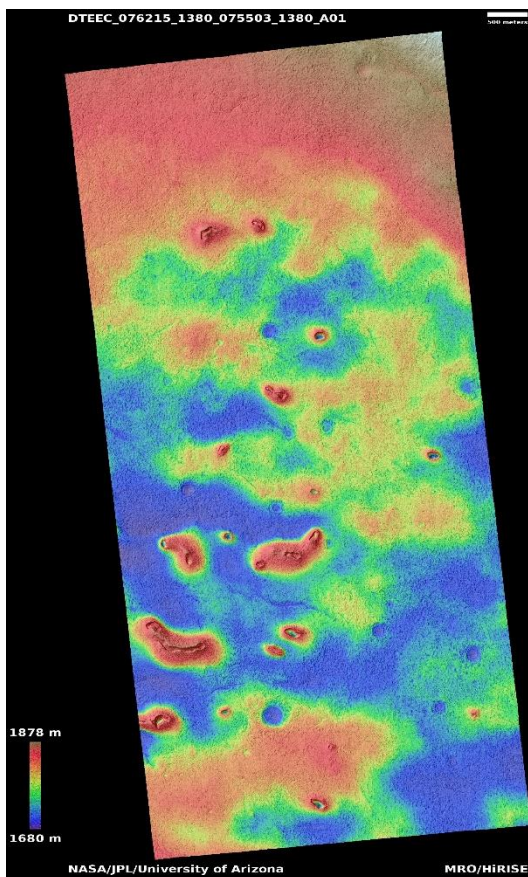
ESP_065853_1190

For more details about this DTM, visit:
https://www.uahirise.org/dtm/dtm.php?ID=ESP_075270_1190



Bright patches in Terra Sirenum

DTEEC_076215_1380_075503_1380_A01



41.6°S 207.1°E

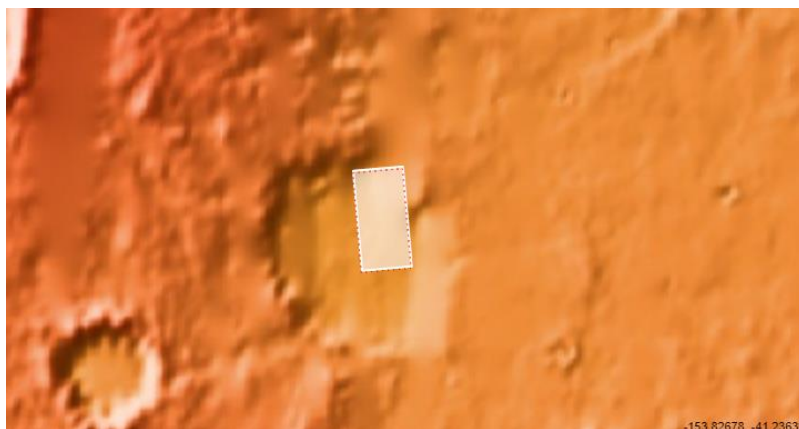
DTM Producer: UA | Kris Akers

Stereo Pair:

ESP_076215_1380

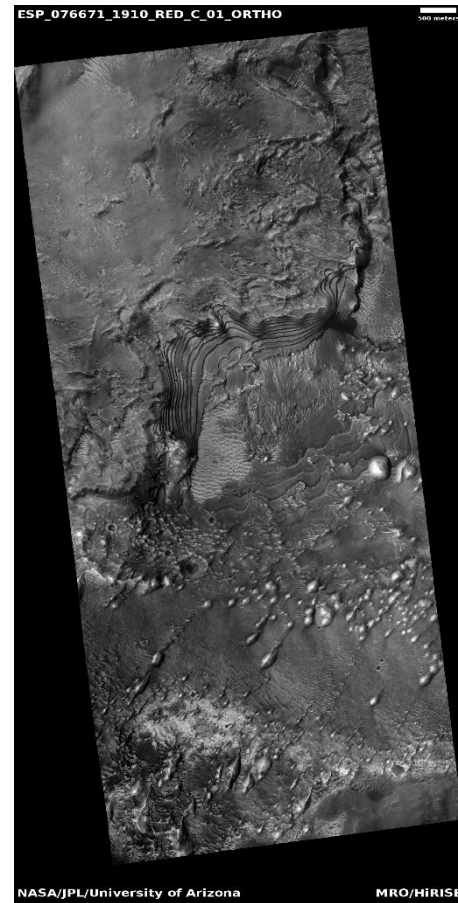
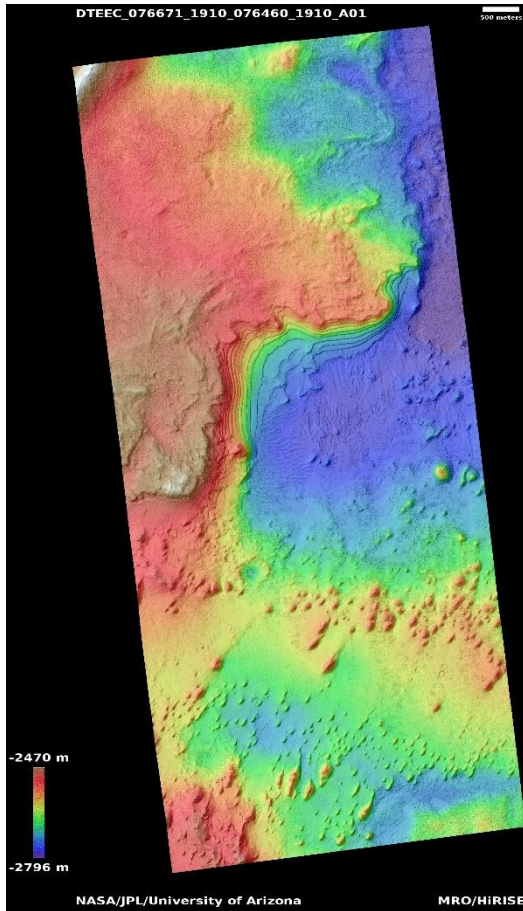
ESP_075503_1380

For more details about this DTM, visit:
https://www.uahirise.org/dtm/dtm.php?ID=ESP_076215_1380



Dark layers in Arabia crater

DTEEC_076671_1910_076460_1910_A01



10.7°N 355.5°E

DTM Producer: UA | Kris Akers

Stereo Pair:

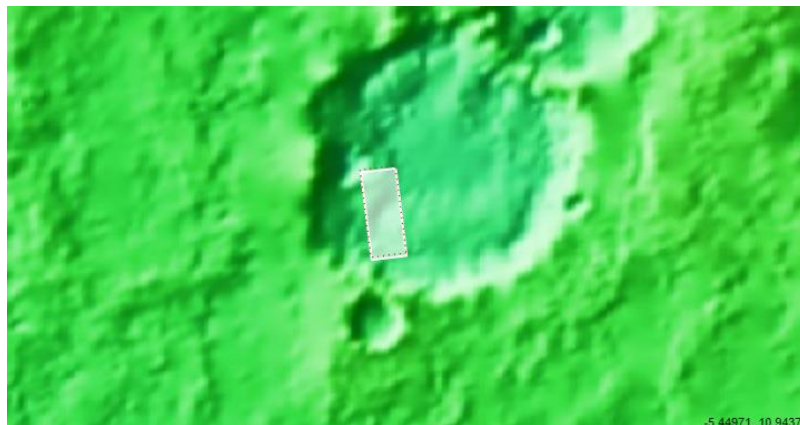
ESP_076671_1910

ESP_076460_1910

For more details about this DTM, visit:

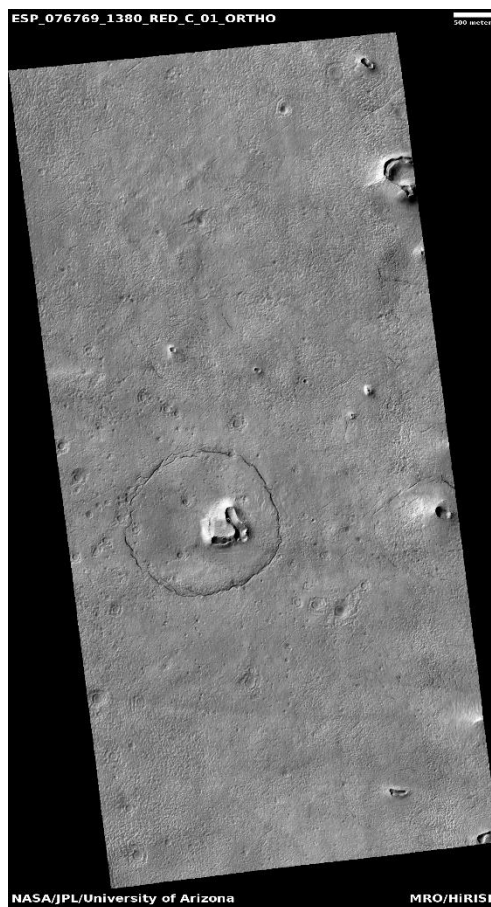
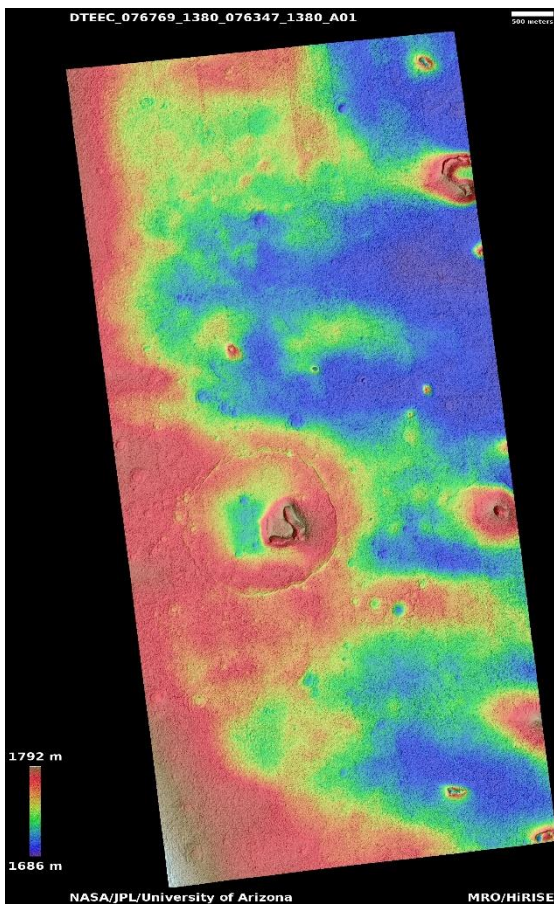
<https://www.uahirise.org/dtm/dtm.php?>

[ID=ESP_076671_1910](https://www.uahirise.org/dtm/dtm.php?ID=ESP_076671_1910)



Bright patches in Terra Sirenum

DTEEC_076769_1380_076347_1380_A01



41.6°S 207.0°E

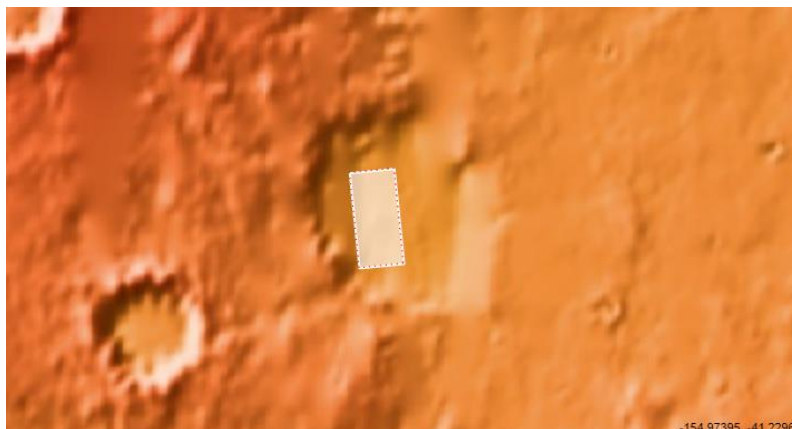
DTM Producer: UA | Kris Akers

Stereo Pair:

ESP_076769_1380

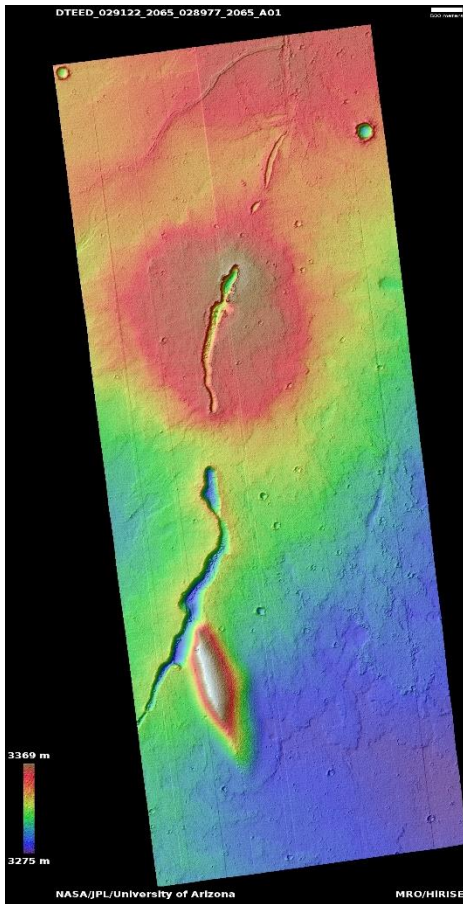
ESP_076347_1380

For more details about this DTM, visit:
https://www.uahirise.org/dtm/dtm.php?ID=ESP_076769_1380



Possible vent in Ceraunius Fossae

DTEED_029122_2065_028977_2065_A01



26.3°N 249.6°E

DTM Producer: UA | Kris Akers

Stereo Pair:

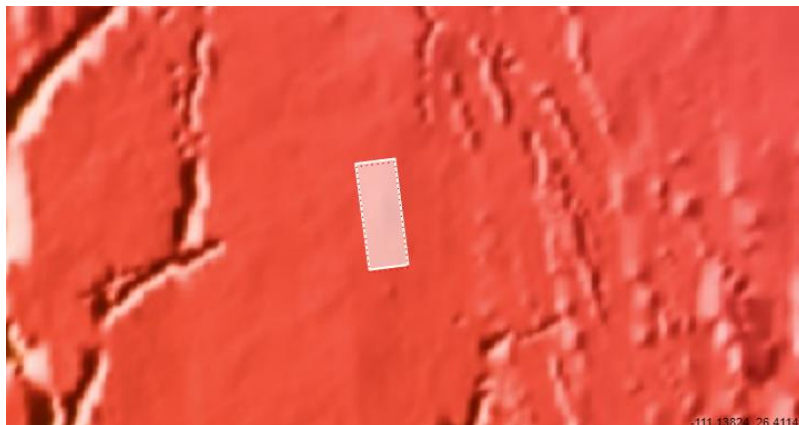
ESP_029122_2065

ESP_028977_2065

For more details about this DTM, visit:

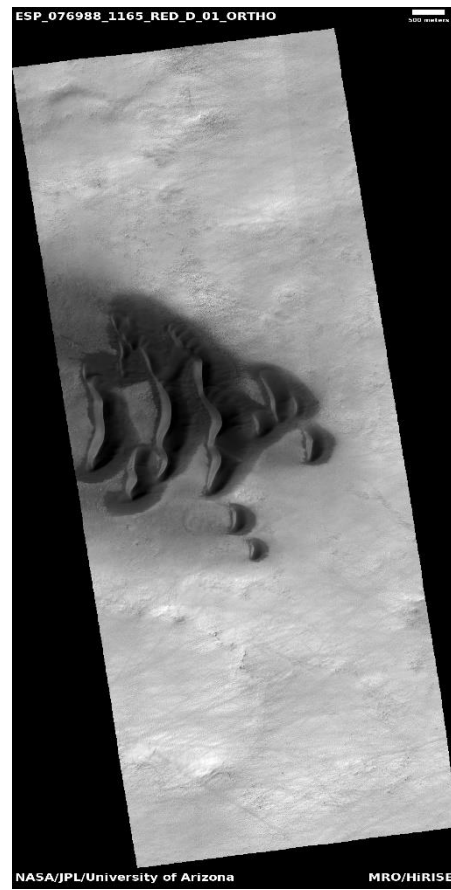
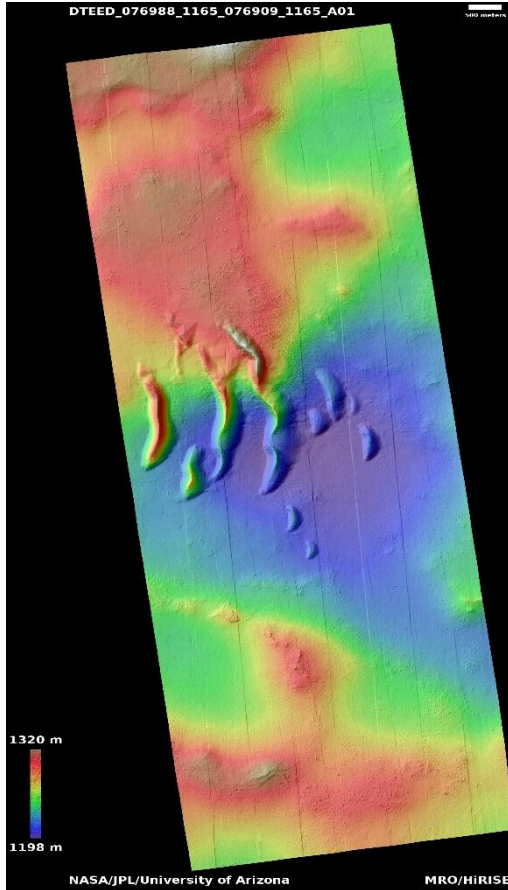
[https://www.uahirise.org/dtm/dtm.php?](https://www.uahirise.org/dtm/dtm.php?ID=ESP_029122_2065)

[ID=ESP_029122_2065](https://www.uahirise.org/dtm/dtm.php?ID=ESP_029122_2065)



USGS dune database entry number 3525-631

DTEED_076988_1165_076909_1165_A01



63.1°S 352.5°E

DTM Producer: UA | Kris Akers

Stereo Pair:

ESP_076988_1165

ESP_076909_1165

Orthos:

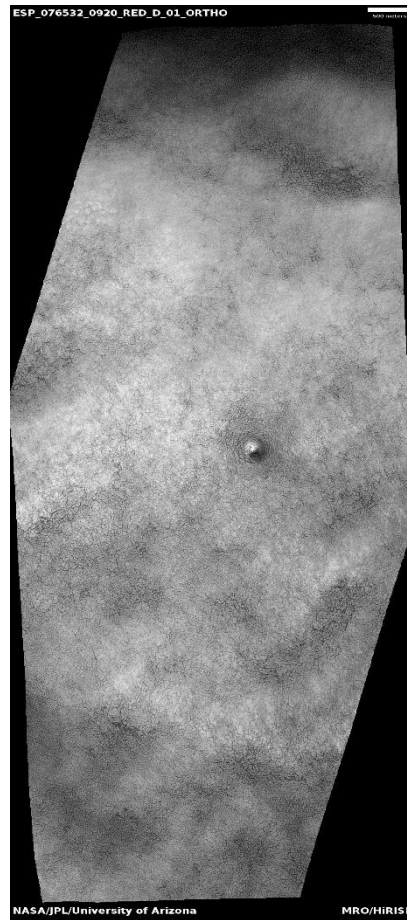
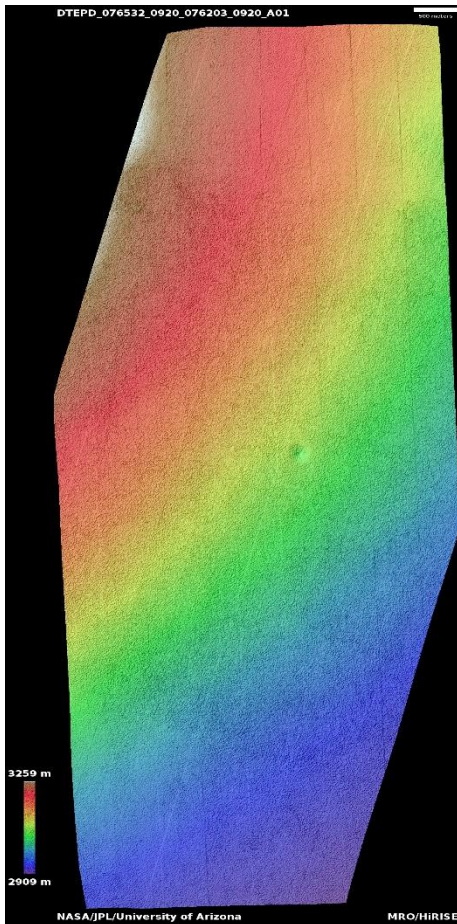
ESP_049439_1165

For more details about this DTM, visit:
https://www.uahirise.org/dtm/dtm.php?ID=ESP_076988_1165



South polar residual cap

DTEPD_076532_0920_076203_0920_A01



87.9°S 246.2°E
DTM Producer: UA | Kris Akers
Stereo Pair:
ESP_076532_0920
ESP_076203_0920

For more details about this DTM, visit:
https://www.uahirise.org/dtm/dtm.php?ID=ESP_076532_0920

