



**HIGH RESOLUTION IMAGING
SCIENCE EXPERIMENT**



DTM PDS RELEASES

March 2019

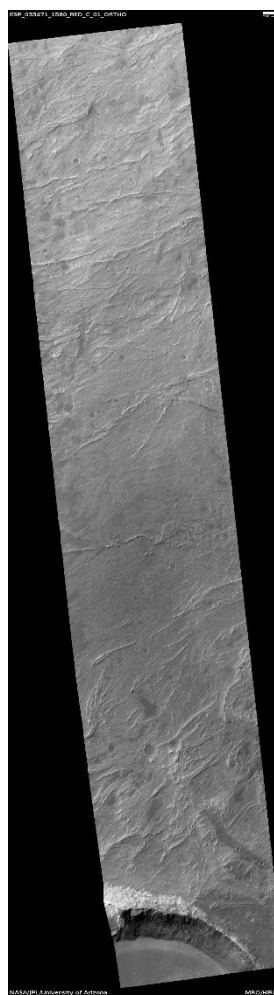
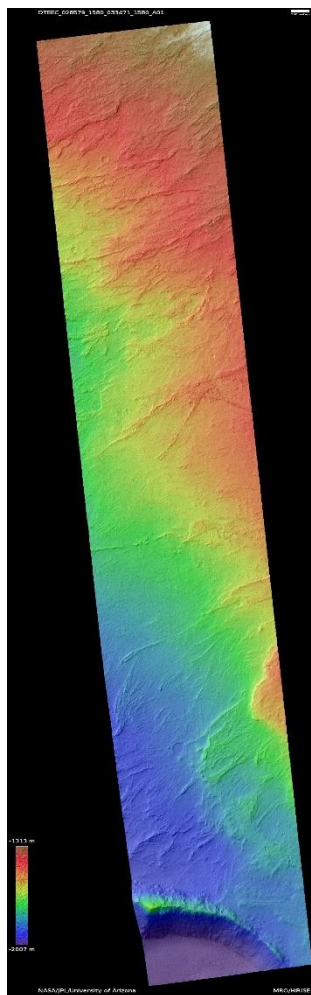
Designed by Erin Clark and Nicholas Porter | Edited by Nicholas Porter | UA

DTMs Included this Month

ALLUVIAL FAN SURFACE WITH INVERTED CHANNELS.....	1
TERRA CIMMERIA INTRA-CRATER BARCHAN DUNE CHANGES.....	2
ALLUVIAL FAN IN FAR WESTERN TYRRHENA TERRA	3
NORTH POLAR LINEAR DUNE SOURCE CHANGES	4
HOLDEN CRATER DUNE TOPOGRAPHY	5

Alluvial Fan Surface with Inverted Channels

DTEEC_028579_1580_033471_1580_A01



20°S 320°E

DTM Producer: UA – Kris Amanda Akers

Stereo Pair:

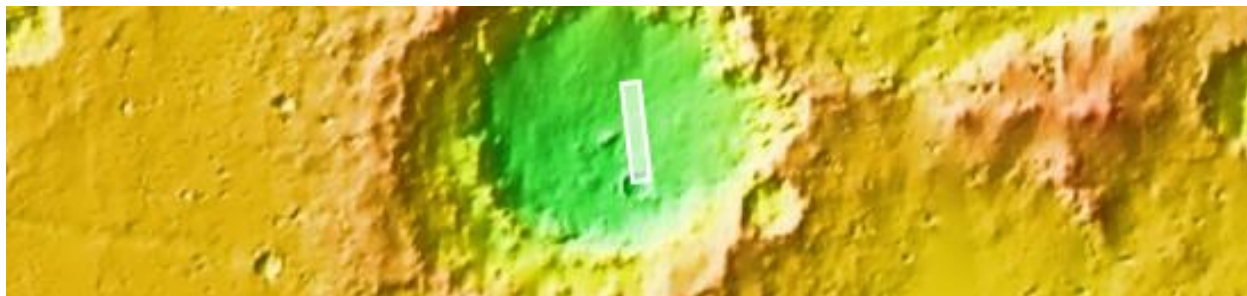
ESP_028579_1580

ESP_033471_1580

For more details about this DTM, visit:

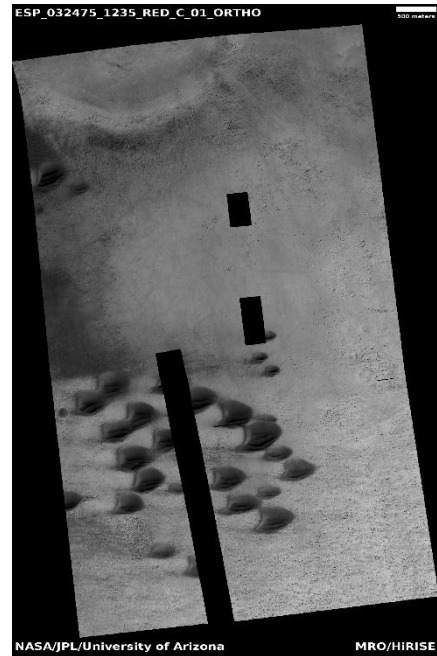
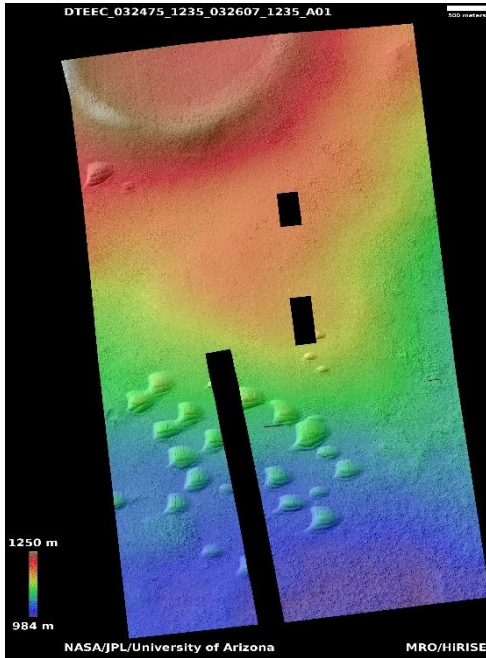
[https://www.uahirise.org/dtm/dtm.php?](https://www.uahirise.org/dtm/dtm.php?ID=ESP_028579_1580)

[ID=ESP_028579_1580](https://www.uahirise.org/dtm/dtm.php?ID=ESP_028579_1580)



Terra Cimmeria intra-crater barchan dune changes

DTEEC_032475_1235_032607_1235_A01



55°S 157°E
DTM Producer: UA – Cody Cushing
Stereo Pair:
ESP_032475_1235
ESP_032607_1235

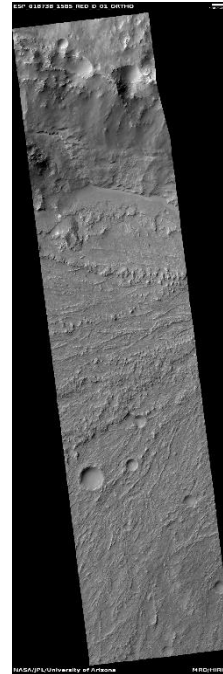
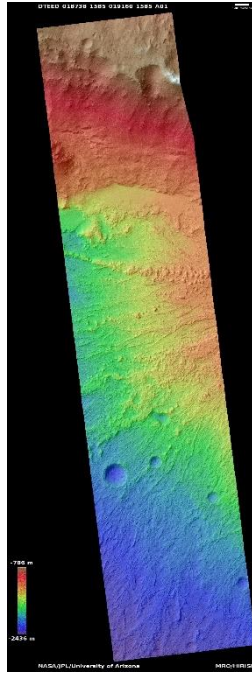
Additional Orthos:
PSP_006248_1235
ESP_042075_1235

For more details about this DTM, visit:
https://www.uahirise.org/dtm/dtm.php?ID=ESP_032475_1235



Alluvial fan in far western Tyrrhena Terra

DTEED_018738_1585_019160_1585_A01



20°S 67°E

DTM Producer: UA – Kris Amanda Akers

Stereo Pair:

ESP_018738_1585

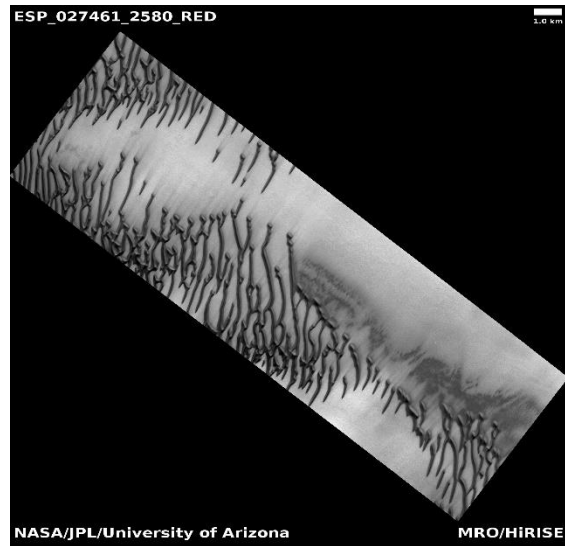
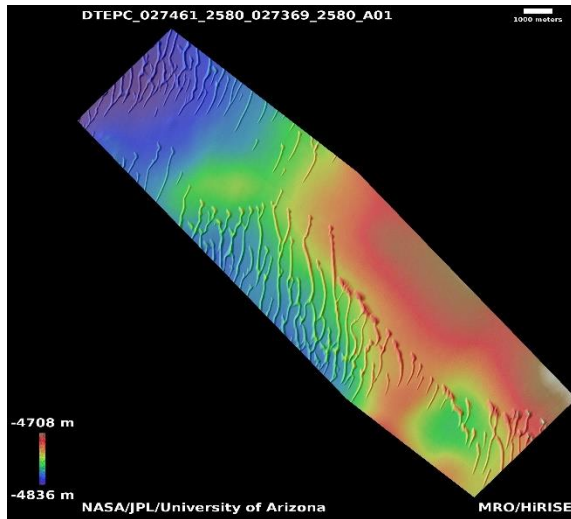
ESP_019160_1585

For more details about this DTM, visit:
https://www.uahirise.org/dtm/dtm.php?ID=ESP_018738_1585



North polar linear dune source changes

DTEPC_027461_2580_027369_2580_A01



90°S 0°E

DTM Producer: UA – Nicholas Porter

Stereo Pair:

ESP_027461_2580

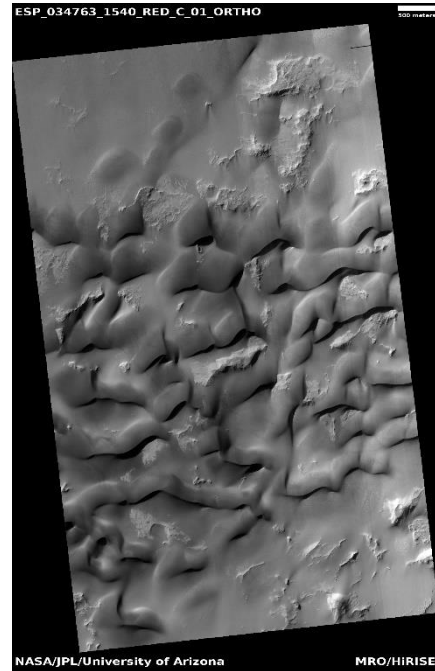
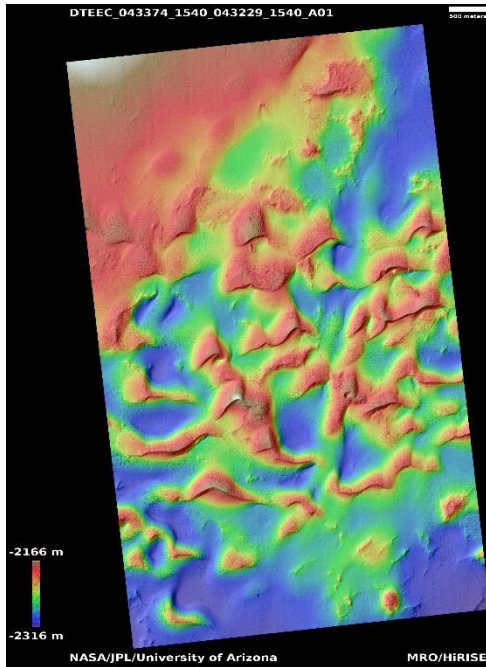
ESP_027369_2580

For more details about this DTM, visit:
https://www.uahirise.org/dtm/dtm.php?ID=ESP_027461_2580



Holden Crater Dune Topography

DTEEC_043374_1540_043229_1540_A01



25°S 326°E
DTM Producer: UA – Michael Berube
Stereo Pair:
ESP_043374_1540
ESP_043229_1540

Additional Orthos:
ESP_034763_1540

For more details about this DTM, visit:
https://www.uahirise.org/dtm/dtm.php?ID=ESP_043374_1540

