



HIGH RESOLUTION IMAGING SCIENCE EXPERIMENT



DTM PDS RELEASES

June 2023

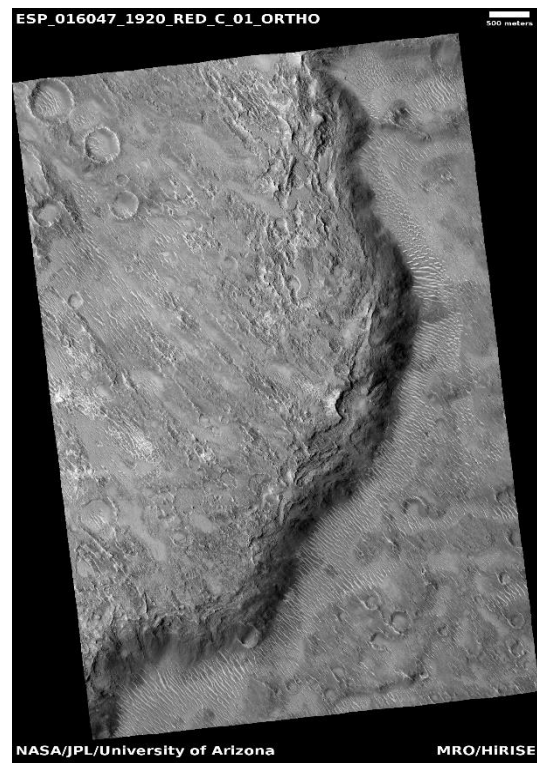
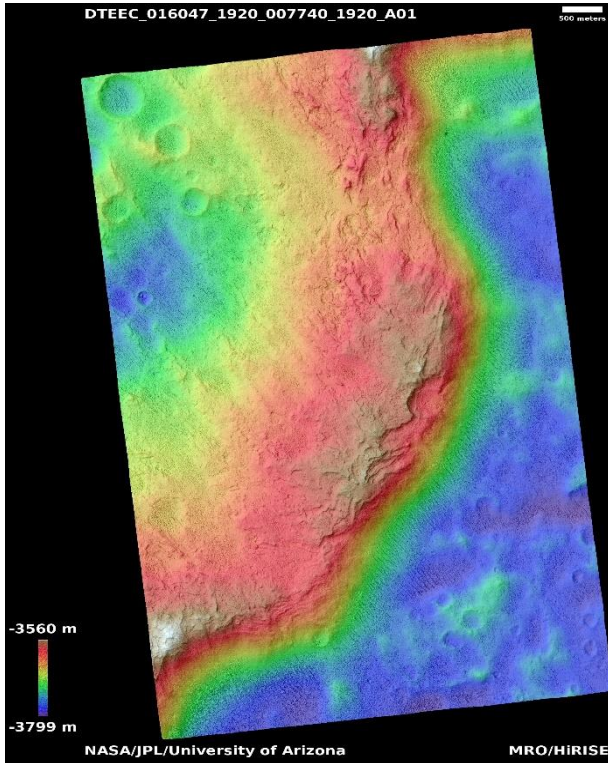
Edited by Kris Akers | UA

DTMs Included this Month

Distal rampart of crater in Isidis region.....	1
Layered yardangs.....	2
Sinus Meridiani dune changes.....	3
Gullies and crater fill.....	4
Dark dune field topography in Bunge Crater.....	5
Scarp in mid-latitude mantle.....	6
Small shield covering the Noctis Fossae.....	7
Elysium Mons caldera.....	8
Small vent near Ascræus Mons.....	9
Expanded crater and scalloped depressions.....	10
Classic barchan dunes.....	11
2km crater on south polar layered deposits.....	12

Distal rampart of crater in Isidis region

DTEEC_016047_1920_007740_1920_A01



12.0°N 89.5°E

DTM Producer: UA | Kris Akers

Stereo Pair:

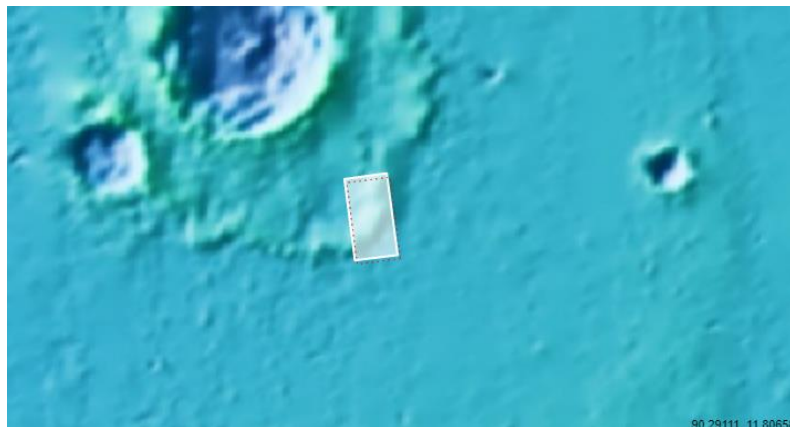
ESP_016047_1920

PSP_007740_1920

For more details about this DTM, visit:

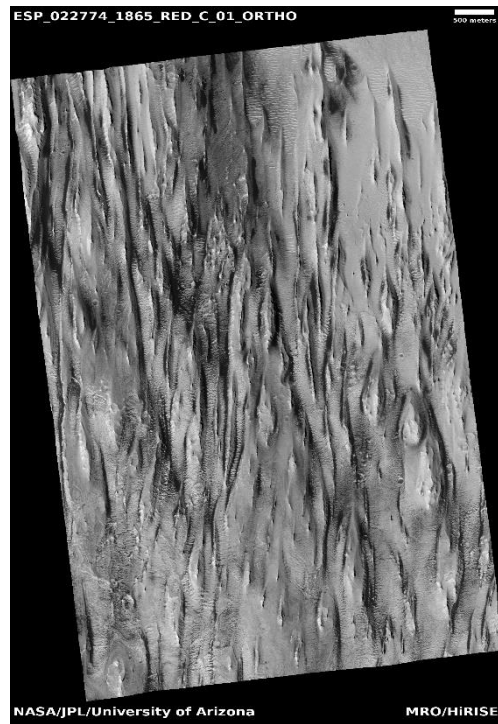
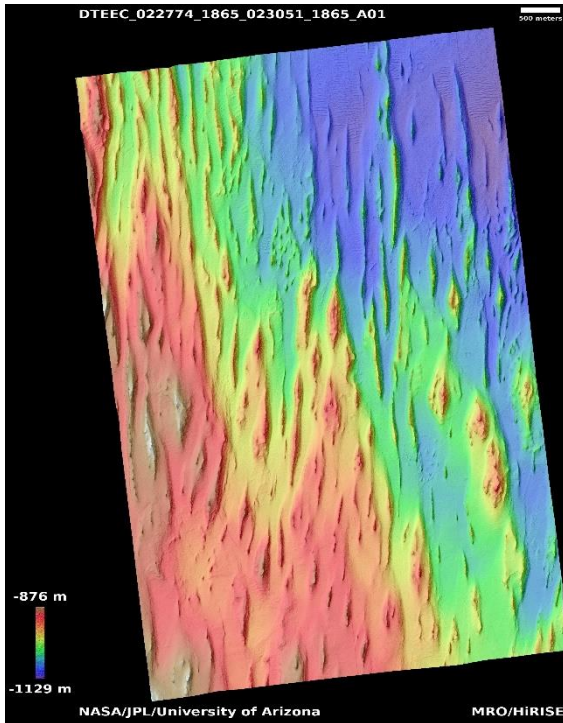
[https://www.uahirise.org/dtm/dtm.php?](https://www.uahirise.org/dtm/dtm.php?ID=ESP_016047_1920)

[ID=ESP_016047_1920](https://www.uahirise.org/dtm/dtm.php?ID=ESP_016047_1920)



Layered yardangs

DTEEC_022774_1865_023051_1865_A01



6.3°N 34.7°E

DTM Producer: UA | Kris Akers

Stereo Pair:

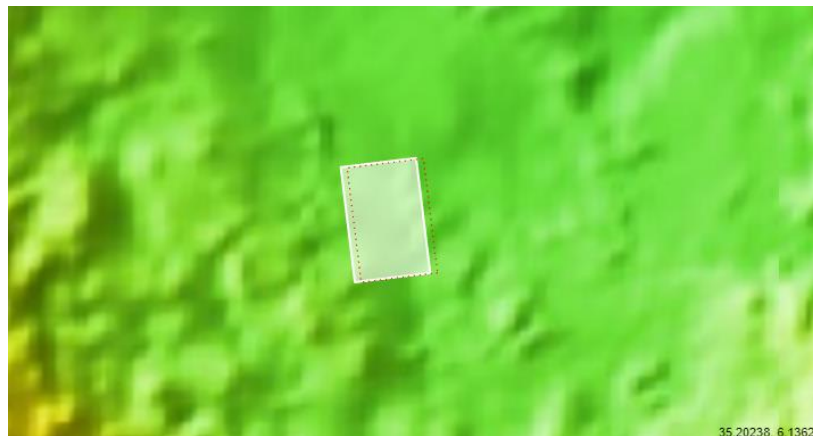
ESP_022774_1865

ESP_023051_1865

For more details about this DTM, visit:

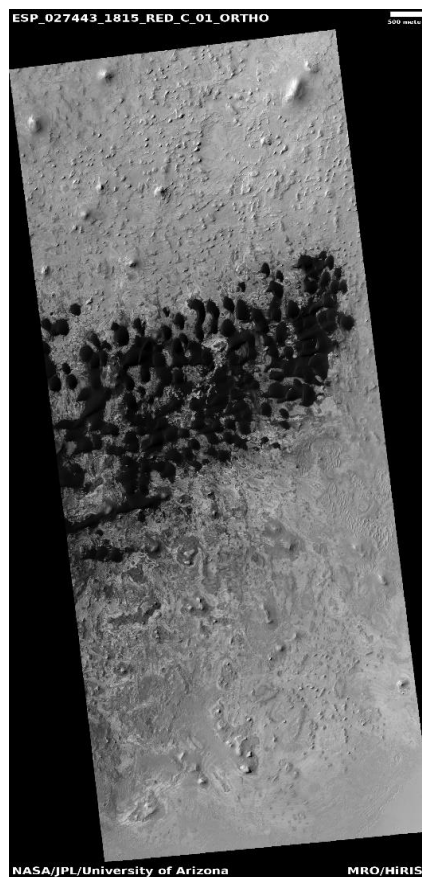
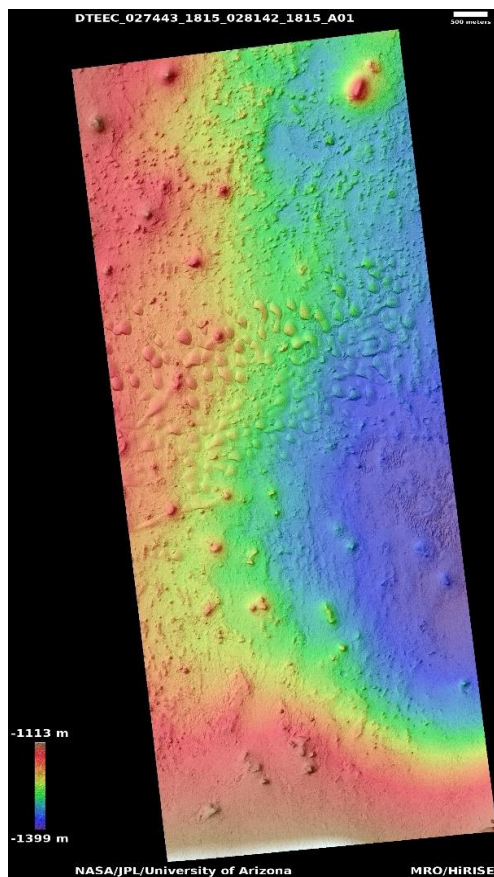
[https://www.uahirise.org/dtm/dtm.php?](https://www.uahirise.org/dtm/dtm.php?ID=ESP_022774_1865)

[ID=ESP_022774_1865](https://www.uahirise.org/dtm/dtm.php?ID=ESP_022774_1865)



Sinus Meridiani dune changes

DTEEC_027443_1815_028142_1815_A01



1.6°N 8.5°E

DTM Producer: UA | Maximus X Cabrera

Stereo Pair:

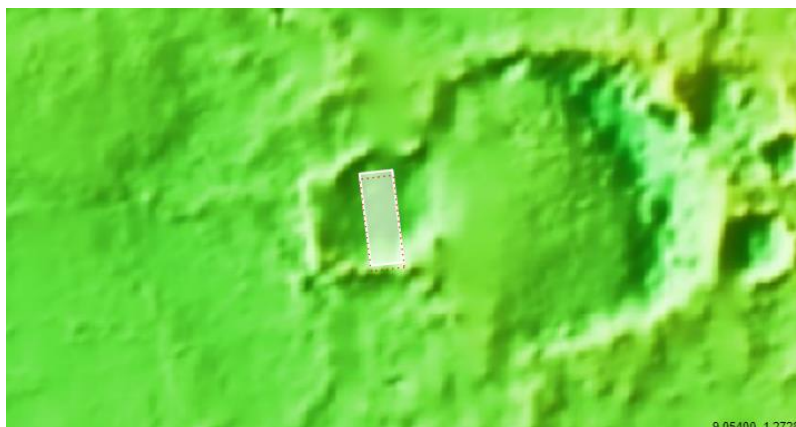
ESP_027443_1815

ESP_028142_1815

For more details about this DTM, visit:

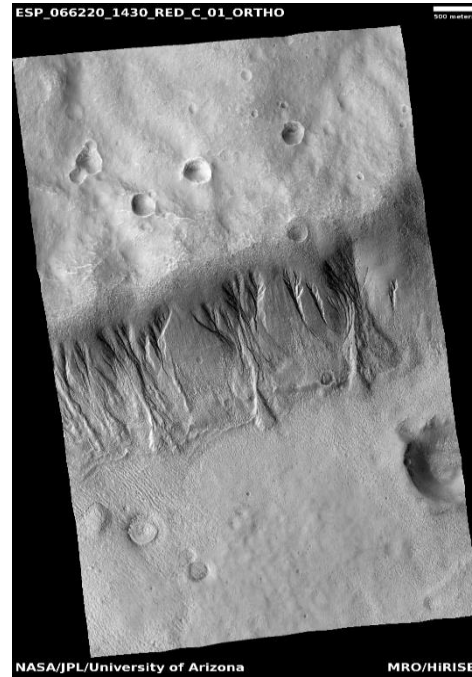
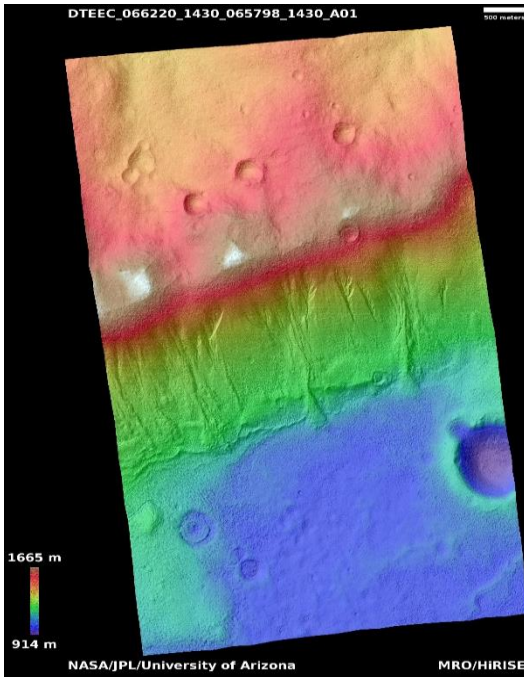
[https://www.uahirise.org/dtm/dtm.php?](https://www.uahirise.org/dtm/dtm.php?ID=ESP_027443_1815)

[ID=ESP_027443_1815](https://www.uahirise.org/dtm/dtm.php?ID=ESP_027443_1815)



Gullies and crater fill

DTEEC_066220_1430_065798_1430_A01



36.8°S 148.3°E

DTM Producer: UA | Kris Akers

Stereo Pair:

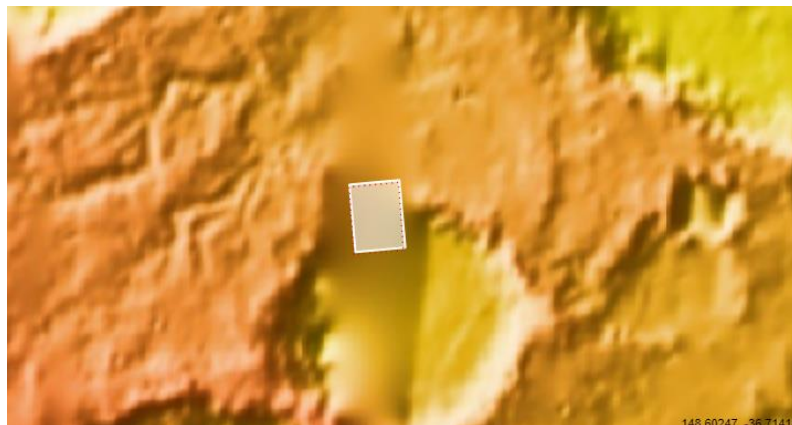
ESP_066220_1430

ESP_065798_1430

For more details about this DTM, visit:

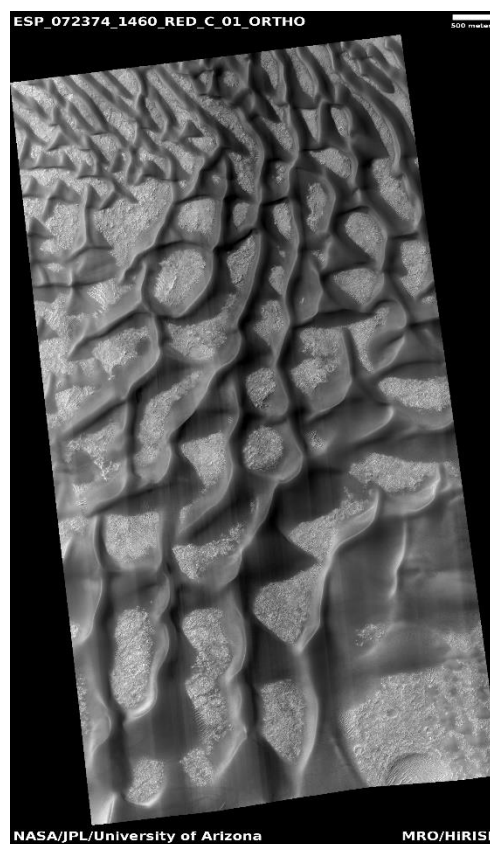
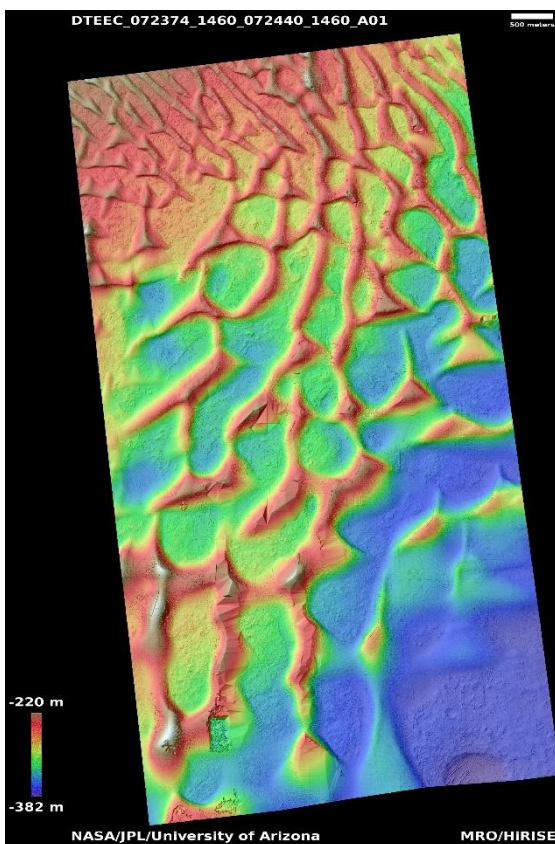
[https://www.uahirise.org/dtm/dtm.php?](https://www.uahirise.org/dtm/dtm.php?ID=ESP_066220_1430)

[ID=ESP_066220_1430](https://www.uahirise.org/dtm/dtm.php?ID=ESP_066220_1430)



Dark dune field topography in Bunge Crater

DTEEC_072374_1460_072440_1460_A01



33.5°S 311.2°E

DTM Producer: UA | Maximus X Cabrera

Stereo Pair:

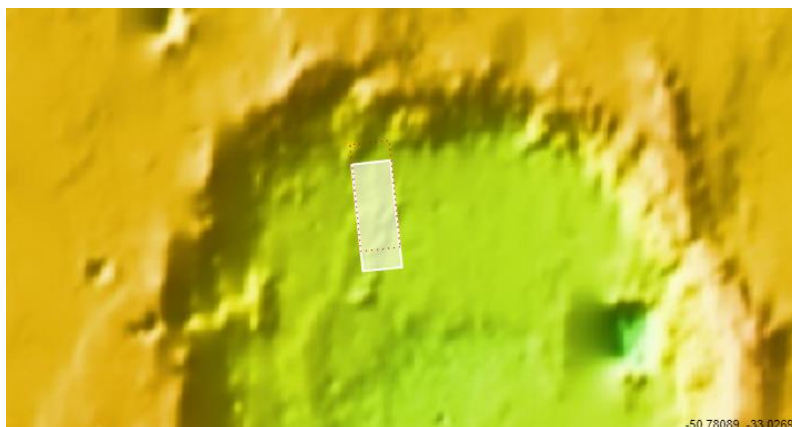
ESP_072374_1460

ESP_072440_1460

For more details about this DTM, visit:

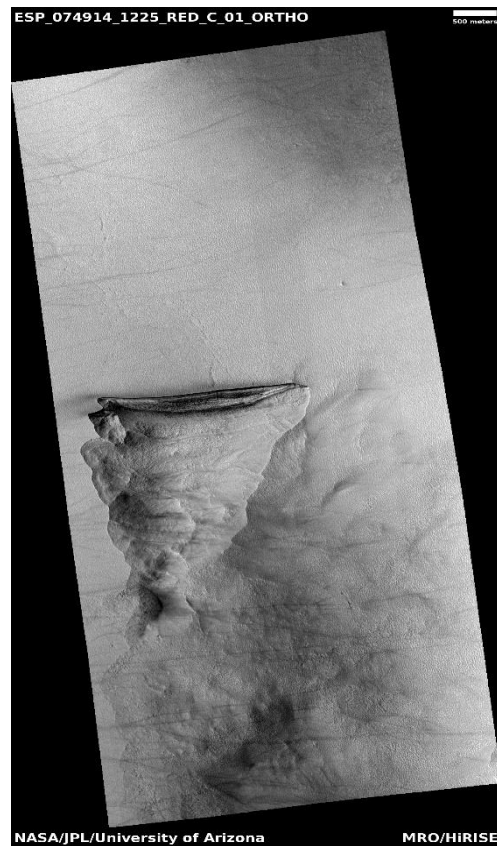
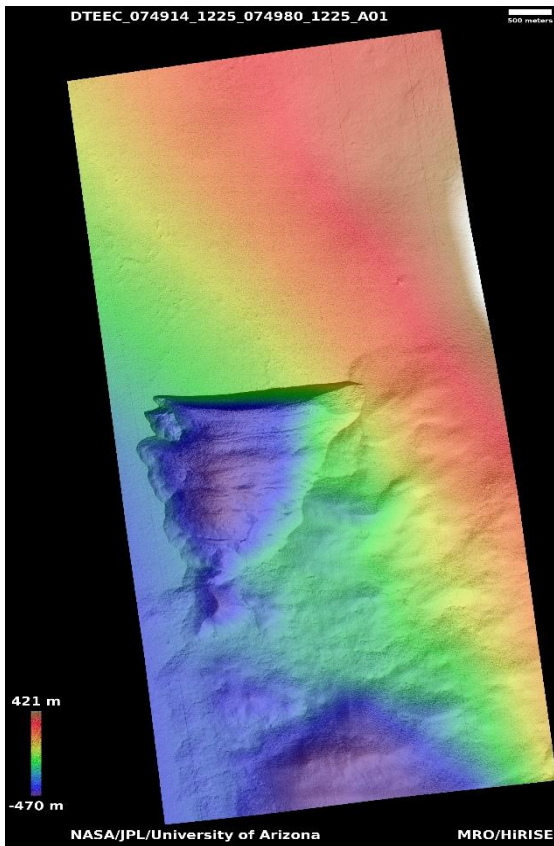
[https://www.uahirise.org/dtm/dtm.php?](https://www.uahirise.org/dtm/dtm.php?ID=ESP_072374_1460)

[ID=ESP_072374_1460](https://www.uahirise.org/dtm/dtm.php?ID=ESP_072374_1460)



Scarp in mid-latitude mantle

DTEEC_074914_1225_074980_1225_A01



57.2°S 89.8°E

DTM Producer: UA | Branden M Gosse

Stereo Pair:

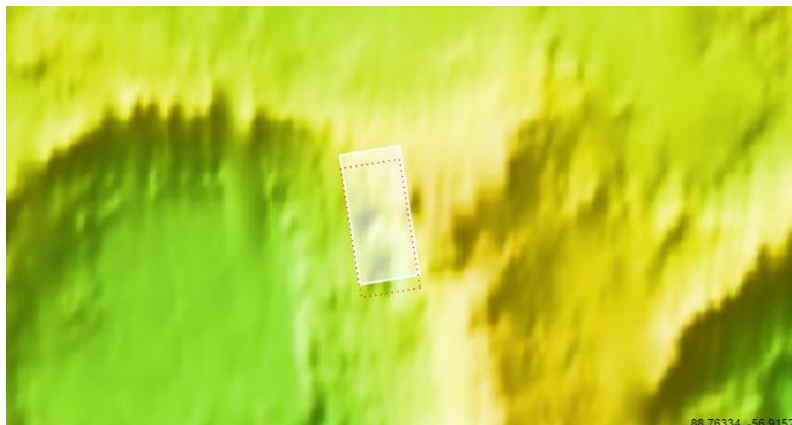
ESP_074914_1225

ESP_074980_1225

For more details about this DTM, visit:

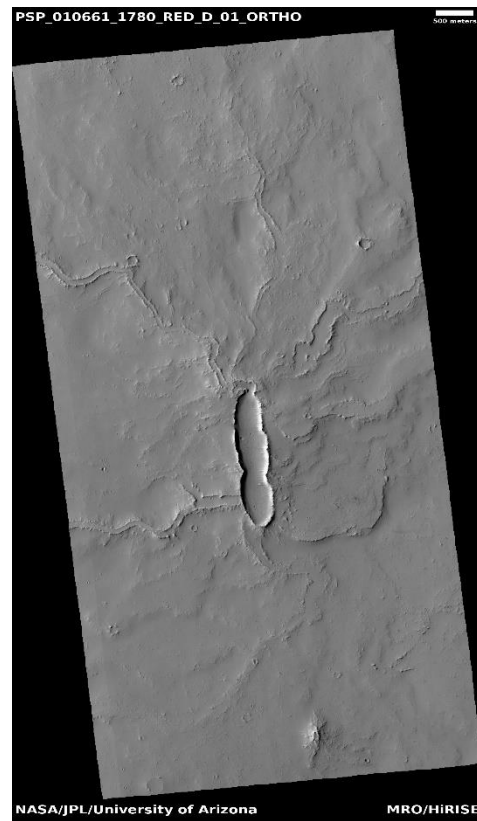
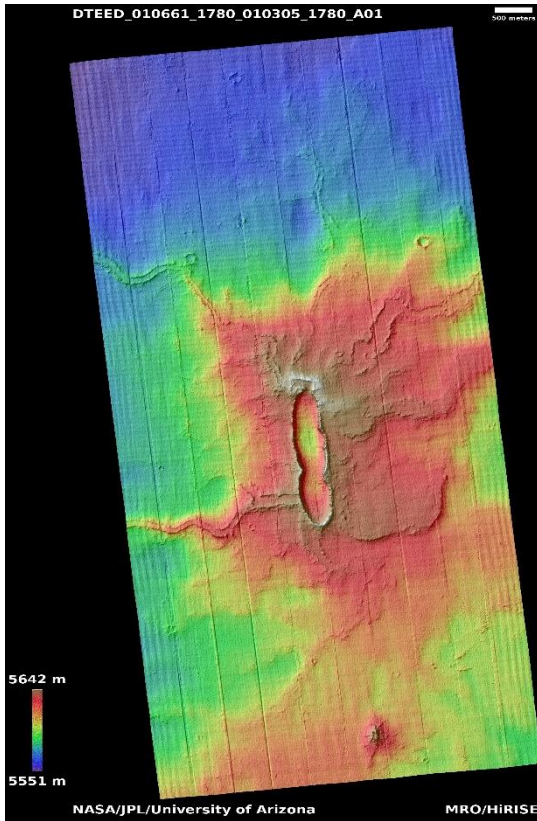
[https://www.uahirise.org/dtm/dtm.php?](https://www.uahirise.org/dtm/dtm.php?ID=ESP_074914_1225)

[ID=ESP_074914_1225](https://www.uahirise.org/dtm/dtm.php?ID=ESP_074914_1225)



Small shield covering the Noctis Fossae

DTEED_010661_1780_010305_1780_A01



1.9°S 256.3°E

DTM Producer: UA | Kris Akers

Stereo Pair:

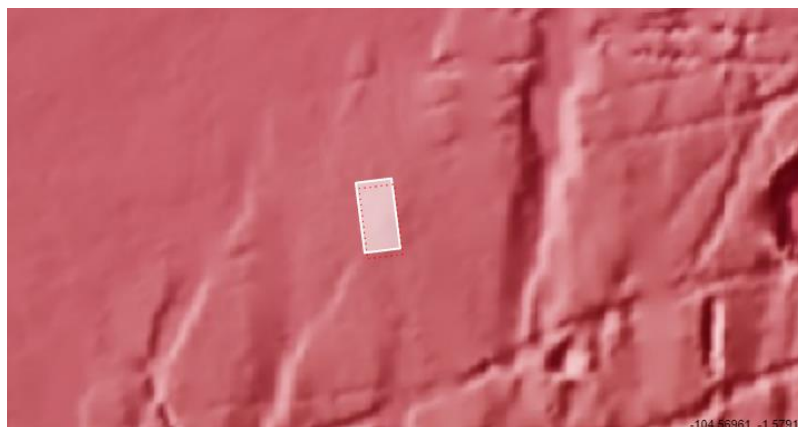
PSP_010661_1780

PSP_010305_1780

For more details about this DTM, visit:

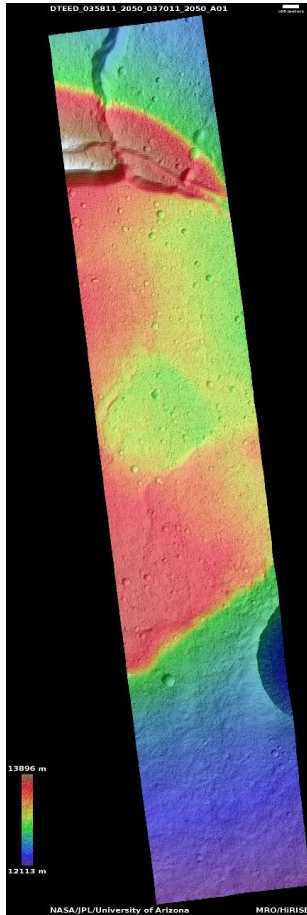
[https://www.uahirise.org/dtm/dtm.php?](https://www.uahirise.org/dtm/dtm.php?ID=PSP_010661_1780)

[ID=PSP_010661_1780](https://www.uahirise.org/dtm/dtm.php?ID=PSP_010661_1780)



Elysium Mons caldera

DTEED_035811_2050_037011_2050_A01



24.6°N 146.8°E

DTM Producer: UA | Kris Akers

Stereo Pair:

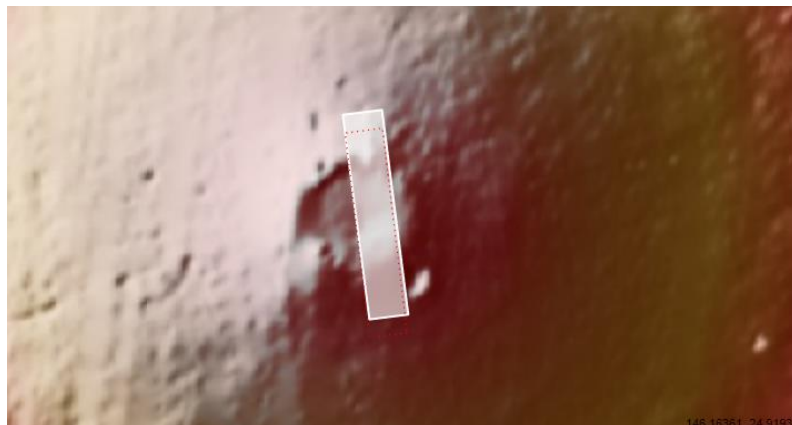
ESP_035811_2050

ESP_037011_2050

For more details about this DTM, visit:

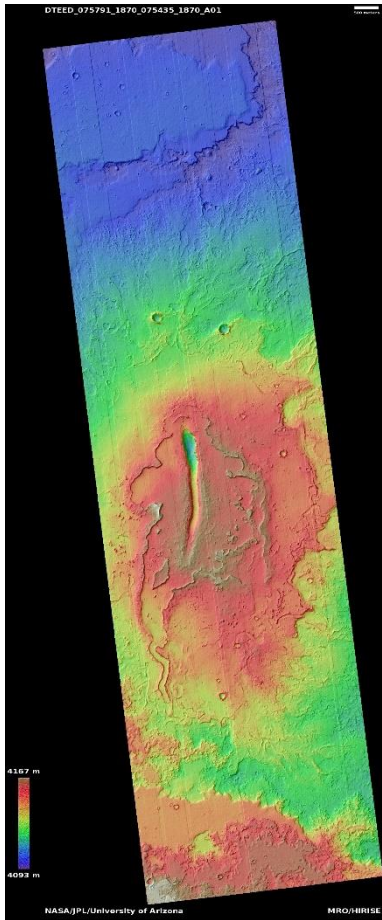
<https://www.uahirise.org/dtm/dtm.php?>

[ID=ESP_035811_2050](https://www.uahirise.org/dtm/dtm.php?ID=ESP_035811_2050)



Small vent near Ascraeus Mons

DTEED_075791_1870_075435_1870_A01



6.9°N 258.1°E

DTM Producer: UA | Maximus X Cabrera

Stereo Pair:

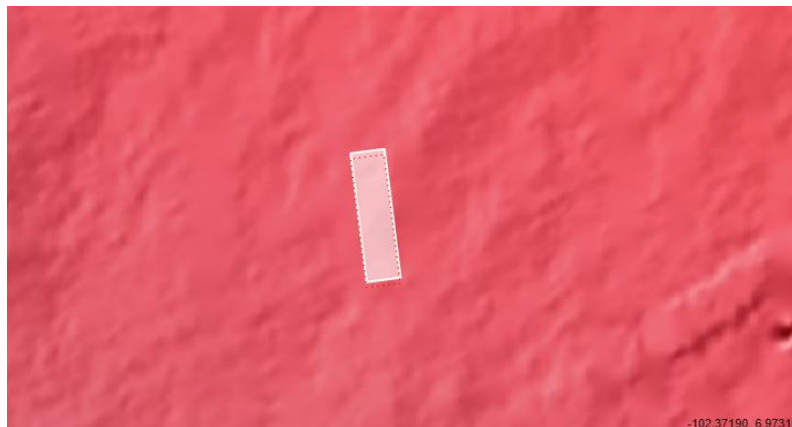
ESP_075791_1870

ESP_075435_1870

For more details about this DTM, visit:

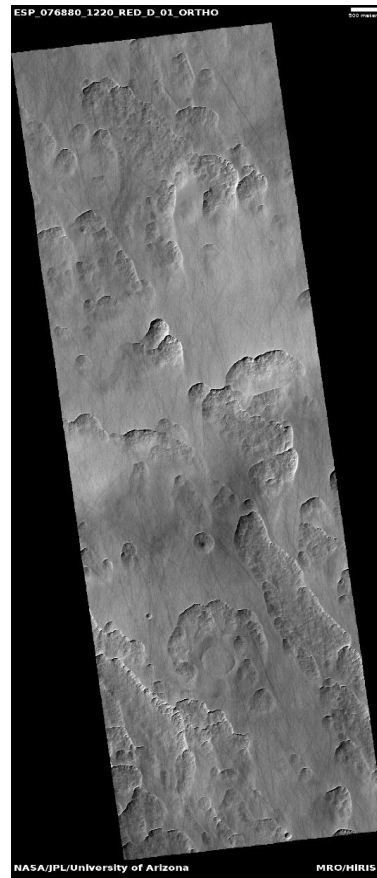
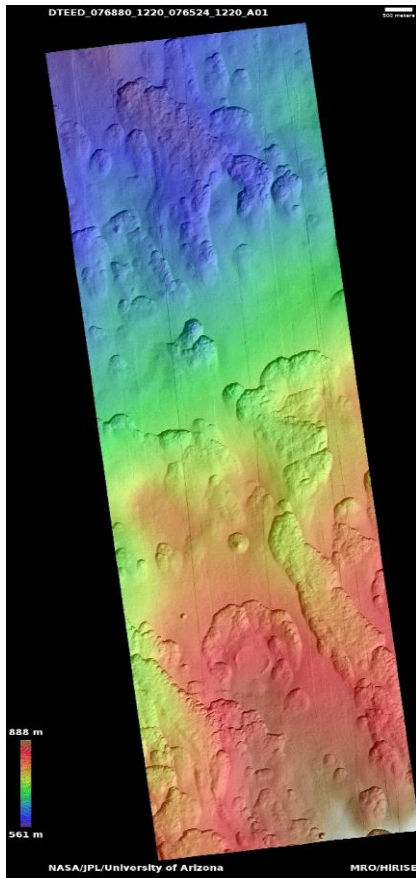
[https://www.uahirise.org/dtm/dtm.php?](https://www.uahirise.org/dtm/dtm.php?ID=ESP_075791_1870)

[ID=ESP_075791_1870](https://www.uahirise.org/dtm/dtm.php?ID=ESP_075791_1870)



Expanded crater and scalloped depressions

DTEED_076880_1220_076524_1220_A01



57.5°S 58.6°E

DTM Producer: UA | Kris Akers

Stereo Pair:

ESP_076880_1220

ESP_076524_1220

For more details about this DTM, visit:

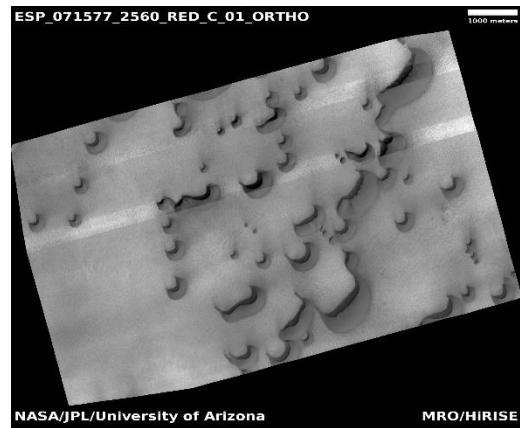
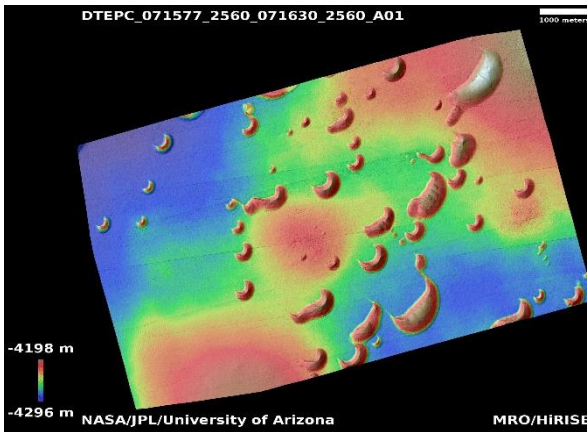
[https://www.uahirise.org/dtm/dtm.php?](https://www.uahirise.org/dtm/dtm.php?ID=ESP_076880_1220)

[ID=ESP_076880_1220](https://www.uahirise.org/dtm/dtm.php?ID=ESP_076880_1220)



Classic barchan dunes

DTEPC_071577_2560_071630_2560_A01



75.7°N 91.1°E

DTM Producer: UA | Kris Akers

Stereo Pair:

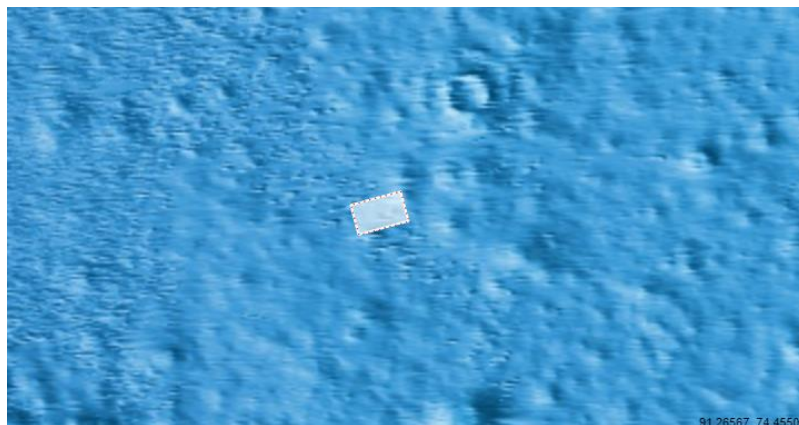
ESP_071577_2560

ESP_071630_2560

For more details about this DTM, visit:

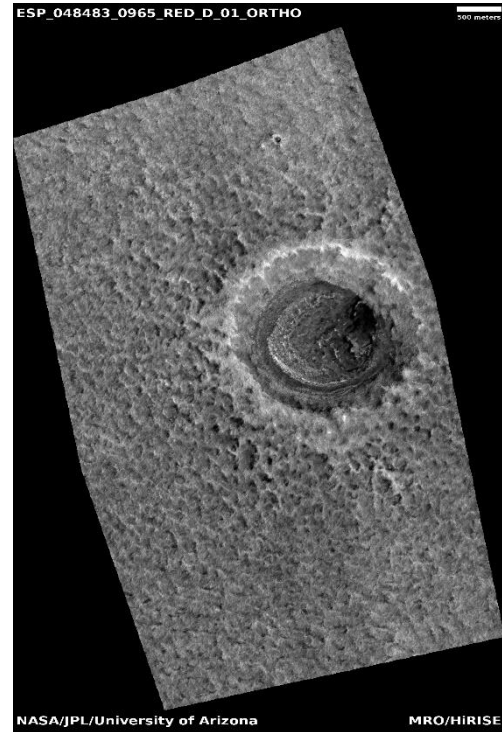
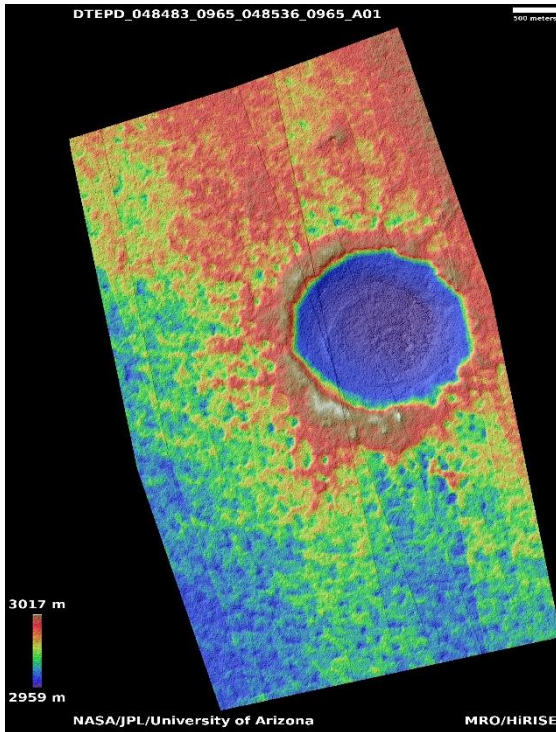
[https://www.uahirise.org/dtm/dtm.php?](https://www.uahirise.org/dtm/dtm.php?ID=ESP_071577_2560)

[ID=ESP_071577_2560](https://www.uahirise.org/dtm/dtm.php?ID=ESP_071577_2560)



2km crater on south polar layered deposits

DTEPD_048483_0965_048536_0965_A01



83.5°S 191.8°E

DTM Producer: UA | Branden M Gosse

Stereo Pair:

ESP_048483_0965

ESP_048536_0965

For more details about this DTM, visit:

[https://www.uahirise.org/dtm/dtm.php?](https://www.uahirise.org/dtm/dtm.php?ID=ESP_048483_0965)

[ID=ESP_048483_0965](https://www.uahirise.org/dtm/dtm.php?ID=ESP_048483_0965)

