



**HIGH RESOLUTION IMAGING
SCIENCE EXPERIMENT**



DTM PDS RELEASES

June 2021

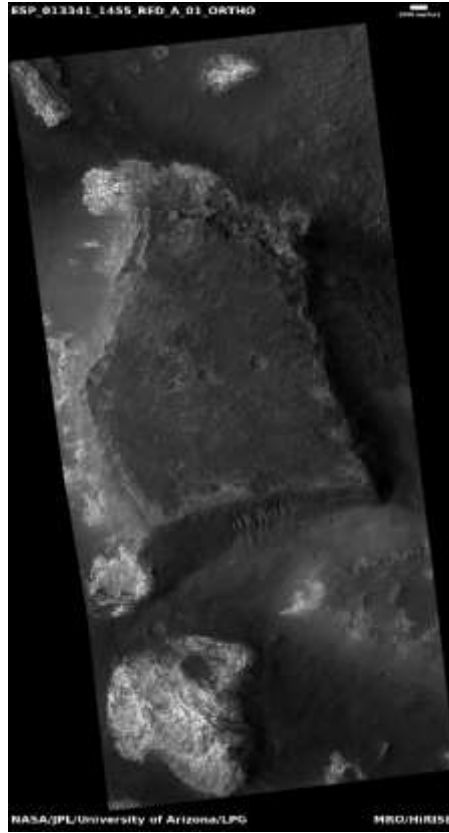
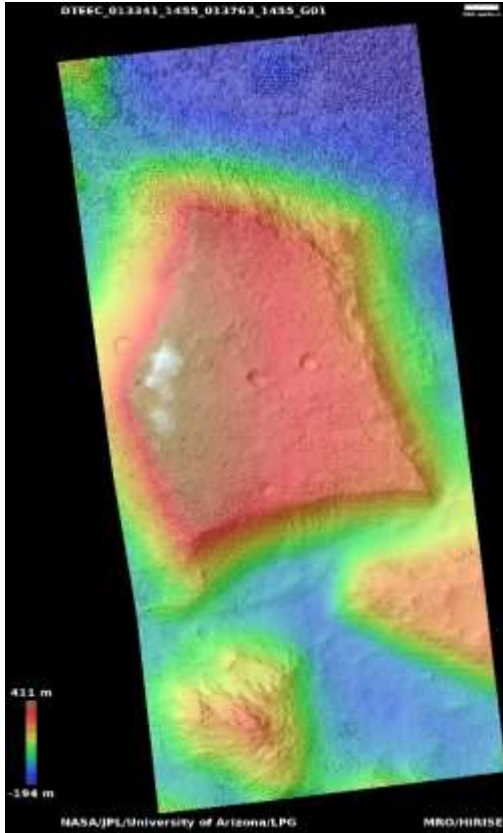
Edited by Kris Akers | UA

DTMs Included this Month

Dark deposits in gullies in Ariadnes Colles.....	1
Gullies in southern hemisphere crater.....	2
Well-preserved impact crater with steep slopes.....	3
Slope monitoring.....	4
Gullies in southern hemisphere crater.....	5
Rifts and pitted cones in Utopia Planitia.....	6
Gully monitoring.....	7
Landforms in Utopia Planitia.....	8
Exposure of polar layered deposits not well covered by Mars Global Surveyor.....	9
Exposure of polar layered deposits in area not well observed.....	10
Exposure of north polar layered deposits.....	11
High-latitude exposure of north polar layered deposits.....	12

Dark deposits in gullies in Ariadnes Colles

DTEEC_013341_1455_013763_1455_G01



34.4°S 172.3°E

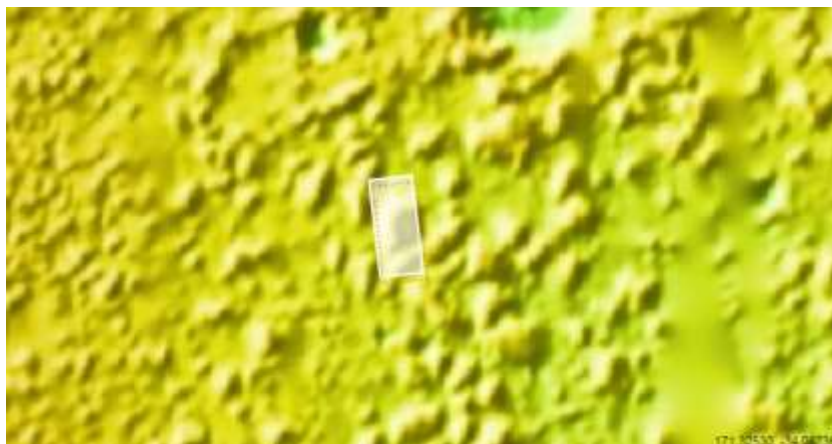
DTM Producer: LPG | Axel Noblet

Stereo Pair:

ESP_013341_1455

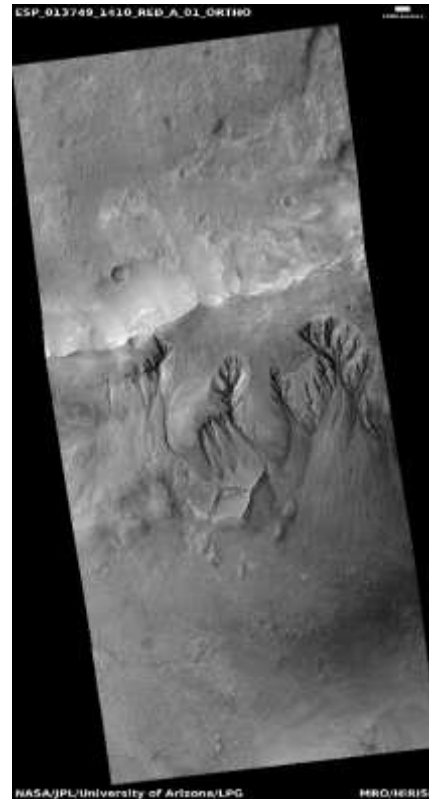
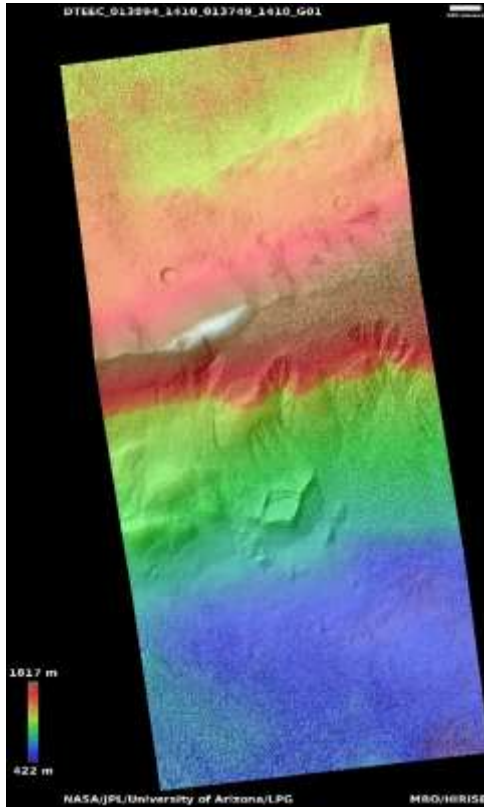
ESP_013763_1455

For more details about this DTM, visit:
https://www.uahirise.org/dtm/dtm.php?ID=ESP_013341_1455



Gullies in southern hemisphere crater

DTEEC_013894_1410_013749_1410_G01



38.9°S 195.9°E

DTM Producer: LPG | Axel Noblet

Stereo Pair:

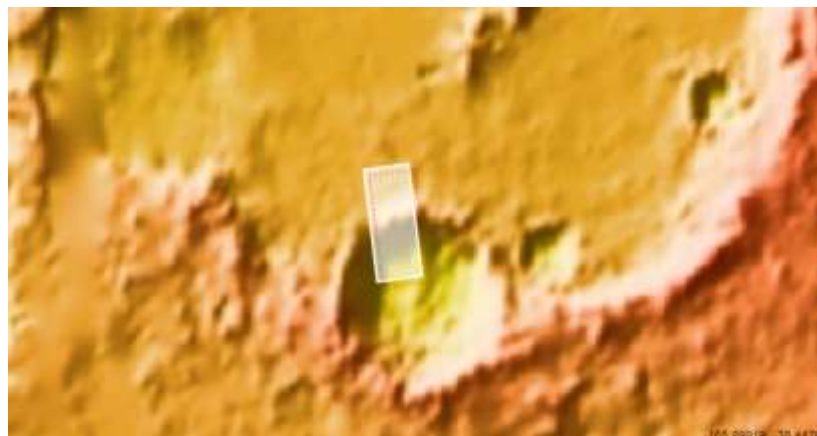
ESP_013894_1410

ESP_013749_1410

For more details about this DTM, visit:

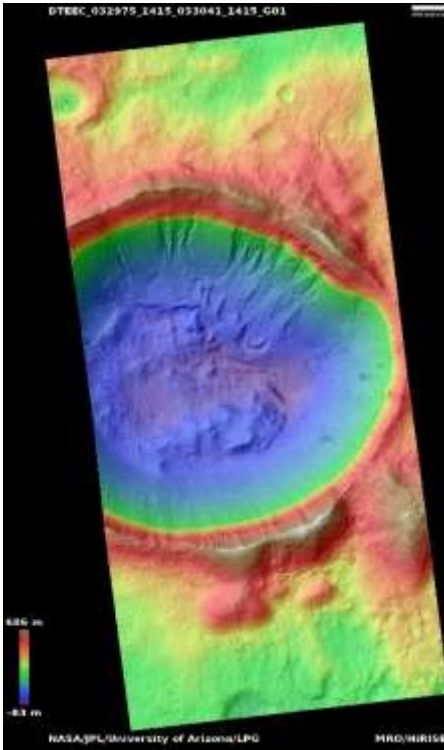
[https://www.uahirise.org/dtm/dtm.php?](https://www.uahirise.org/dtm/dtm.php?ID=ESP_013894_1410)

[ID=ESP_013894_1410](https://www.uahirise.org/dtm/dtm.php?ID=ESP_013894_1410)



Well-preserved impact crater with steep slopes

DTEEC_032975_1415_033041_1415_G01



38.2°S 183.9°E

DTM Producer: LPG | Axel Noblet

Stereo Pair:

ESP_032975_1415

ESP_033041_1415

For more details about this DTM, visit:

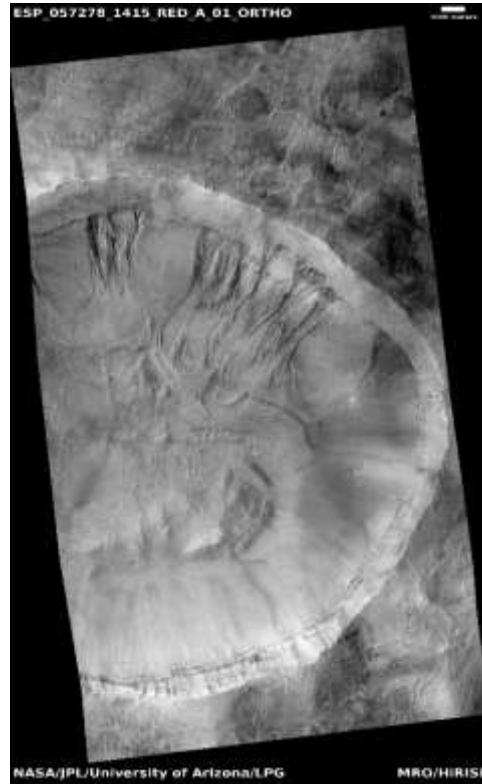
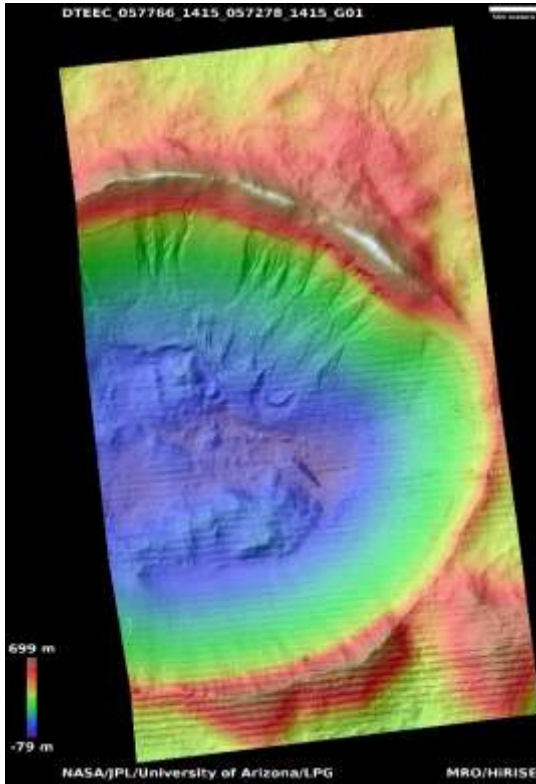
[https://www.uahirise.org/dtm/dtm.php?](https://www.uahirise.org/dtm/dtm.php?ID=ESP_032975_1415)

[ID=ESP_032975_1415](https://www.uahirise.org/dtm/dtm.php?ID=ESP_032975_1415)



Slope monitoring

DTEEC_057766_1415_057278_1415_G01



38.2°S 183.9°E

DTM Producer: LPG | Axel Noblet

Stereo Pair:

ESP_057766_1415

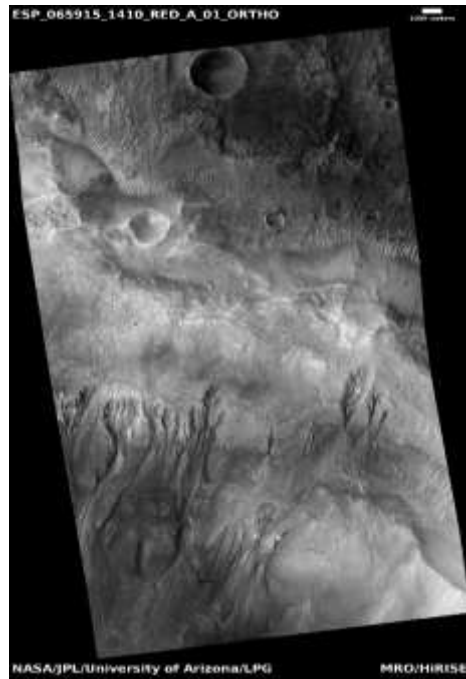
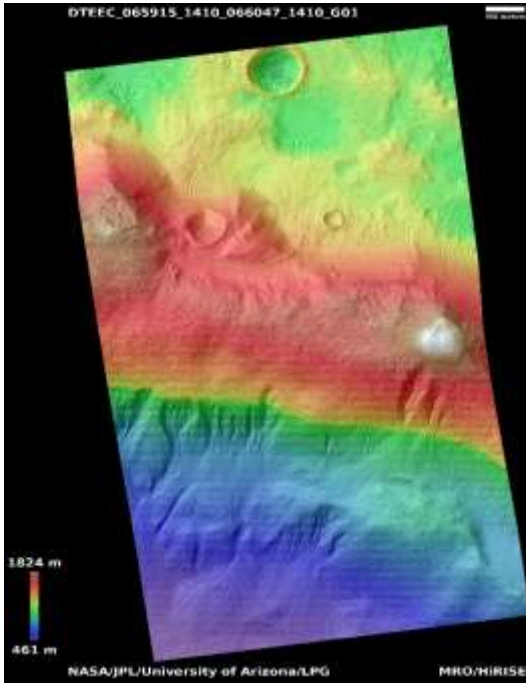
ESP_057278_1415

For more details about this DTM, visit:
https://www.uahirise.org/dtm/dtm.php?ID=ESP_057766_1415



Gullies in southern hemisphere crater

DTEEC_065915_1410_066047_1410_G01



38.9°S 195.9°E

DTM Producer: LPG | Axel Noblet

Stereo Pair:

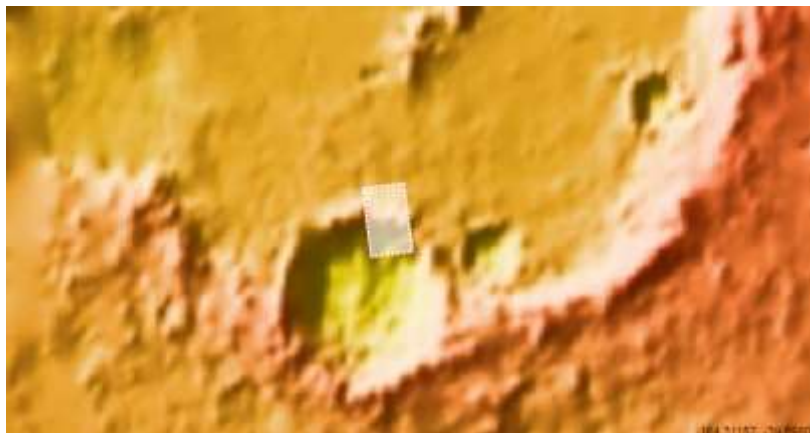
ESP_065915_1410

ESP_066047_1410

For more details about this DTM, visit:

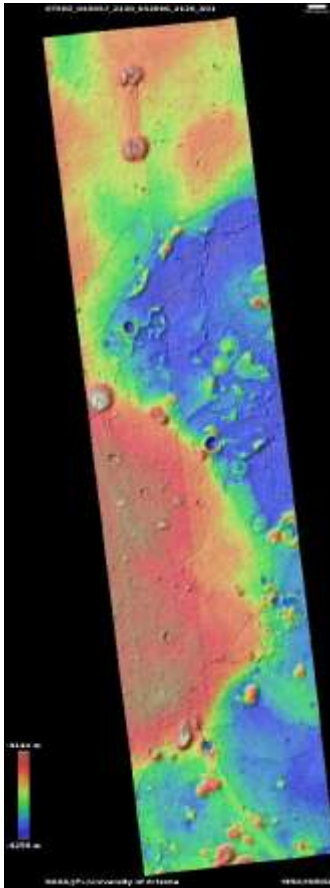
<https://www.uahirise.org/dtm/dtm.php?>

[ID=ESP_065915_1410](https://www.uahirise.org/dtm/dtm.php?ID=ESP_065915_1410)



Rifts and pitted cones in Utopia Planitia

DTEED_045057_2120_052006_2120_A01



31.7°N 96.3°E

DTM Producer: UA | Kris Akers

Stereo Pair:

ESP_045057_2120

ESP_052006_2120

For more details about this DTM, visit:

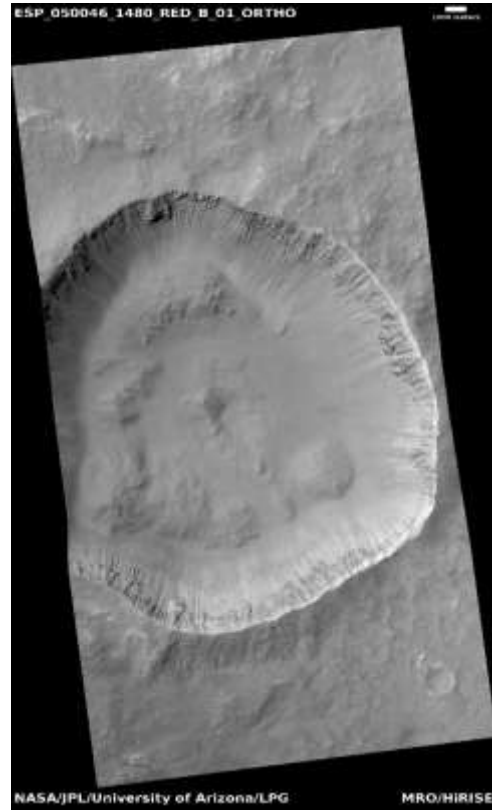
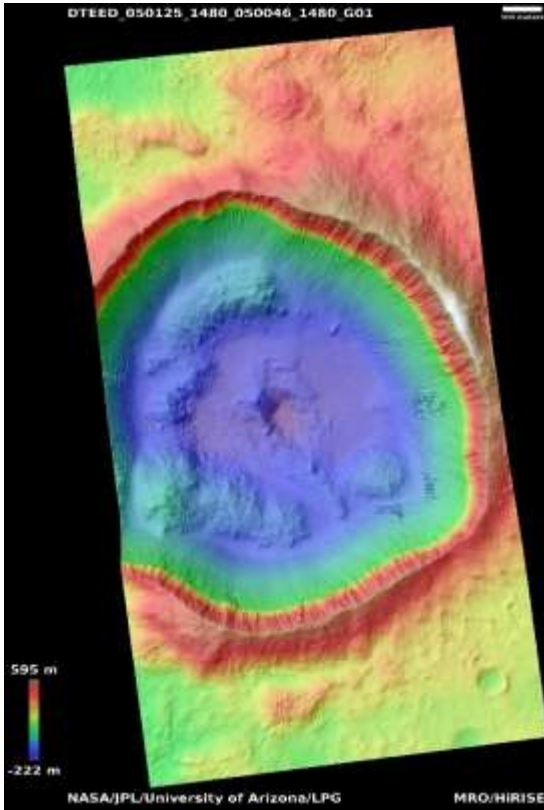
<https://www.uahirise.org/dtm/dtm.php?>

[ID=ESP_045057_2120](https://www.uahirise.org/dtm/dtm.php?ID=ESP_045057_2120)



Gully monitoring

DTEED_050125_1480_050046_1480_G01



31.5°S 337.1°E

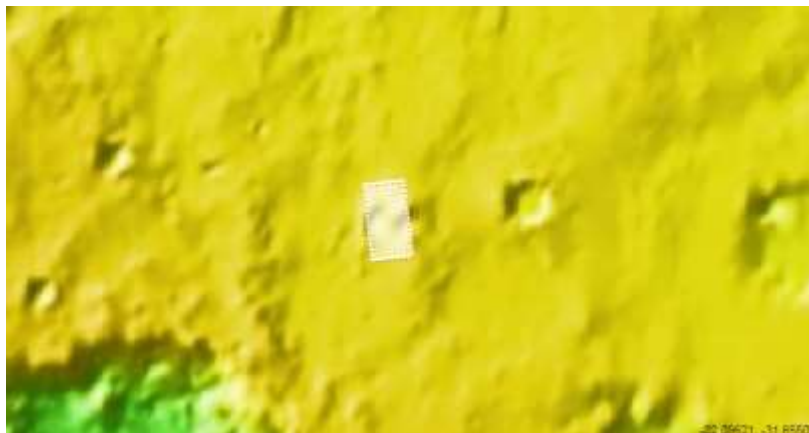
DTM Producer: LPG | Axel Noblet

Stereo Pair:

ESP_050125_1480

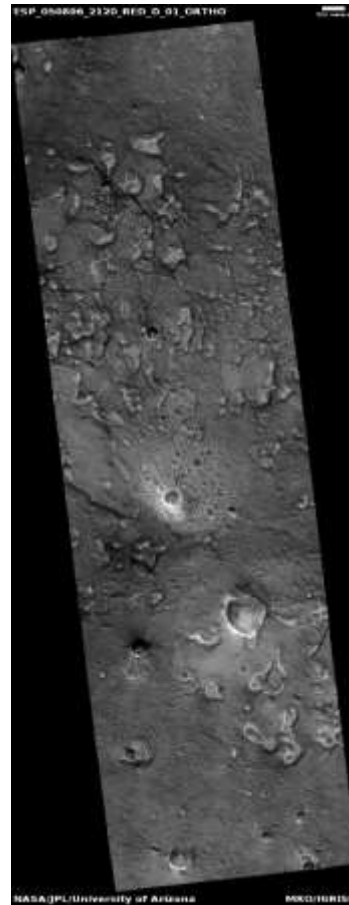
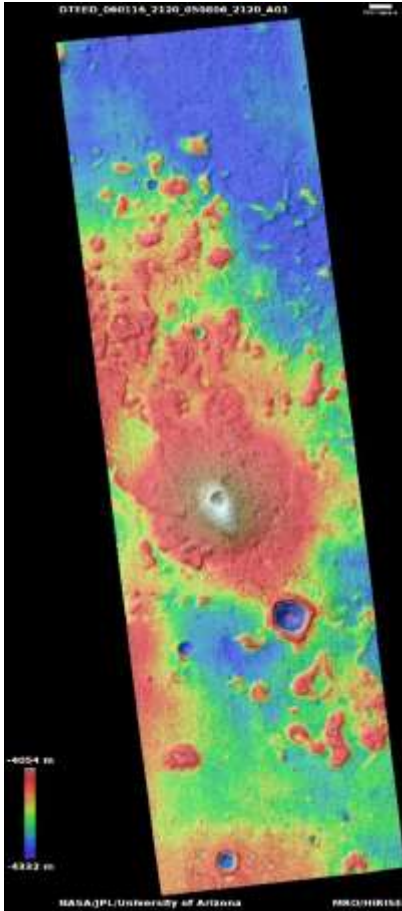
ESP_050046_1480

For more details about this DTM, visit:
https://www.uahirise.org/dtm/dtm.php?ID=ESP_050125_1480



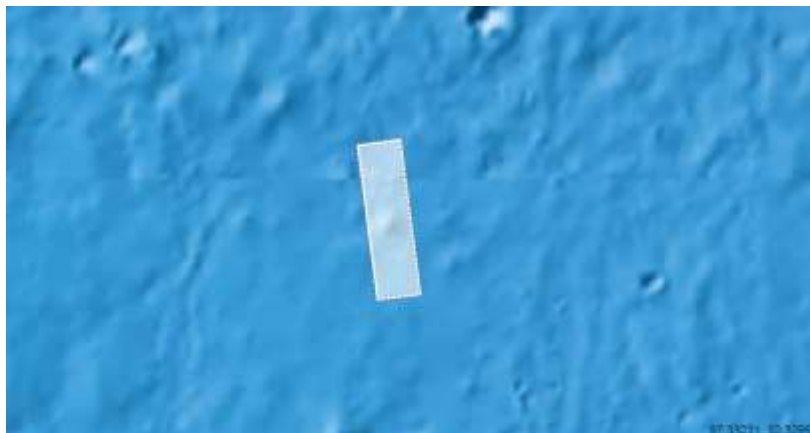
Landforms in Utopia Planitia

DTEED_060116_2120_050806_2120_A01



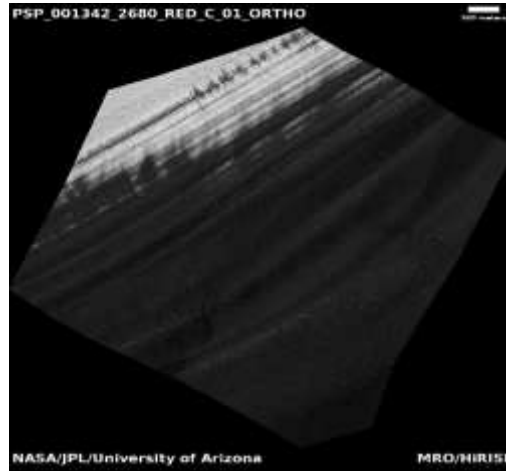
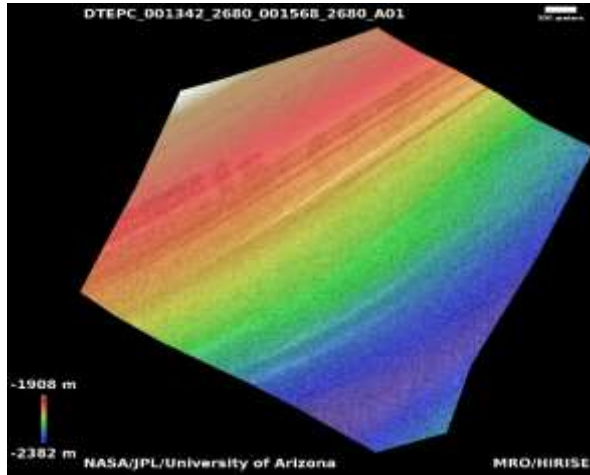
31.9°N 96.9°E
DTM Producer: UA | Kris Akers
Stereo Pair:
ESP_060116_2120
ESP_050806_2120

For more details about this DTM, visit:
https://www.uahirise.org/dtm/dtm.php?ID=ESP_060116_2120



Exposure of polar layered deposits not well covered by Mars Global Surveyor

DTEPC_001342_2680_001568_2680_A01



88.0°N 62.5°E

DTM Producer: UA | Shavonne Morin

Stereo Pair:

PSP_001342_2680

PSP_001568_2680

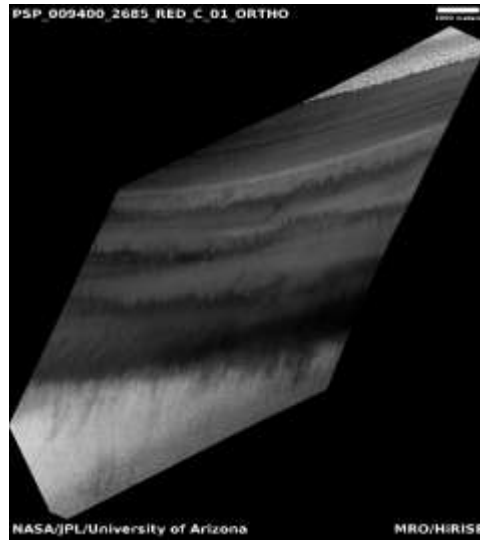
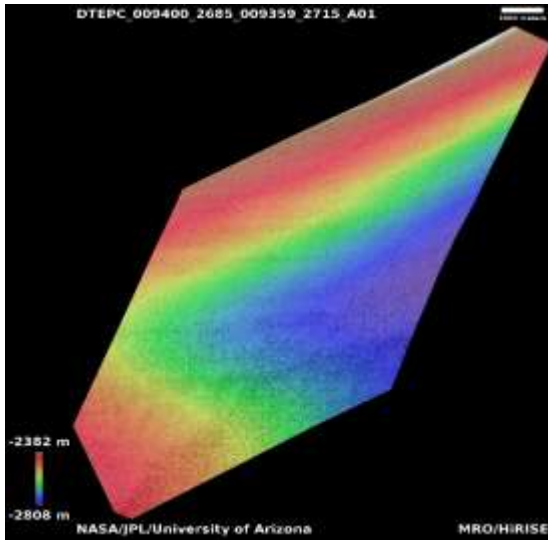
For more details about this DTM, visit:

https://www.uahirise.org/dtm/dtm.php?ID=PSP_001342_2680



Exposure of polar layered deposits in area not well observed

DTEPC_009400_2685_009359_2715_A01



88.4°N 43.2°E

DTM Producer: UA | Shavonne Morin

Stereo Pair:

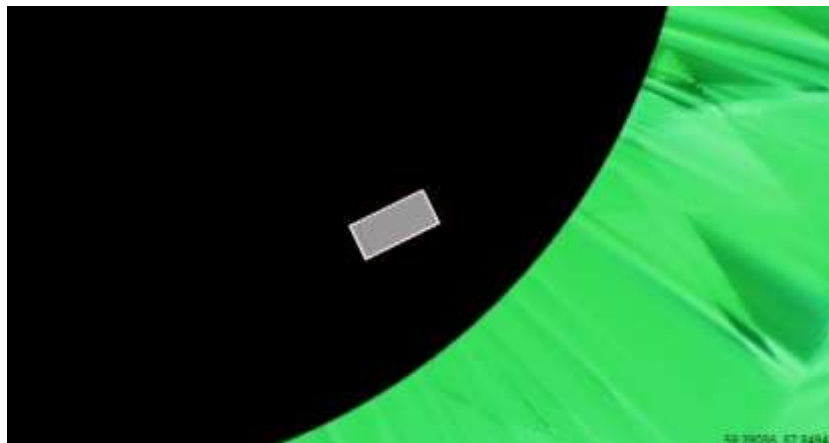
PSP_009400_2685

PSP_009359_2715

For more details about this DTM, visit:

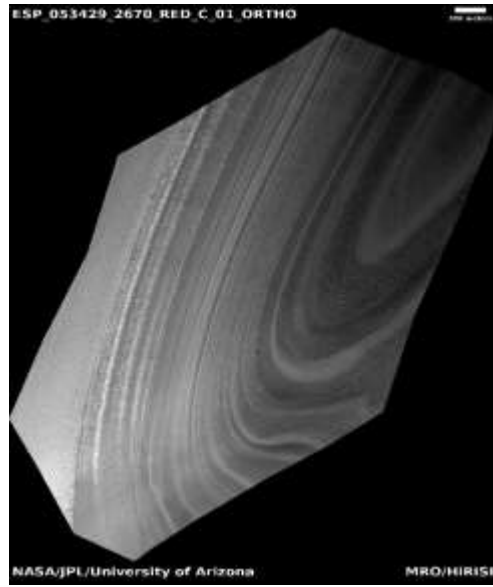
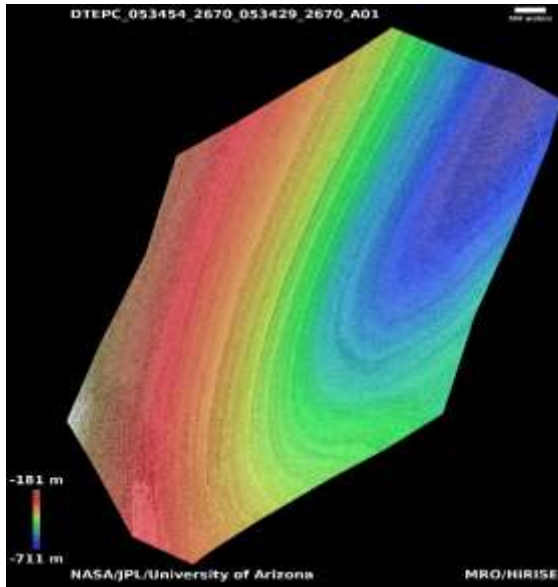
[https://www.uahirise.org/dtm/dtm.php?](https://www.uahirise.org/dtm/dtm.php?ID=PSP_009400_2685)

[ID=PSP_009400_2685](https://www.uahirise.org/dtm/dtm.php?ID=PSP_009400_2685)



Exposure of north polar layered deposits

DTEPC_053454_2670_053429_2670_A01



87.1°N 92.9°E

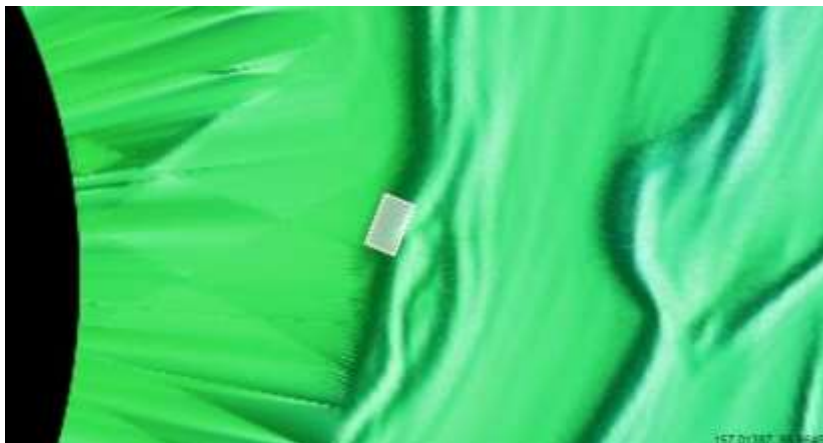
DTM Producer: UA | Shavonne Morin

Stereo Pair:

ESP_053454_2670

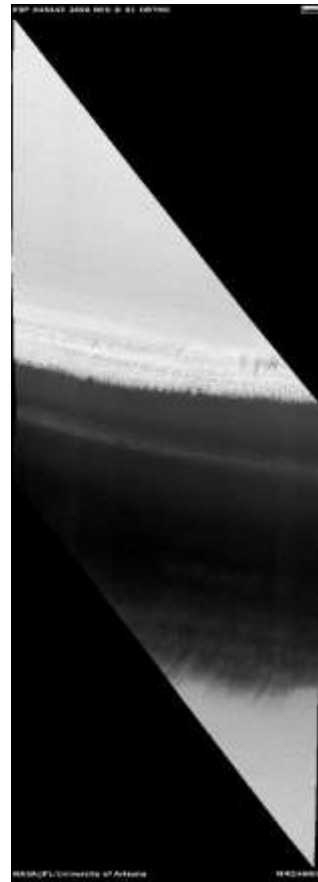
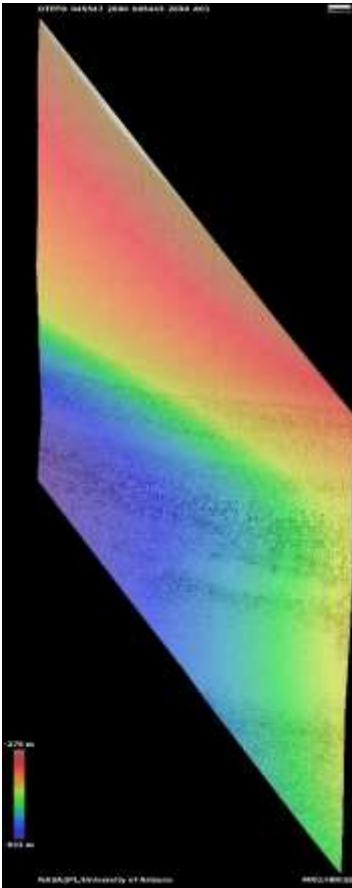
ESP_053429_2670

For more details about this DTM, visit:
https://www.uahirise.org/dtm/dtm.php?ID=ESP_053454_2670



High-latitude exposure of north polar layered deposits

DTEPD_045547_2690_045443_2690_A01



88.8°N 9.9°E

DTM Producer: UA | Shavonne Morin

Stereo Pair:

ESP_045547_2690

ESP_045443_2690

For more details about this DTM, visit:

[https://www.uahirise.org/dtm/dtm.php?](https://www.uahirise.org/dtm/dtm.php?ID=ESP_045547_2690)

[ID=ESP_045547_2690](https://www.uahirise.org/dtm/dtm.php?ID=ESP_045547_2690)

