



**HIGH RESOLUTION IMAGING
SCIENCE EXPERIMENT**



DTM PDS RELEASES

July 2021

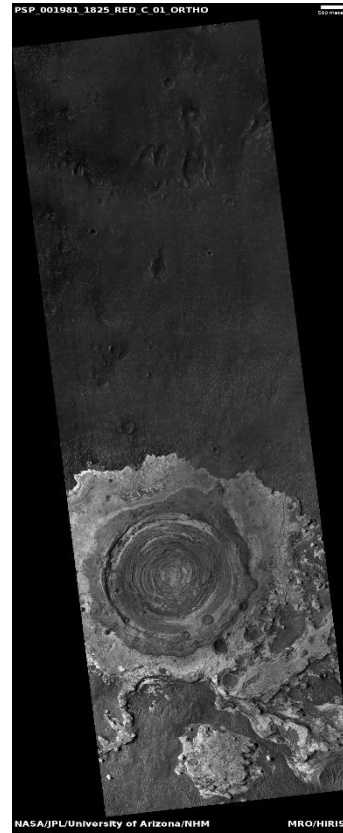
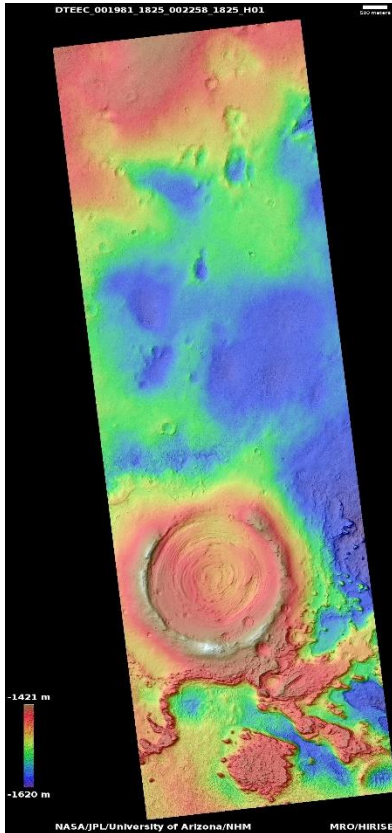
Edited by Kris Akers | UA

DTMs Included this Month

Very interesting circular layered form – crater filled with layered deposits.....	1
Possible MSL rover landing site near Jezero Crater.....	2
Recent 6-kilometer diameter crater in northern plains.....	3
Echus Chasma layered deposits.....	4
Depositional fan in Hargraves Crater.....	5
Candidate recent impact site.....	6
Cross-bedding in layers on steep scarp.....	7
Scarp.....	8
Scarp in mid-latitude mantle.....	9
Erosional scarp in mid-latitude mantle.....	10
Scarp in mid-latitudes.....	11
Candidate ExoMars landing site in Oxia Palus.....	12
Chaos material north of Hydaspis Chaos.....	13
Dunes and steep slopes in Coprates Chasma.....	14
Candidate ExoMars landing site in Oxia Planum.....	15
Chaos on the floor of Candor Chasma.....	16
Hill southeast of Jezero Crater.....	17

Very interesting circular layered form – crater filled with layered deposits

DTEEC_001981_1825_002258_1825_H01



2.3°N 3.5°E

DTM Producer: NHM | Joel M Davis

Stereo Pair:

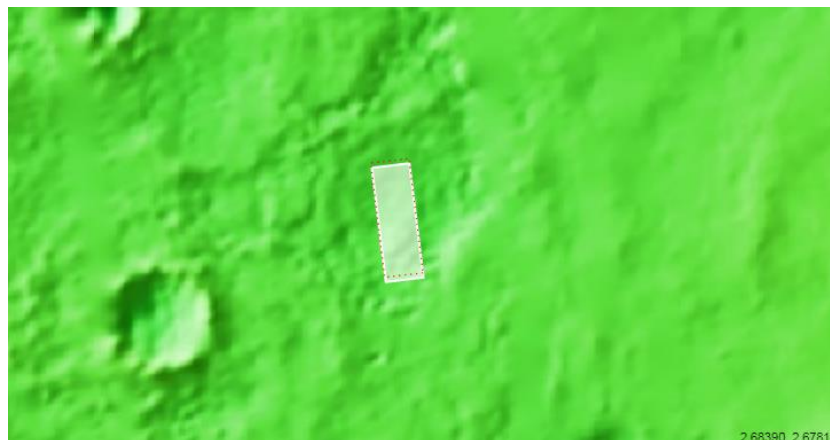
PSP_001981_1825

PSP_002258_1825

For more details about this DTM, visit:

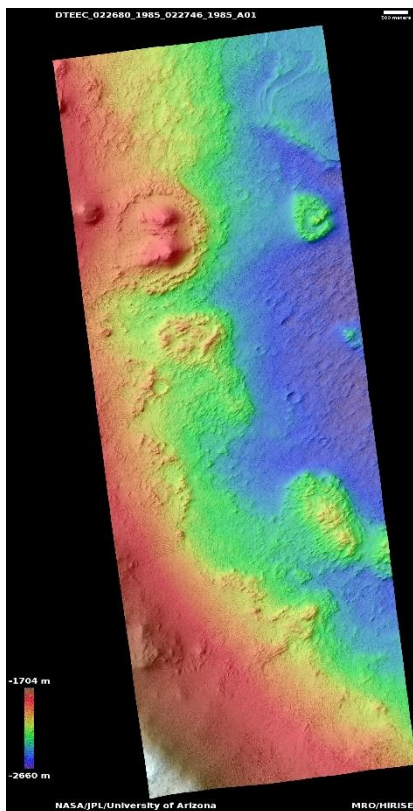
[https://www.uahirise.org/dtm/dtm.php?](https://www.uahirise.org/dtm/dtm.php?ID=PSP_001981_1825)

[ID=PSP_001981_1825](https://www.uahirise.org/dtm/dtm.php?ID=PSP_001981_1825)



Possible MSL rover landing site near Jezero Crater

DTEEC_022680_1985_022746_1985_A01



18.2°N 77.4°E

DTM Producer: UA | Kris Akers

Stereo Pair:

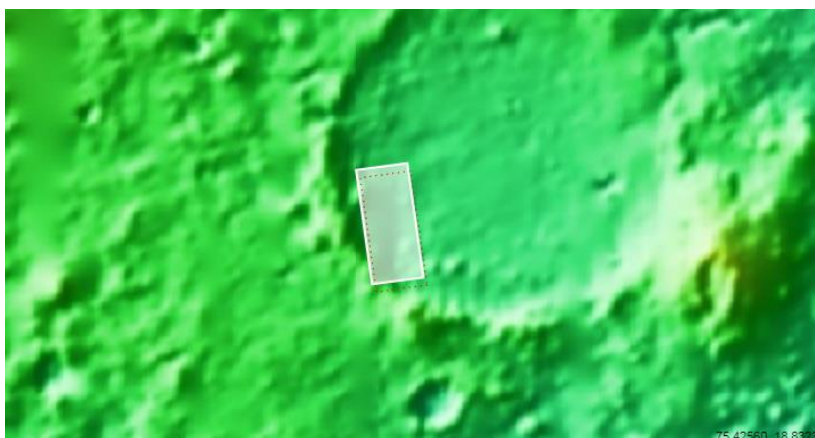
ESP_022680_1985

ESP_022746_1985

For more details about this DTM, visit:

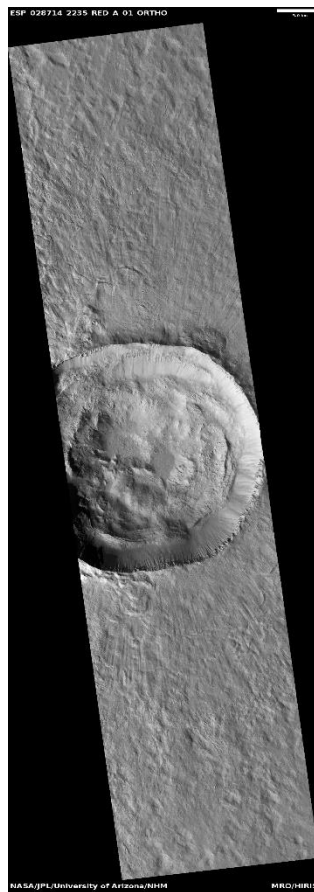
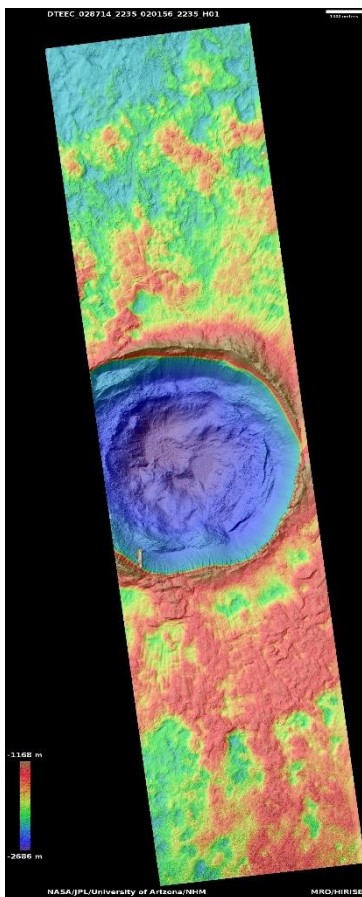
[https://www.uahirise.org/dtm/dtm.php?](https://www.uahirise.org/dtm/dtm.php?ID=ESP_022680_1985)

[ID=ESP_022680_1985](https://www.uahirise.org/dtm/dtm.php?ID=ESP_022680_1985)



Recent 6-kilometer diameter crater in northern plains

DTEEC_028714_2235_020156_2235_H01



43.2°N 225.8°E

DTM Producer: NHM | Joel M Davis

Stereo Pair:

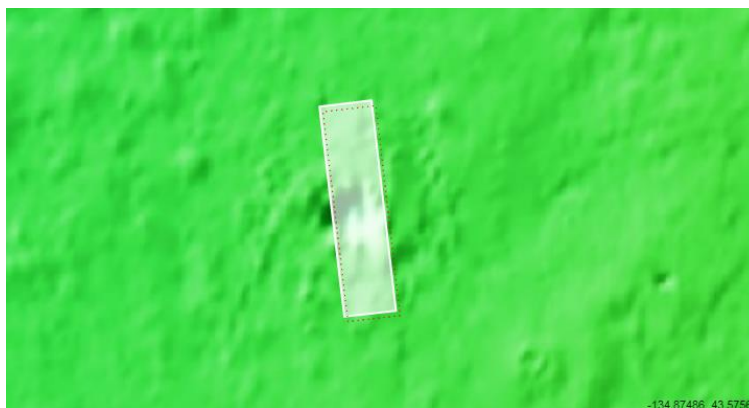
ESP_028714_2235

ESP_020156_2235

For more details about this DTM, visit:

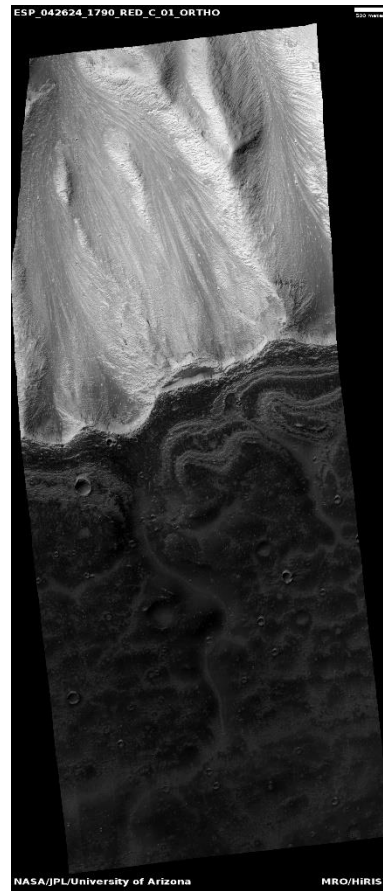
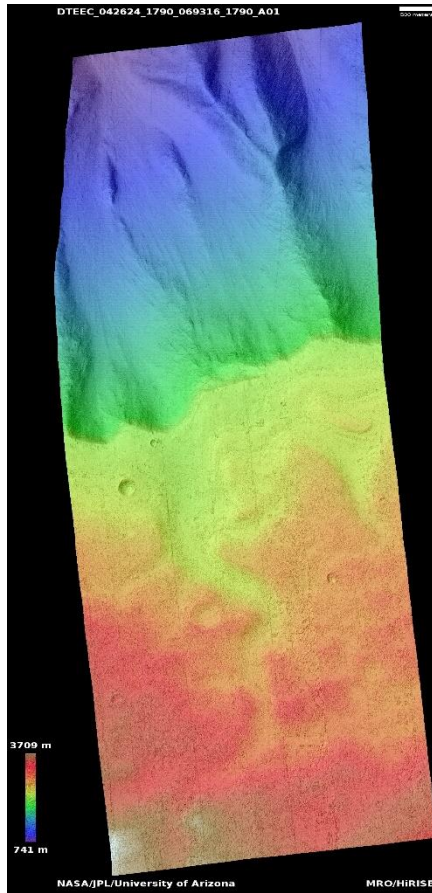
[https://www.uahirise.org/dtm/dtm.php?](https://www.uahirise.org/dtm/dtm.php?ID=ESP_028714_2235)

[ID=ESP_028714_2235](https://www.uahirise.org/dtm/dtm.php?ID=ESP_028714_2235)



Echus Chasma layered deposits

DTEEC_042624_1790_069316_1790_A01



1.0°S 280.7°E

DTM Producer: UA | Kris Akers

Stereo Pair:

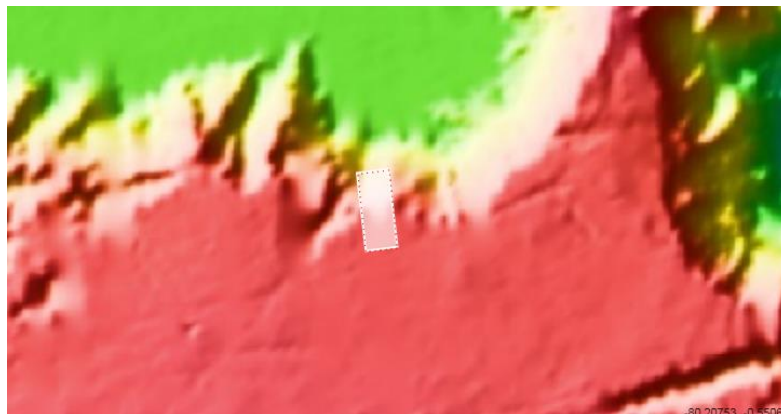
ESP_042624_1790

ESP_069316_1790

For more details about this DTM, visit:

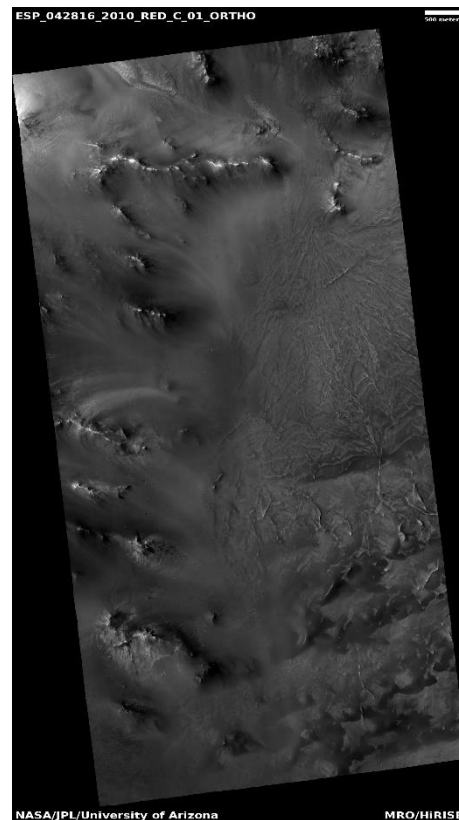
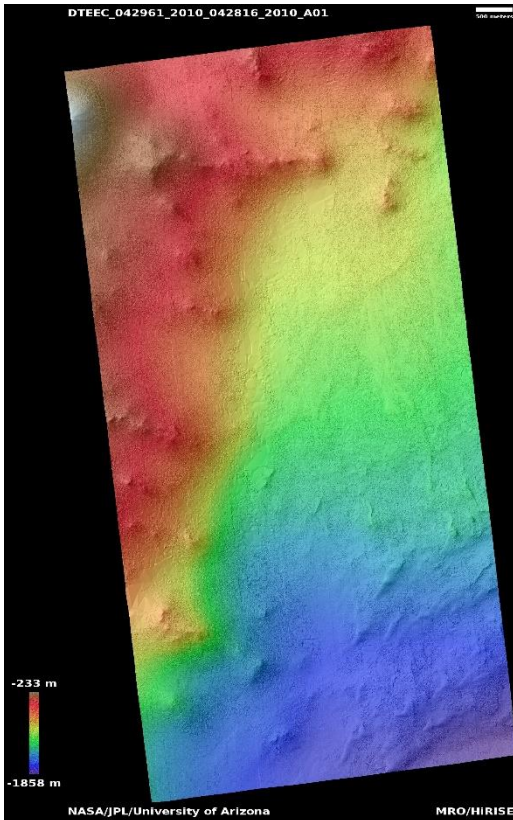
[https://www.uahirise.org/dtm/dtm.php?](https://www.uahirise.org/dtm/dtm.php?ID=ESP_042624_1790)

[ID=ESP_042624_1790](https://www.uahirise.org/dtm/dtm.php?ID=ESP_042624_1790)



Depositional fan in Hargraves Crater

DTEEC_042961_2010_042816_2010_A01



20.9°N 75.4°E

DTM Producer: UA | Kris Akers

Stereo Pair:

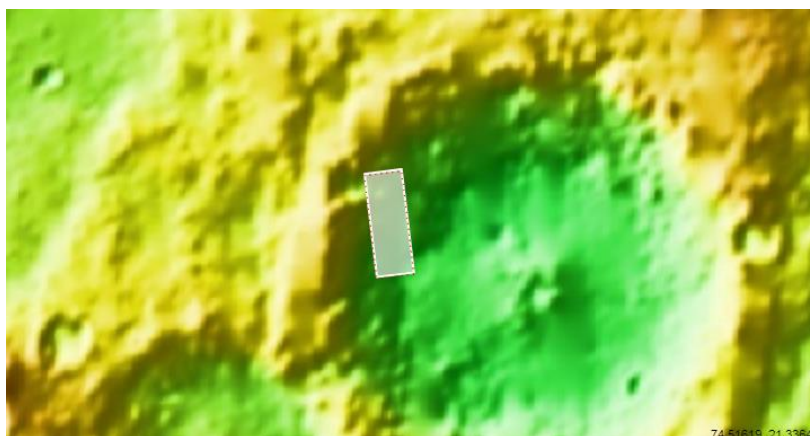
ESP_042961_2010

ESP_042816_2010

For more details about this DTM, visit:

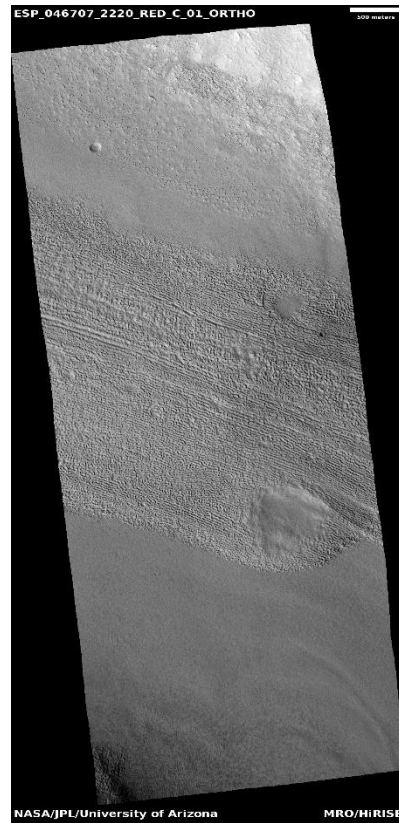
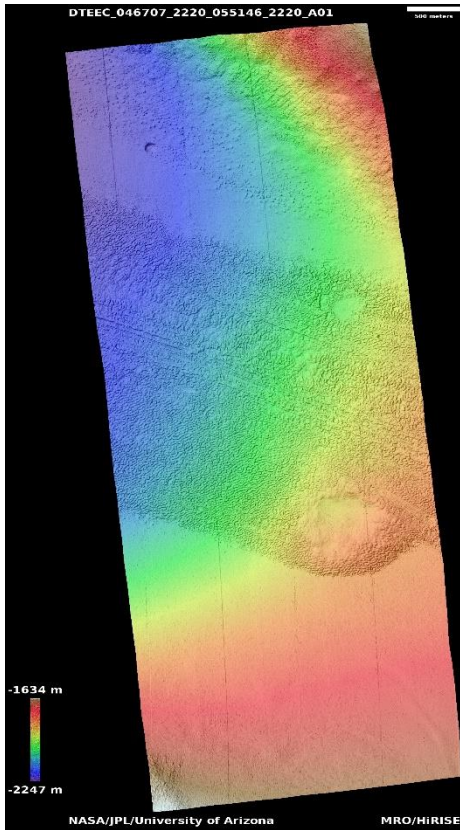
<https://www.uahirise.org/dtm/dtm.php?>

[ID=ESP_042961_2010](https://www.uahirise.org/dtm/dtm.php?ID=ESP_042961_2010)



Candidate recent impact site

DTEEC_046707_2220_055146_2220_A01



41.5°N 48.8°E

DTM Producer: UA | Kris Akers

Stereo Pair:

ESP_046707_2220

ESP_055146_2220

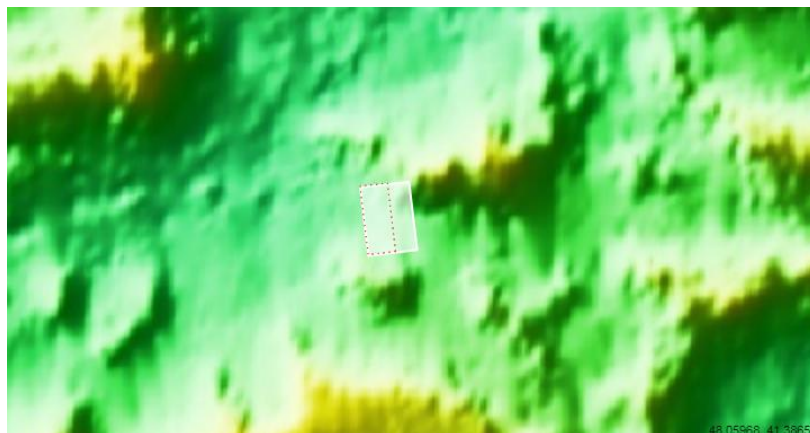
Extra Ortho:

ESP_060698_2220

For more details about this DTM, visit:

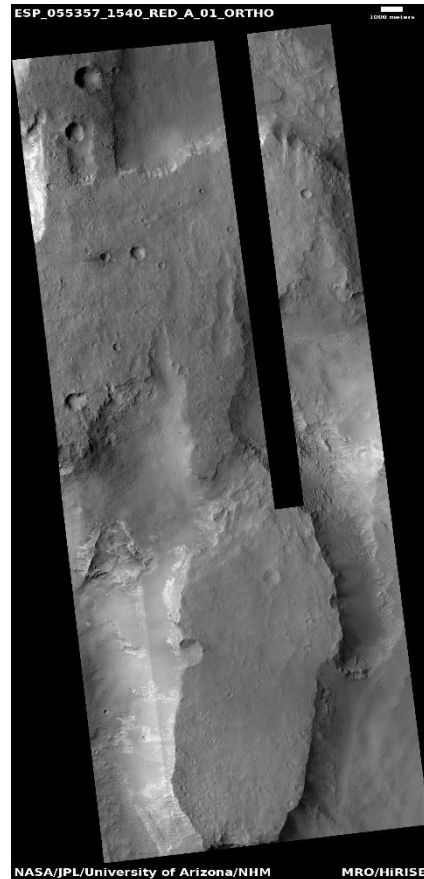
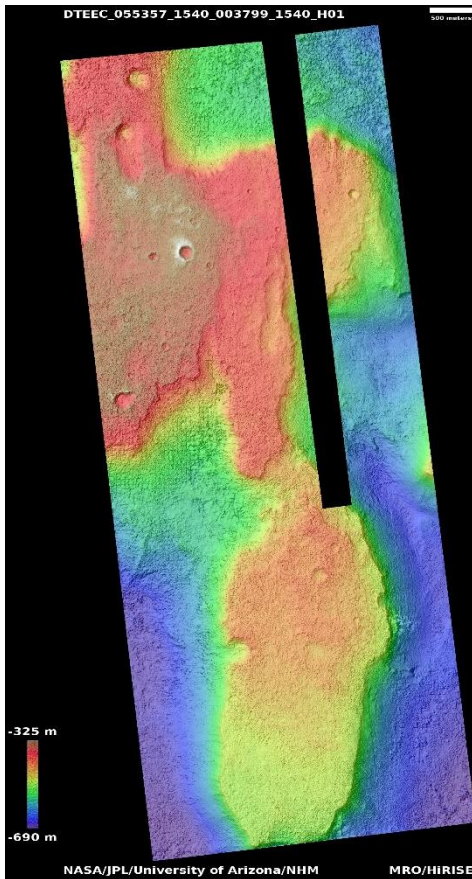
<https://www.uahirise.org/dtm/dtm.php?>

[ID=ESP_046707_2220](https://www.uahirise.org/dtm/dtm.php?ID=ESP_046707_2220)



Cross-bedding in layers on steep scarp

DTEEC_055357_1540_003799_1540_H01



25.9°S 54.3°E

DTM Producer: NHM | Joel M Davis

Stereo Pair:

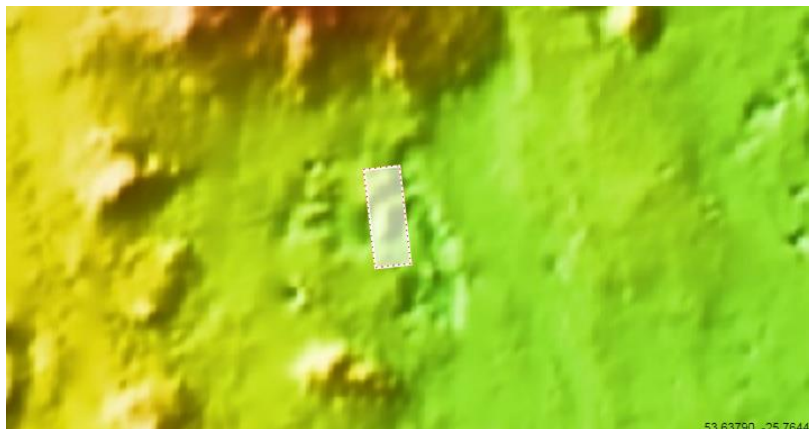
ESP_055357_1540

PSP_003799_1540

For more details about this DTM, visit:

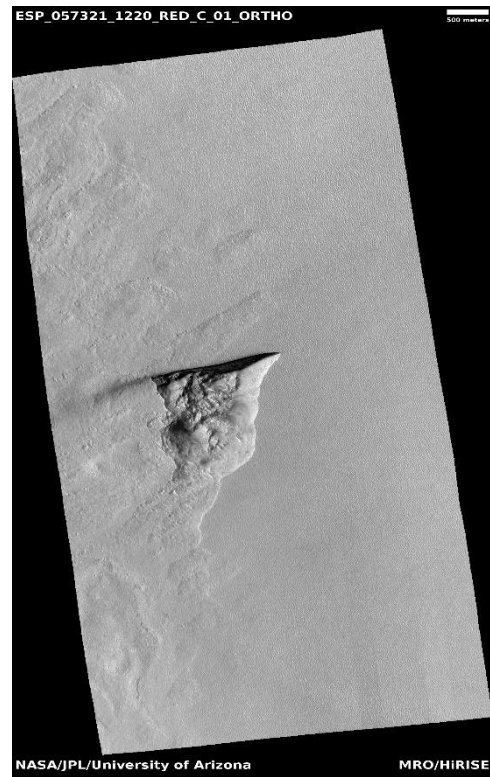
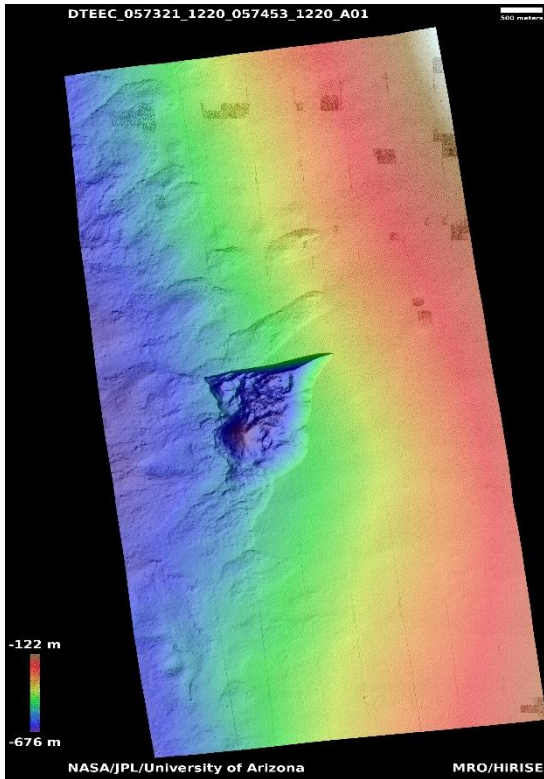
[https://www.uahirise.org/dtm/dtm.php?](https://www.uahirise.org/dtm/dtm.php?ID=ESP_055357_1540)

[ID=ESP_055357_1540](https://www.uahirise.org/dtm/dtm.php?ID=ESP_055357_1540)



Scarp

DTEEC_057321_1220_057453_1220_A01



57.5°S 91.9°E

DTM Producer: UA | Kris Akers

Stereo Pair:

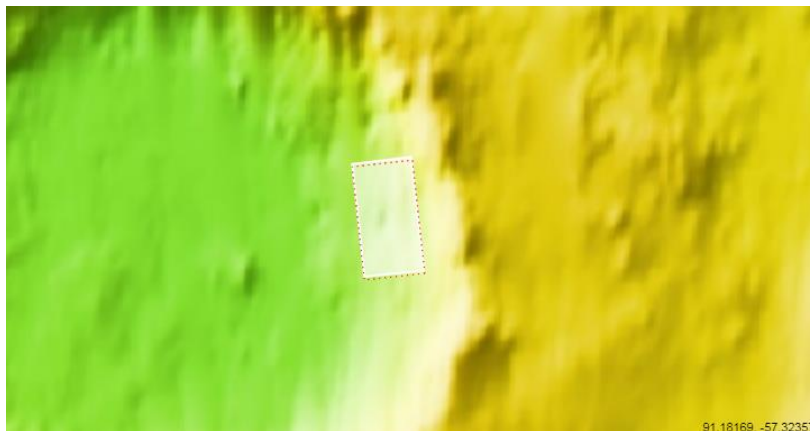
ESP_057321_1220

ESP_057453_1220

Extra Ortho:

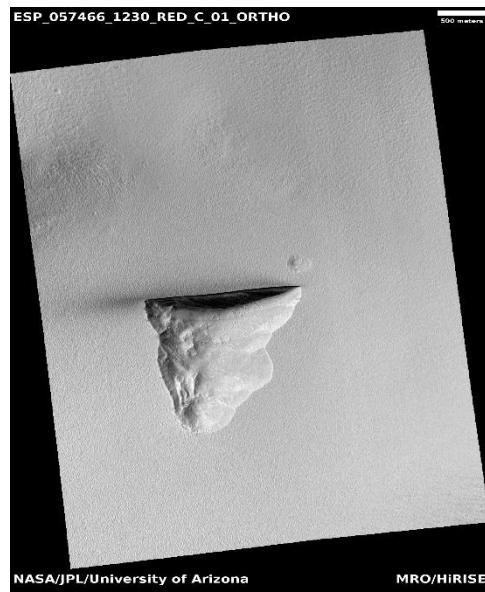
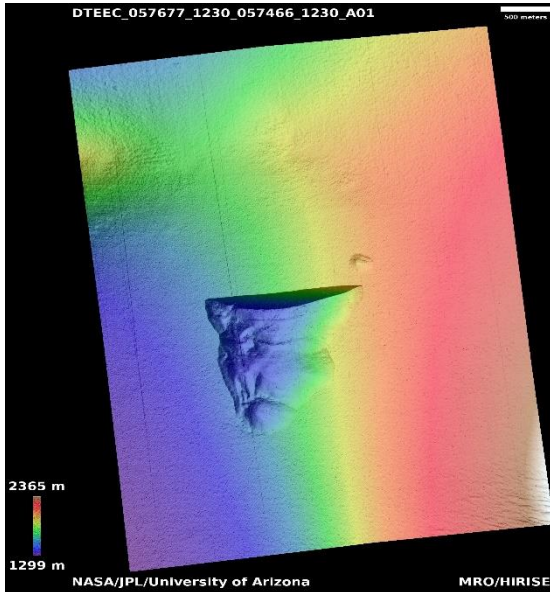
ESP_067027_1220

For more details about this DTM, visit:
https://www.uahirise.org/dtm/dtm.php?ID=ESP_057321_1220



Scarp in mid-latitude mantle

DTEEC_057677_1230_057466_1230_A01



56.9°S 96.3°E

DTM Producer: UA | Shavonne Morin

Stereo Pair:

ESP_057677_1230

ESP_057466_1230

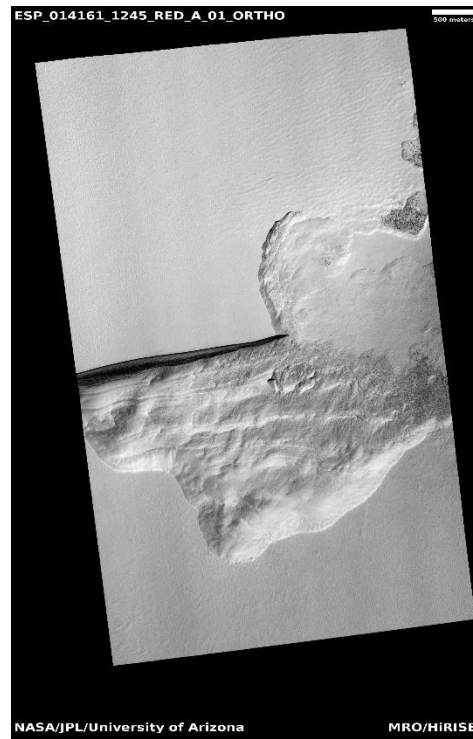
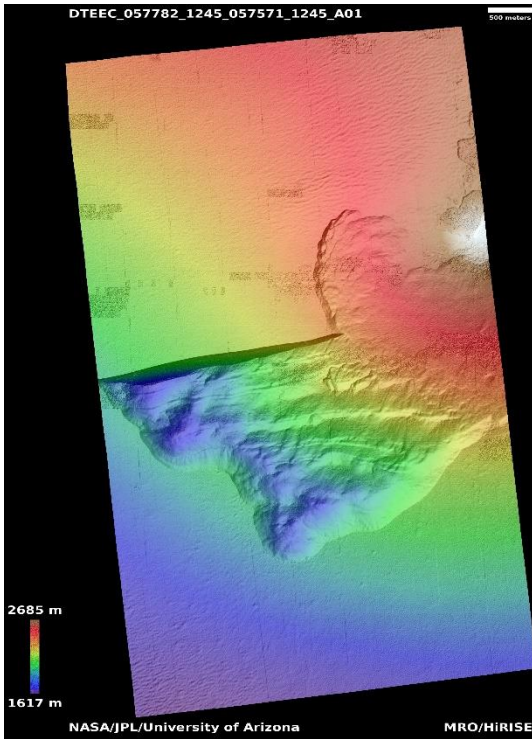
For more details about this DTM, visit:

https://www.uahirise.org/dtm/dtm.php?ID=ESP_057677_1230



Erosional scarp in mid-latitude mantle

DTEEC_057782_1245_057571_1245_A01



55.1°S 109.4°E

DTM Producer: UA | Kris Akers

Stereo Pair:

ESP_057782_1245

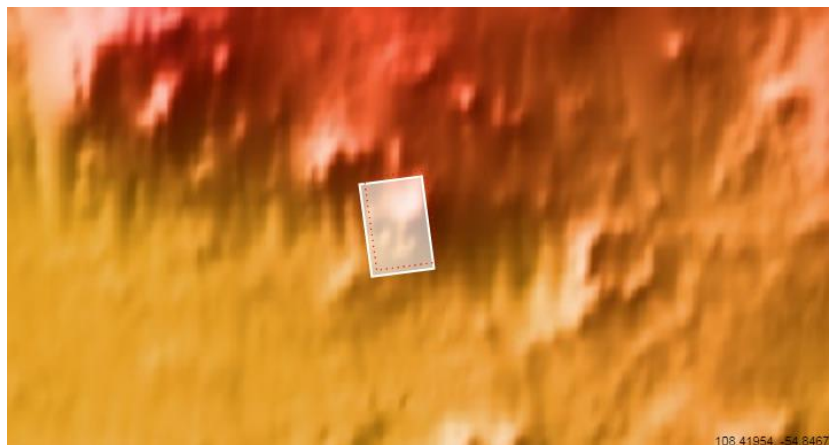
ESP_057571_1245

Extra Orthos:

ESP_014161_1245

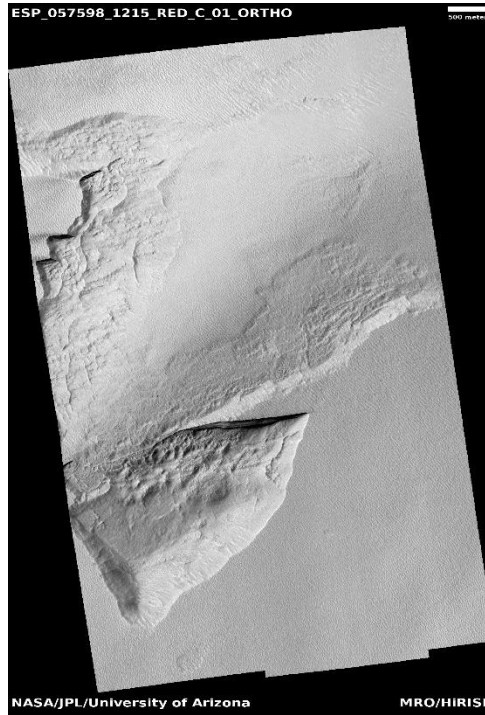
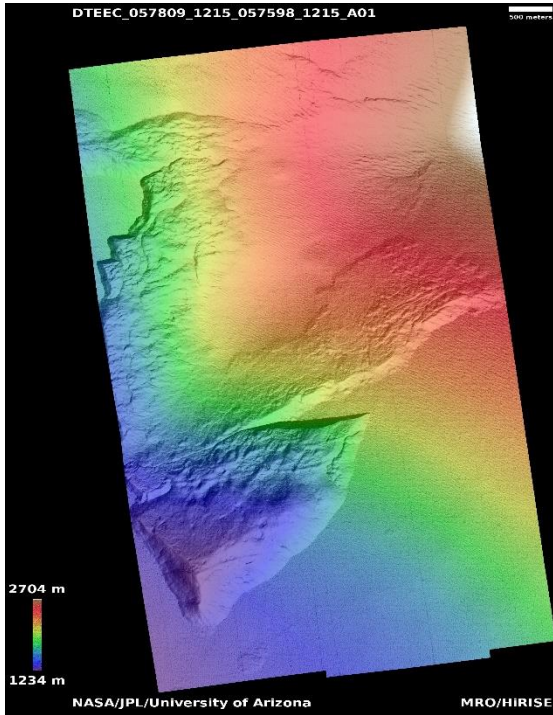
ESP_066934_1245

For more details about this DTM, visit:
https://www.uahirise.org/dtm/dtm.php?ID=ESP_057782_1245



Scarp in mid-latitudes

DTEEC_057809_1215_057598_1215_A01



58.1°S 93.7°E

DTM Producer: UA | Shavonne Morin

Stereo Pair:

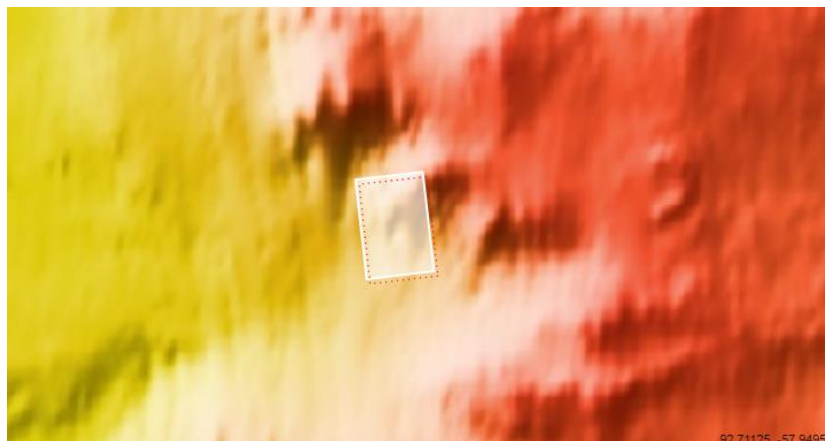
ESP_057809_1215

ESP_057598_1215

Extra Ortho:

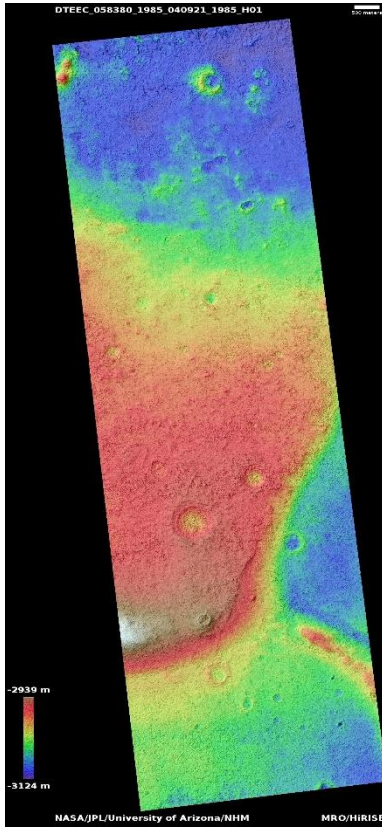
ESP_023115_1215

For more details about this DTM, visit:
https://www.uahirise.org/dtm/dtm.php?ID=ESP_057809_1215



Candidate ExoMars landing site in Oxia Palus

DTEEC_058380_1985_040921_1985_H01



18.2°N 355.3°E

DTM Producer: NHM | Joel M Davis

Stereo Pair:

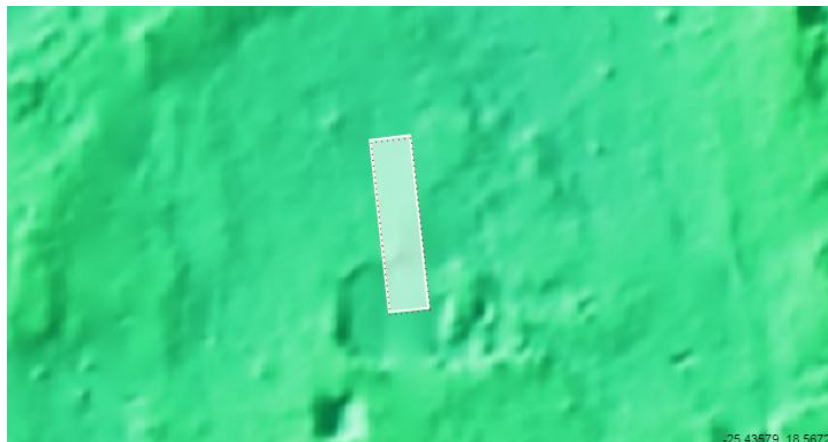
ESP_058380_1985

ESP_040921_1985

For more details about this DTM, visit:

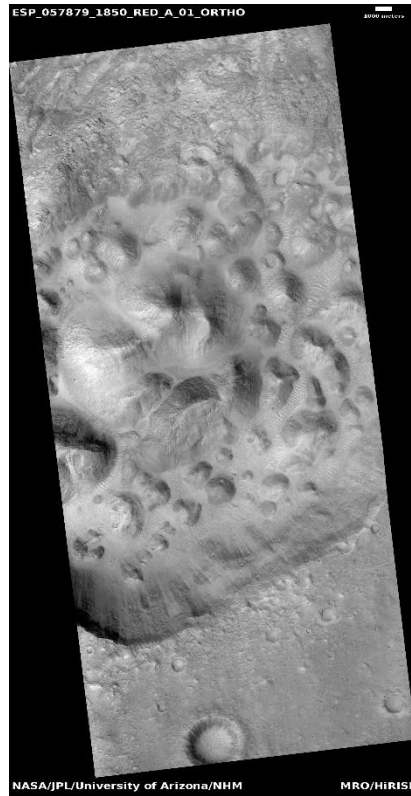
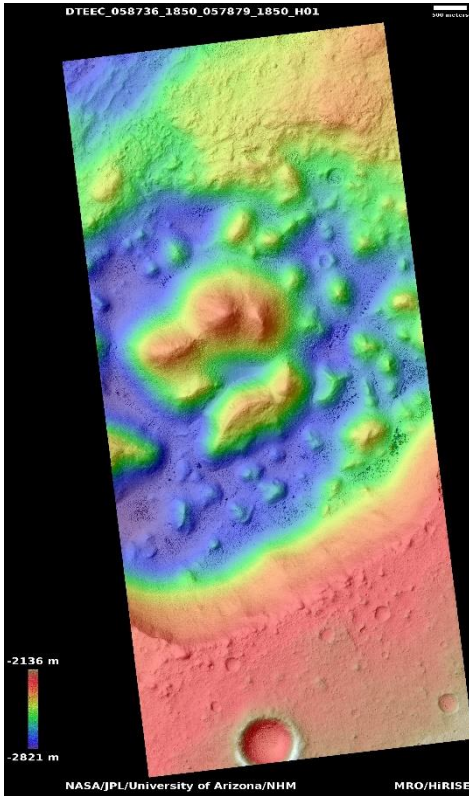
[https://www.uahirise.org/dtm/dtm.php?](https://www.uahirise.org/dtm/dtm.php?ID=ESP_058380_1985)

[ID=ESP_058380_1985](https://www.uahirise.org/dtm/dtm.php?ID=ESP_058380_1985)



Chaos material north of Hydaspis Chaos

DTEEC_058736_1850_057879_1850_H01



4.8°N 335.6°E

DTM Producer: NHM | Joel M Davis

Stereo Pair:

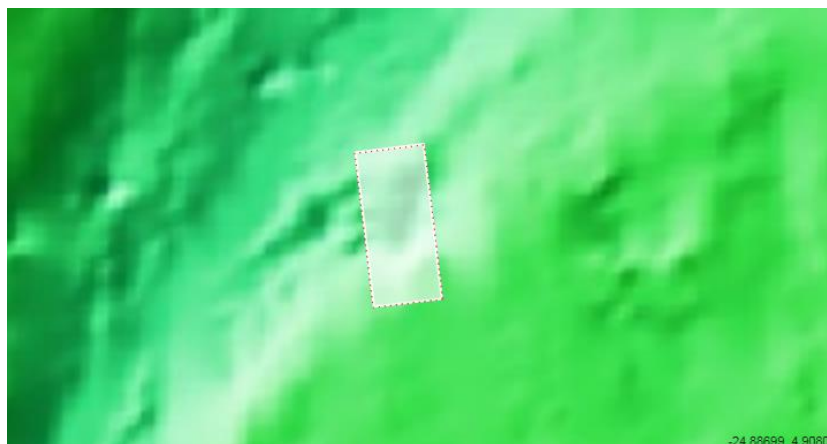
ESP_058736_1850

ESP_057879_1850

For more details about this DTM, visit:

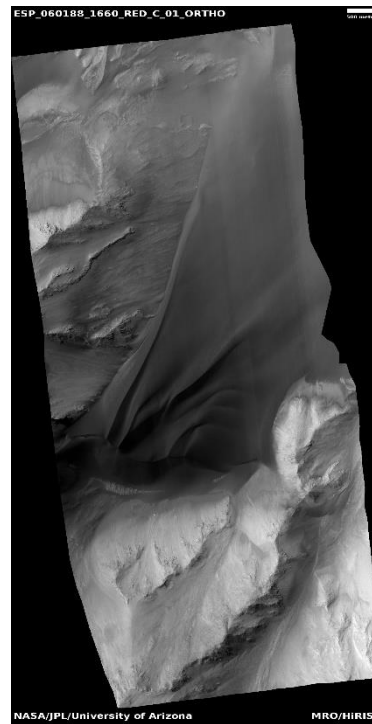
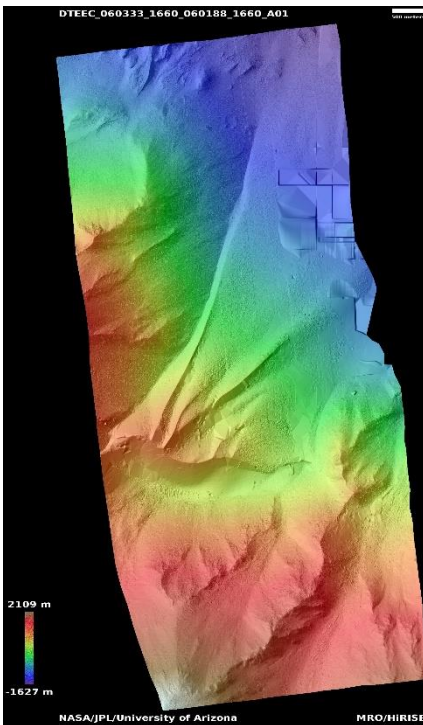
[https://www.uahirise.org/dtm/dtm.php?](https://www.uahirise.org/dtm/dtm.php?ID=ESP_058736_1850)

[ID=ESP_058736_1850](https://www.uahirise.org/dtm/dtm.php?ID=ESP_058736_1850)



Dunes and steep slopes in Coprates Chasma

DTEEC_060333_1660_060188_1660_A01



13.8°S 298.3°E

DTM Producer: UA | Kris Akers

Stereo Pair:

ESP_060333_1660

ESP_060188_1660

Extra Orthos:

ESP_048900_1660

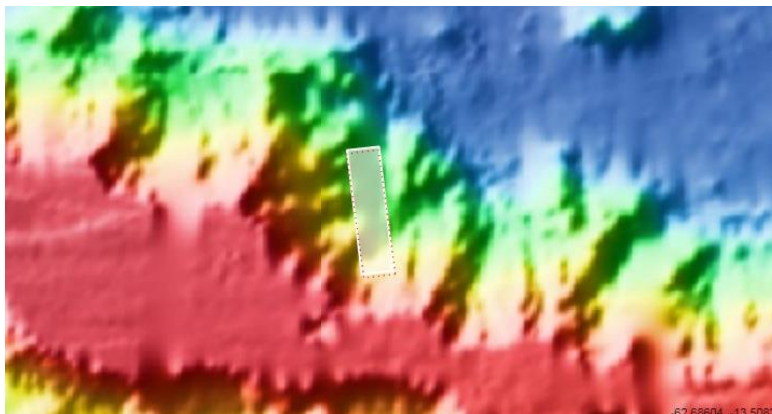
ESP_064790_1660

ESP_062944_1660

ESP_068286_1660

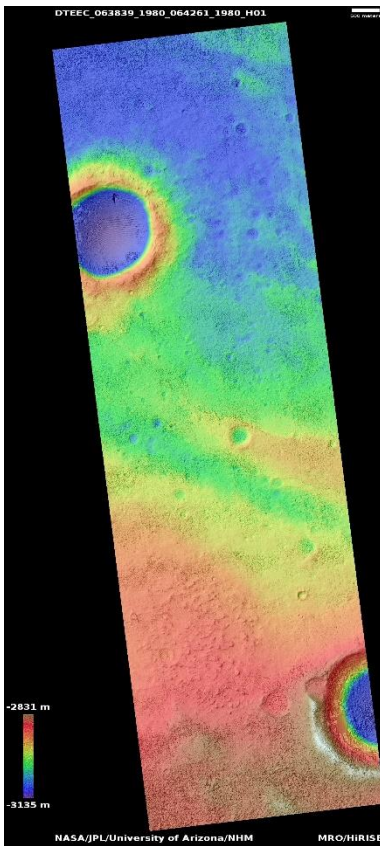
ESP_053726_1660

For more details about this DTM, visit:
https://www.uahirise.org/dtm/dtm.php?ID=ESP_060333_1660



Candidate ExoMars landing site in Oxia Planum

DTEEC_063839_1980_064261_1980_H01



17.8°N 336.0°E

DTM Producer: NHM | Joel M Davis

Stereo Pair:

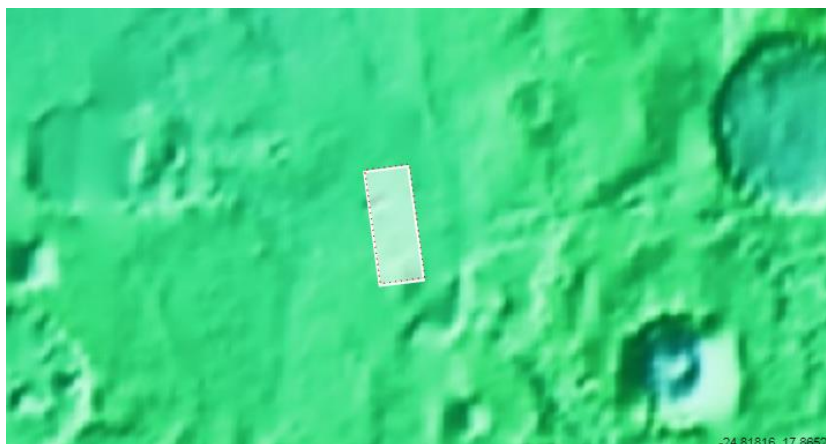
ESP_063839_1980

ESP_064261_1980

For more details about this DTM, visit:

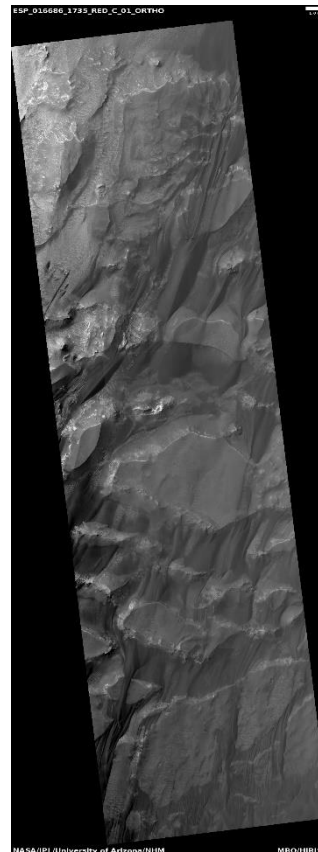
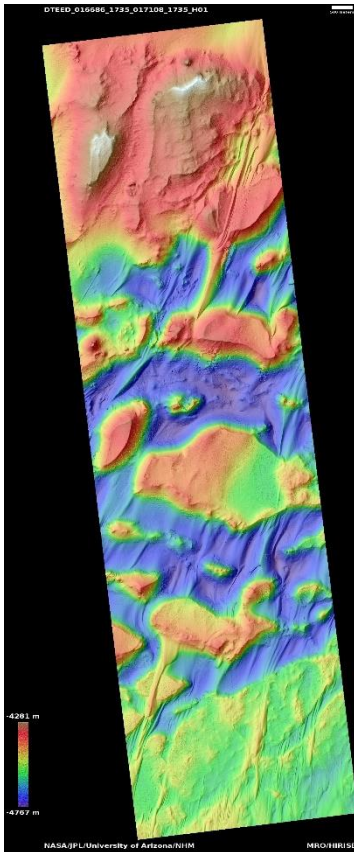
[https://www.uahirise.org/dtm/dtm.php?](https://www.uahirise.org/dtm/dtm.php?ID=ESP_063839_1980)

[ID=ESP_063839_1980](https://www.uahirise.org/dtm/dtm.php?ID=ESP_063839_1980)



Chaos on the floor of Candor Chasma

DTEED_016686_1735_017108_1735_H01



6.5°S 287.5°E

DTM Producer: NHM | Joel M Davis

Stereo Pair:

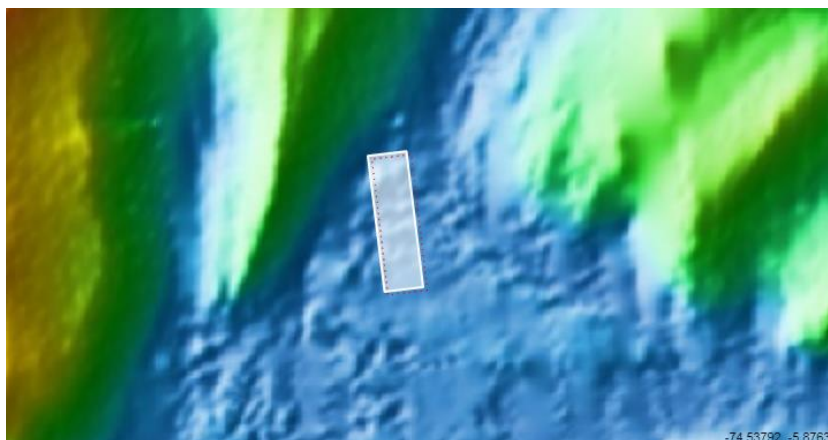
ESP_016686_1735

ESP_017108_1735

For more details about this DTM, visit:

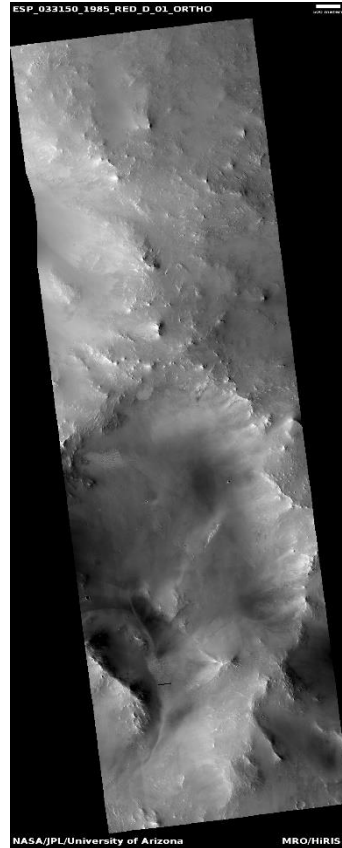
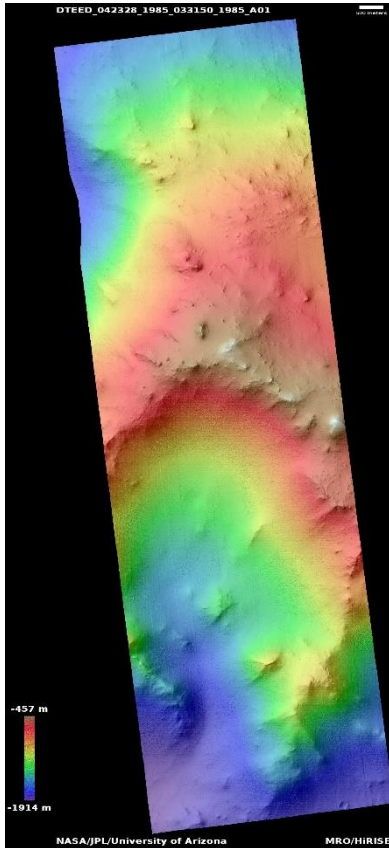
[https://www.uahirise.org/dtm/dtm.php?](https://www.uahirise.org/dtm/dtm.php?ID=ESP_016686_1735)

[ID=ESP_016686_1735](https://www.uahirise.org/dtm/dtm.php?ID=ESP_016686_1735)



Hill southeast of Jezero Crater

DTEED_042328_1985_033150_1985_A01



18.2°N 78.2°E

DTM Producer: UA | Kris Akers

Stereo Pair:

ESP_042328_1985

ESP_033150_1985

For more details about this DTM, visit:
https://www.uahirise.org/dtm/dtm.php?ID=ESP_042328_1985

