



## HIGH RESOLUTION IMAGING SCIENCE EXPERIMENT



# DTM PDS RELEASES

*January 2022*

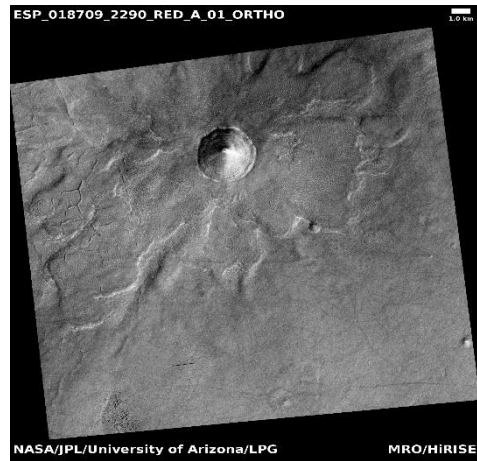
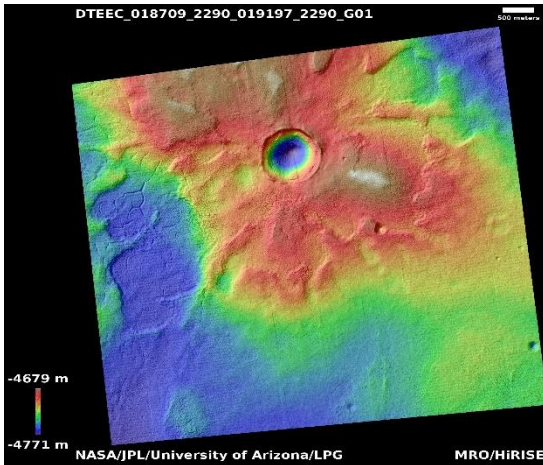
Edited by Kris Akers | UA

### DTMs Included this Month

Crater ejecta lower than plains.....	1
Libya Montes layered deposits and possible MSL rover landing site.....	2
Arkhangelsky Crater dunes.....	3
Gully monitoring in Roseau Crater.....	4
Lithified dunes.....	5
Gullies.....	6
Barchan dunes in Dulovo Crater region.....	7
Alcoves on south polar layered deposit scarp.....	8
Eastern edge of polar pit gullies.....	9

# Crater ejecta lower than plains

DTEEC\_018709\_2290\_019197\_2290\_G01



43.7°N 127.6°E

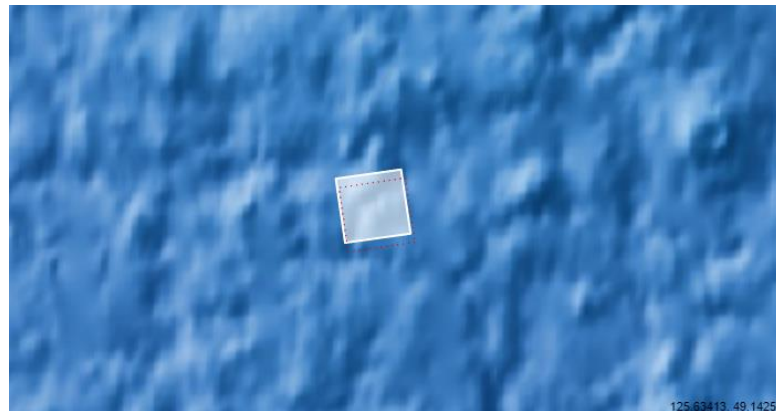
DTM Producer: LPG | Axel Noblet

Stereo Pair:

ESP\_018709\_2290

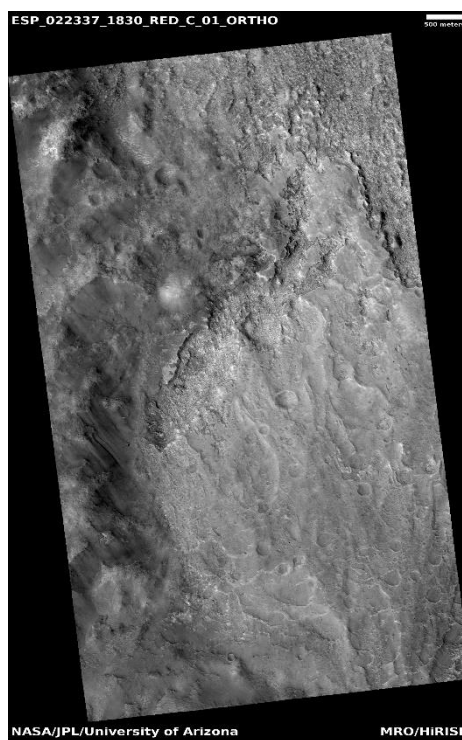
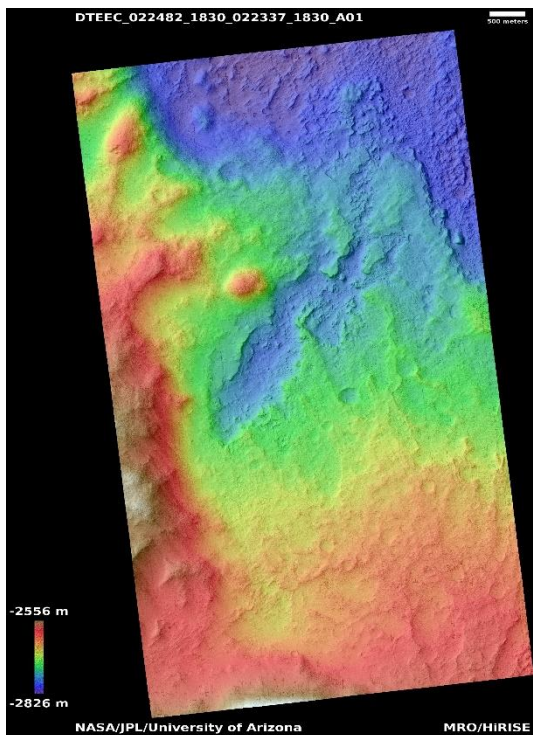
ESP\_019197\_2290

For more details about this DTM, visit:  
[https://www.uahirise.org/dtm/dtm.php?ID=ESP\\_018709\\_2290](https://www.uahirise.org/dtm/dtm.php?ID=ESP_018709_2290)



# Libya Montes layered deposits and possible MSL rover landing site

DTEEC\_022482\_1830\_022337\_1830\_A01



2.8°N 85.7°E

DTM Producer: UA | Kris Akers

Stereo Pair:

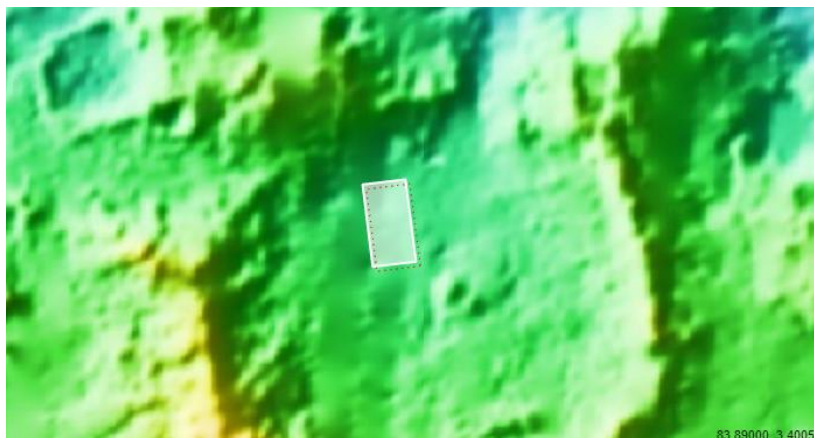
ESP\_022482\_1830

ESP\_022337\_1830

For more details about this DTM, visit:

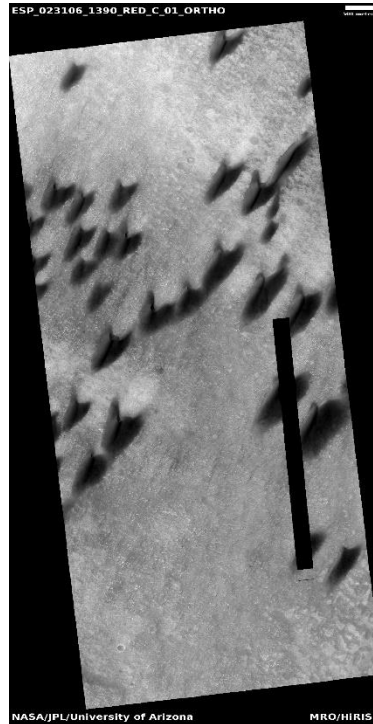
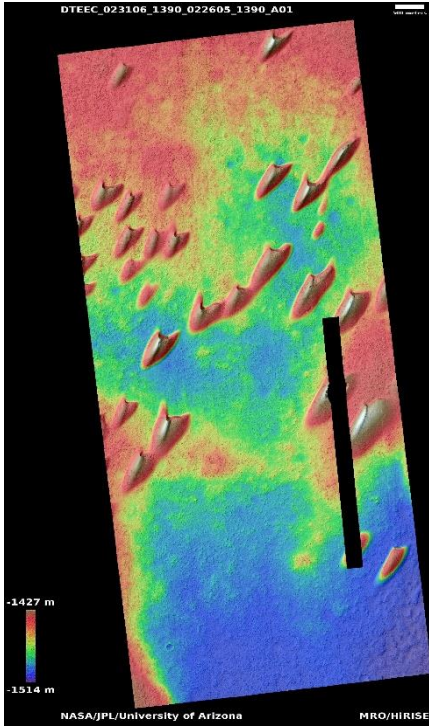
[https://www.uahirise.org/dtm/dtm.php?](https://www.uahirise.org/dtm/dtm.php?ID=ESP_022482_1830)

[ID=ESP\\_022482\\_1830](https://www.uahirise.org/dtm/dtm.php?ID=ESP_022482_1830)



# Arkhangelsky Crater dunes

DTEEC\_023106\_1390\_022605\_1390\_A01



40.8°S 335.2°E

DTM Producer: UA | Kris Akers

Stereo Pair:

ESP\_023106\_1390

ESP\_022605\_1390

Extra Orthos:

PSP\_022605\_1390

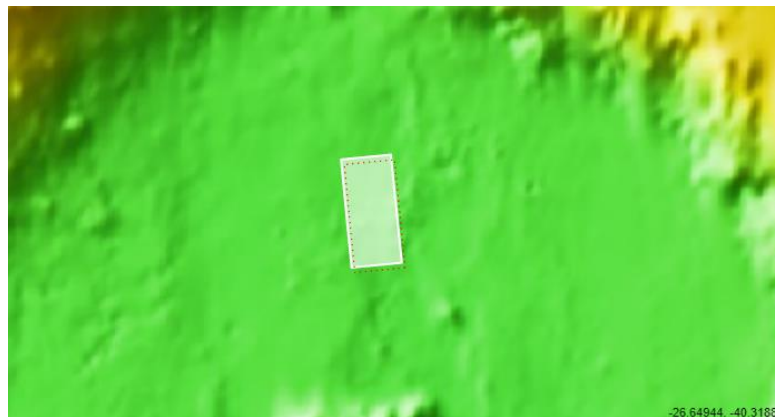
ESP\_054938\_1390

ESP\_057312\_1390

ESP\_063813\_1390

For more details about this DTM, visit:

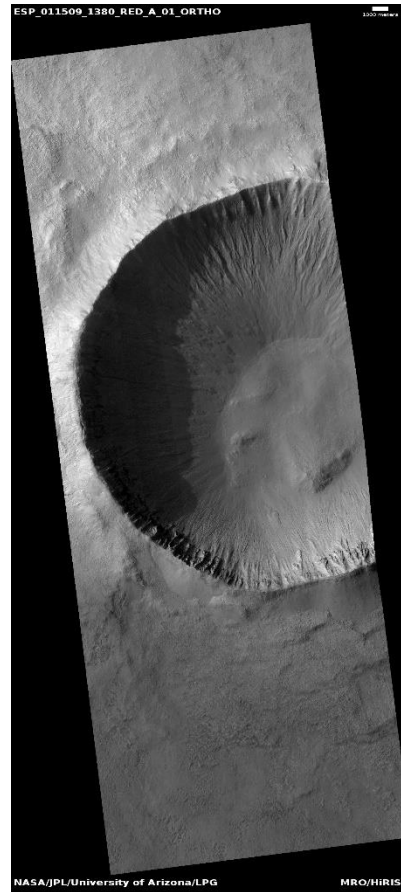
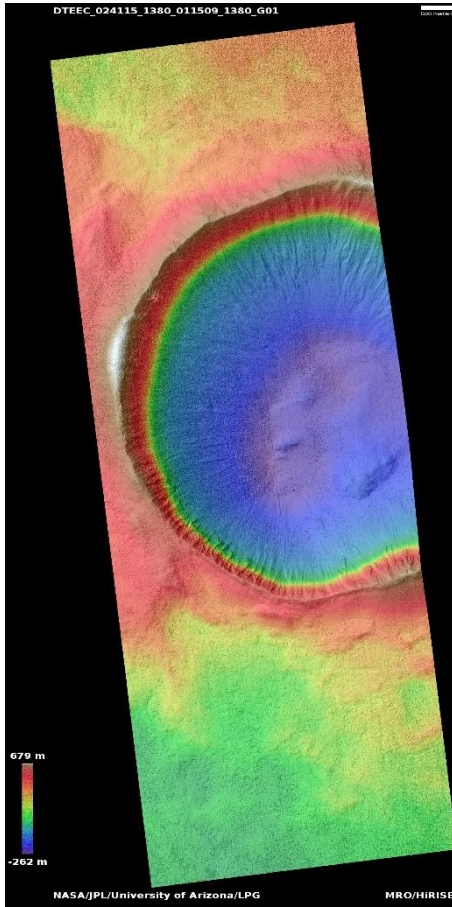
[https://www.uahirise.org/dtm/dtm.php?ID=ESP\\_023106\\_1390](https://www.uahirise.org/dtm/dtm.php?ID=ESP_023106_1390)





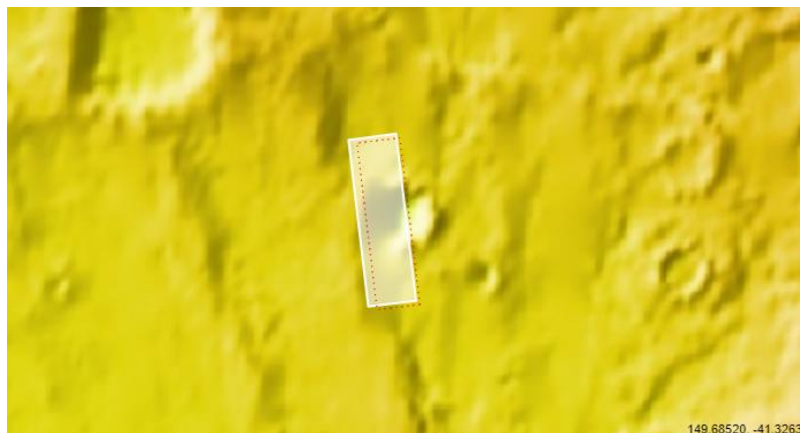
# Gully monitoring in Roseau Crater

DTEEC\_024115\_1380\_011509\_1380\_G01



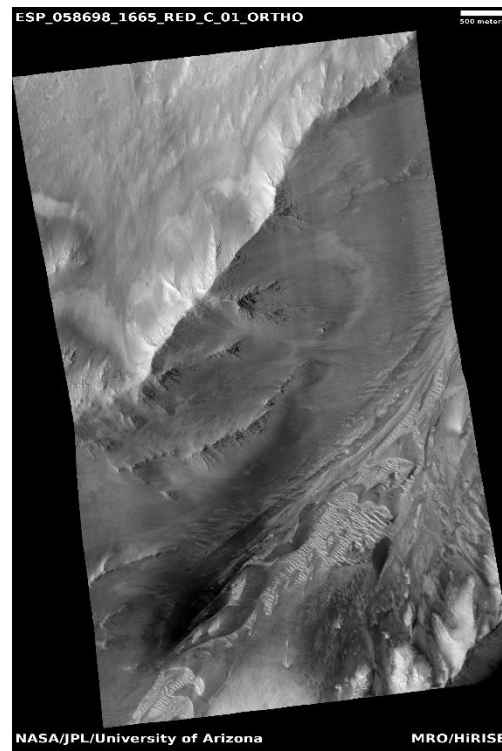
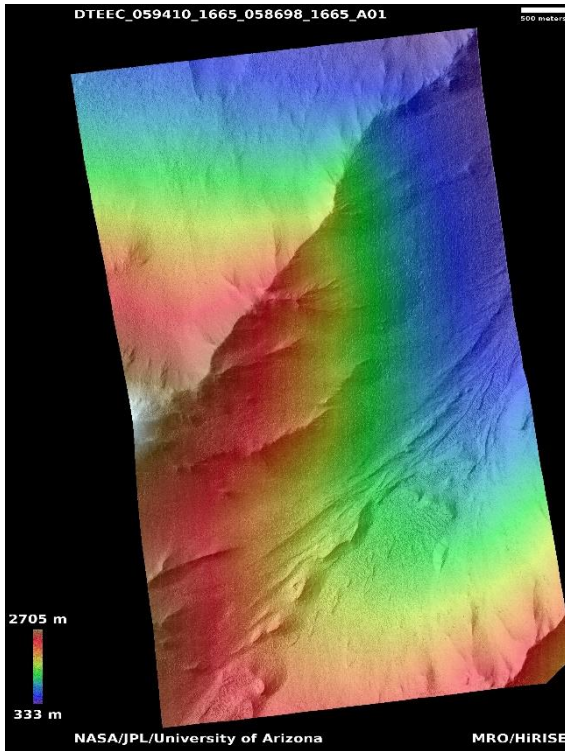
41.7°S 150.6°E  
DTM Producer: LPG | Alex Noblet  
Stereo Pair:  
ESP\_024115\_1380  
ESP\_011509\_1380

For more details about this DTM, visit:  
[https://www.uahirise.org/dtm/dtm.php?ID=ESP\\_024115\\_1380](https://www.uahirise.org/dtm/dtm.php?ID=ESP_024115_1380)



# Lithified dunes

DTEEC\_059410\_1665\_058698\_1665\_A01



13.2°S 296.0°E

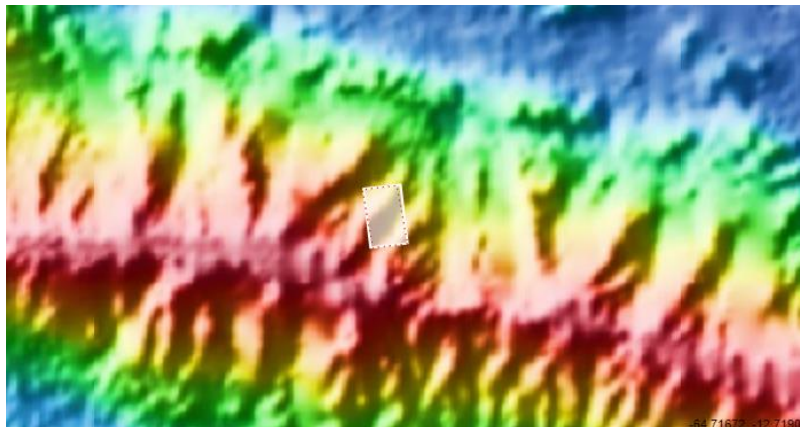
DTM Producer: UA | Kris Akers

Stereo Pair:

ESP\_059410\_1665

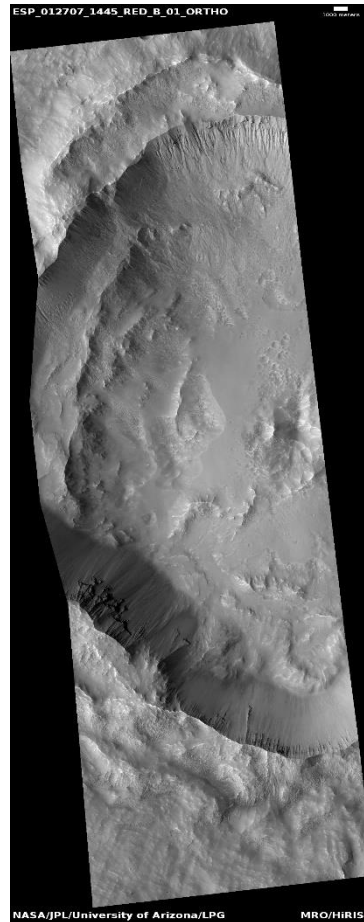
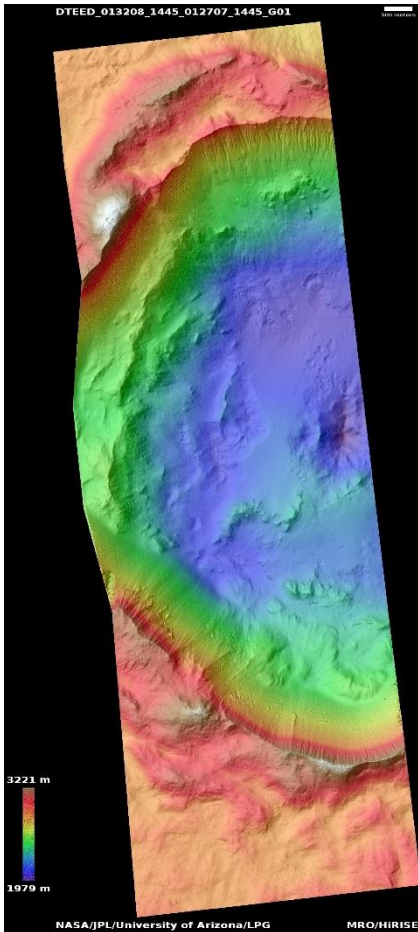
ESP\_058698\_1665

For more details about this DTM, visit:  
[https://www.uahirise.org/dtm/dtm.php?  
ID=ESP\\_059410\\_1665](https://www.uahirise.org/dtm/dtm.php?ID=ESP_059410_1665)



# Gullies

DTEED\_013208\_1445\_012707\_1445\_G01



35.4°S 201.6°E

DTM Producer: LPG | Alex Noblet

Stereo Pair:

ESP\_013208\_1445

ESP\_012707\_1445

For more details about this DTM, visit:  
[https://www.uahirise.org/dtm/dtm.php?](https://www.uahirise.org/dtm/dtm.php?ID=ESP_013208_1445)

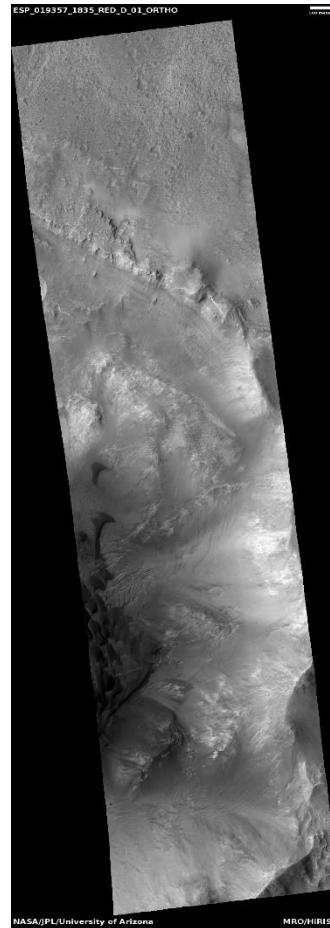
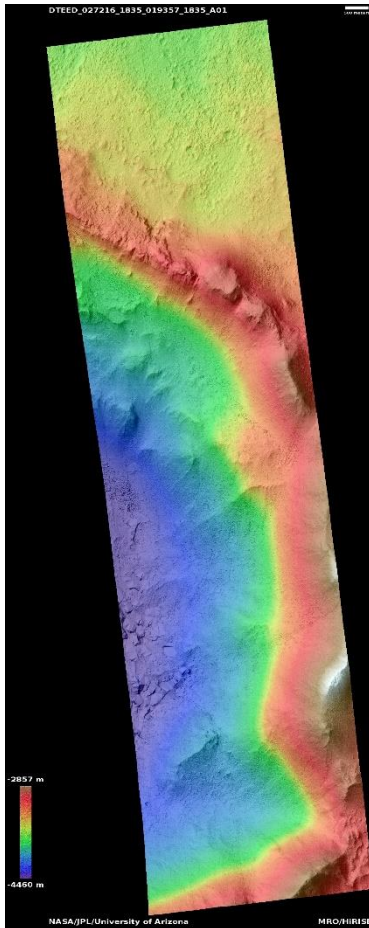
[ID=ESP\\_013208\\_1445](https://www.uahirise.org/dtm/dtm.php?ID=ESP_013208_1445)





# Barchan dunes in Dulovo Crater region

DTEED\_027216\_1835\_019357\_1835\_A01



3.7°N 84.6°E

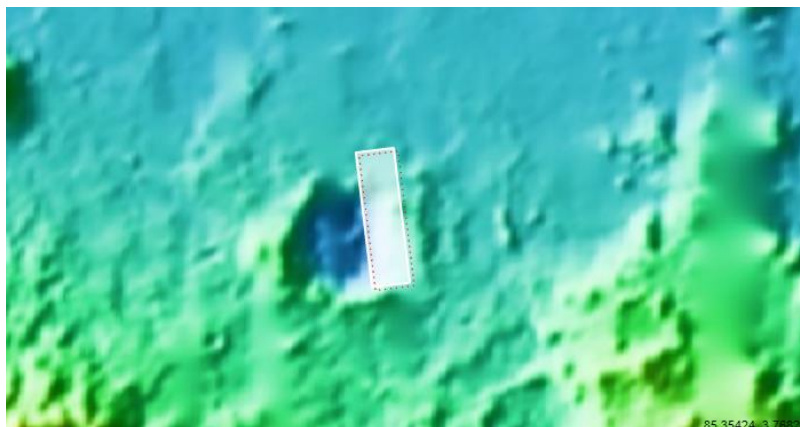
DTM Producer: UA | Kris Akers

Stereo Pair:

ESP\_027216\_1835

ESP\_019357\_1835

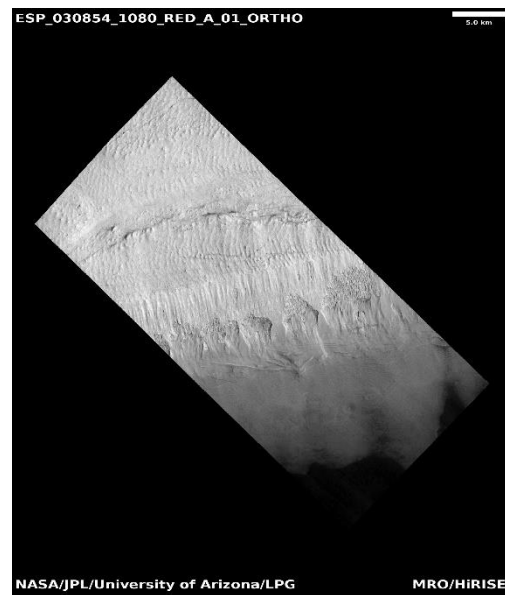
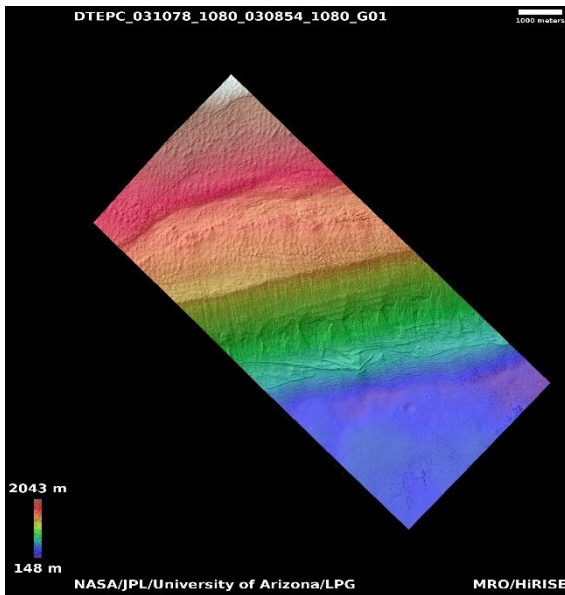
For more details about this DTM, visit:  
[https://www.uahirise.org/dtm/dtm.php?  
ID=ESP\\_027216\\_1835](https://www.uahirise.org/dtm/dtm.php?ID=ESP_027216_1835)





# Alcoves on south polar layered deposit scarp

DTEPC\_031078\_1080\_030854\_1080\_G01



72.0°S 144.1°E

DTM Producer: LPG | Alex Noblet

Stereo Pair:

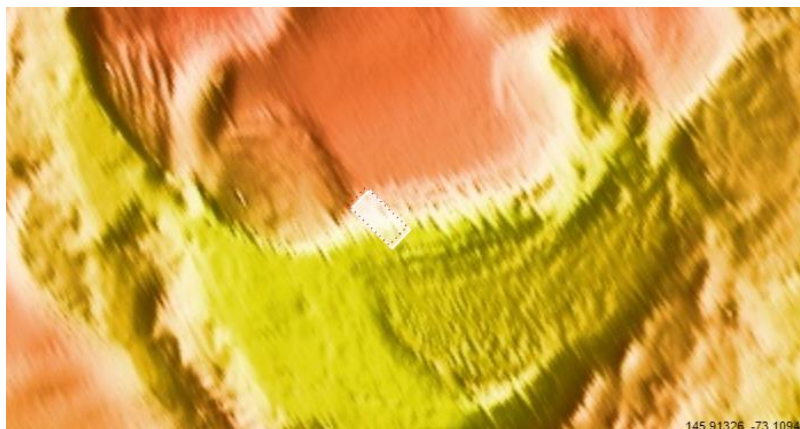
ESP\_031078\_1080

ESP\_030854\_1080

For more details about this DTM, visit:

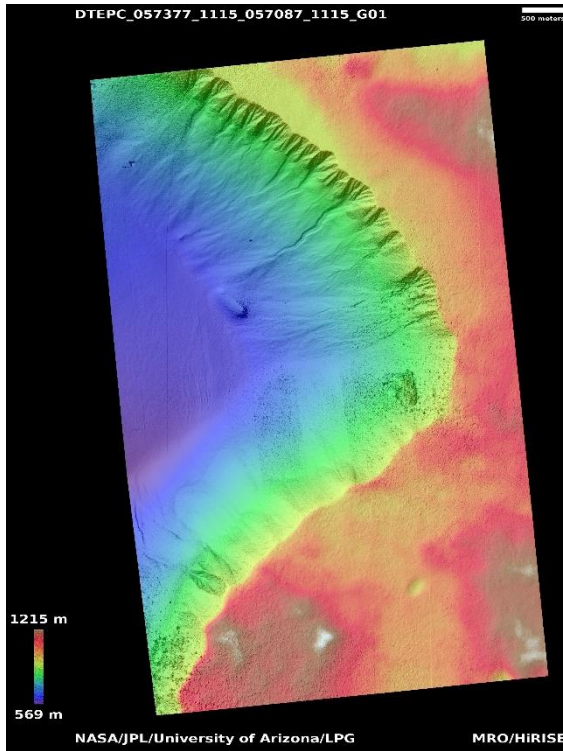
[https://www.uahirise.org/dtm/dtm.php?](https://www.uahirise.org/dtm/dtm.php?ID=ESP_031078_1080)

[ID=ESP\\_031078\\_1080](https://www.uahirise.org/dtm/dtm.php?ID=ESP_031078_1080)



# Eastern edge of polar pit gullies

DTEPC\_057377\_1115\_057087\_1115\_G01



68.4°S 1.8°E

DTM Producer: LPG | Axel Noblet

Stereo Pair:

ESP\_057377\_1115

ESP\_057087\_1115

For more details about this DTM, visit:  
[https://www.uahirise.org/dtm/dtm.php?](https://www.uahirise.org/dtm/dtm.php?ID=ESP_057377_1115)

[ID=ESP\\_057377\\_1115](https://www.uahirise.org/dtm/dtm.php?ID=ESP_057377_1115)

