



**HIGH RESOLUTION IMAGING
SCIENCE EXPERIMENT**



DTM PDS RELEASES

February 2023

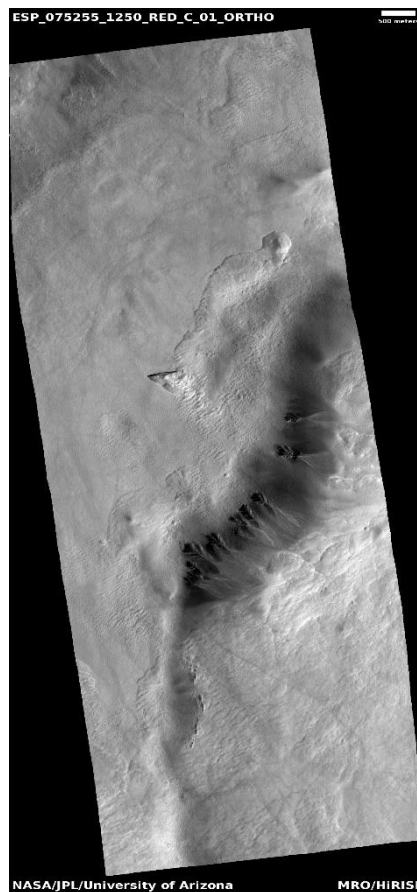
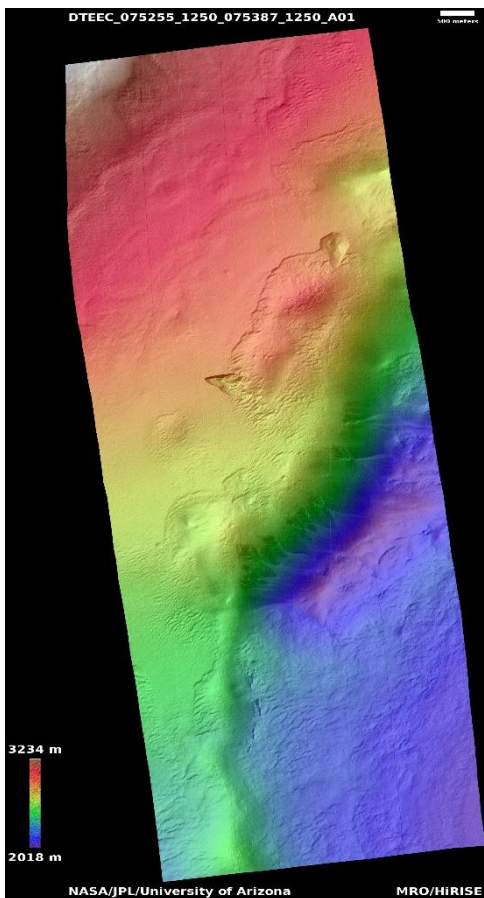
Edited by Kris Akers | UA

DTMs Included this Month

| | |
|---------------------------------------------------|---|
| Gully and scarp monitoring..... | 1 |
| Stratigraphic relations in scalloped terrain..... | 2 |

Gully and scarp monitoring

DTEEC_075255_1250_075387_1250_A01



54.9°S 137.1°E

DTM Producer: UA | Branden M Gosse

Stereo Pair:

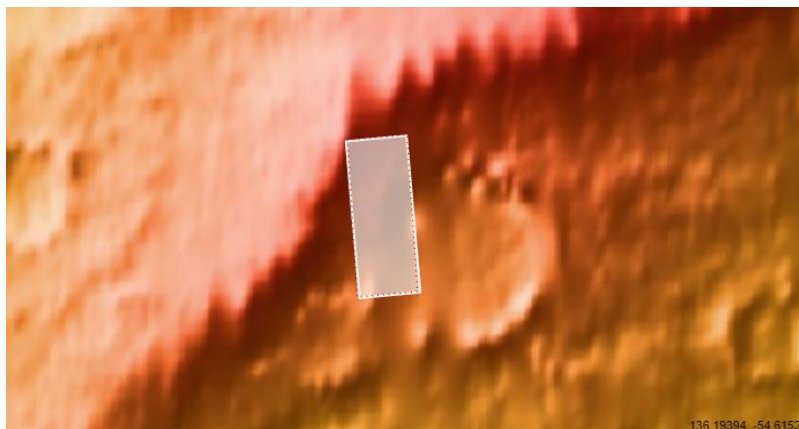
ESP_075255_1250

ESP_075387_1250

For more details about this DTM, visit:

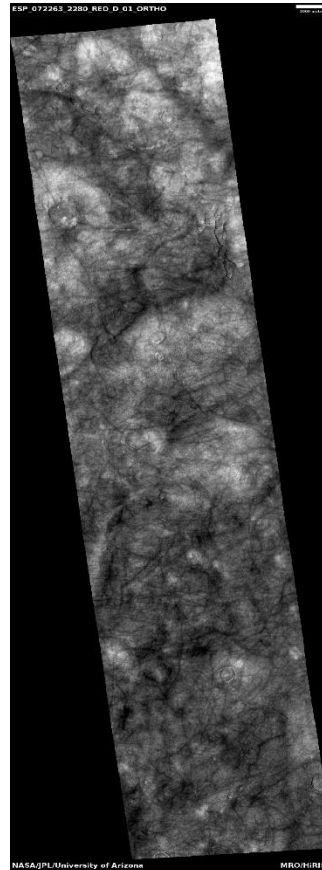
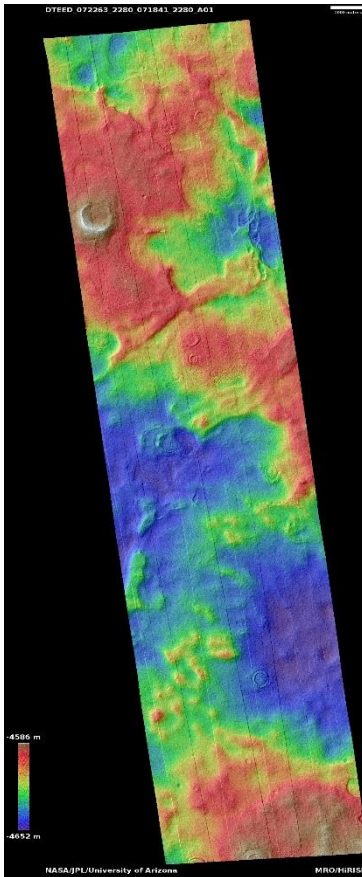
[https://www.uahirise.org/dtm/dtm.php?](https://www.uahirise.org/dtm/dtm.php?ID=ESP_075255_1250)

[ID=ESP_075255_1250](https://www.uahirise.org/dtm/dtm.php?ID=ESP_075255_1250)



Stratigraphic relations in scalloped terrain

DTEED_072263_2280_071841_2280_A01



47.9°N 91.0°E

DTM Producer: UA | Branden M Gosse

Stereo Pair:

ESP_072263_2280

ESP_071841_2280

For more details about this DTM, visit:

[https://www.uahirise.org/dtm/dtm.php?](https://www.uahirise.org/dtm/dtm.php?ID=ESP_072263_2280)

[ID=ESP_072263_2280](https://www.uahirise.org/dtm/dtm.php?ID=ESP_072263_2280)

