



HIGH RESOLUTION IMAGING SCIENCE EXPERIMENT



DTM PDS RELEASES

February 2022

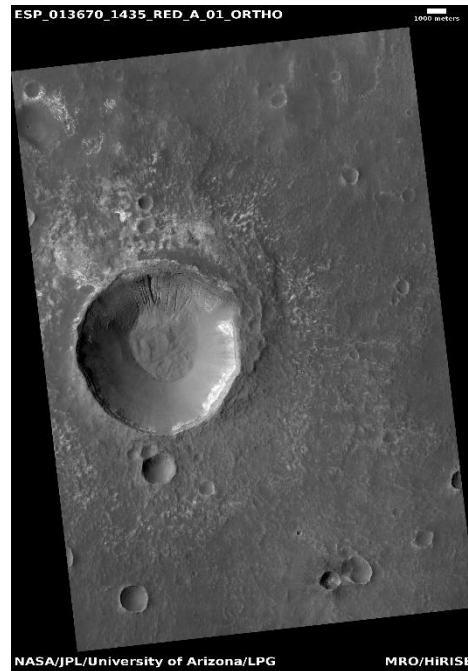
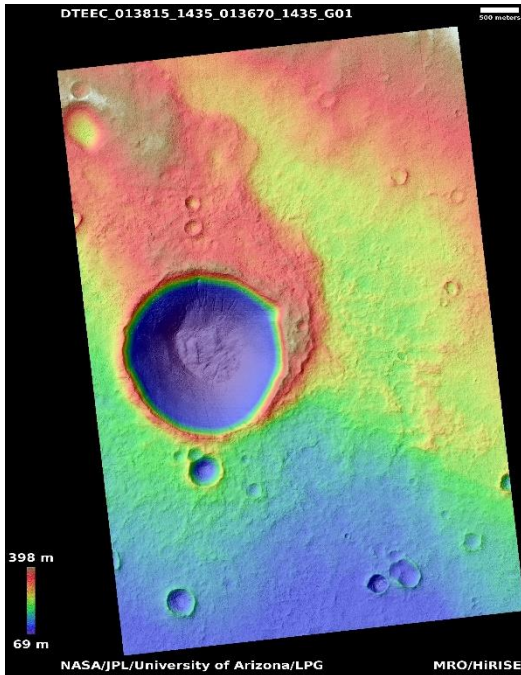
Edited by Kris Akers | UA

DTMs Included this Month

Crater gully morphology.....	1
Chasma Boreale megadunes.....	2
Youthful crater and ejecta as seen in THEMIS image I19322009.....	3
Left rim of gullied crater in Kaiser Crater.....	4
Pits in mid-latitude mantle.....	5
Slope features in Arabia Terra.....	6
Olivine-rich bedrock exposed in crater wall in Tyrrhena Terra.....	7
Scarps in Milankovic Crater.....	8
Multi-pedestal crater on northern plains.....	9
Light-toned gully deposits in Hale Crater.....	10
Flow-like feature within Chryse Planitia.....	11
Gully monitoring.....	12
Polar pit gullies.....	13

Crater gully morphology

DTEEC_013815_1435_013670_1435_G01



36.2°S 190.4°E

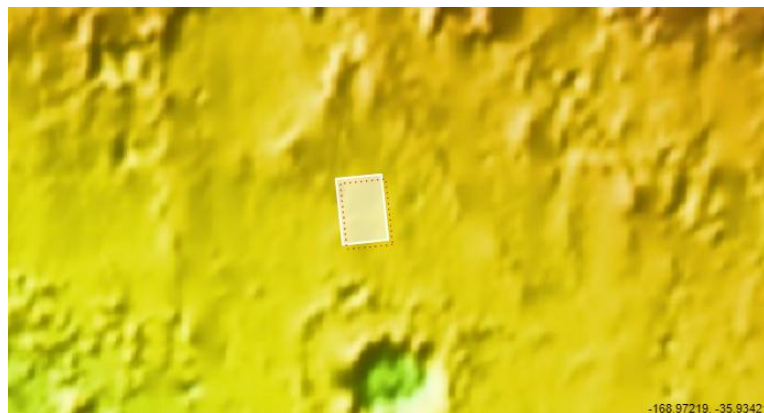
DTM Producer: LPG | Axel Noblet

Stereo Pair:

ESP_013815_1435

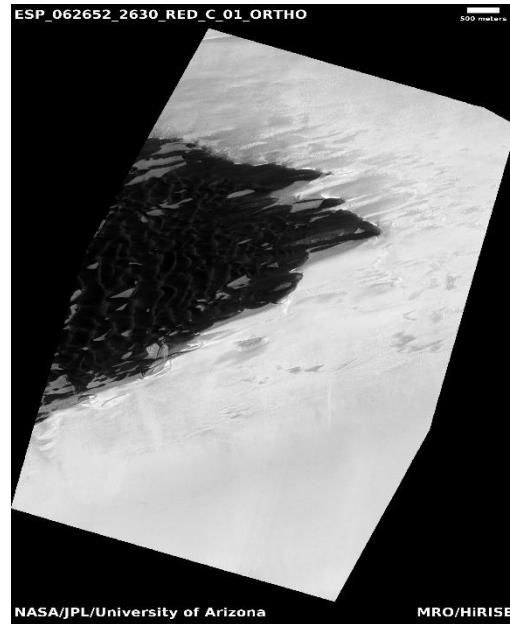
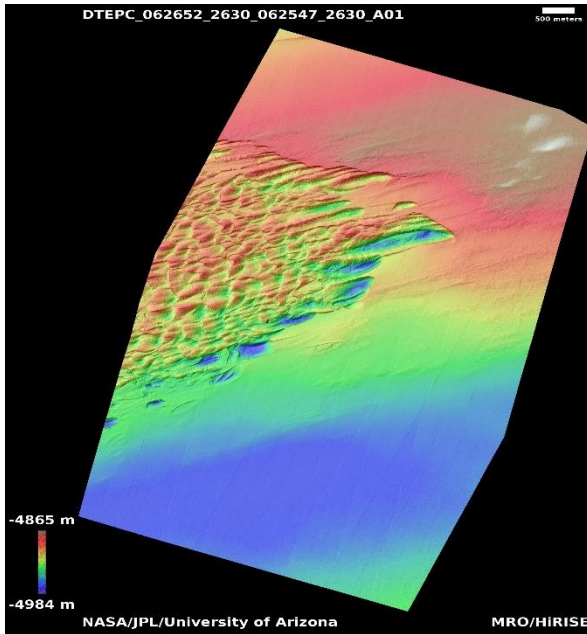
ESP_013670_1435

For more details about this DTM, visit:
https://www.uahirise.org/dtm/dtm.php?ID=ESP_013815_1435



Chasma Boreale megadunes

DTEPC_062652_2630_062547_2630_A01



82.7°N 315.9°E

DTM Producer: UA | Kris Akers

Stereo Pair:

ESP_062652_2630

ESP_062547_2630

Extra Orthos:

ESP_060239_2630

ESP_061083_2630

ESP_063272_2630

ESP_063496_2630

ESP_061571_2630

ESP_054120_2630

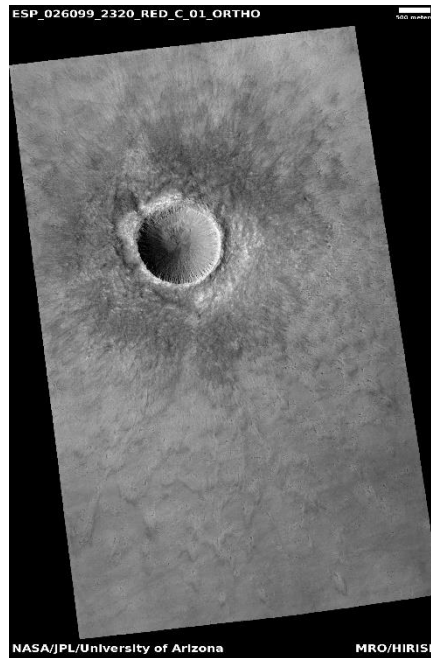
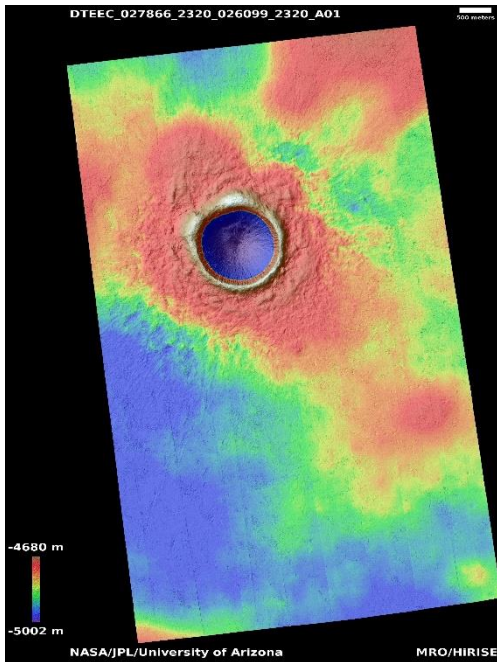
ESP_062428_2630

For more details about this DTM, visit:
https://www.uahirise.org/dtm/dtm.php?ID=ESP_062652_2630



Youthful crater and ejecta as seen in THEMIS image I19322009

DTEEC_027866_2320_026099_2320_A01



51.6°N 333.0°E

DTM Producer: UA | Kris Akers

Stereo Pair:

ESP_027866_2320

ESP_026099_2320

Extra Orthos:

ESP_035092_2320

ESP_043202_2320

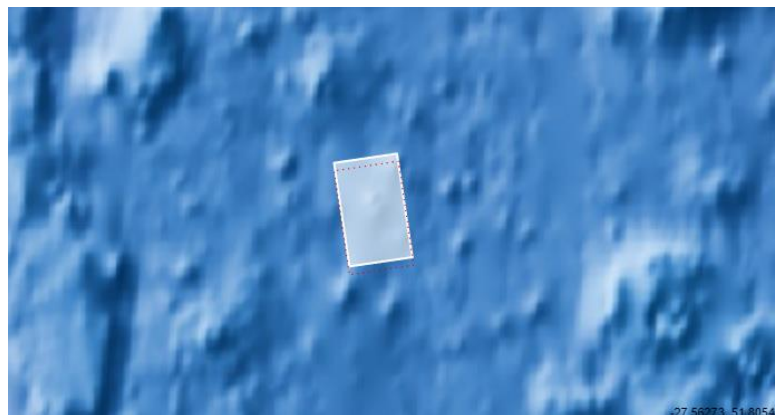
ESP_053619_2320

ESP_060793_2320

ESP_069195_2320

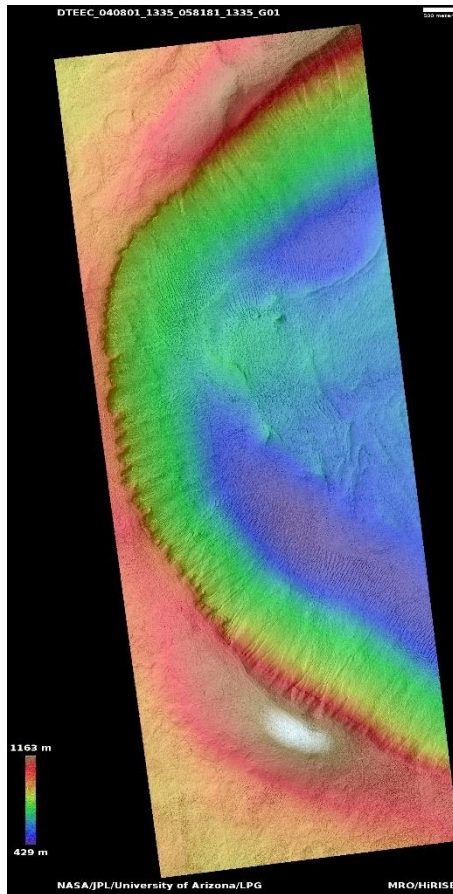
For more details about this DTM, visit:

https://www.uahirise.org/dtm/dtm.php?ID=ESP_027866_2320



Left rim of gullied crater in Kaiser Crater

DTEEC_040801_1335_058181_1335_G01



46.2°S 18.7°E

DTM Producer: LPG | Axel Noblet

Stereo Pair:

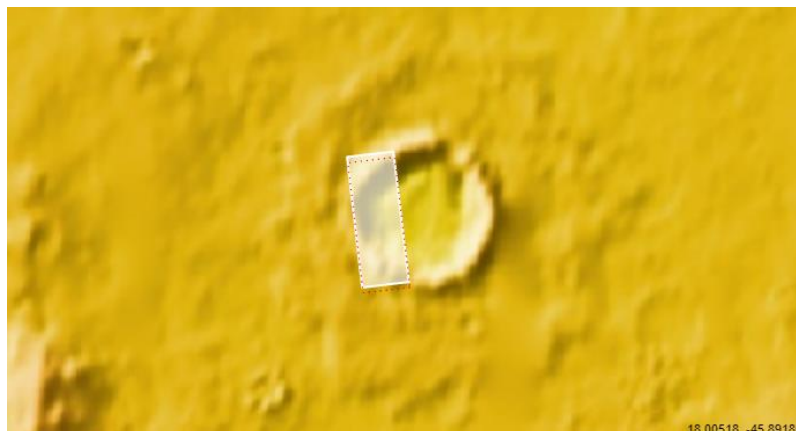
ESP_040801_1335

ESP_058181_1335

For more details about this DTM, visit:

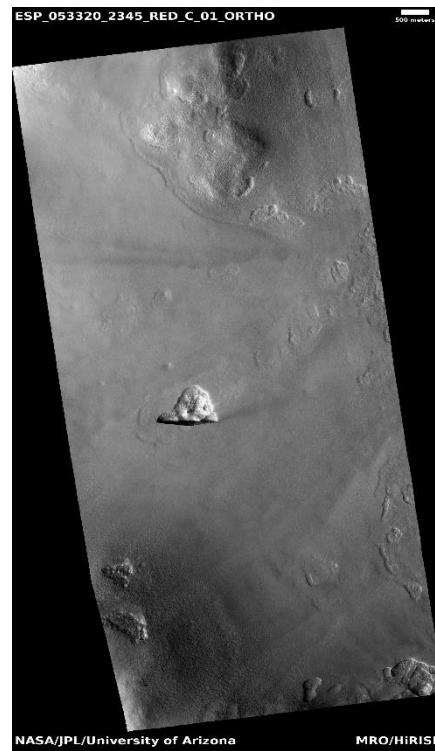
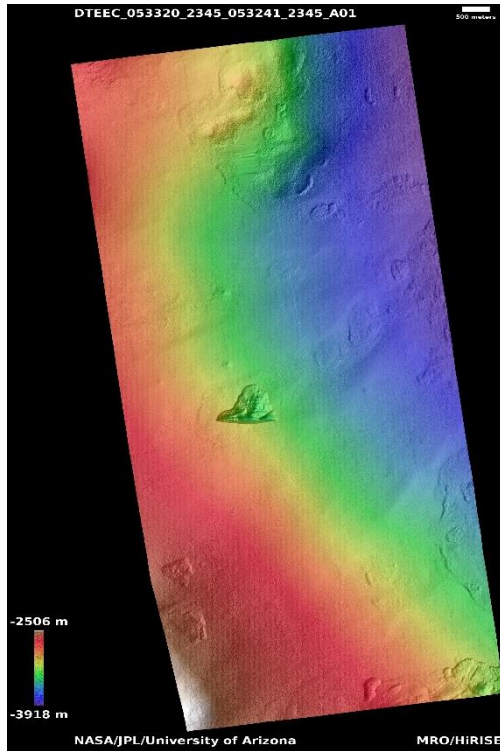
[https://www.uahirise.org/dtm/dtm.php?](https://www.uahirise.org/dtm/dtm.php?ID=ESP_040801_1335)

[ID=ESP_040801_1335](https://www.uahirise.org/dtm/dtm.php?ID=ESP_040801_1335)



Pits in mid-latitude mantle

DTEEC_053320_2345_053241_2345_A01



54.2°N 211.9°E

DTM Producer: UA | Kris Akers

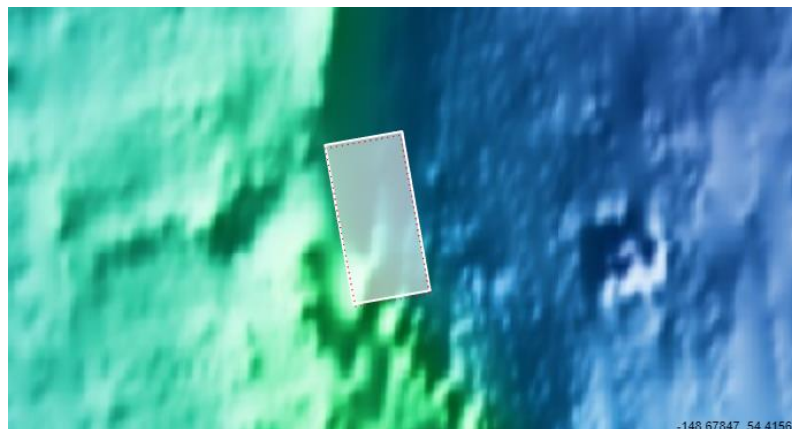
Stereo Pair:

ESP_053320_2345

ESP_053241_2345

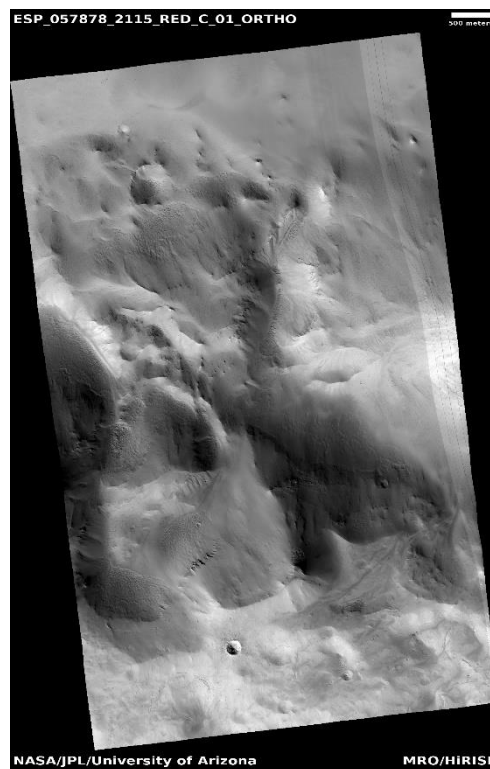
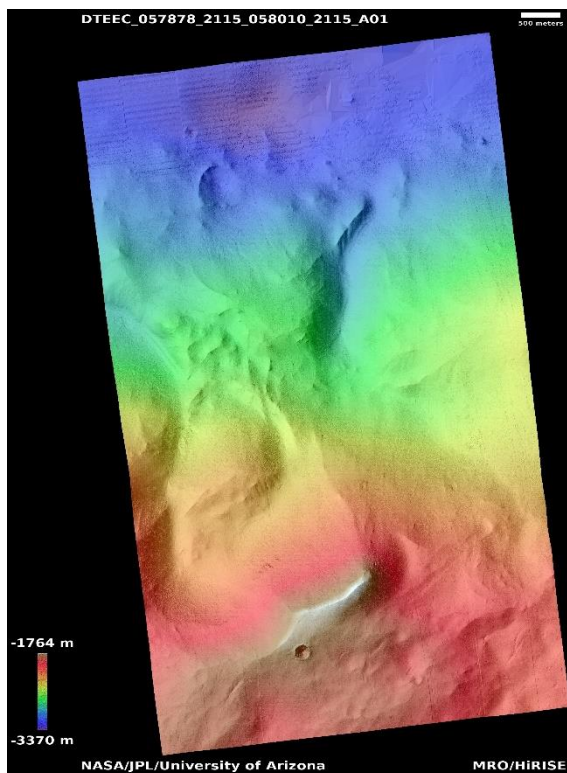
For more details about this DTM, visit:
[https://www.uahirise.org/dtm/dtm.php?](https://www.uahirise.org/dtm/dtm.php?ID=ESP_053320_2345)

[ID=ESP_053320_2345](https://www.uahirise.org/dtm/dtm.php?ID=ESP_053320_2345)



Slope features in Arabia Terra

DTEEC_057878_2115_058010_2115_A01



31.2°N 356.6°E

DTM Producer: UA | Kris Akers

Stereo Pair:

ESP_057878_2115

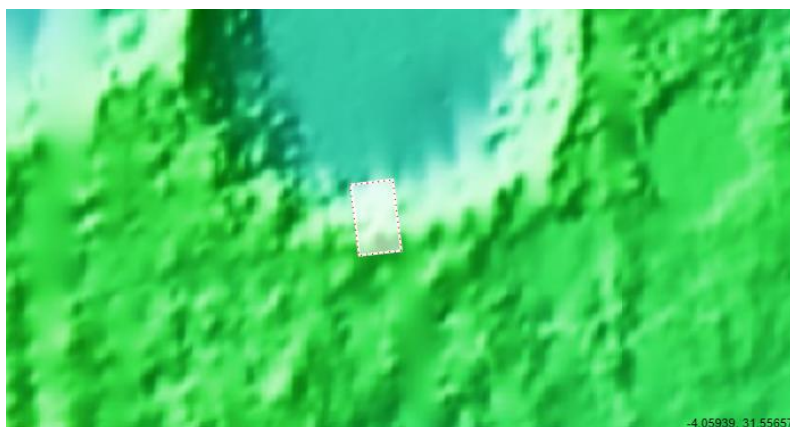
ESP_058010_2115

Extra Ortho:

ESP_048779_2115

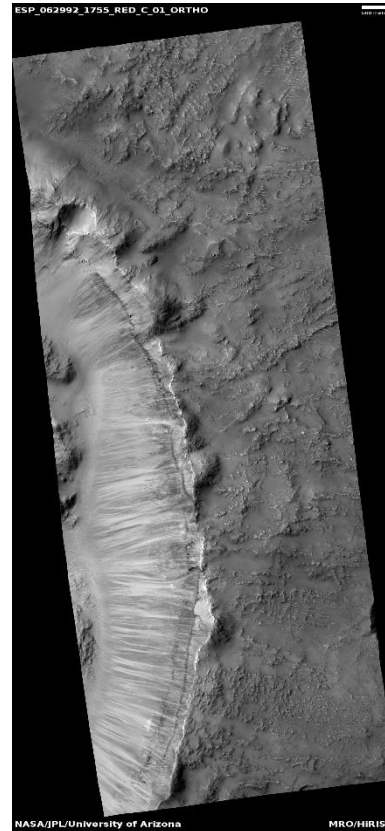
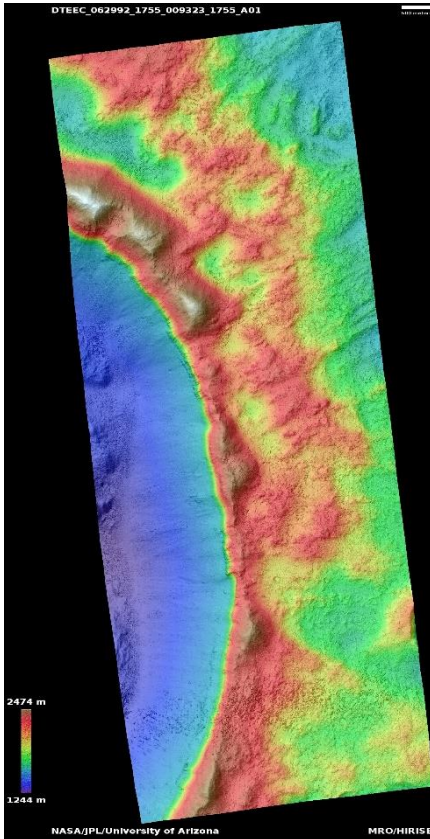
For more details about this DTM, visit:

https://www.uahirise.org/dtm/dtm.php?ID=ESP_057878_2115



Olivine-rich bedrock exposed in crater wall in Tyrrhena Terra

DTEEC_062992_1755_009323_1755_A01



4.6°S 66.3°E

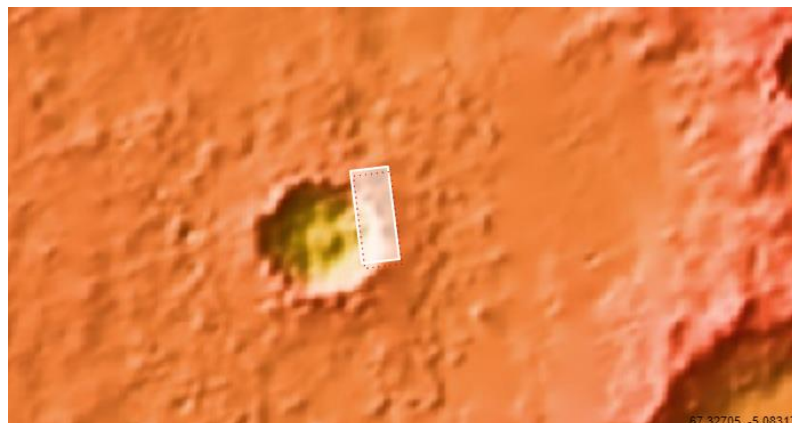
DTM Producer: UA | Kris Akers

Stereo Pair:

ESP_062992_1755

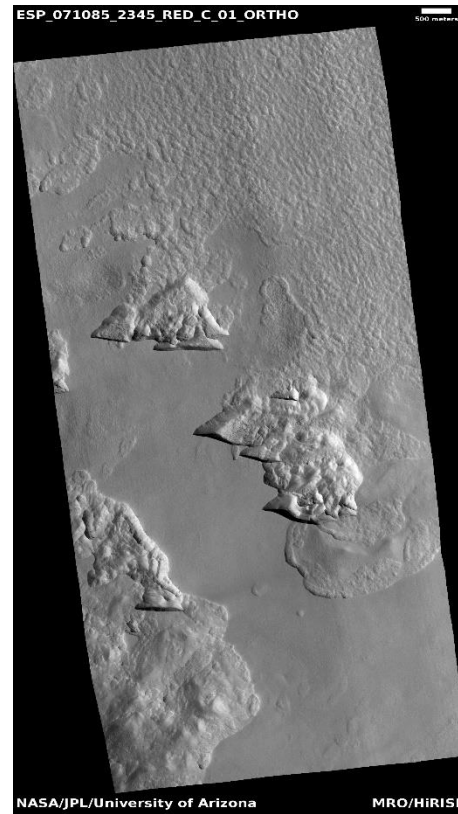
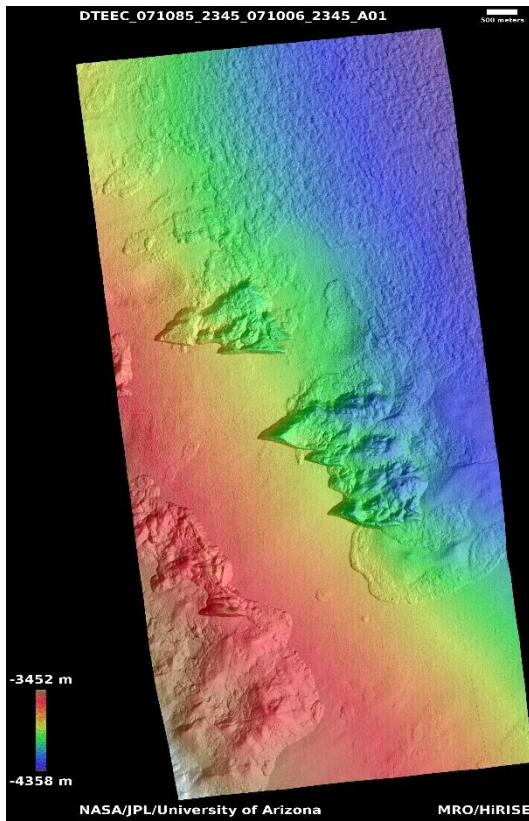
PSP_009323_1755

For more details about this DTM, visit:
[https://www.uahirise.org/dtm/dtm.php?
ID=ESP_062992_1755](https://www.uahirise.org/dtm/dtm.php?ID=ESP_062992_1755)



Scarps in Milankovic Crater

DTEEC_071085_2345_071006_2345_A01



54.2°N 212.1°E

DTM Producer: UA | Kris Akers

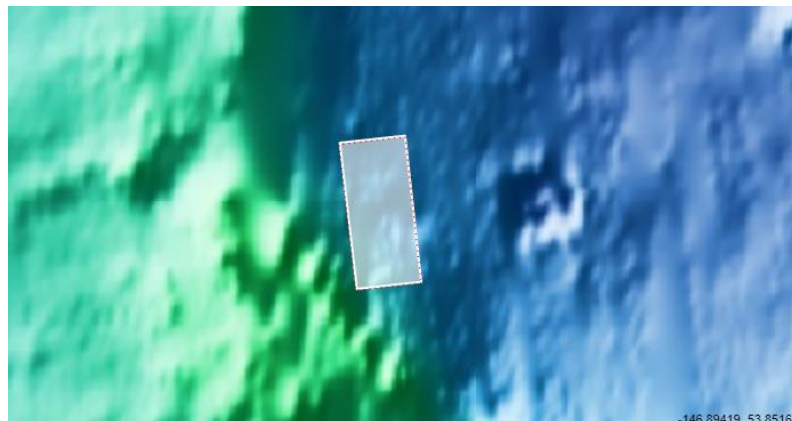
Stereo Pair:

ESP_071085_2345

ESP_071006_2345

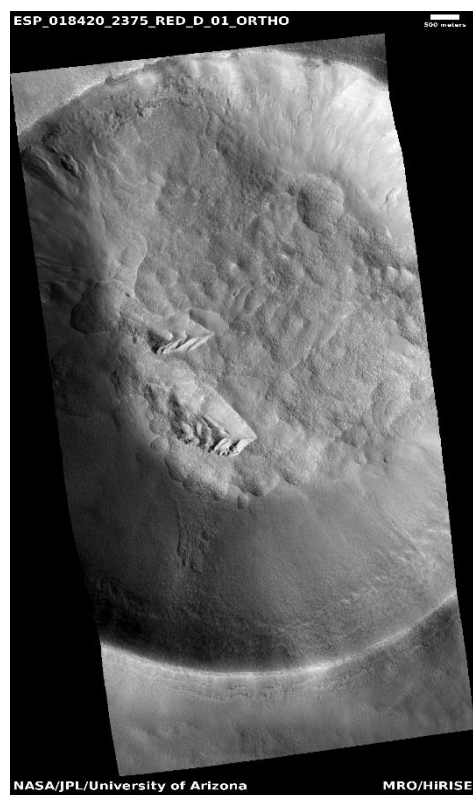
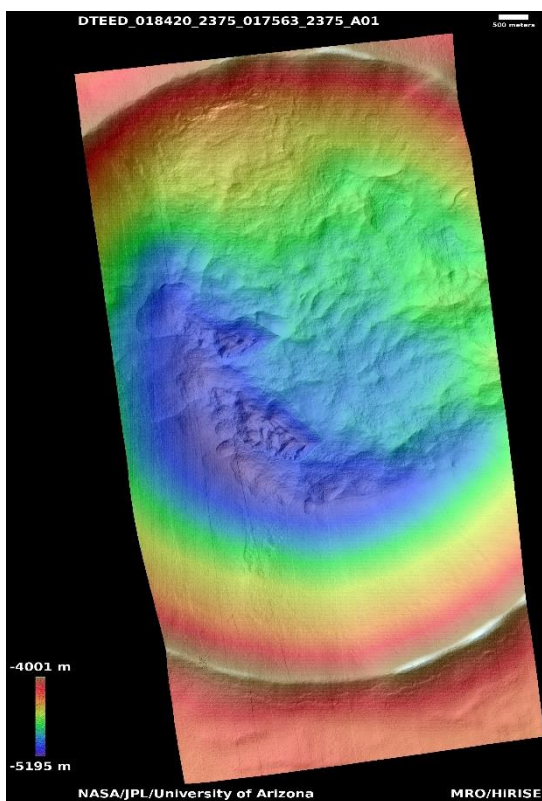
For more details about this DTM, visit:
[https://www.uahirise.org/dtm/dtm.php?](https://www.uahirise.org/dtm/dtm.php?ID=ESP_071085_2345)

[ID=ESP_071085_2345](https://www.uahirise.org/dtm/dtm.php?ID=ESP_071085_2345)



Multi-pedestal crater on northern plains

DTEED_018420_2375_017563_2375_A01



56.9°N 95.7°E

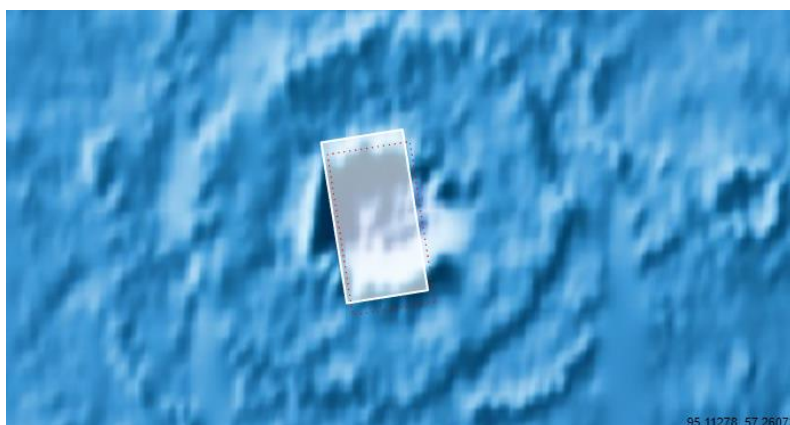
DTM Producer: UA | Kris Akers

Stereo Pair:

ESP_018420_2375

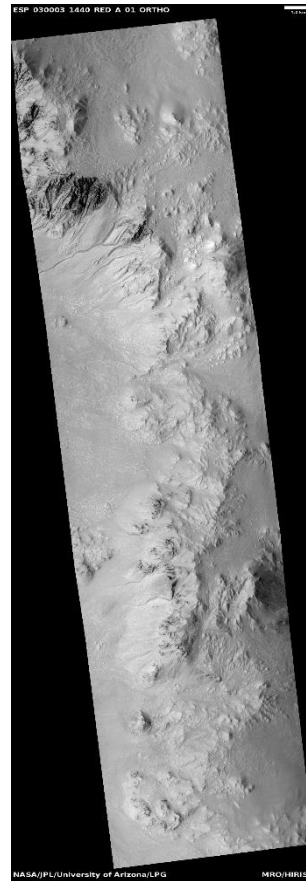
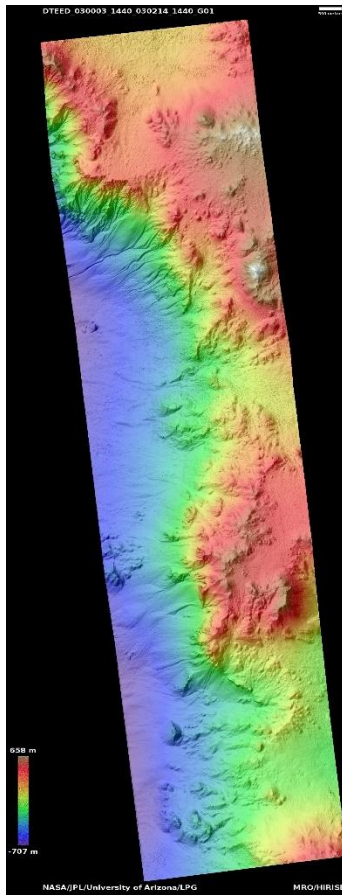
ESP_017563_2375

For more details about this DTM, visit:
https://www.uahirise.org/dtm/dtm.php?ID=ESP_018420_2375



Light-toned gully deposits in Hale Crater

DTEED_030003_1440_030214_1440_G01



35.5°S 324.9°E

DTM Producer: LPG | Axel Noblet

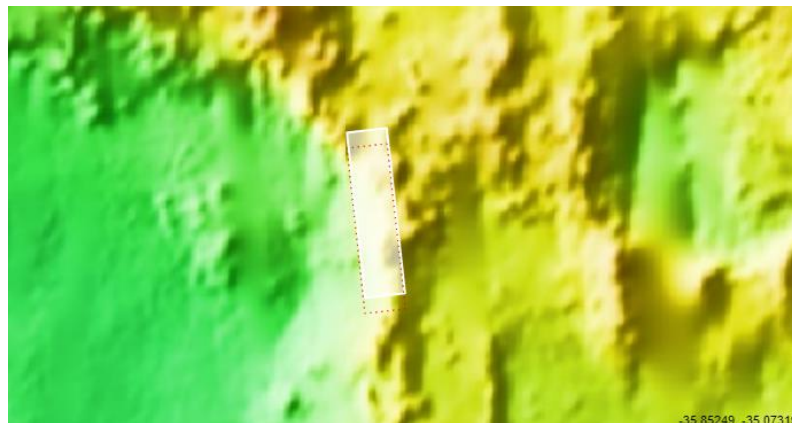
Stereo Pair:

ESP_030003_1440

ESP_030214_1440

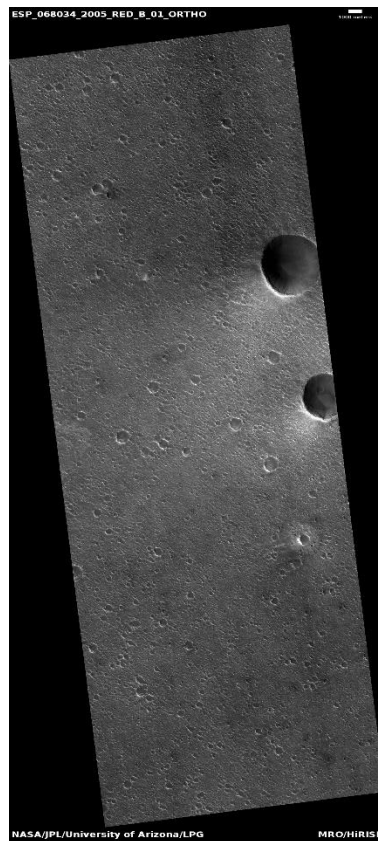
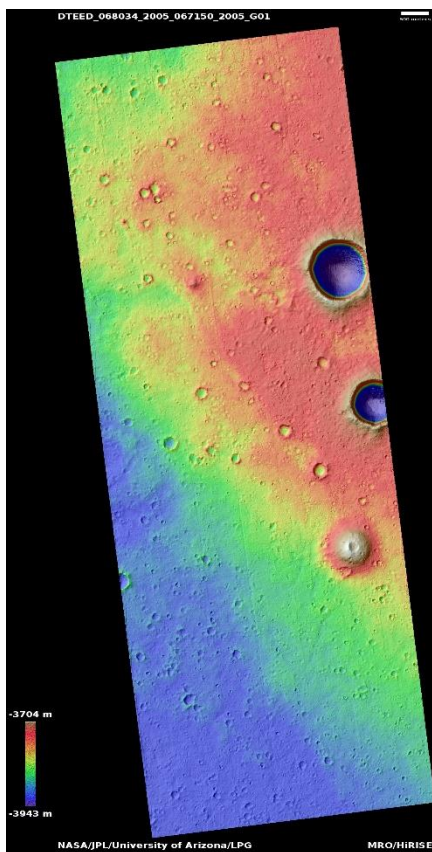
For more details about this DTM, visit:
[https://www.uahirise.org/dtm/dtm.php?](https://www.uahirise.org/dtm/dtm.php?ID=ESP_030003_1440)

[ID=ESP_030003_1440](https://www.uahirise.org/dtm/dtm.php?ID=ESP_030003_1440)



Flow-like feature within Chryse Planitia

DTEED_068034_2005_067150_2005_G01



20.2°N 324.2°E

DTM Producer: LPG | Axel Noblet

Stereo Pair:

ESP_068034_2005

ESP_067150_2005

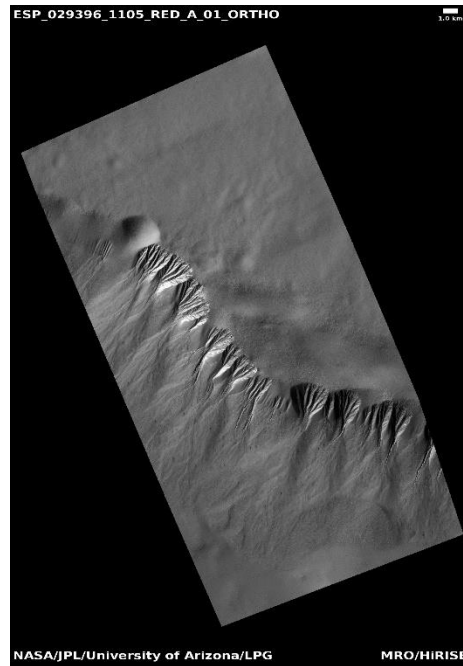
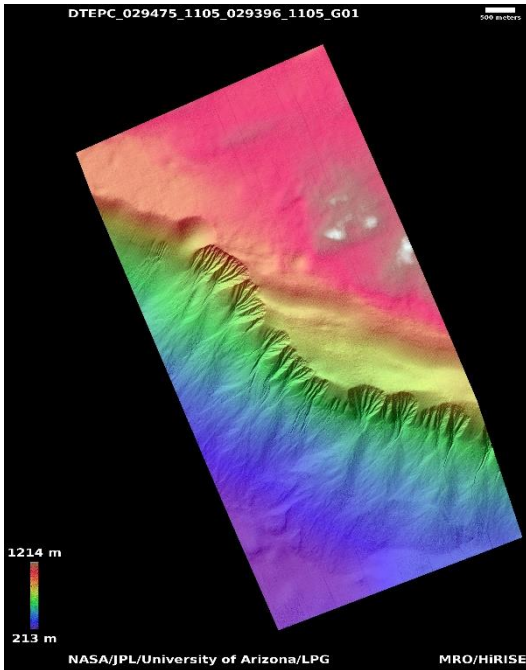
For more details about this DTM, visit:
[https://www.uahirise.org/dtm/dtm.php?](https://www.uahirise.org/dtm/dtm.php?ID=ESP_068034_2005)

[ID=ESP_068034_2005](https://www.uahirise.org/dtm/dtm.php?ID=ESP_068034_2005)



Gully monitoring

DTEPC_029475_1105_029396_1105_G01



69.5°S 346.2°E

DTM Producer: LPG | Axel Noblet

Stereo Pair:

ESP_029475_1105

ESP_029396_1105

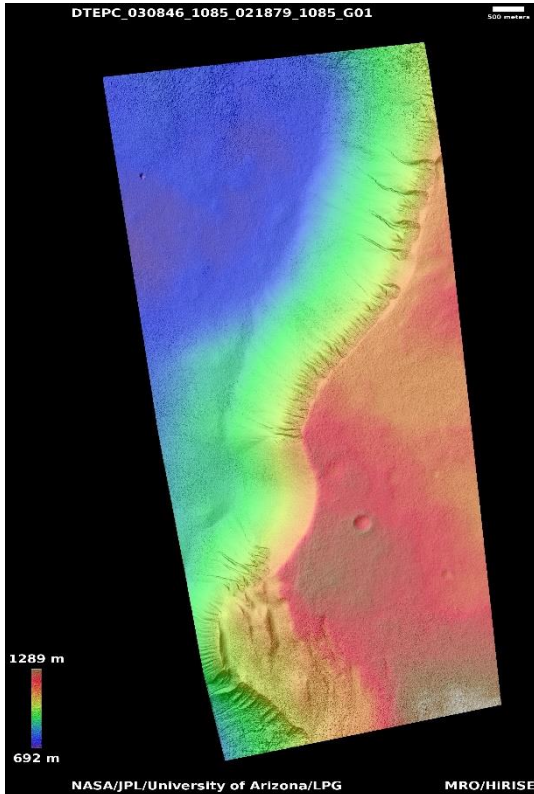
For more details about this DTM, visit:
[https://www.uahirise.org/dtm/dtm.php?](https://www.uahirise.org/dtm/dtm.php?ID=ESP_029475_1105)

[ID=ESP_029475_1105](https://www.uahirise.org/dtm/dtm.php?ID=ESP_029475_1105)



Polar pit gullies

DTFPC_030846_1085_021879_1085_G01



71.3°S 3.1°E

DTM Producer: LPG | Axel Noblet

Stereo Pair:

ESP_030846_1085

ESP_021879_1085

For more details about this DTM, visit:
https://www.uahirise.org/dtm/dtm.php?ID=ESP_030846_1085

