



HIGH RESOLUTION IMAGING SCIENCE EXPERIMENT



COLLEGE OF SCIENCE
**LUNAR & PLANETARY
LABORATORY**

DTM PDS RELEASES

August 2025

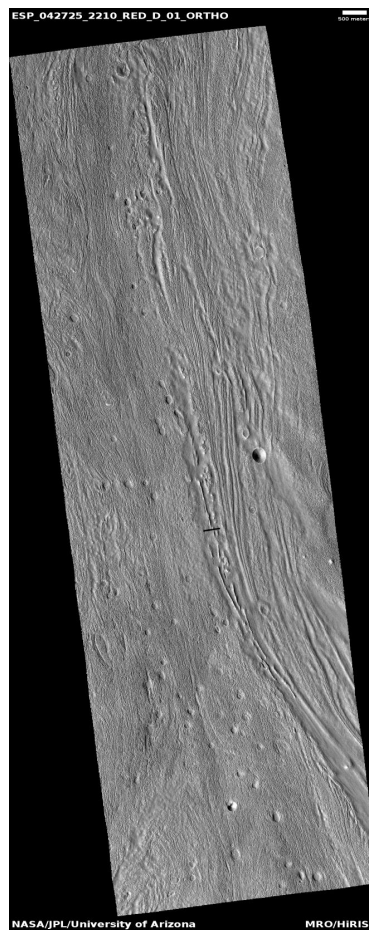
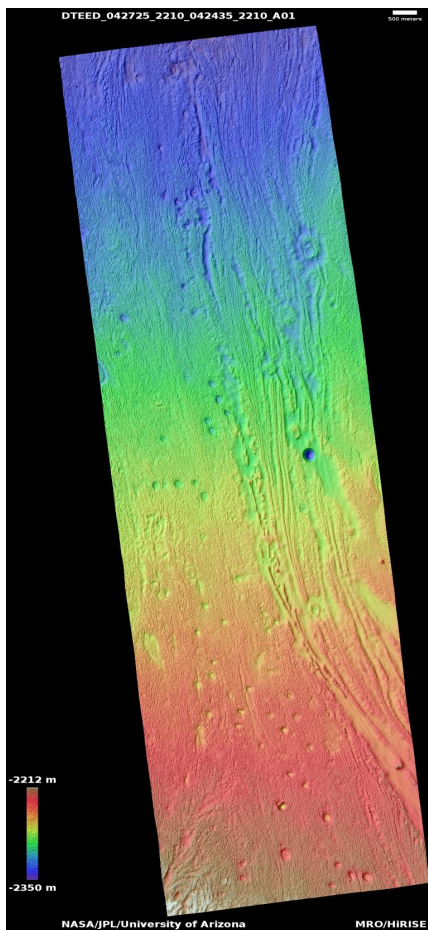
Edited by Kris Akers | UA

DTMs Included this Month

Lineated valley floor material in terrain north of Arabia region	1
Crater rim deposits near planned ExoMars landing site in Oxia Planum	2
Crater wall with potential chloride deposit outcrop	3

Lineated valley floor material in terrain north of Arabia region

DTEED_042725_2210_042435_2210_A01



Latitude: 41.0 **Longitude:** 34.6

DTM Producer: UA | KRIS AMANDA AKERS

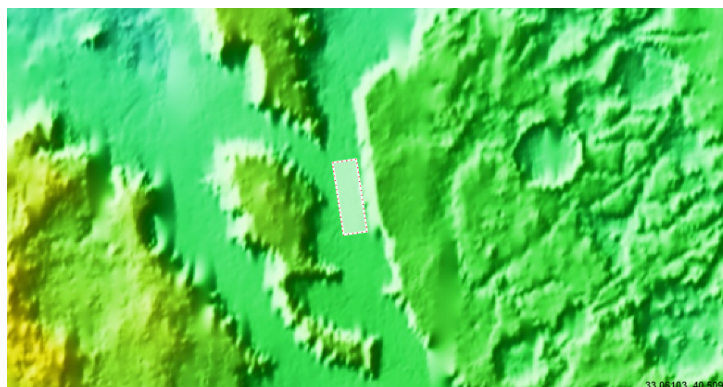
Stereo Pair:

ESP_042435_2210

ESP_042725_2210

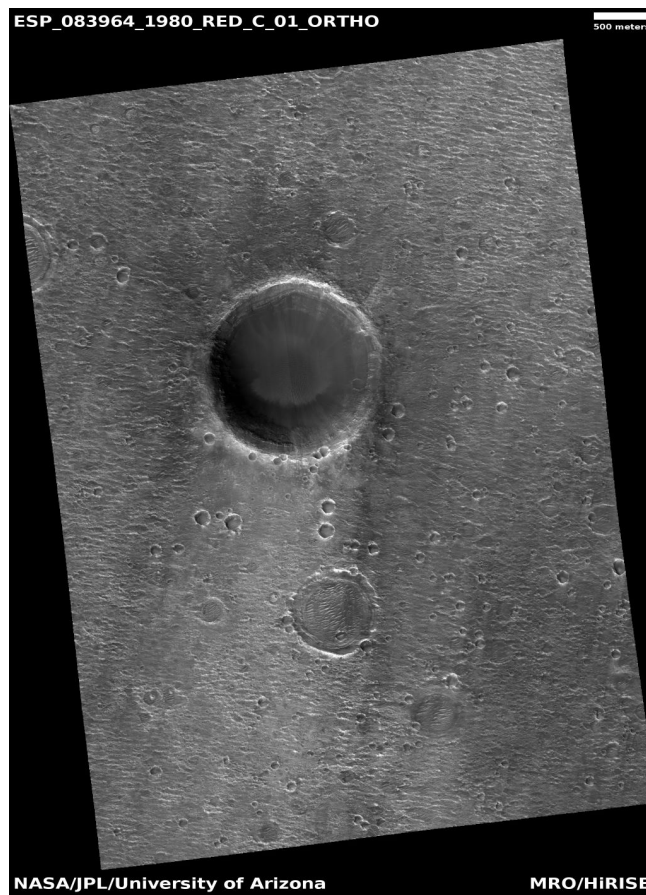
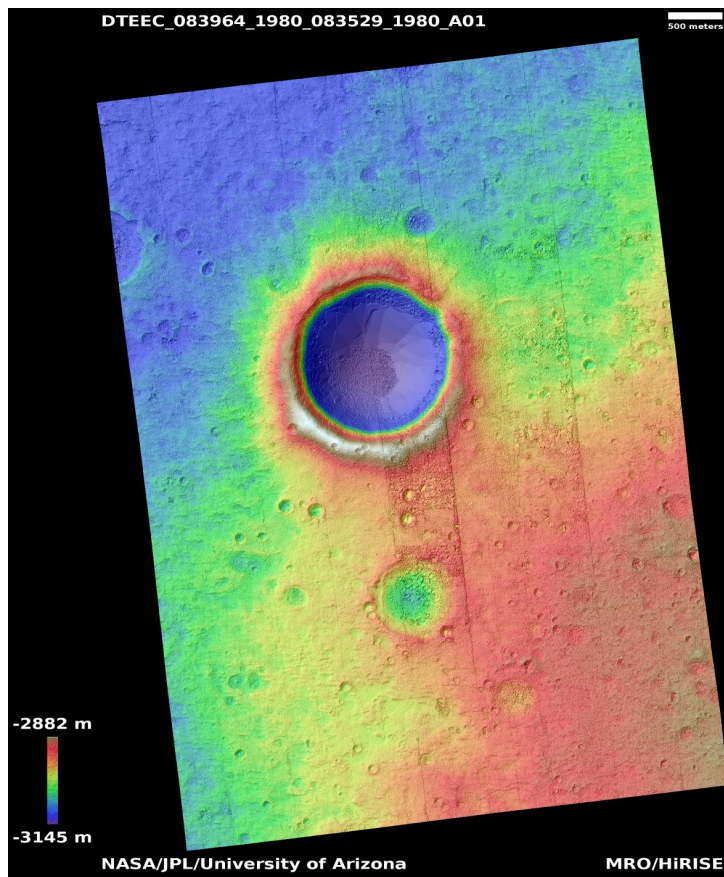
For more details about this DTM, visit:

https://www.uahirise.org/dtm/ESP_042725_2210



Crater rim deposits near planned ExoMars landing site in Oxia Planum

DTEEC_083964_1980_083529_1980_A01



Latitude: 17.6 **Longitude:** 334.8

DTM Producer: UA | KRIS AMANDA AKERS

Stereo Pair:

ESP_083529_1980

ESP_083964_1980

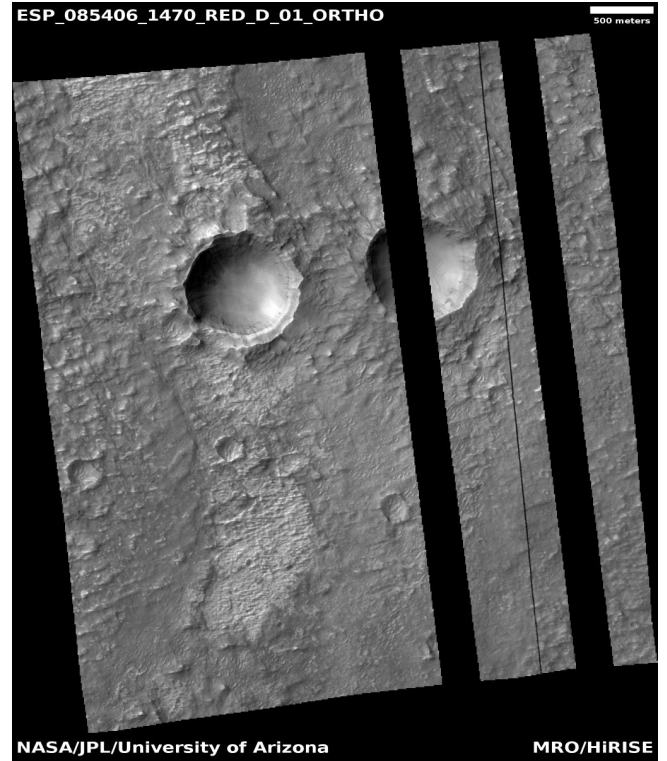
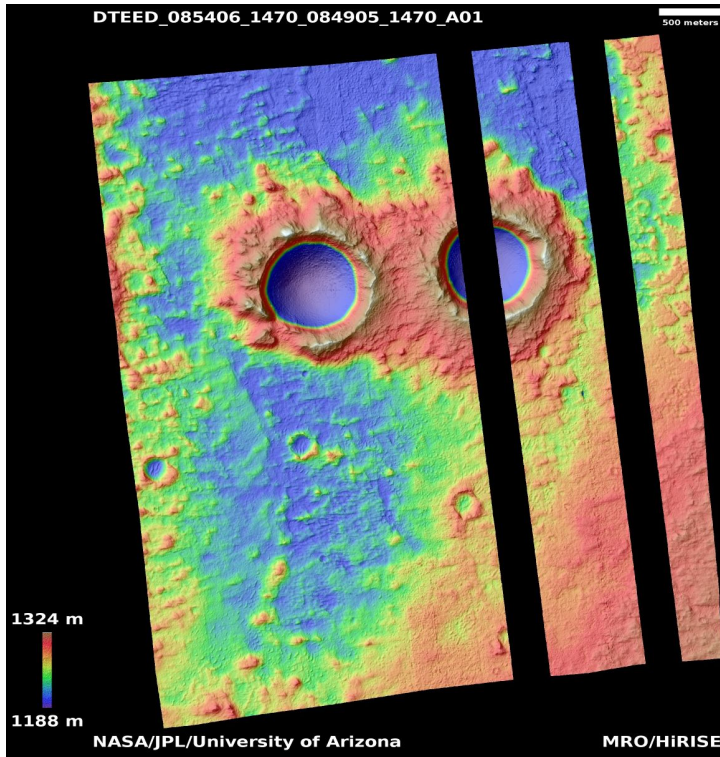
For more details about this DTM, visit:

https://www.uahirise.org/dtm/ESP_083964_1980



Crater wall with potential chloride deposit outcrop

DTEED_085406_1470_084905_1470_A01



Latitude: -32.8 **Longitude:** 205.3

DTM Producer: UA | KRIS AMANDA AKERS

Stereo Pair:

ESP_085406_1470

ESP_084905_1470

For more details about this DTM, visit:

https://www.uahirise.org/dtm/ESP_085406_1470

