



HIGH RESOLUTION IMAGING SCIENCE EXPERIMENT



DTM PDS RELEASES

August 2022

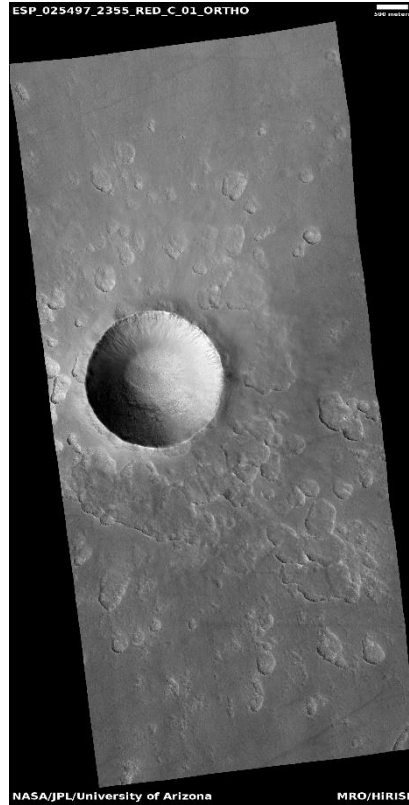
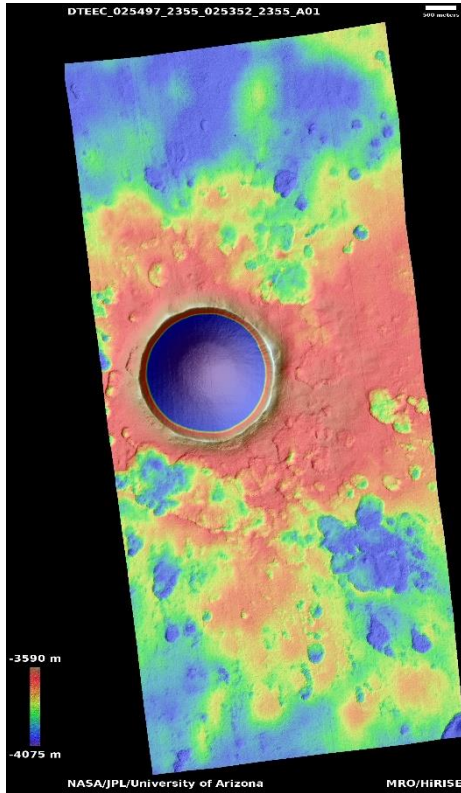
Edited by Kris Akers | UA

DTMs Included this Month

Fresh crater.....	1
Aram Chaos.....	2
Intracrater sand dunes and patch changes.....	3
Tributary of Mamers Valles.....	4
Gully without apron.....	5
Evidence of ice and rock in crater near side channel of Mamers Valles.....	6
Cratered cones in western Elysium Planitia.....	7
Possible skylight near Elysium region.....	8
Gully and slope monitoring.....	9
Pitted cones in Utopia Planitia.....	10
Pitted cones in Utopia Planitia.....	11
Aram Chaos.....	12
Layered structure and depression on rim of Moreux Crater.....	13
Lava vent with channels.....	14
Gullies and viscous flow feature in Nereidum Montes.....	15
Landforms in Utopia Planitia.....	16
Mass of viscous flow features at base of gullied slope.....	17
Landforms in Utopia Planitia.....	18
Gullies in Nereidum Montes.....	19
Distal extent of inverted delta material.....	20
Dipping layers south of Reull Vallis.....	21
Fractures and uplifted portion of floor of Echus Chasma.....	22

Fresh crater

DTEEC_025497_2355_025352_2355_A01



55.0°N 206.6°E

DTM Producer: UA | Branden M Gosse

Stereo Pair:

ESP_025497_2355

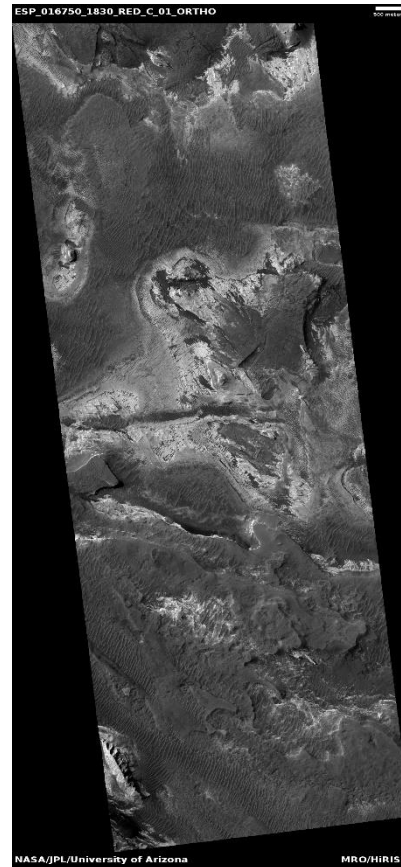
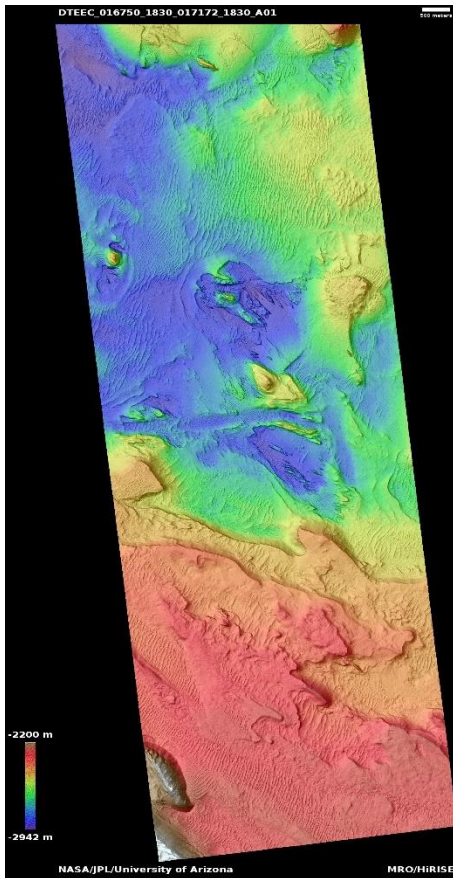
ESP_025352_2355

For more details about this DTM, visit:
https://www.uahirise.org/dtm/dtm.php?ID=ESP_025497_2355



Aram Chaos

DTEEC_016750_1830_017172_1830_A01



2.8°N 339.7°E

DTM Producer: UA | Kris Akers

Stereo Pair:

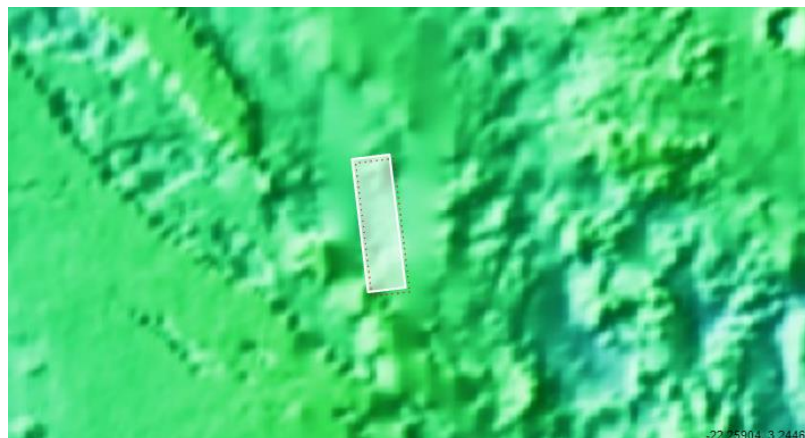
ESP_016750_1830

ESP_017172_1830

For more details about this DTM, visit:

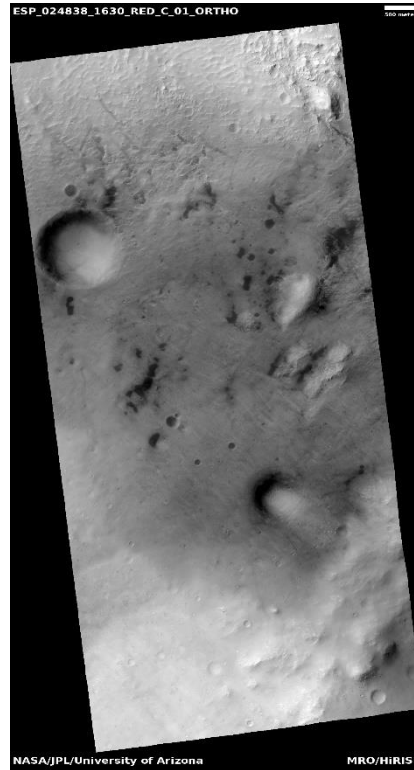
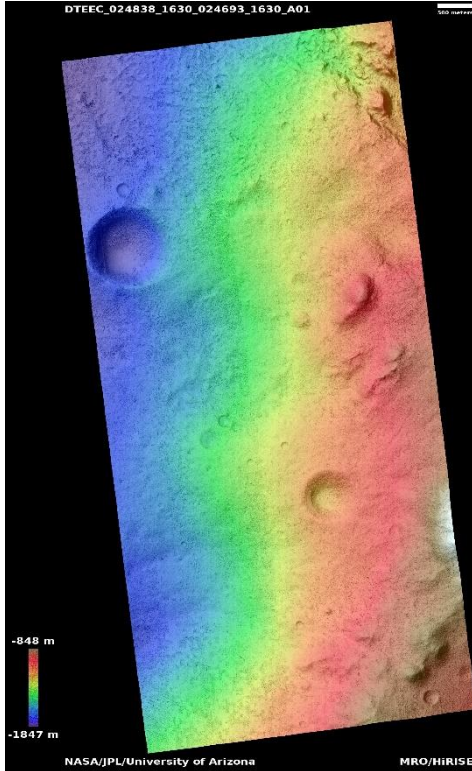
[https://www.uahirise.org/dtm/dtm.php?](https://www.uahirise.org/dtm/dtm.php?ID=ESP_016750_1830)

[ID=ESP_016750_1830](https://www.uahirise.org/dtm/dtm.php?ID=ESP_016750_1830)



Intracrater sand dunes and patch changes

DTEEC_024838_1630_024693_1630_A01



16.7°S 208.0°E

DTM Producer: UA | Kris Akers

Stereo Pair:

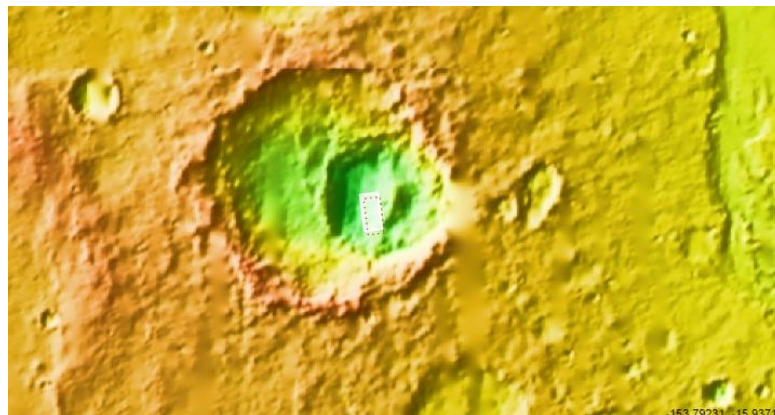
ESP_024838_1630

ESP_024693_1630

Extra Orthos:

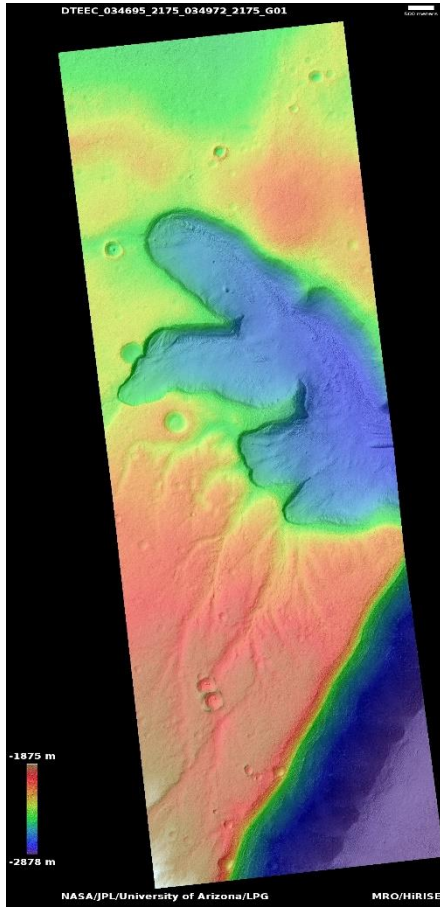
ESP_059677_1630

For more details about this DTM, visit:
https://www.uahirise.org/dtm/dtm.php?ID=ESP_024838_1630



Tributary of Mamers Valles

DTEEC_034695_2175_034972_2175_G01



37.1°N 15.0°E

DTM Producer: LPG | Axel Noblet

Stereo Pair:

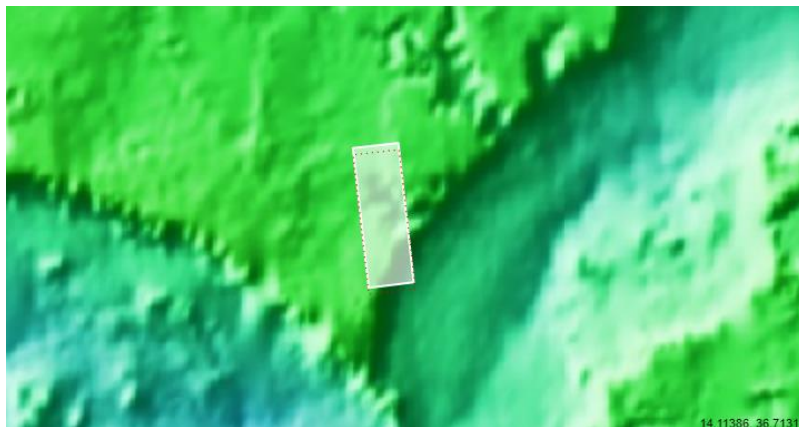
ESP_034695_2175

ESP_034972_2175

For more details about this DTM, visit:

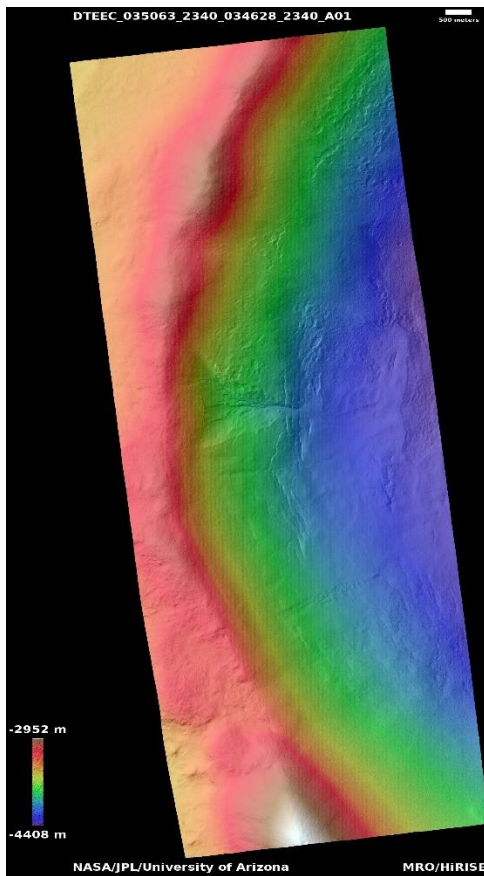
[https://www.uahirise.org/dtm/dtm.php?](https://www.uahirise.org/dtm/dtm.php?ID=ESP_034695_2175)

[ID=ESP_034695_2175](https://www.uahirise.org/dtm/dtm.php?ID=ESP_034695_2175)



Gully without apron

DTEEC_035063_2340_034628_2340_A01



53.7°N 41.1°E

DTM Producer: UA | Kris Akers

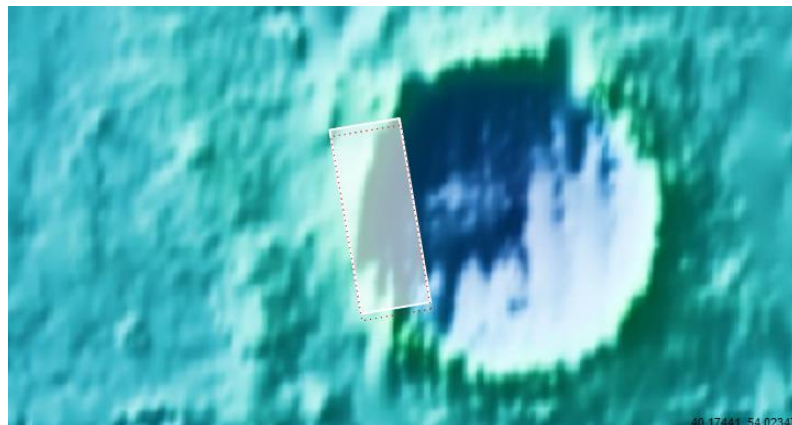
Stereo Pair:

ESP_035063_2340

ESP_034628_2340

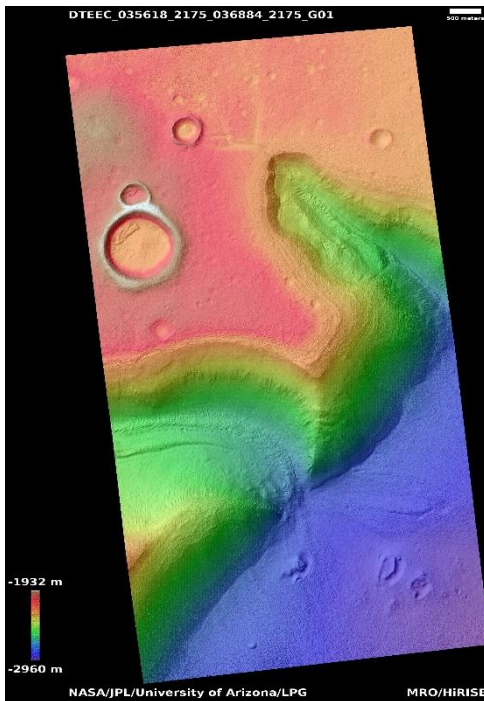
For more details about this DTM, visit:
[https://www.uahirise.org/dtm/dtm.php?](https://www.uahirise.org/dtm/dtm.php?ID=ESP_035063_2340)

[ID=ESP_035063_2340](https://www.uahirise.org/dtm/dtm.php?ID=ESP_035063_2340)



Evidence of ice and rock in crater near side channel of Mamers Valles

DTEEC_035618_2175_036884_2175_G01



37.1°N 15.1°E

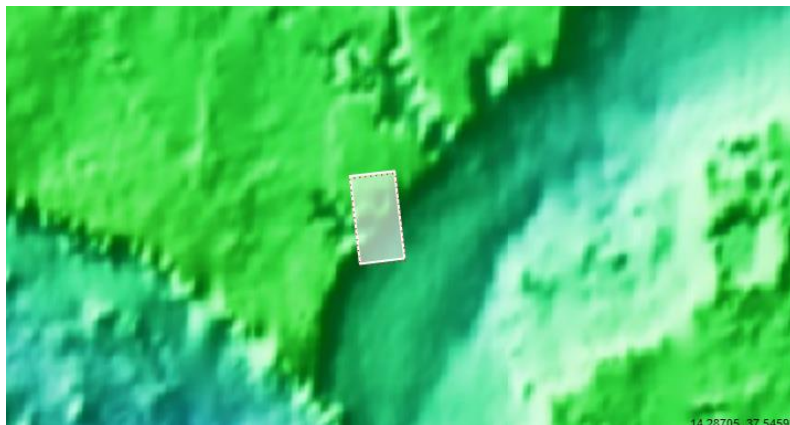
DTM Producer: LPG | Axel Noblet

Stereo Pair:

ESP_035618_2175

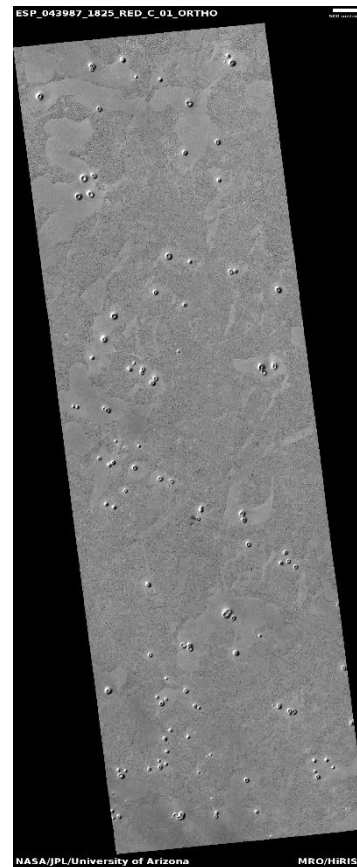
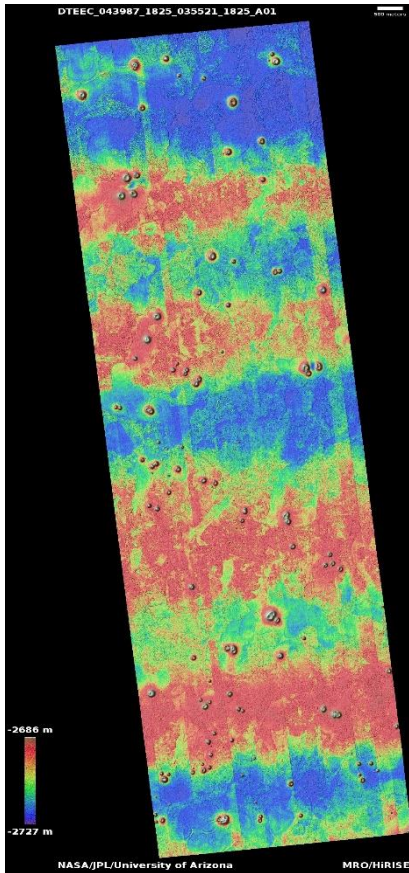
ESP_036884_2175

For more details about this DTM, visit:
https://www.uahirise.org/dtm/dtm.php?ID=ESP_035618_2175



Cratered cones in western Elysium Planitia

DTEEC_043987_1825_035521_1825_A01



2.4°N 146.8°E

DTM Producer: UA | Kris Akers

Stereo Pair:

ESP_043987_1825

ESP_035521_1825

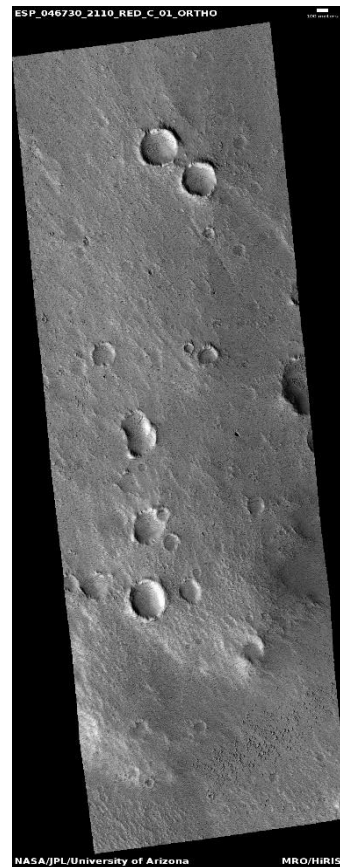
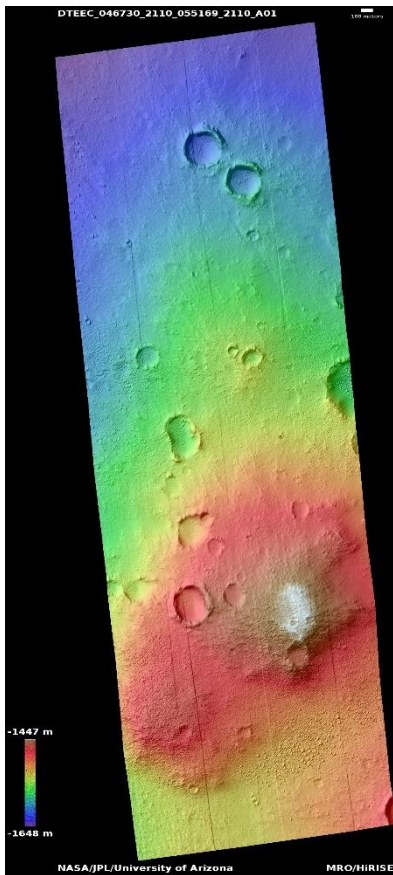
For more details about this DTM, visit:
[https://www.uahirise.org/dtm/dtm.php?](https://www.uahirise.org/dtm/dtm.php?ID=ESP_043987_1825)

[ID=ESP_043987_1825](https://www.uahirise.org/dtm/dtm.php?ID=ESP_043987_1825)



Possible skylight near Elysium region

DTEEC_046730_2110_055169_2110_A01



30.6°N 141.3°E

DTM Producer: UA | Branden M Gosse

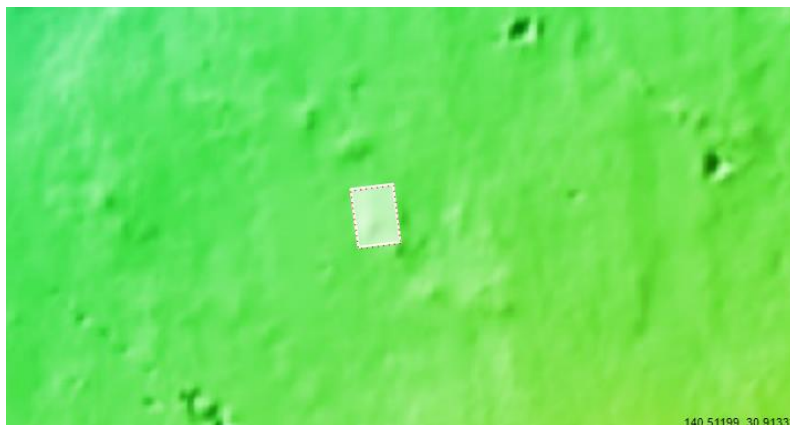
Stereo Pair:

ESP_046730_2110

ESP_055169_2110

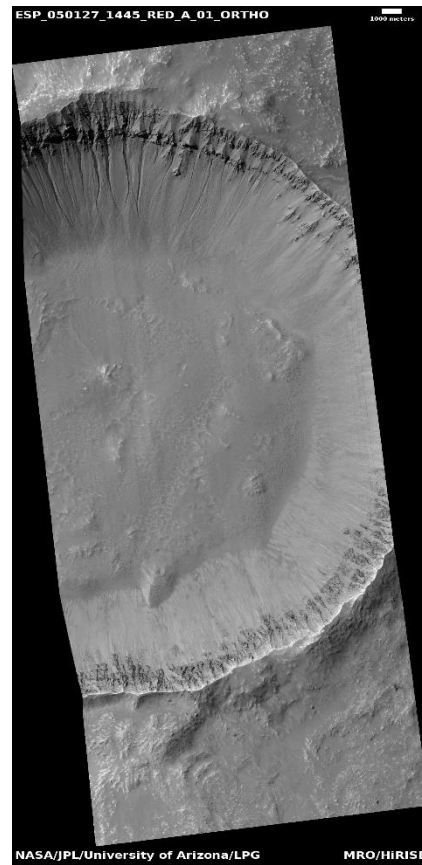
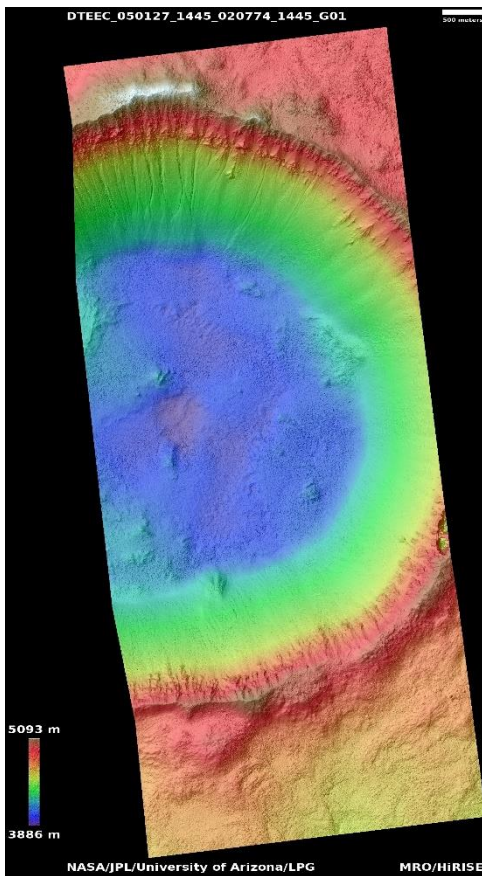
For more details about this DTM, visit:
[https://www.uahirise.org/dtm/dtm.php?](https://www.uahirise.org/dtm/dtm.php?ID=ESP_046730_2110)

[ID=ESP_046730_2110](https://www.uahirise.org/dtm/dtm.php?ID=ESP_046730_2110)



Gully and slope monitoring

DTEEC_050127_1445_020774_1445_G01



35.1°S 283.8°E

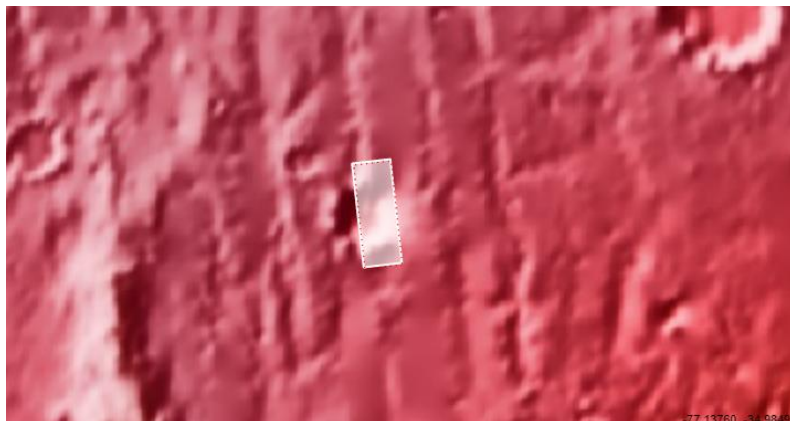
DTM Producer: LPG | Axel Noblet

Stereo Pair:

ESP_050127_1445

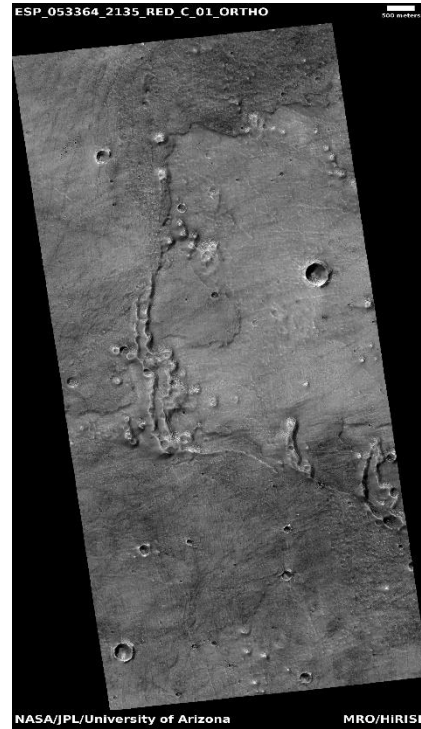
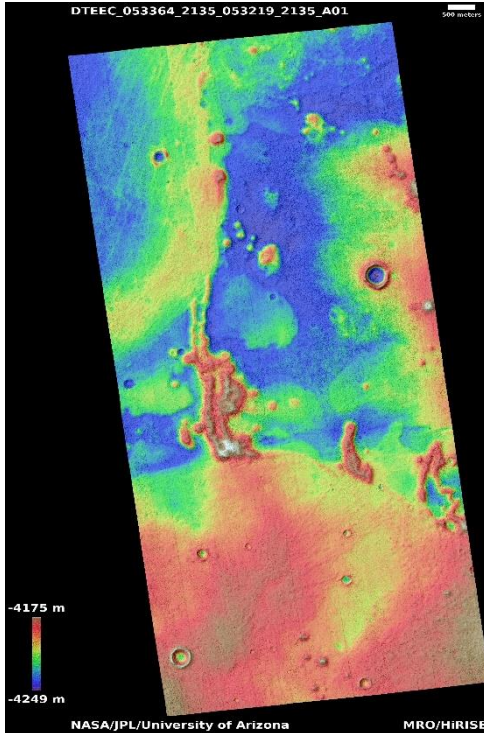
ESP_020774_1445

For more details about this DTM, visit:
https://www.uahirise.org/dtm/dtm.php?ID=ESP_050127_1445



Pitted cones in Utopia Planitia

DTEEC_053364_2135_053219_2135_A01



33.1°N 95.0°E

DTM Producer: UA | Kris Akers

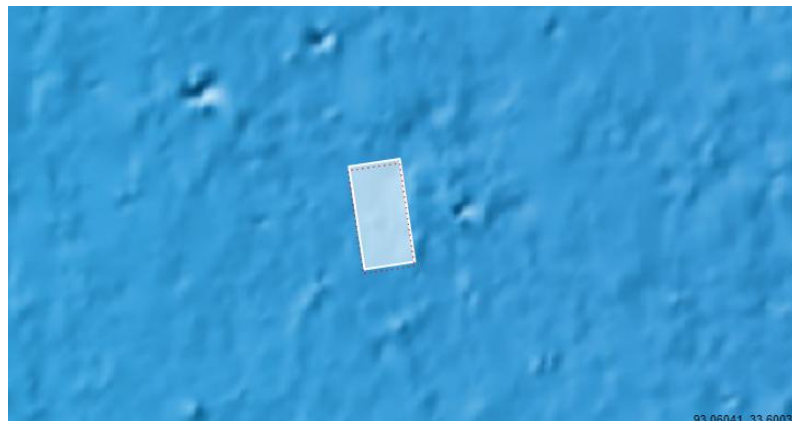
Stereo Pair:

ESP_053364_2135

ESP_053219_2135

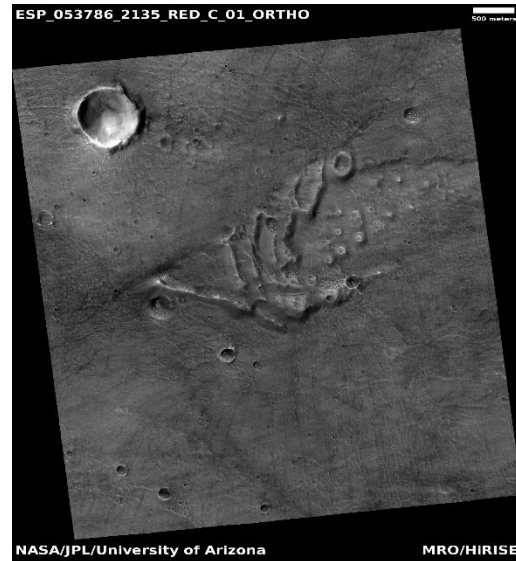
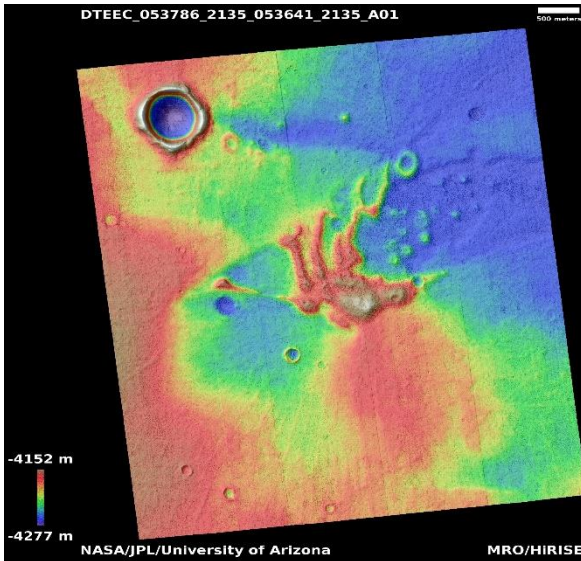
For more details about this DTM, visit:
[https://www.uahirise.org/dtm/dtm.php?](https://www.uahirise.org/dtm/dtm.php?ID=ESP_053364_2135)

[ID=ESP_053364_2135](https://www.uahirise.org/dtm/dtm.php?ID=ESP_053364_2135)



Pitted cones in Utopia Planitia

DTEEC_053786_2135_053641_2135_A01



33.1°N 94.9°E

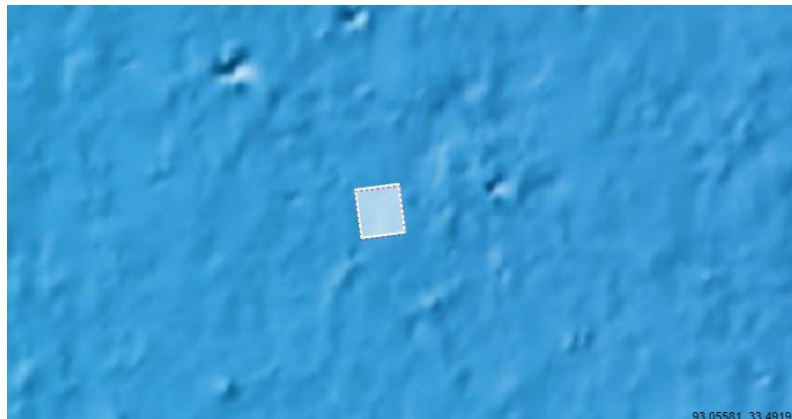
DTM Producer: UA | Kris Akers

Stereo Pair:

ESP_053786_2135

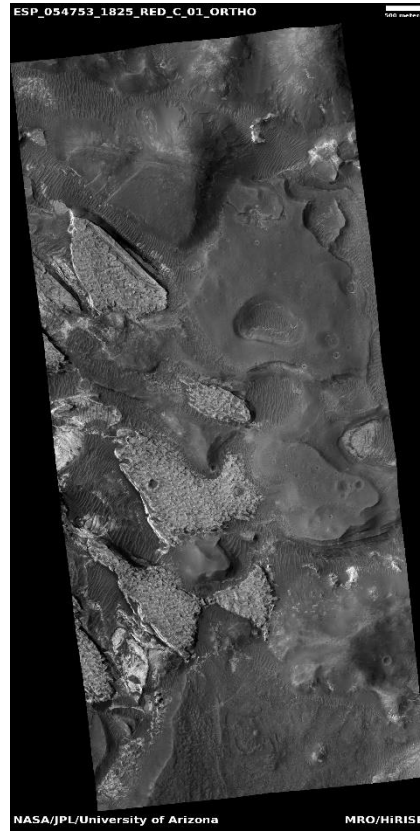
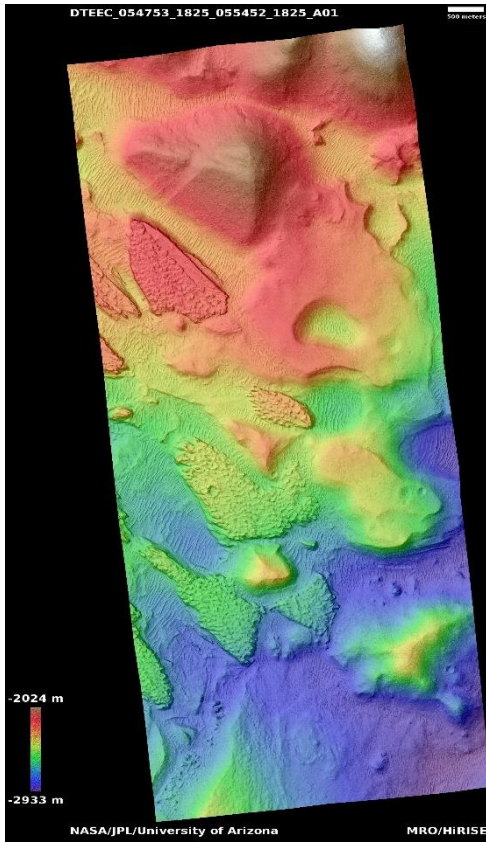
ESP_053641_2135

For more details about this DTM, visit:
https://www.uahirise.org/dtm/dtm.php?ID=ESP_053786_2135



Aram Chaos

DTEEC_054753_1825_055452_1825_A01



2.3°N 340.1°E

DTM Producer: UA | Kris Akers

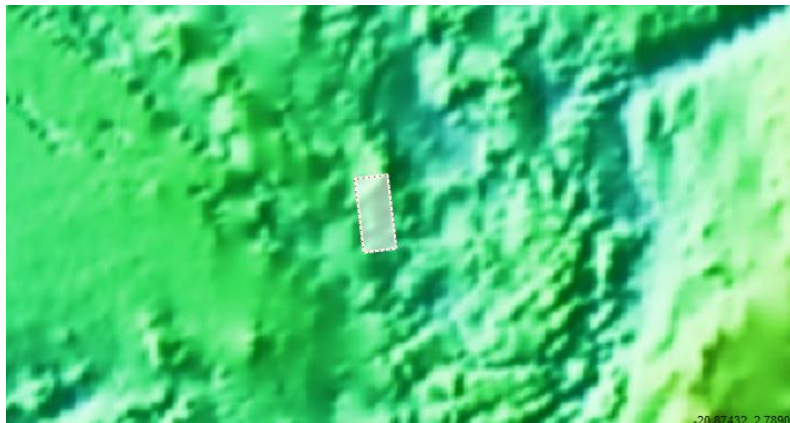
Stereo Pair:

ESP_054753_1825

ESP_055452_1825

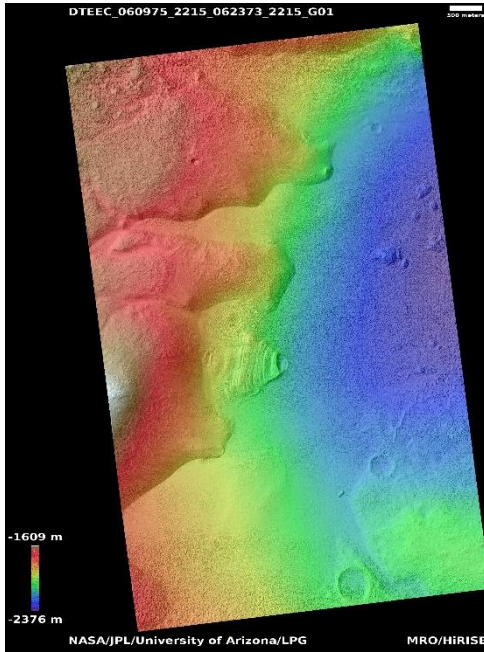
For more details about this DTM, visit:
[https://www.uahirise.org/dtm/dtm.php?](https://www.uahirise.org/dtm/dtm.php?ID=ESP_054753_1825)

[ID=ESP_054753_1825](https://www.uahirise.org/dtm/dtm.php?ID=ESP_054753_1825)



Layered structure and depression on rim of Moreux Crater

DTEEC_060975_2215_062373_2215_G01



41.4°N 46.2°E

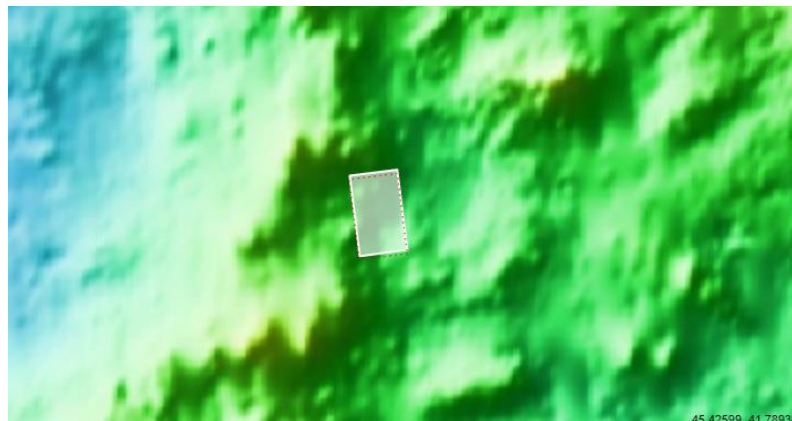
DTM Producer: LPG | Axel Noblet

Stereo Pair:

ESP_060975_2215

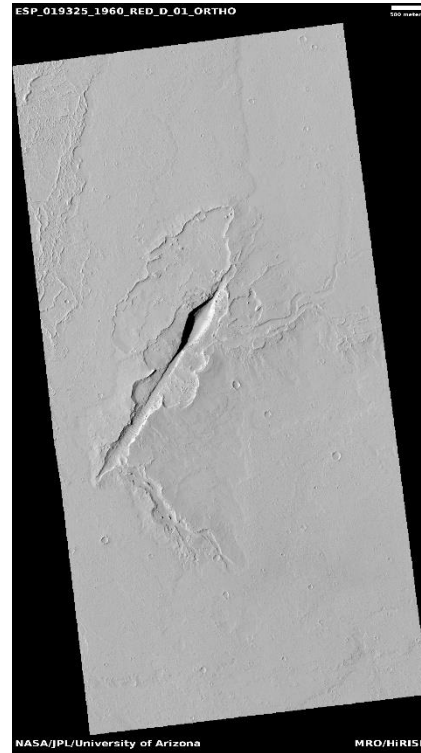
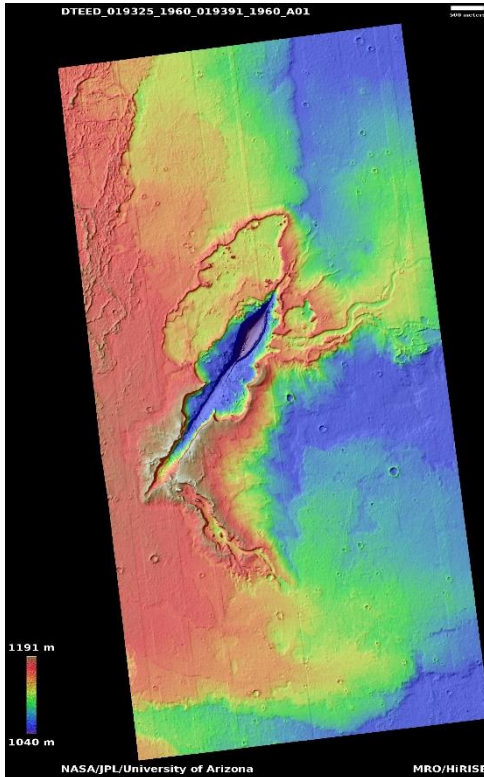
ESP_062373_2215

For more details about this DTM, visit:
[https://www.uahirise.org/dtm/dtm.php?
ID=ESP_060975_2215](https://www.uahirise.org/dtm/dtm.php?ID=ESP_060975_2215)



Lava vent with channels

DTEED_019325_1960_019391_1960_A01



15.7°N 235.5°E

DTM Producer: UA | Maximus X Cabrera

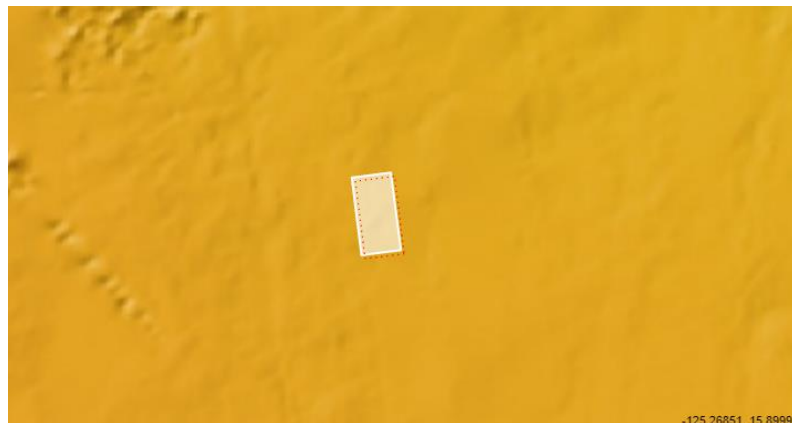
Stereo Pair:

ESP_019325_1960

ESP_019391_1960

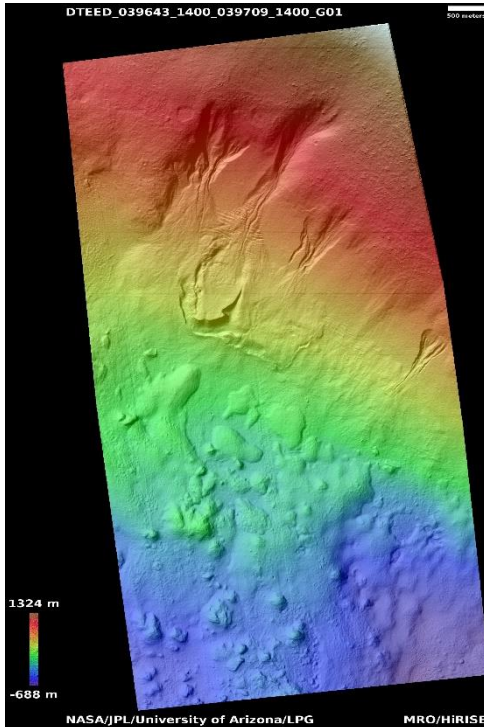
For more details about this DTM, visit:
[https://www.uahirise.org/dtm/dtm.php?](https://www.uahirise.org/dtm/dtm.php?ID=ESP_019325_1960)

[ID=ESP_019325_1960](https://www.uahirise.org/dtm/dtm.php?ID=ESP_019325_1960)



Gullies and viscous flow feature in Nereidum Montes

DTEED_039643_1400_039709_1400_G01



39.5°S 311.8°E

DTM Producer: LPG | Axel Noblet

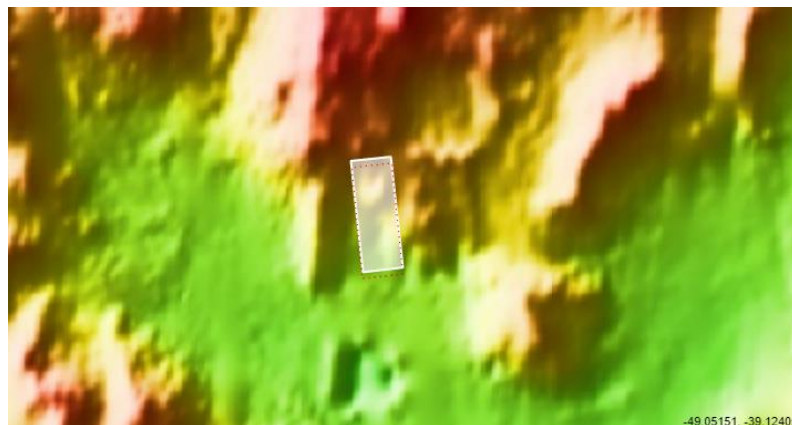
Stereo Pair:

ESP_039643_1400

ESP_039709_1400

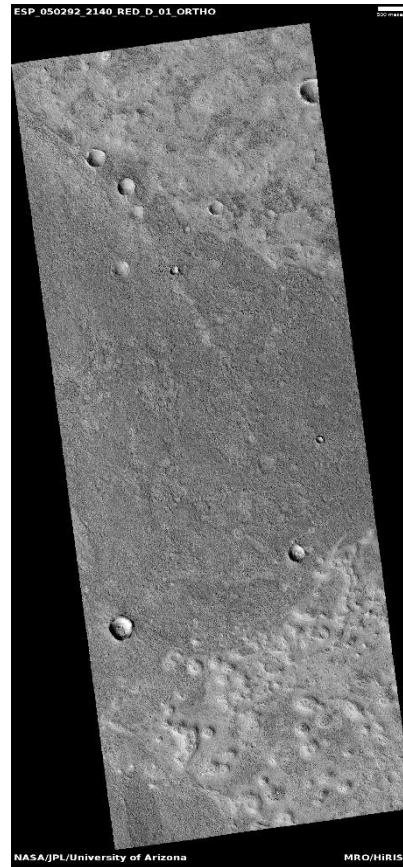
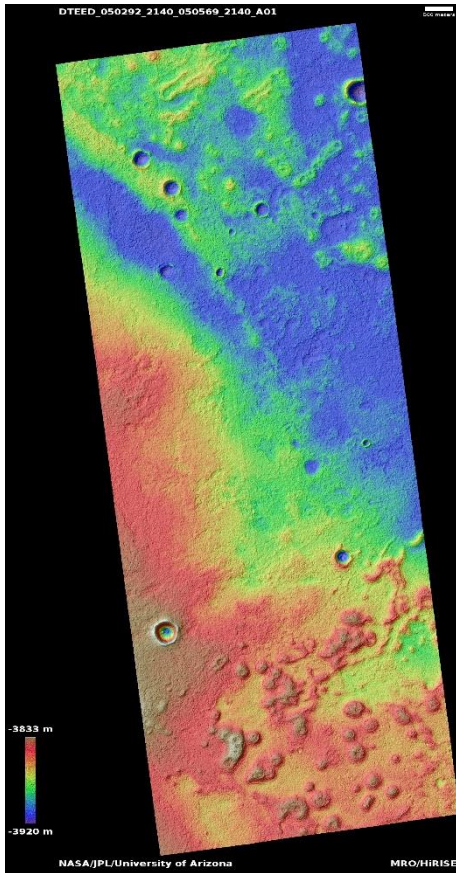
For more details about this DTM, visit:
[https://www.uahirise.org/dtm/dtm.php?](https://www.uahirise.org/dtm/dtm.php?ID=ESP_039643_1400)

[ID=ESP_039643_1400](https://www.uahirise.org/dtm/dtm.php?ID=ESP_039643_1400)



Landforms in Utopia Planitia

DTEED_050292_2140_050569_2140_A01



33.5°N 90.3°E

DTM Producer: UA | Kris Akers

Stereo Pair:

ESP_050292_2140

ESP_050569_2140

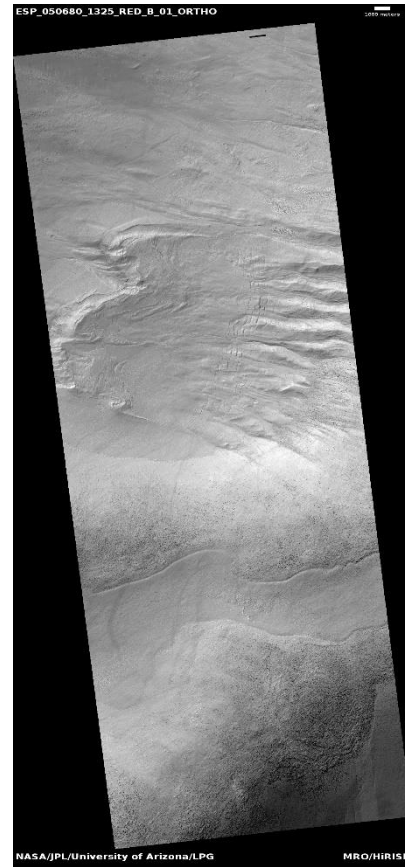
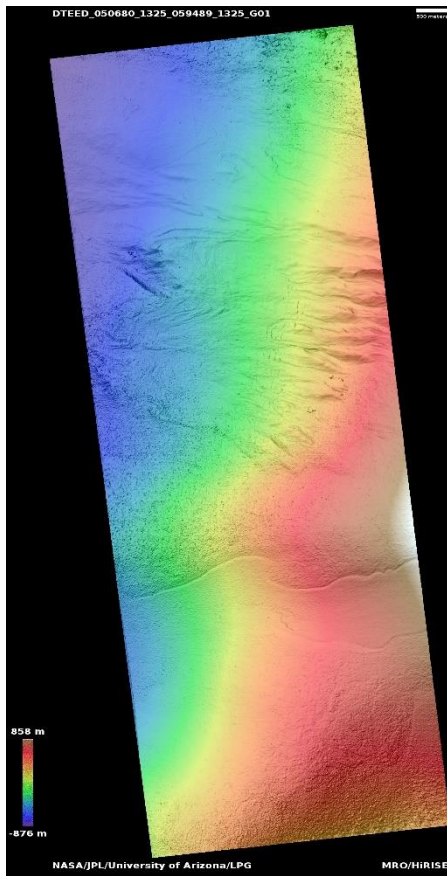
For more details about this DTM, visit:
[https://www.uahirise.org/dtm/dtm.php?](https://www.uahirise.org/dtm/dtm.php?ID=ESP_050292_2140)

[ID=ESP_050292_2140](https://www.uahirise.org/dtm/dtm.php?ID=ESP_050292_2140)



Mass of viscous flow features at base of gullied slope

DTEED_050680_1325_059489_1325_G01



47.0°S 307.2°E

DTM Producer: LPG | Axel Noblet

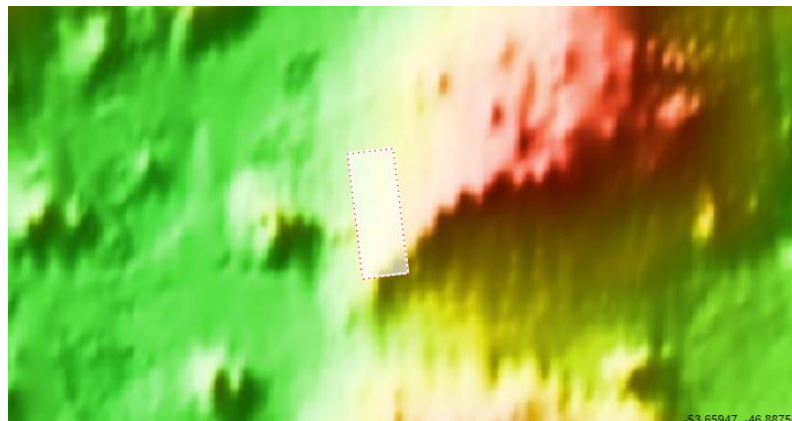
Stereo Pair:

ESP_050680_1325

ESP_059489_1325

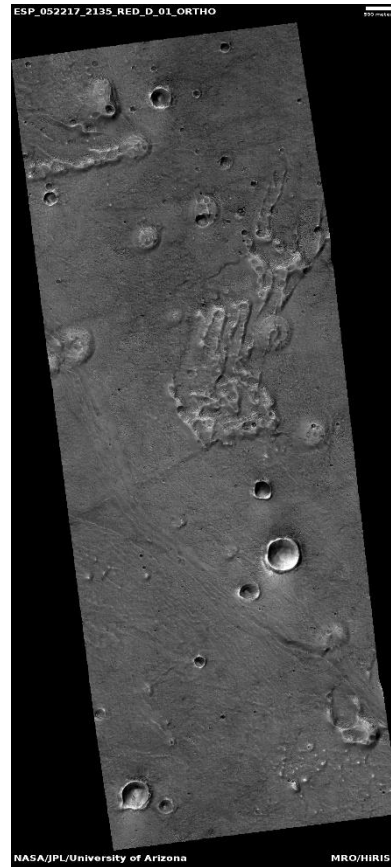
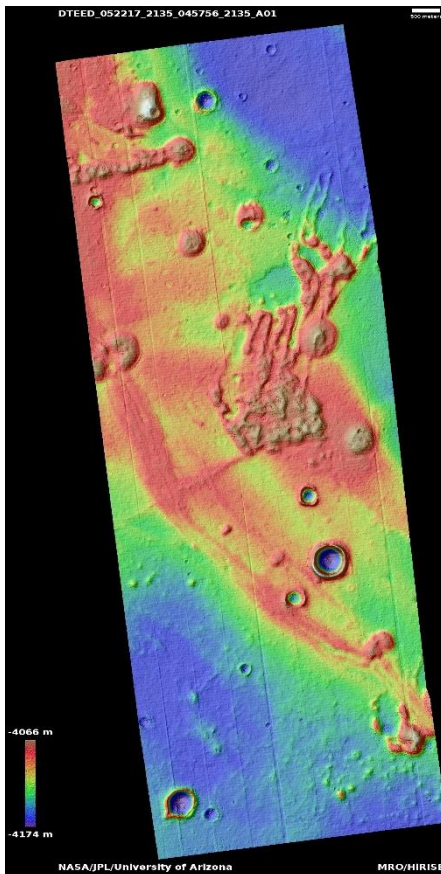
For more details about this DTM, visit:
[https://www.uahirise.org/dtm/dtm.php?](https://www.uahirise.org/dtm/dtm.php?ID=ESP_050680_1325)

[ID=ESP_050680_1325](https://www.uahirise.org/dtm/dtm.php?ID=ESP_050680_1325)



Landforms in Utopia Planitia

DTEED_052217_2135_045756_2135_A01



33.2°N 94.1°E

DTM Producer: UA | Maximus X Cabrera

Stereo Pair:

ESP_052217_2135

ESP_045756_2135

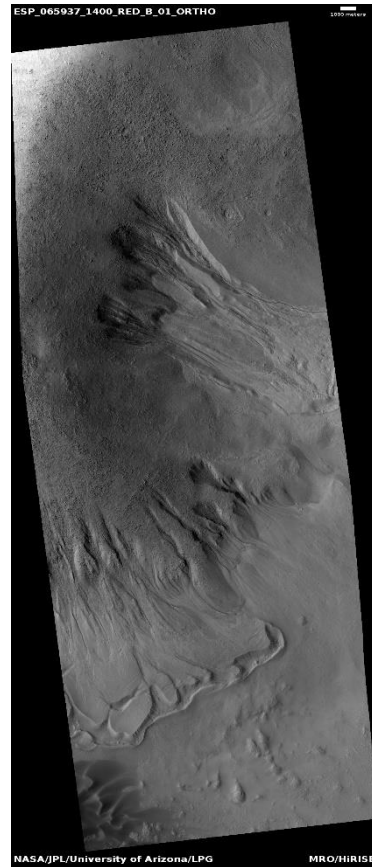
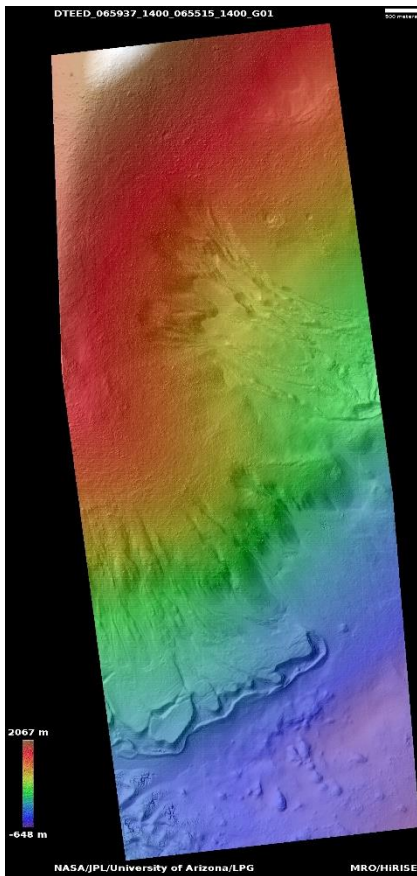
For more details about this DTM, visit:
[https://www.uahirise.org/dtm/dtm.php?](https://www.uahirise.org/dtm/dtm.php?ID=ESP_052217_2135)

[ID=ESP_052217_2135](https://www.uahirise.org/dtm/dtm.php?ID=ESP_052217_2135)



Gullies in Nereidum Montes

DTEED_065937_1400_065515_1400_G01



39.5°S 312.3°E

DTM Producer: LPG | Axel Noblet

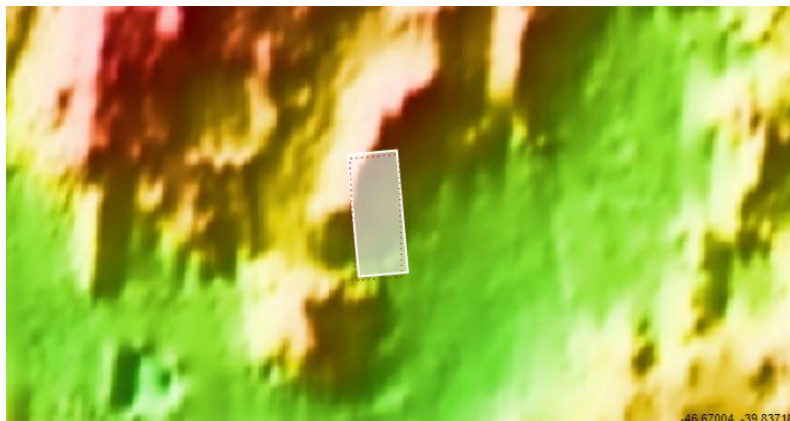
Stereo Pair:

ESP_065937_1400

ESP_065515_1400

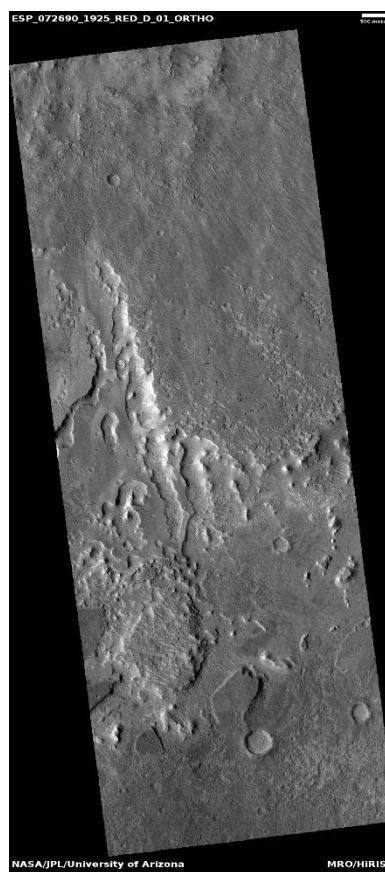
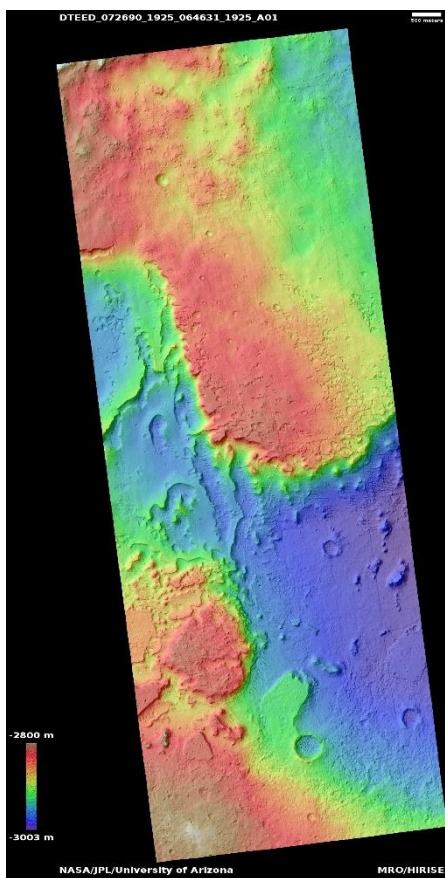
For more details about this DTM, visit:
[https://www.uahirise.org/dtm/dtm.php?](https://www.uahirise.org/dtm/dtm.php?ID=ESP_065937_1400)

[ID=ESP_065937_1400](https://www.uahirise.org/dtm/dtm.php?ID=ESP_065937_1400)



Distal extent of inverted delta material

DTEED_072690_1925_064631_1925_A01



12.4°N 315.8°E

DTM Producer: UA | Kris Akers

Stereo Pair:

ESP_072690_1925

ESP_064631_1925

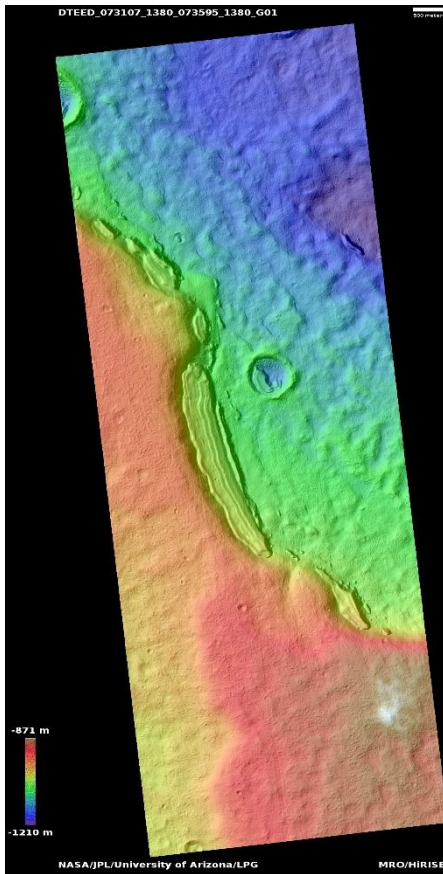
For more details about this DTM, visit:
[https://www.uahirise.org/dtm/dtm.php?](https://www.uahirise.org/dtm/dtm.php?ID=ESP_072690_1925)

[ID=ESP_072690_1925](https://www.uahirise.org/dtm/dtm.php?ID=ESP_072690_1925)



Dipping layers south of Reull Vallis

DTEED_073107_1380_073595_1380_G01



41.4°S 100.0°E

DTM Producer: LPG | Axel Noblet

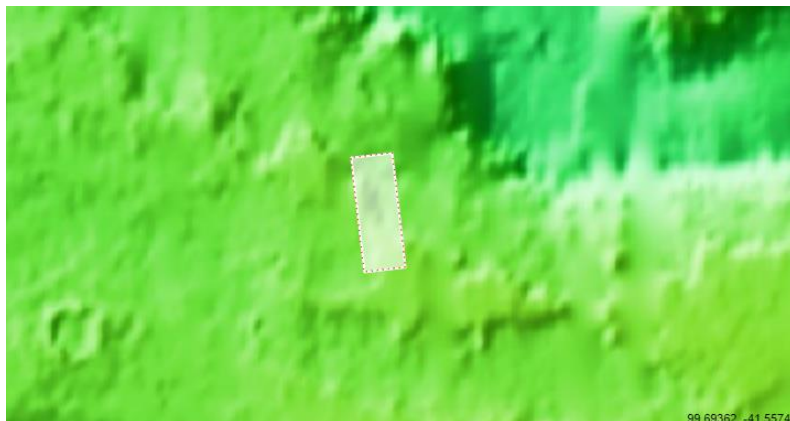
Stereo Pair:

ESP_073107_1380

ESP_073595_1380

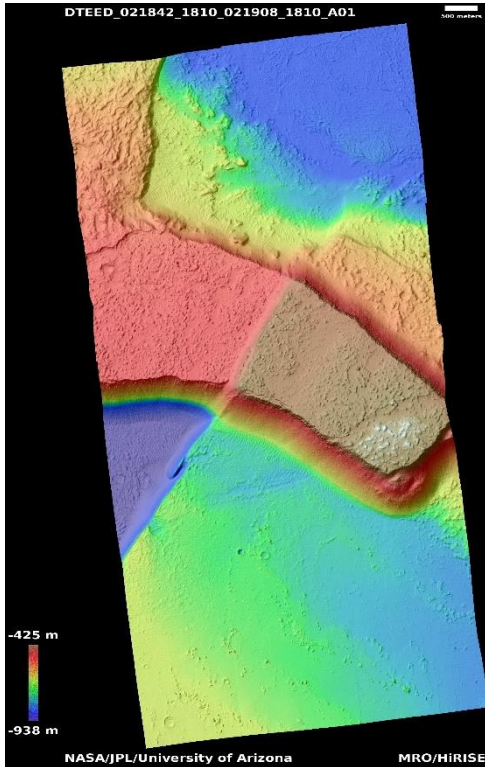
For more details about this DTM, visit:
[https://www.uahirise.org/dtm/dtm.php?](https://www.uahirise.org/dtm/dtm.php?ID=ESP_073107_1380)

[ID=ESP_073107_1380](https://www.uahirise.org/dtm/dtm.php?ID=ESP_073107_1380)



Fractures and uplifted portion of floor of Echus Chasma

DTEED_021842_1810_021908_1810_A01



0.9°N 279.9°E

DTM Producer: UA | Maximus X Cabrera

Stereo Pair:

ESP_021842_1810

ESP_021908_1810

For more details about this DTM, visit:
[https://www.uahirise.org/dtm/dtm.php?](https://www.uahirise.org/dtm/dtm.php?ID=ESP_021842_1810)

[ID=ESP_021842_1810](https://www.uahirise.org/dtm/dtm.php?ID=ESP_021842_1810)

